



Accelerating success.

For Lease

#### Contact us:

**Christopher Potts, CCIM**

+1 614 437 4654

christopher.potts@colliers.com

**Taylor Fanté, CCIM**

+1 614 410 5292

taylor.fante@colliers.com

Colliers  
Greater Columbus Region  
Two Miranova Place  
Suite 900  
Columbus, OH 43215



## Life's Professional Center

**575, 595, 615 Copeland Mill Road  
Westerville, OH 43081**

Life's Professional Center is a three-building medical office campus that totals 58,039 SF located directly across the street from Mount Carmel St. Ann's Hospital in Westerville. Less than a five minute drive to I-270, I-71, and Cleveland Avenue, Life's Professional Center offers a convenient and competitive solution for a range of medical and office space users.

#### ***Recent Improvements – Completed & Underway:***

Full Lobby & Restroom Refresh	<i>Completed</i>
New Landscaping	<i>Completed</i>
Upgraded Building Security	<i>Completed</i>
Parking Lot Improvements	<i>Completed</i>
New Exterior LED Lighting	<i>Completed</i>
New Roofing	<i>Completed</i>

View online at [colliers.com/columbus](https://colliers.com/columbus)

# Property Overview

Base Rent	\$10.95 - \$12.95 PSF NNN
Operating Expenses	\$8.16 PSF
Amenities	Tenant amenity conference room available at 615 Copeland Mill Rd with complimentary wi-fi and coffee.
Move-in Ready Suites	Various pre-finished suites available with brand new carpet, paint, LED light fixtures, and break areas with sinks.
Parking	High parking ratio of 4.2 spaces per 1,000 SF

\*Landlord will provide a generous \$35/SF allowance for a custom build-out. See flyer floorplans for qualifying suites

## Availability

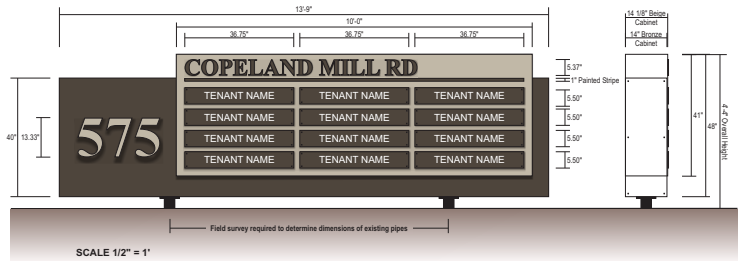
	SUITE	RSF	Suite Notes
575	2D	2,264	Move-in ready suite with private offices
595	1B	3,146	Medical suite with exam rooms and plumbing throughout <i>Medical suite with exam rooms.</i>
595	2C**	2,559	Medical suite with plumbing ready for build-out
595	2E**	2,068	Move-in ready suite with 7 private offices and open break area
595	2A**	1,940	Medical suite with plumbing ready for build-out
**Can combine for up to 6,567 RSF			
615	1H	1,782	Former Law Firm
615	2H-B	1,126	Move-in ready office with open break area



## Key Highlights

- New highly-motivated ownership
- Directly across the street from Mount Carmel St. Ann's Hospital
- Less than a five minute drive to I-270 and I-71
- Monument signage available

## Monument Signage Available





# Property Photos

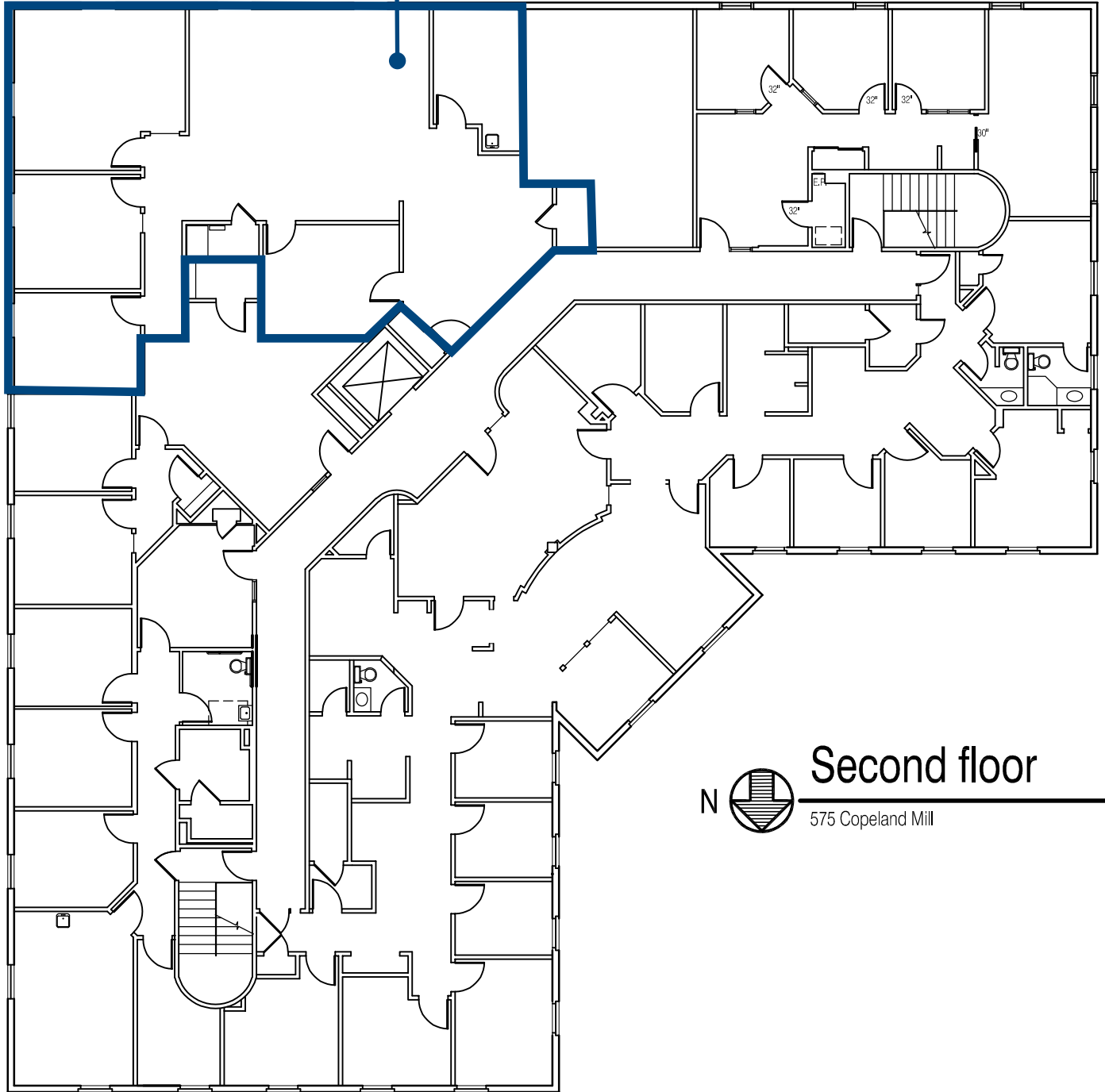




# Building 575

## Second Floor

Suite 2D  
2,264 SF  
\$35/SF TI Allowance\*



### Second floor

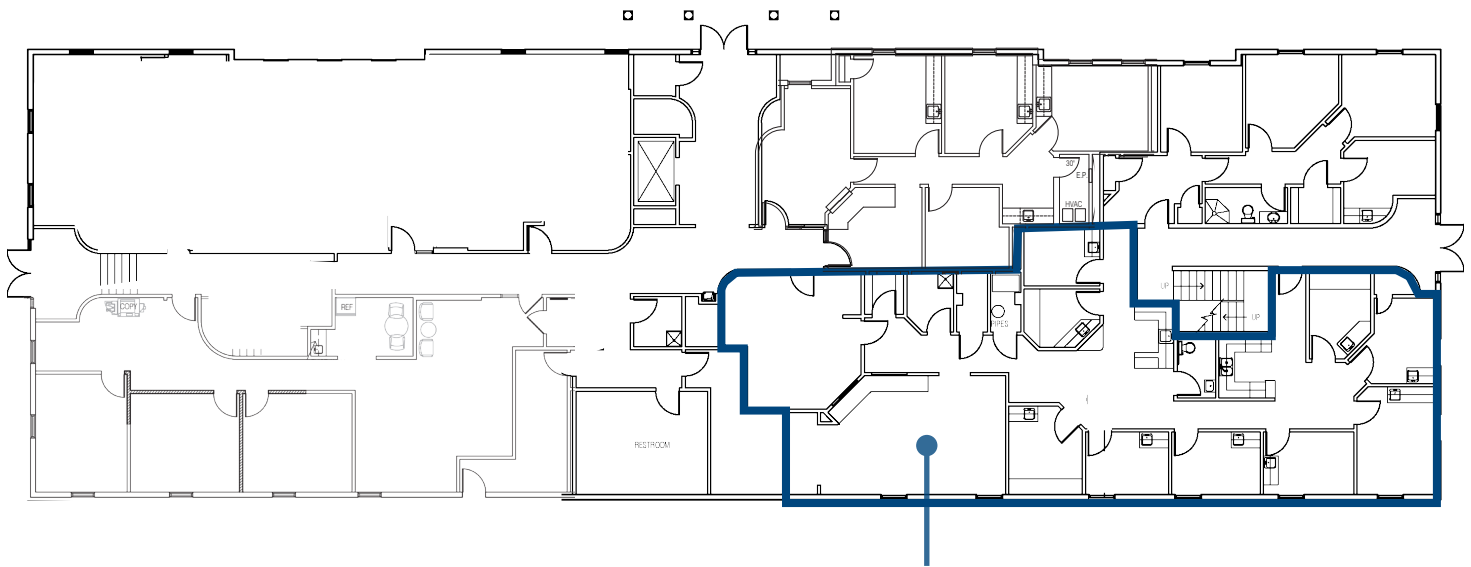
575 Copeland Mill

\*The TI amount is only available on market deals with 5 years of lease term.



# Building 595

## First Floor



Suite 1B  
3,146 SF  
\$35/SF TI Allowance\*

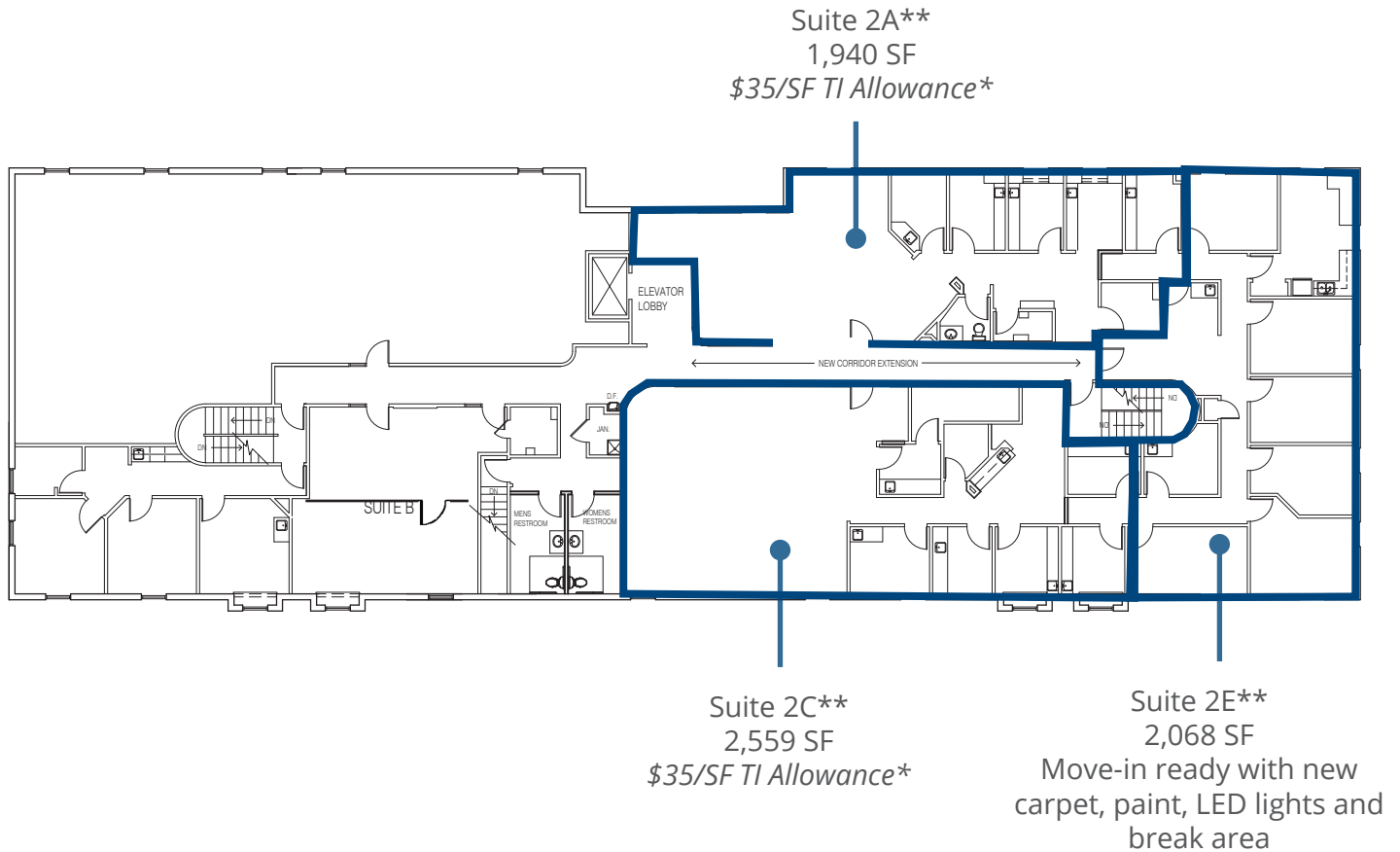
\*The TI amount is only available on market deals with 5 years of lease term.



# Building 595

## Second Floor

### Second Floor - Demised

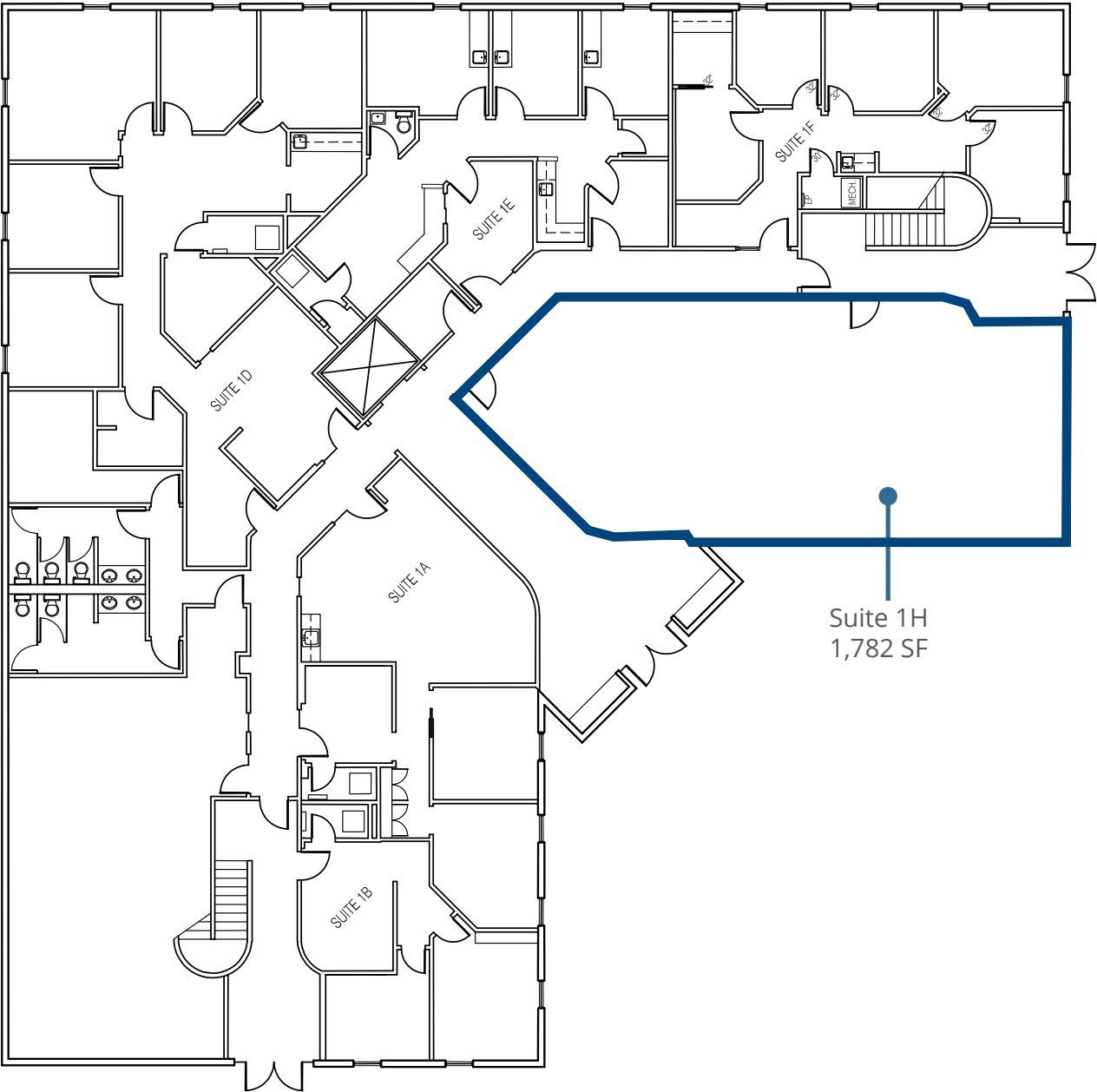


\*The TI amount is only available on market deals with 5 years of lease term.

\*\*Can combine for up to 6,567 RSF

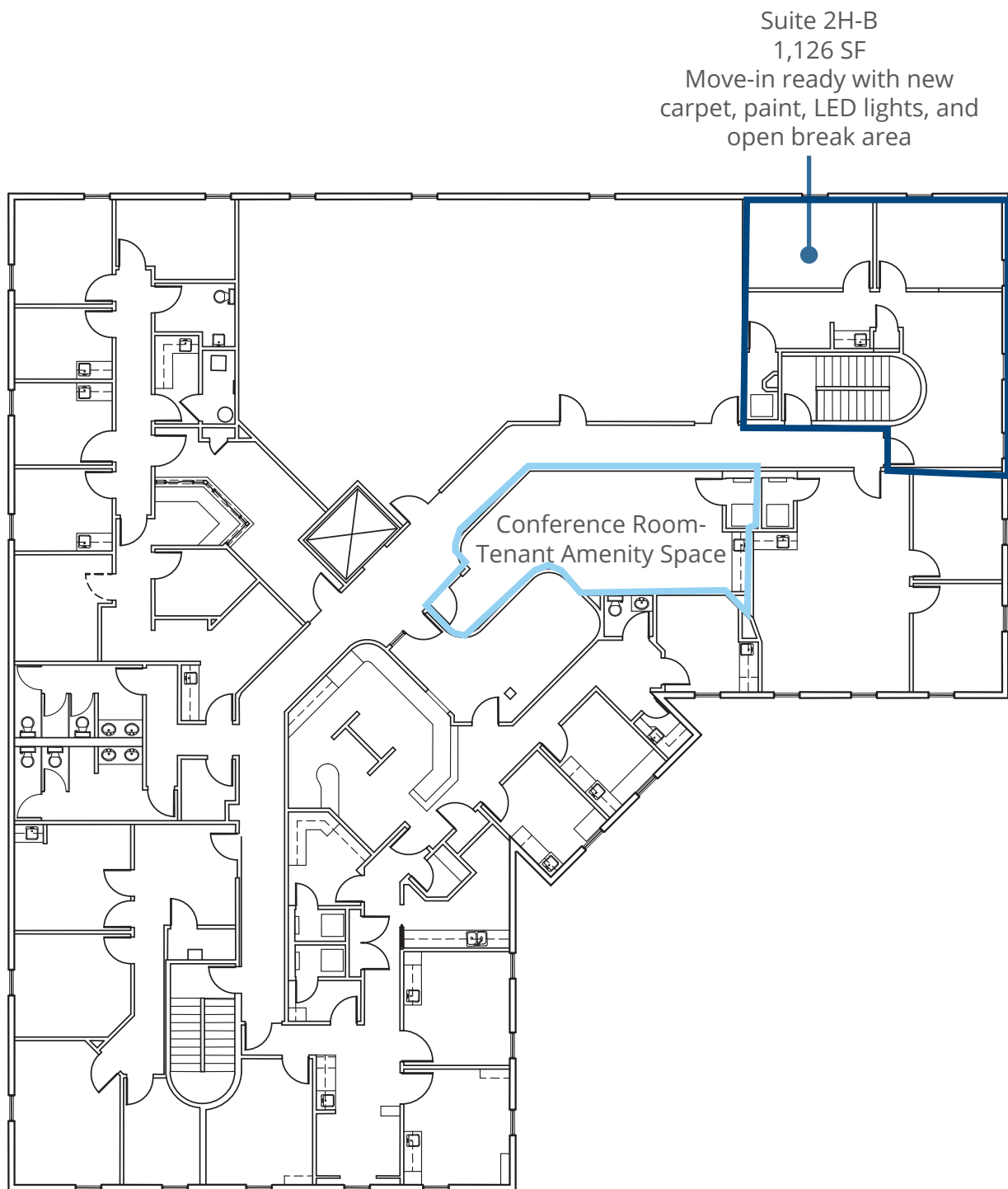
# Building 615

First Floor



# Building 615

## Second Floor





## Location

Westerville, OH

## Demographics

Current Population	Est 2023 Population	Median Age	Median Household Income	Total Housing Units
38,675	40,463	42.2	\$90,979	15,448

## Nearby Dining

Pasquale's Pizza, Jimmy John's, Subway, Tim Horton's, Raisin Rack Natural Food Market, The Pancake House, Skyline Chili, Burger King, Chipotle Mexican Grill, Pizza Hut, McDonald's, Arby's, Rapid Fired Pizza, Bob Evans, Fazoli's, Taco Bell, City Barbeque, Wendy's, Steak Escape, Little Caesar's, Smashburger, Panera Bread, Starbucks, KFC, Papa John's, O'Charley's

## Nearby Amenities

Mt. Carmel St. Ann's Hospital, Sharon Woods Metro Park, CVS, Dollar General, Great Clips, Westerville Golf Center, Ramada by Wyndham, Pet Valu, Fitness 19, Kroger, Key Bank, Huntington Bank, U.S. Bank, Kohl's, OfficeMax, Chase Bank, Red Roof Inn, PNC Bank, Big Lots, Walmart, Fifth Third Bank, Home Depot, Embassy Suites

