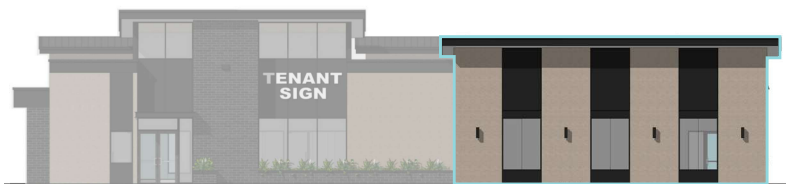
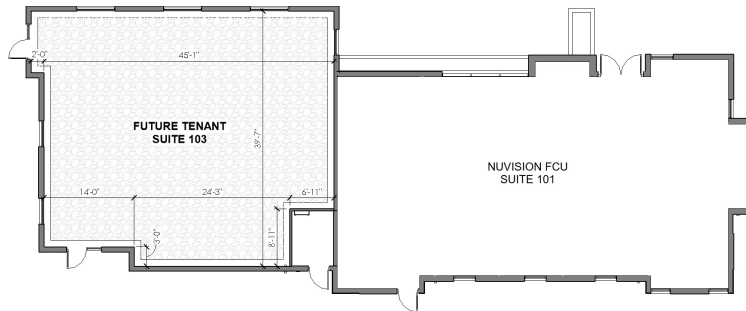
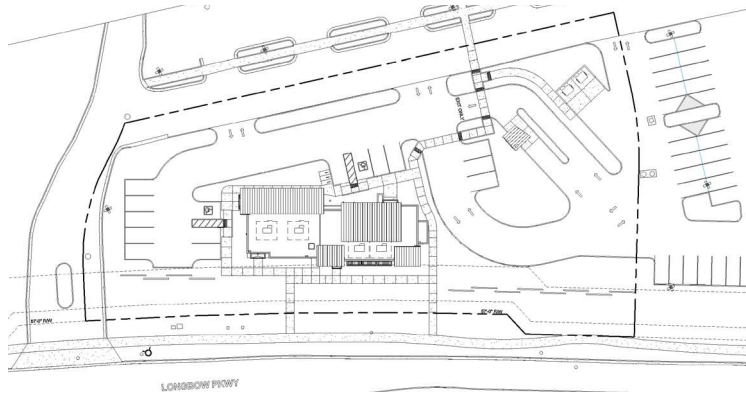


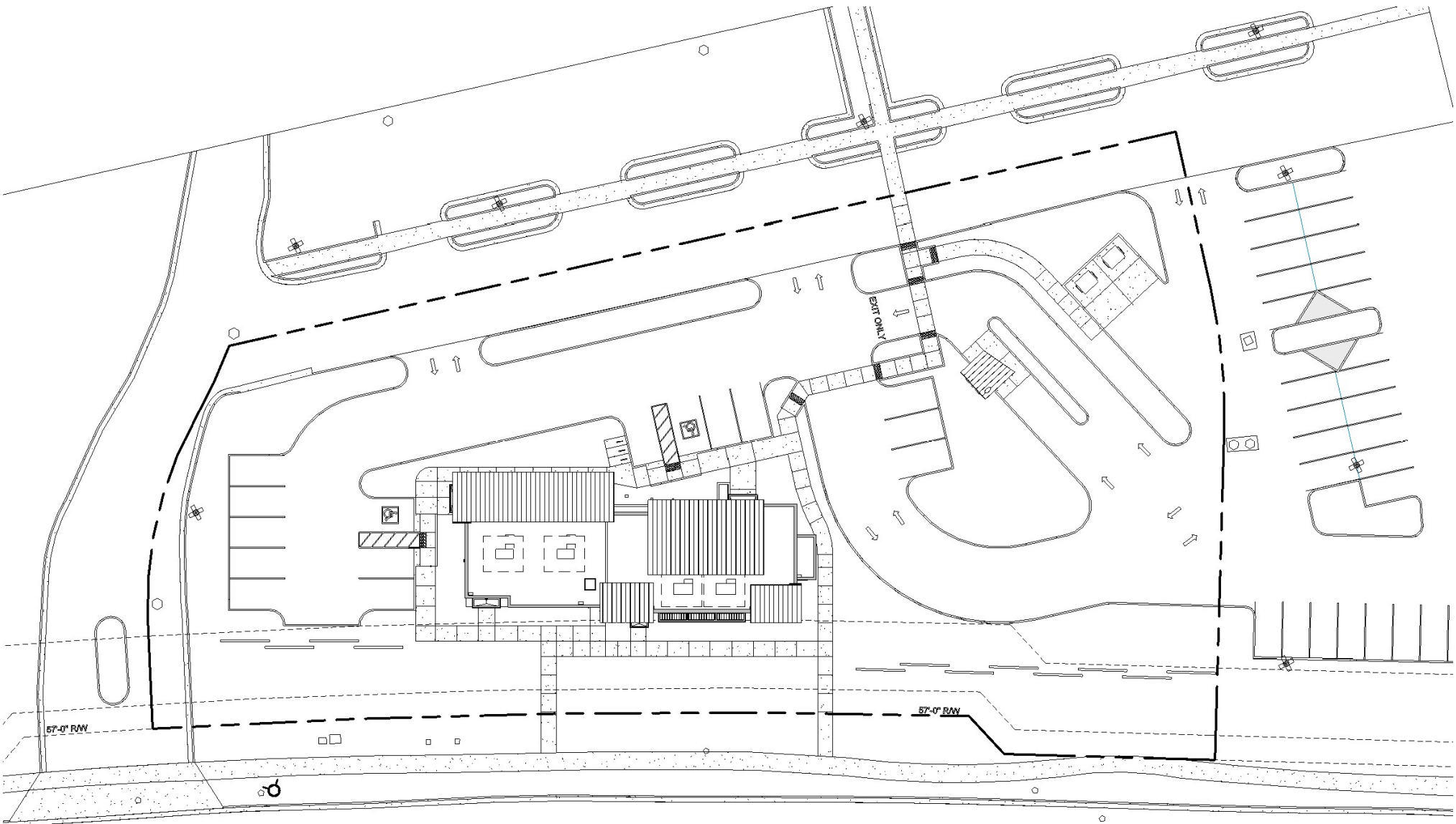
5822 E. LONGBOW PARKWAY, SUITE 103 MESA, AZ 85215

A 1,775 square foot tenant suite is now available for lease at 5822 E. Longbow Parkway, Suite 103 in Mesa, Arizona. With easy access to major highways, this space offers great visibility for businesses looking to attract both vehicular and pedestrian traffic.

The property includes 8 dedicated parking spaces for the exclusive use of the tenant. The tenant space will be a grey shell without the interior slab poured or restrooms placed for flexibility with any future layout, and rooftop curbs will be installed for a future tenant to add mechanical units to.

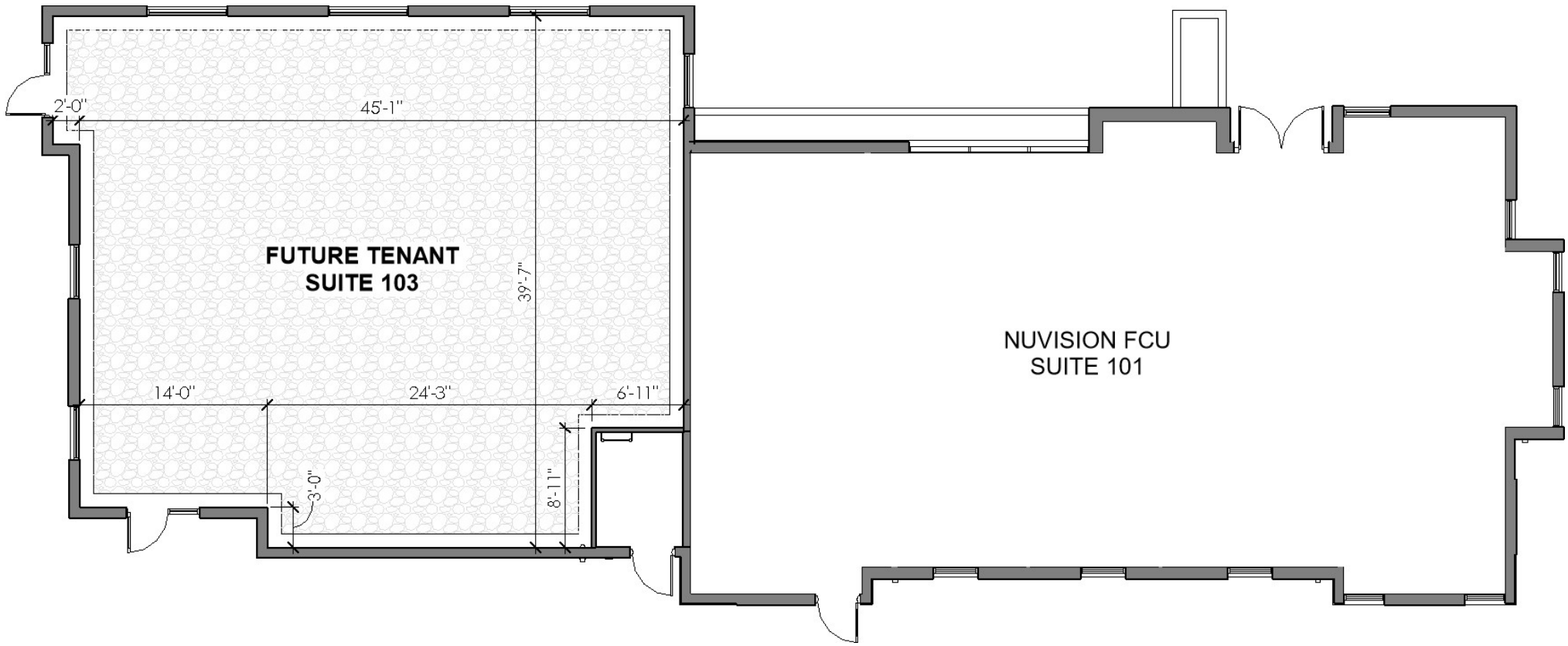
The building's strategic location ensures high traffic, while still providing the quietness and professionalism of a well-maintained commercial environment.





LONGBOW PKWY

SITE PLAN



FLOOR PLAN









**TENANT
SIGN**



NORTH ELEVATION



SOUTH ELEVATION