

# 1441

## WRIGHT ST

LOS ANGELES, CA 90015

# DTLA PARKING LOT

## PRICE REDUCED!



# Land For Lease

± 10,680 SQ. FT. LOT FOR PARKING

### Property HIGHLIGHTS



DTLA Parking Lot, Fenced and Paved



Walking Distance from Convention Center, Crypto.com Arena & LA Live



Perfect for Car / Van / Small Truck Parking



Building Also Available for Lease



**Lease Rate: \$0.70 PSF/Mo or \$7,476 PSF Gross**

**PETER D. BACCI**  
SIOR | Executive VP, Principal  
pbacci@lee-associates.com  
323.767.2022  
LIC NO 00946253

**ADAM VILAN**  
Senior Associate  
avilan@lee-associates.com  
323.767.2047  
LIC NO 01903742

Lee & Associates | Los Angeles Central  
5675 Telegraph Rd, Ste 300, Commerce, CA 90040

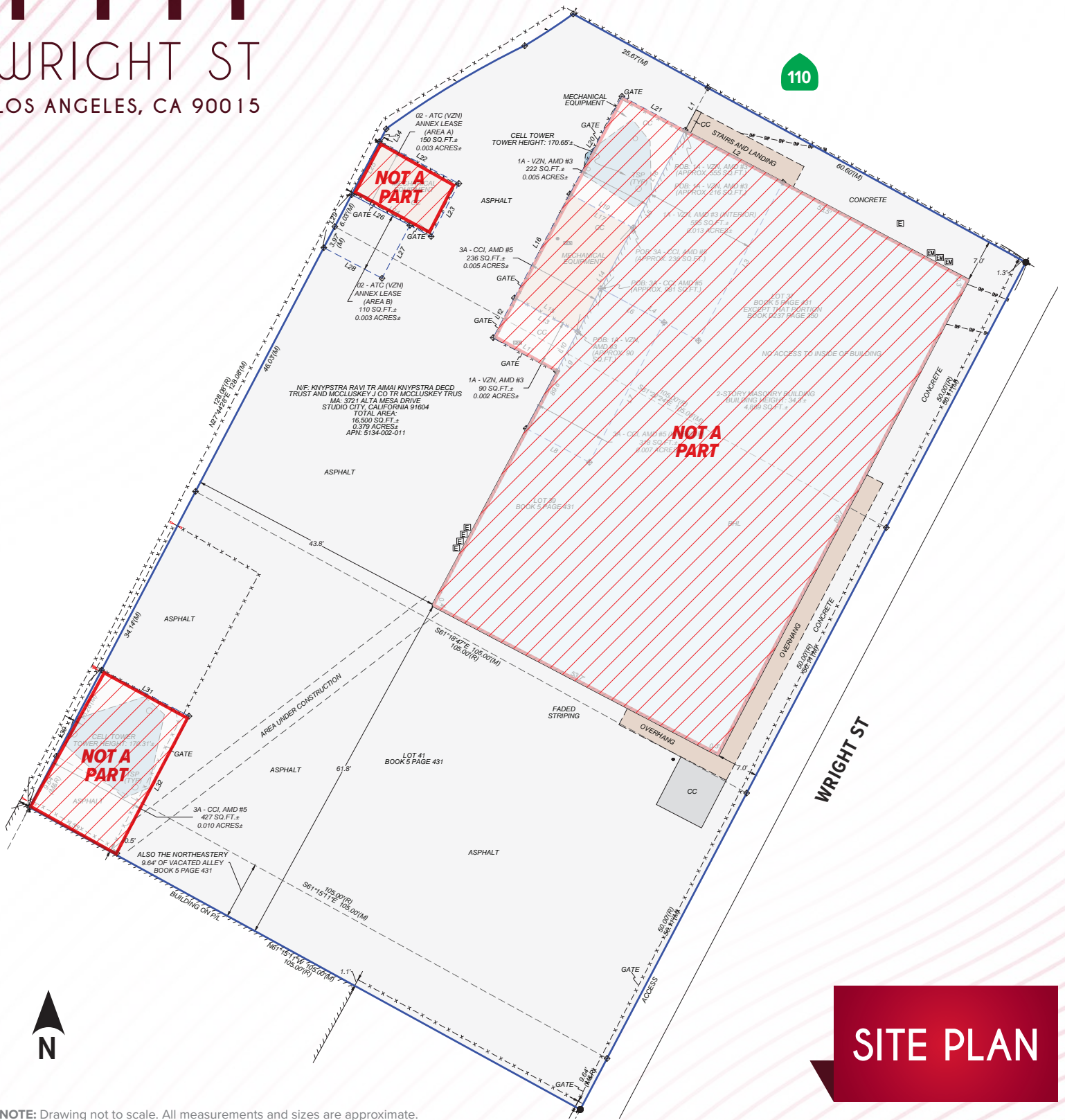
**LEE-ASSOCIATES.COM**  
CORP ID 01125429

The information contained herein is obtained from sources believed to be reliable. However, we have not verified it and make no guarantees, warranties or representations as to the completeness or accuracy thereof. The presentation of this property is used for example and is submitted subject to errors, omissions, change of price or conditions, and is subject to prior sale, lease or withdrawal without notice.

# 1441

## WRIGHT ST

### LOS ANGELES, CA 90015



NOTE: Drawing not to scale. All measurements and sizes are approximate.

**PETER D. BACCI**  
SIOR | Executive VP, Principal  
pbacci@lee-associates.com  
323.767.2022  
LIC NO 00946253

**ADAM VILAN**  
Senior Associate  
avilan@lee-associates.com  
323.767.2047  
LIC NO 01903742

Lee & Associates | Los Angeles Central  
5675 Telegraph Rd, Ste 300, Commerce, CA 90040

**LEE-ASSOCIATES.COM**  
CORP ID 01125429

The information contained herein is obtained from sources believed to be reliable. However, we have not verified it and make no guarantees, warranties or representations as to the completeness or accuracy thereof. The presentation of this property is used for example and is submitted subject to errors, omissions, change of price or conditions, and is subject to prior sale, lease or withdrawal without notice.