

**AVISON  
YOUNG**

**Sublease**

**Hugh R. Black Pavilion**  
1650 Skylyn Dr, Suite 380  
Spartanburg, SC 29301

**Suite 380 (2,132 sf)**



## Medical office building sublease opportunity

Hugh R. Black Pavilion boasts 109,500 sf of Class A medical space unique to the Spartanburg market. This building is located at the heart of Spartanburg Regional's Hospital System's Mary Black campus. The campus features immaculate landscaping and an abundance of parking. The lobby has marble floors and two large elevators that can accommodate hospital beds. The 1st floor features a fitness gym and smoothie bar for the building's employees.

### Get more information

**Chris Prince**, Vice President  
+1 864.430.4957  
[chris.prince@avisonyoung.com](mailto:chris.prince@avisonyoung.com)

**Ned Reynolds**, Vice President  
+1 336.260.3148  
[ned.reynolds@avisonyoung.com](mailto:ned.reynolds@avisonyoung.com)

**Will Hannah**, Associate  
+1 864.508.4525  
[will.hannah@avisonyoung.com](mailto:will.hannah@avisonyoung.com)

[avisonyoung.com](http://avisonyoung.com)



# Property overview

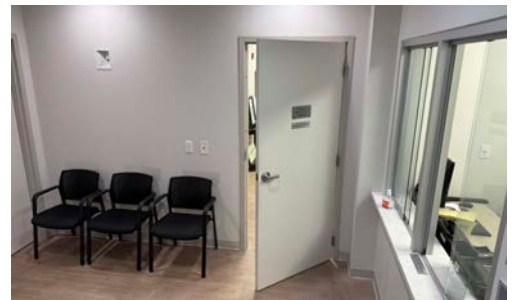
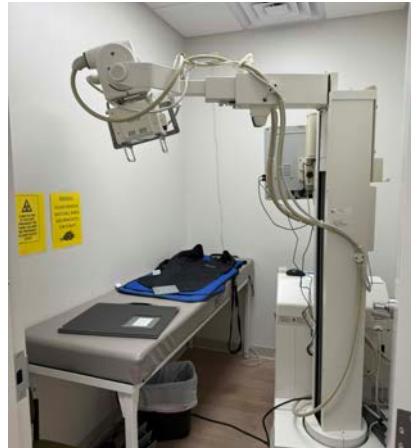
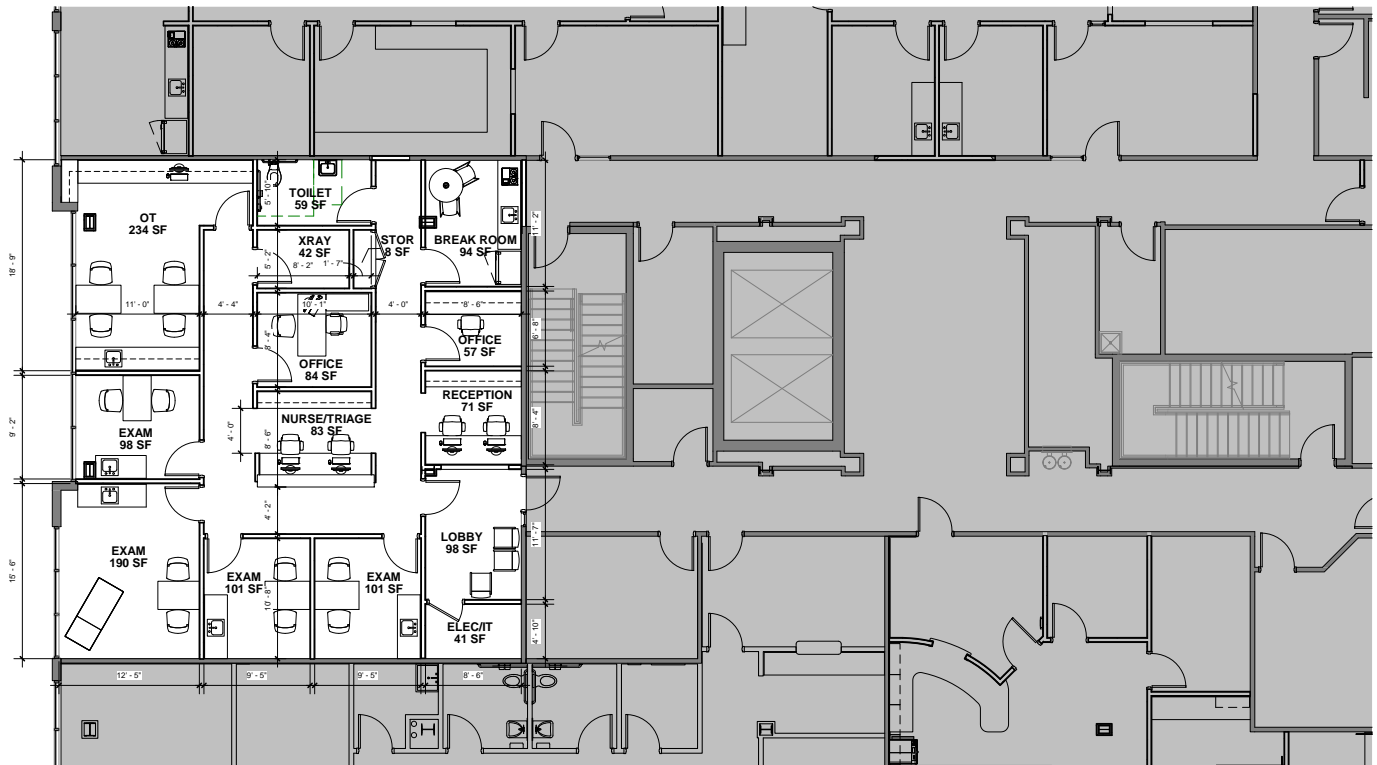
Hugh R. Black Pavilion - Sublease

- Suite 380 (2,132 sf)
- NNN lease
- Class A medical office
- Ample parking
- On-site gym with pool and snack bar
- Close to new Drayton Mills mixed-use development
- Across the street from Spartanburg Day School
- Adjacent to Houston Elementary School



# Floorplan & interior

Hugh R. Black Pavilion - Sublease



**For more  
information:**

**Chris Prince**  
Vice President  
+1 864.430.4957

**Ned Reynolds**  
Vice President  
+1 336.260.3148

**Will Hannah**  
Associate  
+1 864.508.4525

**AVISON  
YOUNG**