

Southbow Landing

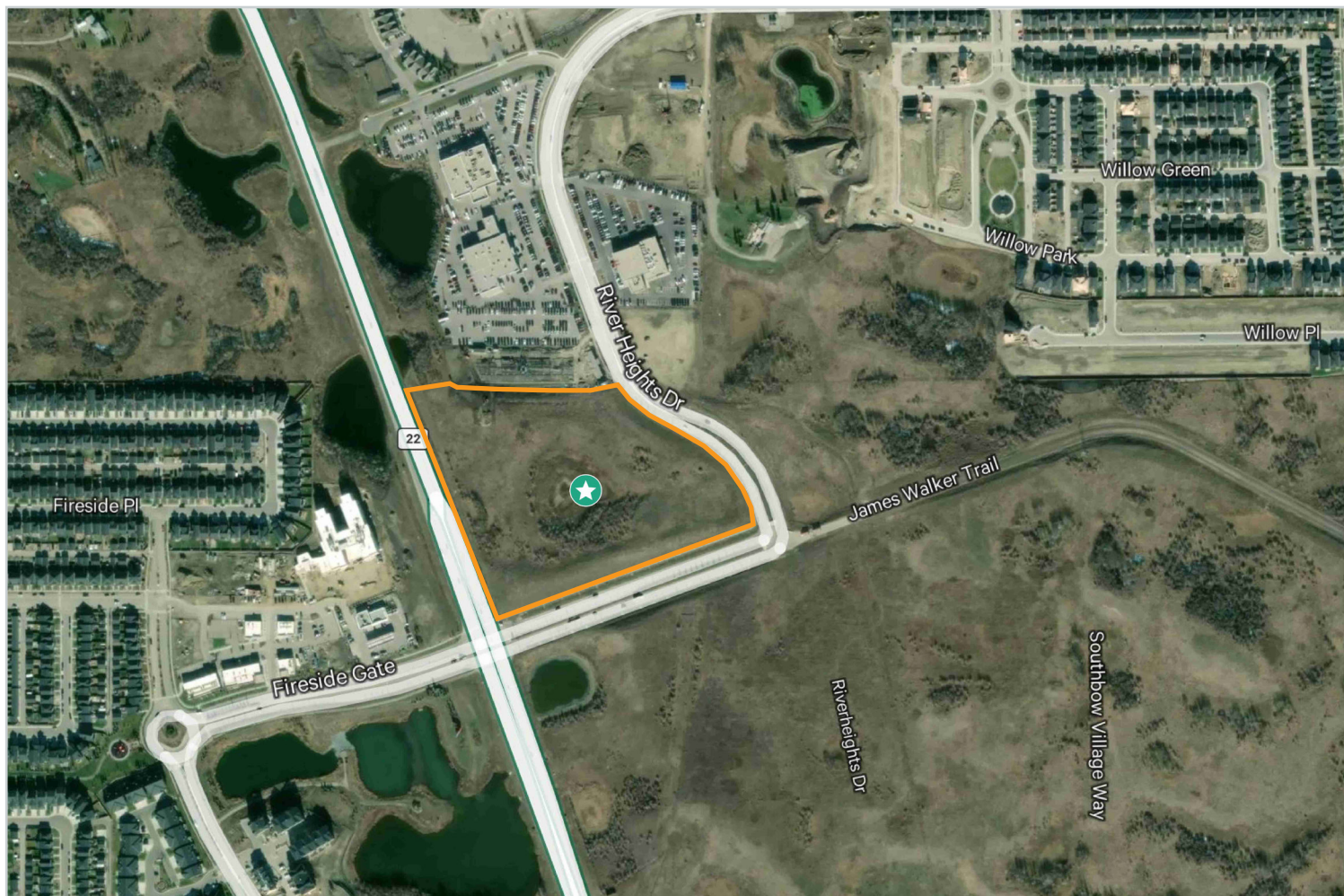
Cochrane, Alberta

13.22 Acres of Industrial Development Land in Cochrane Alberta



2 River Heights Drive

Cochrane, Alberta | T4C 2A4



Zoning	I-G (Industrial-General)
--------	--------------------------

Municipal Address	2, 2A & 2B River Heights Drive, Cochrane AB
-------------------	---

Site Area	13.22 Acres
-----------	-------------

Asking Price	\$1,000,000.00/acre
--------------	---------------------

Availability	Immediately
--------------	-------------

Rare Industrial Land Opportunity

Southbow Landing, Cochrane

Acquire a prime piece of industrial land in a master-planned community, strategically located for maximum exposure and accessibility.

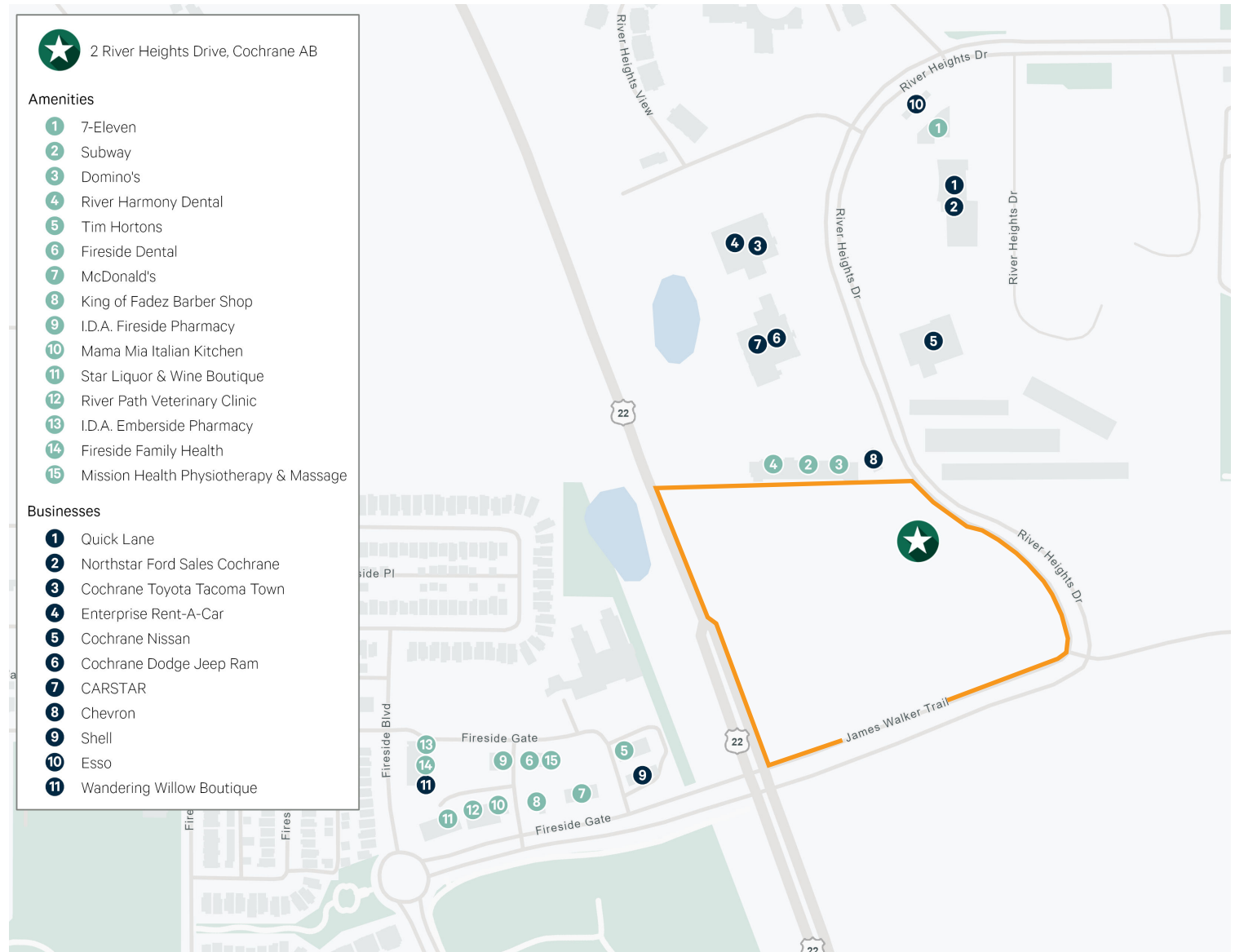
Key Highlights

- + Excellent visibility from Highway 22 (Cowboy Trail)
- + Adjacent site (Phase 1A) is planned mix commercial development, meeting local shopping needs
- + Fully serviced and rough-graded, ready for development
- + Minutes from the Trans Canada Highway, serving Calgary and Canmore

Unbeatable Location

Position your business for success in a growing community, with easy access to major highways and a strong local market. Don't miss this rare opportunity to secure your spot in Southbow Landing.





Contact Us

Iain Ferguson

Vice Chairman

+1 403 750 0803

iain.ferguson@cbre.com

*Lead Broker

Evan Renwick

Vice President

+1 403 750 0807

evan.renwick@cbre.com

*Lead Broker

Luke Hamill

Executive Vice President

+1 403 294 5707

luke.hamill@cbre.com

Cameron Woods

Vice President

+1 403 303 4562

cameron.woods@cbre.com

Blake Ellis

Vice President

+1 403 750 0519

blake.ellis@cbre.com

Kai Ravensbergen

Associate

+1 403 750 0525

kai.ravensbergen@cbre.com

This disclaimer shall apply to CBRE Limited, and to all divisions of the Corporation ("CBRE"). The information set out herein (the "Information") has not been verified by CBRE, and CBRE does not represent, warrant or guarantee the accuracy, correctness and completeness of the Information. CBRE does not accept or assume any responsibility or liability, direct or consequential, for the Information or the recipient's reliance upon the Information. The recipient of the Information should take such steps as the recipient may deem necessary to verify the Information prior to placing any reliance upon the Information. The Information may change and any property described in the Information may be withdrawn from the market at any time without notice or obligation to the recipient from CBRE.

Mapping Sources: Canadian Mapping Services canadamapping@cbre.com; DMTI Spatial, Environics Analytics, Microsoft Bing, Google Earth.