

Specifications

±12,000 SF TOTAL BUILDING SIZE	Renovated FACILITY
6 Office Units OFFICE	±1.10 LOT SIZE
2 Docks LOADING	I-1 ZONING
11' Clear CEILING HEIGHT	Please Call LEASE RATE
23 Parking Spaces PARKING	
3 Phase (1200 Amps) POWER	
Ideal for Manufacturing Use Climate Controlled Facility New HVAC System 10 Ton, 20 Ton, & 3 Ton Units 10 Ton Split System HIGHLIGHTS	

For additional property information or to arrange an inspection, please contact the exclusive brokers:

Jason M. Crimmins, CCIM, SIOR, President, 973.379.6644 x 122, jmcrimmins@blauberg.com
Alessandro (Alex) Conte, CCIM, SIOR, Executive Vice President, 973.379.6644 x 131, aconte@blauberg.com
Peter J. Murano, Jr., Managing Executive Director, 973.379.6644 x 114, pjmurano@blauberg.com
Troy Schaafsma, Director, 973.379.6644 x 116, troys@blauberg.com

FOR LEASE | 19 WEST STREET | EAST HANOVER, NJ



For additional property information or to arrange an inspection, please contact the exclusive brokers:

Jason M. Crimmins, CCIM, SIOR, President, 973.379.6644 x 122, jmcrimmins@blauberg.com
Alessandro (Alex) Conte, CCIM, SIOR, Executive Vice President, 973.379.6644 x 131, aconte@blauberg.com
Peter J. Murano, Jr., Managing Executive Director, 973.379.6644 x 114, pjmurano@blauberg.com
Troy Schaafsma, Director, 973.379.6644 x 116, troys@blauberg.com

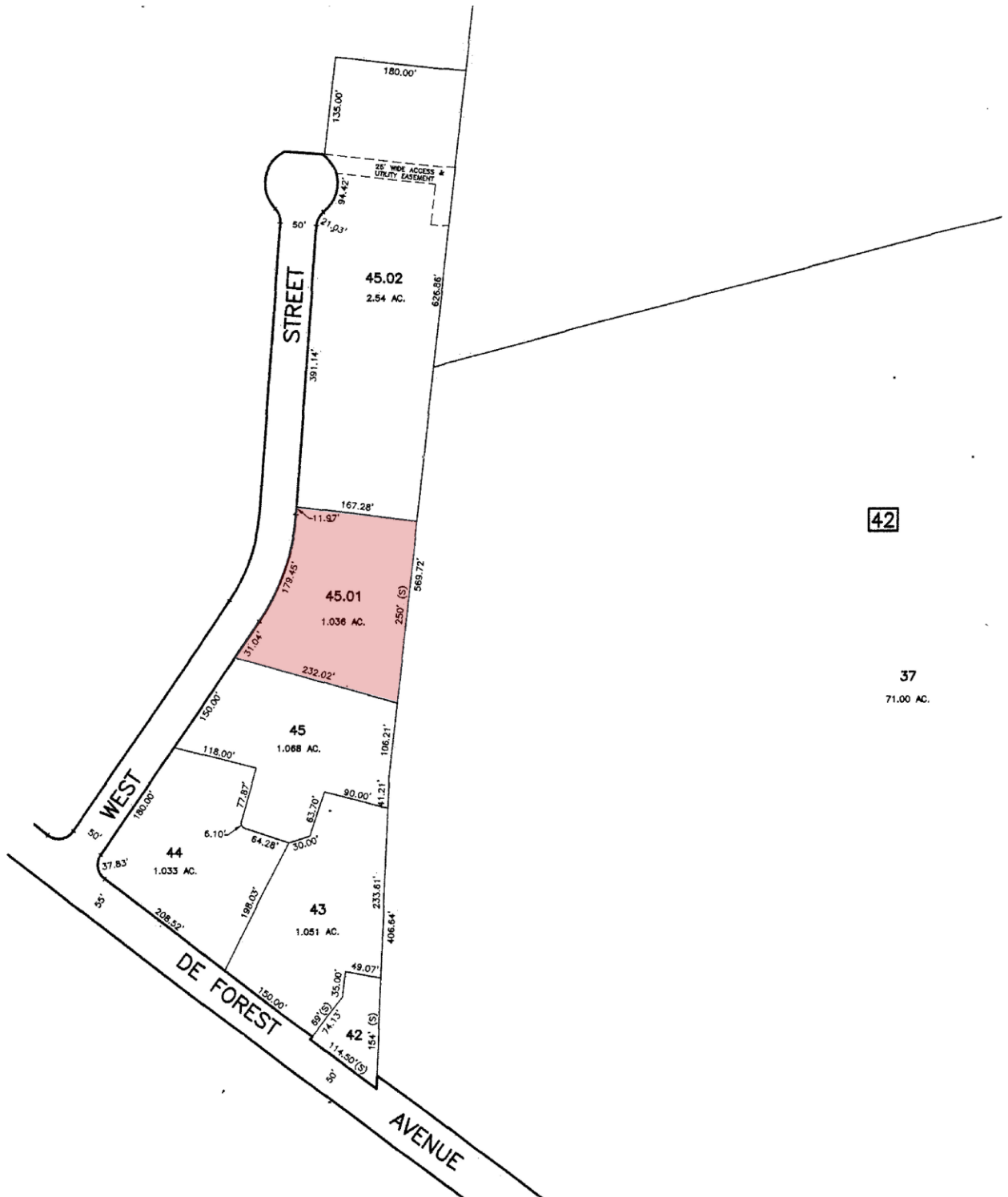
The information contained herein has been obtained from sources considered to be reliable, but no guarantee of its accuracy is made by this company. In addition, no representation is made respecting zoning, condition of title, dimensions, or any matters of a legal or environmental nature. Such matters should be referred to legal counsel for determination. Terms and conditions are subject to change without prior notice. Subject to errors and omissions.



For additional property information or to arrange an inspection, please contact the exclusive brokers:

Jason M. Crimmins, CCIM, SIOR, President, 973.379.6644 x 122, jmcrimmins@blauberg.com
Alessandro (Alex) Conte, CCIM, SIOR, Executive Vice President, 973.379.6644 x 131, aconte@blauberg.com
Peter J. Murano, Jr., Managing Executive Director, 973.379.6644 x 114, pjmurano@blauberg.com
Troy Schaafsma, Director, 973.379.6644 x 116, troys@blauberg.com

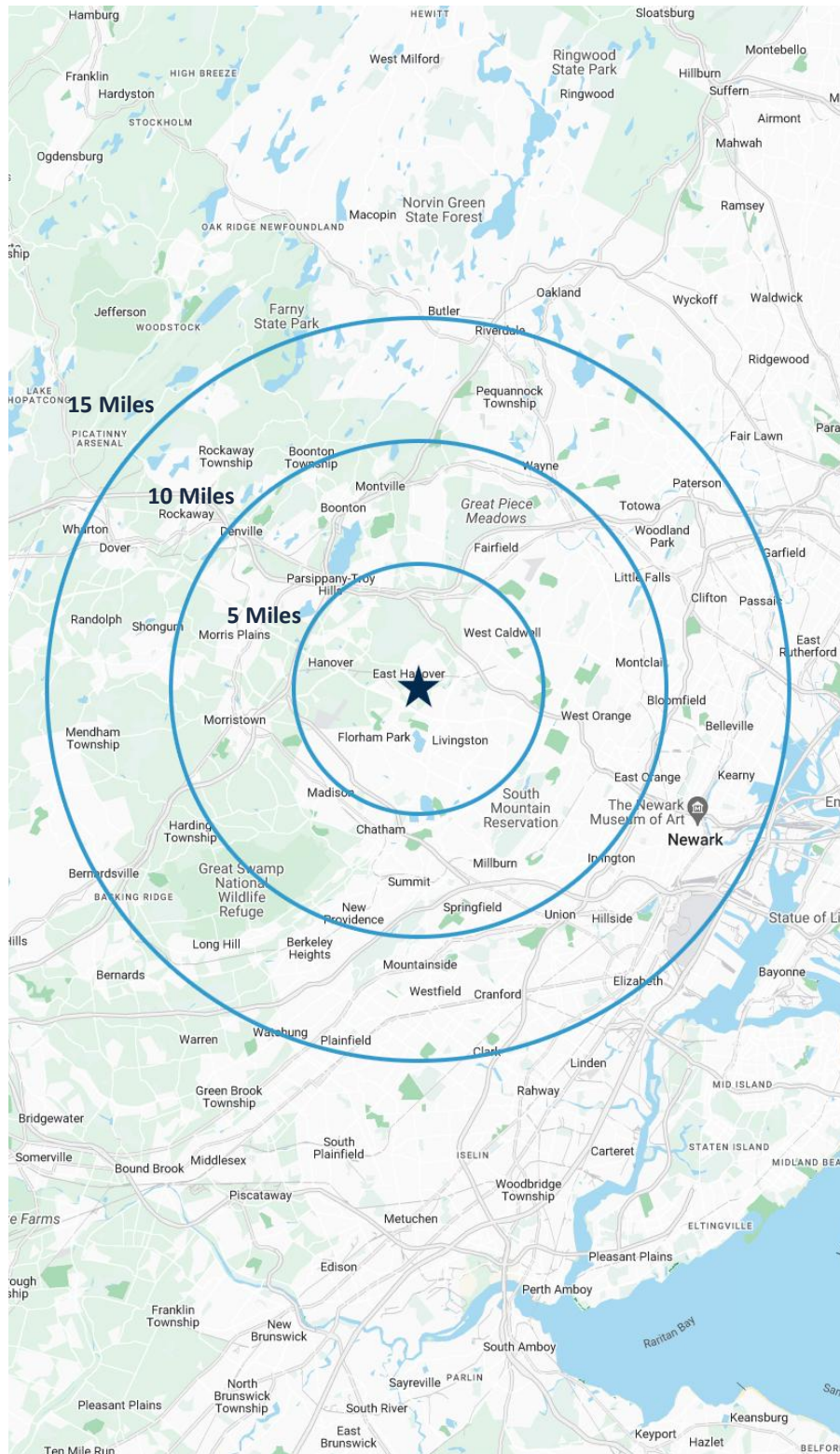
The information contained herein has been obtained from sources considered to be reliable, but no guarantee of its accuracy is made by this company. In addition, no representation is made respecting zoning, condition of title, dimensions, or any matters of a legal or environmental nature. Such matters should be referred to legal counsel for determination. Terms and conditions are subject to change without prior notice. Subject to errors and omissions.



For additional property information or to arrange an inspection, please contact the exclusive brokers:

Jason M. Crimmins, CCIM, SIOR, President, 973.379.6644 x 122, jmcrimmins@blauberg.com
 Alessandro (Alex) Conte, CCIM, SIOR, Executive Vice President, 973.379.6644 x 131, aconte@blauberg.com
 Peter J. Murano, Jr., Managing Executive Director, 973.379.6644 x 114, pjmurano@blauberg.com
 Troy Schaafsma, Director, 973.379.6644 x 116, troys@blauberg.com

The information contained herein has been obtained from sources considered to be reliable, but no guarantee of its accuracy is made by this company. In addition, no representation is made respecting zoning, condition of title, dimensions, or any matters of a legal or environmental nature. Such matters should be referred to legal counsel for determination. Terms and conditions are subject to change without prior notice. Subject to errors and omissions.



5 MILES

- Total Population: 152,359
- Households: 57,370
- Median Household Income: \$160,028
- Average Household Size: 2.6
- Transportation to Work: 83,068
- Labor Force: 123,672

10 MILES

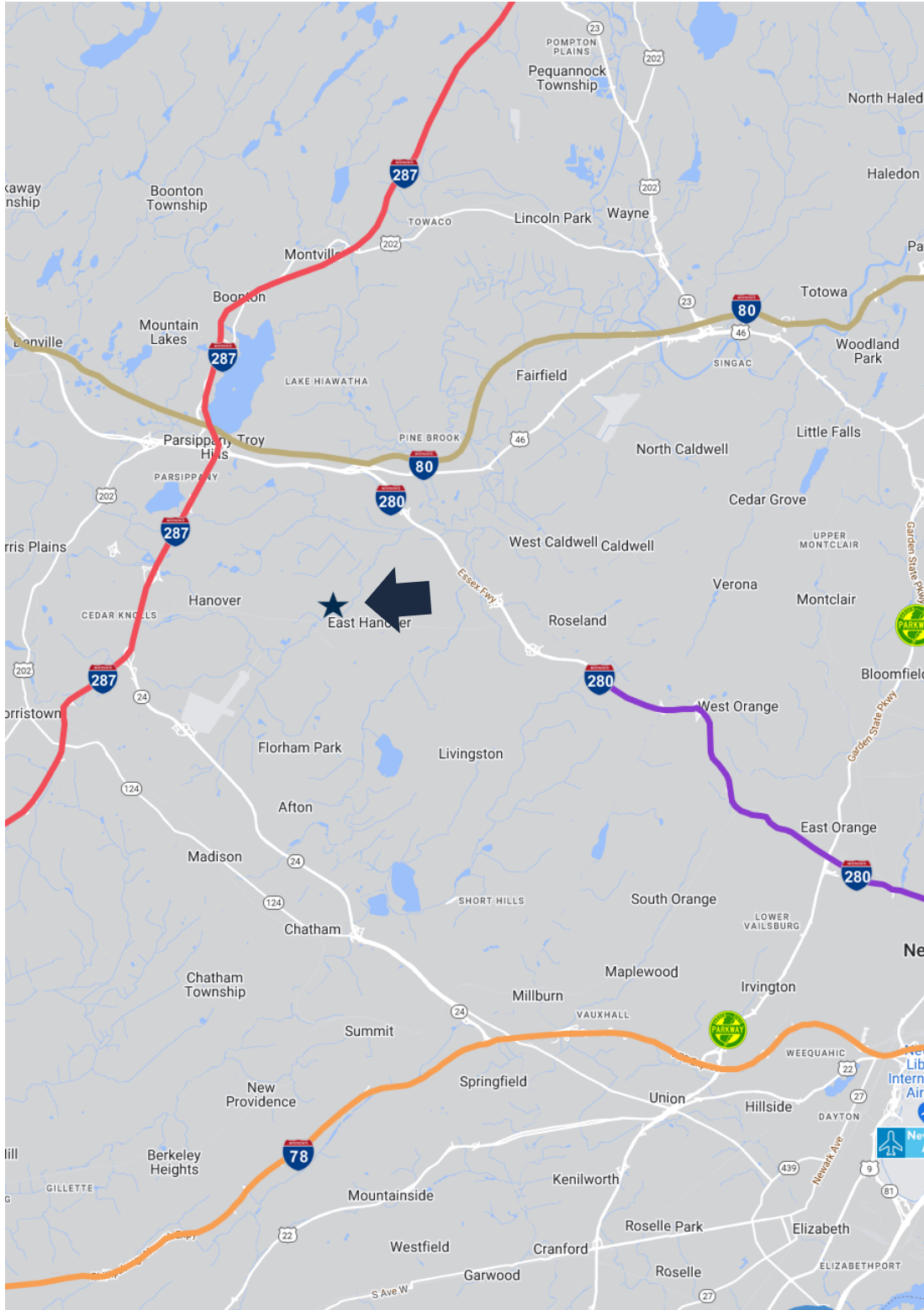
- Total Population: 969,419
- Households: 364,659
- Median Household Income: \$133,953
- Average Household Size: 2.6
- Transportation to Work: 518,180
- Labor Force: 778,667

15 MILES

- Total Population: 2.59M
- Households: 946,439
- Median Household Income: \$113,491
- Average Household Size: 2.7
- Transportation to Work: 1.36M
- Labor Force: 2.08M

For additional property information or to arrange an inspection, please contact the exclusive brokers:

Jason M. Crimmins, CCIM, SIOR, President, 973.379.6644 x 122, jmcrimmins@blauberg.com
Alessandro (Alex) Conte, CCIM, SIOR, Executive Vice President, 973.379.6644 x 131, aconte@blauberg.com
Peter J. Murano, Jr., Managing Executive Director, 973.379.6644 x 114, pjmurano@blauberg.com
Troy Schaafsma, Director, 973.379.6644 x 116, troys@blauberg.com



ACCESSIBILITY



1.0 MI
NJ Route 10



3.5 MI
I-280



5.5 MI
I-80



6.0 MI
I-287



11.5 MI
I-78

For additional property information or to arrange an inspection, please contact the exclusive brokers:

Jason M. Crimmins, CCIM, SIOR, President, 973.379.6644 x 122, jmcrimmins@blauberg.com
Alessandro (Alex) Conte, CCIM, SIOR, Executive Vice President, 973.379.6644 x 131, aconte@blauberg.com
Peter J. Murano, Jr., Managing Executive Director, 973.379.6644 x 114, pjmurano@blauberg.com
Troy Schaafsma, Director, 973.379.6644 x 116, troys@blauberg.com