

PARK PLAZA

741 Kenilworth Avenue
Charlotte, NC 28204

**Office Condo
For Sale or Lease**

±9,430 SF



Lincoln

Kristine Al-Taher
704.221.4833
kristine.altaher@lpc.com

Marshall Williamson
704.258.2244
marshall.williamson@lpc.com

4725 Piedmont Row Drive
Suite 800
Charlotte, NC 28210
www.lpc.com | 202.513.6700

PARK PLAZA

741 Kenilworth Avenue | Charlotte, NC 28204

Property Summary



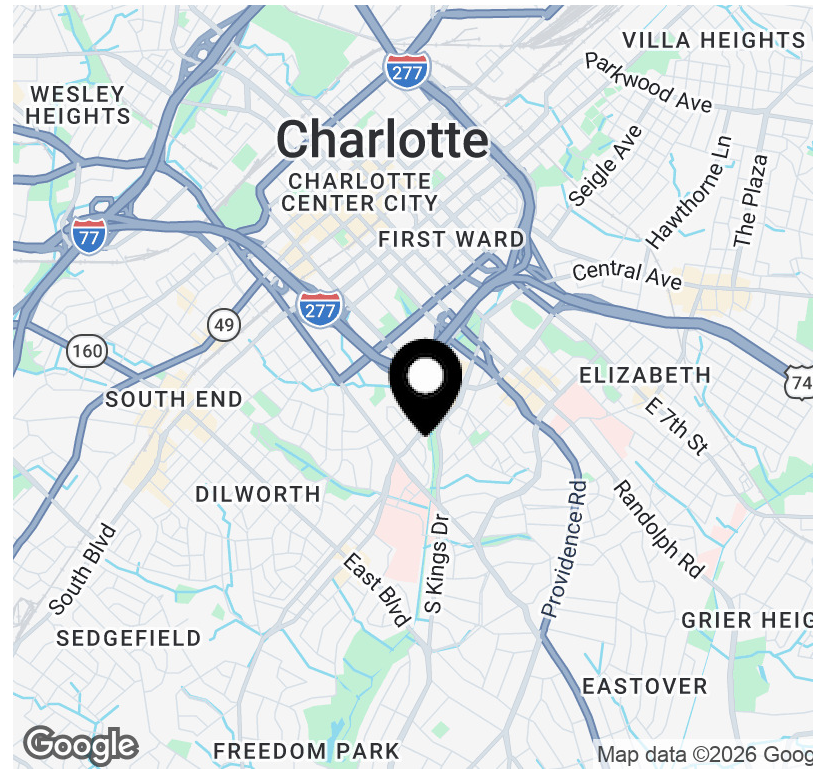
Property Description

Well-maintained office building located in Charlotte's desirable Midtown/Dilworth submarket. The property offers professional office space suitable for medical, nonprofit, and general office users, with a functional layout and on-site parking. Its central location provides quick access to Uptown, South End, and surrounding neighborhoods, along with nearby retail, dining, and services, making it an ideal option for tenants seeking convenience, accessibility, and an established business environment.

Offering Summary

Available SF:	±9,430 SF
Lot Size:	1.809 Acres
Building Size:	28,854 SF

Spaces	Lease Rate	Space Size
Suite 100 & 102	Negotiable	±9,430 SF



Kristine Al-Taher

704.221.4833

kristine.altaher@lpc.com

Marshall Williamson

704.258.2244

marshall.williamson@lpc.com

Lincoln

PARK PLAZA

741 Kenilworth Avenue | Charlotte, NC 28204

Location Overview



Property Highlights

- Centrally located office building in the Midtown/Dilworth submarket
- Professional office space ideal for medical, nonprofit, or general office use
- Convenient access to Uptown, South End, and major Charlotte corridors
- Surrounded by established offices, healthcare users, retail, and dining
- On-site parking available for tenants and visitors
- Well-maintained property with functional, efficient floor plans
- Strong visibility in a dense, walkable urban corridor

Location Overview

Located in Charlotte's Midtown/Dilworth area, just minutes from Uptown, South End, and major thoroughfares. The property sits in an established mixed-use corridor surrounded by professional offices, healthcare users, retail, and dining, offering convenient access and strong visibility in a well-connected urban submarket.



Kristine Al-Taher

704.221.4833

kristine.altaher@lpc.com

Marshall Williamson

704.258.2244

marshall.williamson@lpc.com

Lincoln

PARK PLAZA

741 Kenilworth Avenue | Charlotte, NC 28204

Property Photos



Kristine Al-Taher

704.221.4833

kristine.altaher@lpc.com

Marshall Williamson

704.258.2244

marshall.williamson@lpc.com

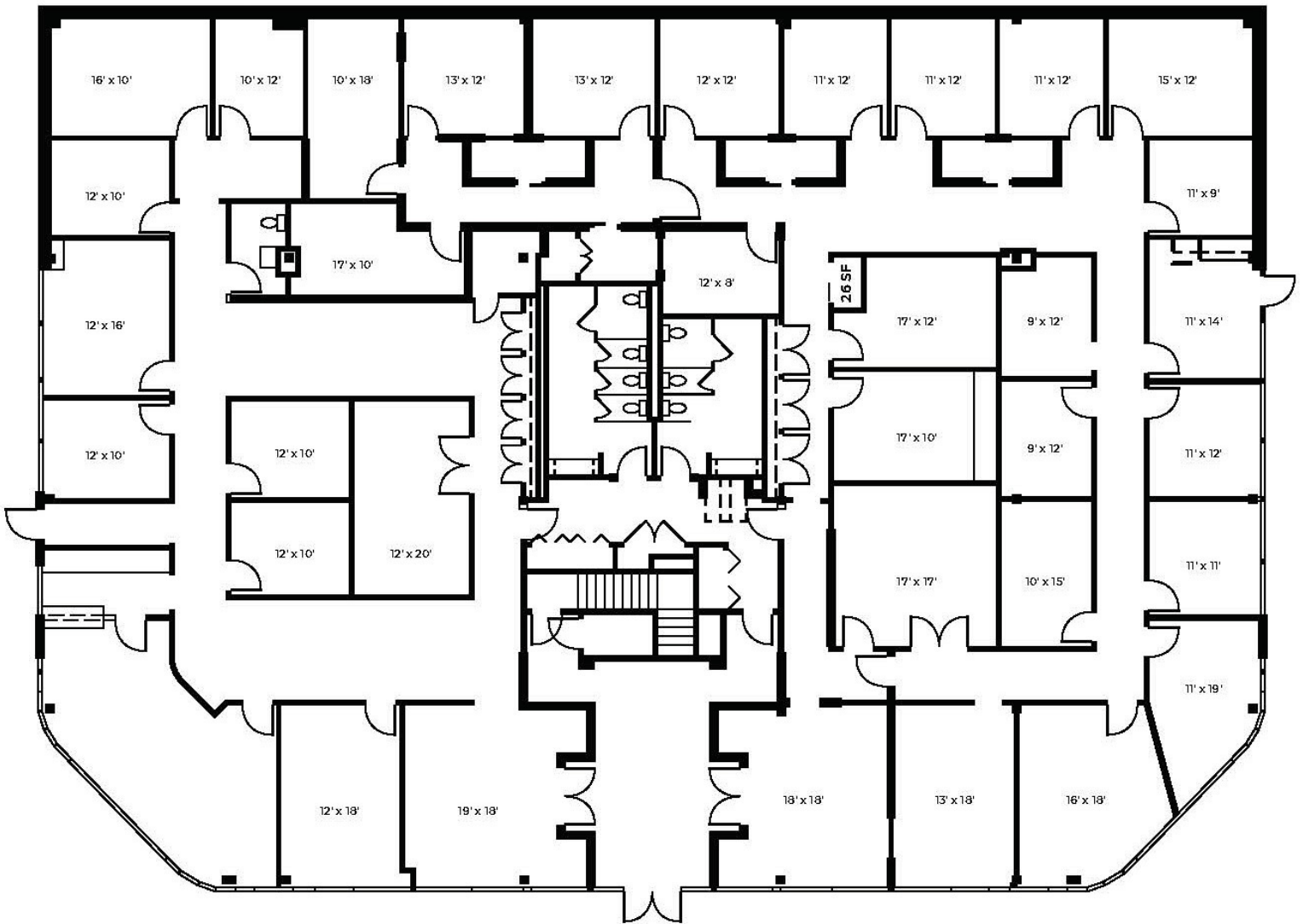
Lincoln

PARK PLAZA

741 Kenilworth Avenue | Charlotte, NC 28204

Suite 100 & 102

±9,430 SF



Suite	Lease Rate	Description
Suite 100 & 102	Negotiable	±9,430 SF Office condo available for sale or lease (entire floor) Easily accessible 1st floor space

Kristine Al-Taher
704.221.4833
kristine.altaher@lpc.com

Marshall Williamson
704.258.2244
marshall.williamson@lpc.com

Lincoln



PARK PLAZA

741 Kenilworth Avenue
Charlotte, NC 28204

Kristine Al-Taher
704.221.4833
kristine.altaher@lpc.com

**Marshall
Williamson**
704.258.2244
marshall.williamson@lpc.com

Lincoln

4725 Piedmont Row Drive
Suite 800
Charlotte, NC 28210

www.lpc.com