

FOR LEASE

2ND GENERATION RESTAURANT

25980 Highway 243 | Idyllwild, CA 92549



STEVE CASTELLANOS
951.600.8634 x703
stevec@svn.com
CalDRE #01922901

GABRIELA DEVINE
951.600.8634 x706
gabriela.devine@svn.com
CalDRE #02046396



OFFERING SUMMARY

LEASE RATE:	See Page 2
BUILDING SIZE:	±6,687 SF
LOT SIZE:	±21,780 SF
ZONING:	Retail Trade
MARKET:	Inland Empire

PROPERTY HIGHLIGHTS

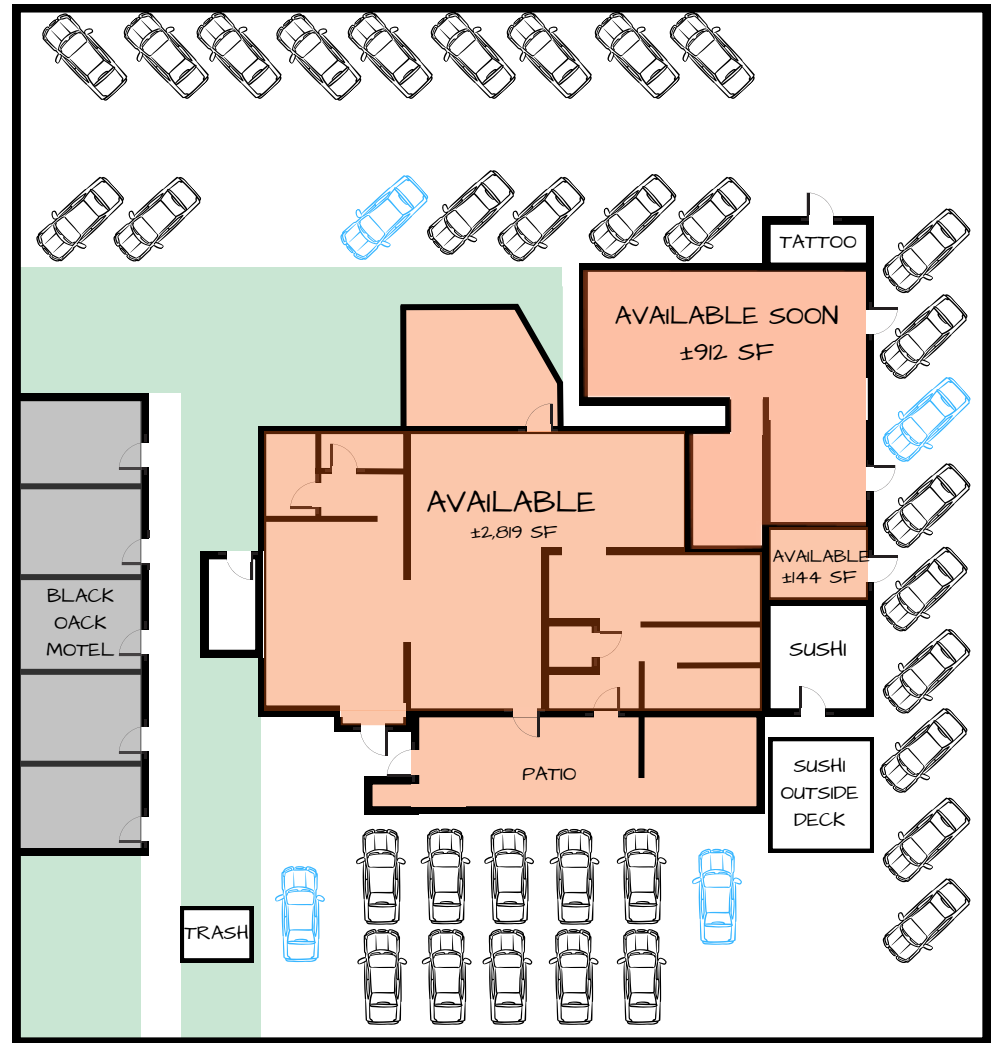
- Fully built-out 2nd generation restaurant space with indoor seating plus additional seating on outdoor patio
- Conveniently situated off Highway 243 in the charming town of Idyllwild, California, this restaurant benefits from a prime location that attracts both locals and tourists.

STEVE CASTELLANOS
951.600.8634 x703
stevec@svn.com
CalDRE #01922901

GABRIELA DEVINE
951.600.8634 x706
gabriela.devine@svn.com
CalDRE #02046396



TENANT ROSTER		
SIZE	TENANT	PRICE/MO
±2,819 SF	VACANT	\$7,000
±862 SF	SUSHI	-
±144 SF	VACANT	\$2,000
±912 SF	AVAILABLE SOON	\$2,500
±225 SF	TATTOO	-



STEVE CASTELLANOS
 951.600.8634 x703
 stevec@svn.com
 CalDRE #01922901

GABRIELA DEVINE
 951.600.8634 x706
 gabriela.devine@svn.com
 CalDRE #02046396





STEVE CASTELLANOS
951.600.8634 x703
stevec@svn.com
CalDRE #01922901

GABRIELA DEVINE
951.600.8634 x706
gabriela.devine@svn.com
CalDRE #02046396





STEVE CASTELLANOS
 951.600.8634 x703
 stevec@svn.com
 CalDRE #01922901

GABRIELA DEVINE
 951.600.8634 x706
 gabriela.devine@svn.com
 CalDRE #02046396





- State California
- County Riverside
- Mayor Mayor Max III
- Website idyllwildcalifornia.com



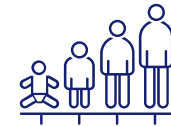
3-Mile Radius



POPULATION



4,097
POPULATION



53.4
MEDIAN AGE



1,923
HOUSEHOLDS

EMPLOYMENT



60%
WHITE COLLAR



19%
BLUE COLLAR



23%
SERVICES



5.2%
UNEMPLOYMENT RATE

EDUCATION



19%
HIGH SCHOOL
GRADUATE



30%
SOME COLLEGE



44%
BACHELORS/GRAD/
PROF DEGREE

STEVE CASTELLANOS
951.600.8634 x703
stevec@svn.com
CalDRE #01922901

GABRIELA DEVINE
951.600.8634 x706
gabriela.devine@svn.com
CalDRE #02046396

