

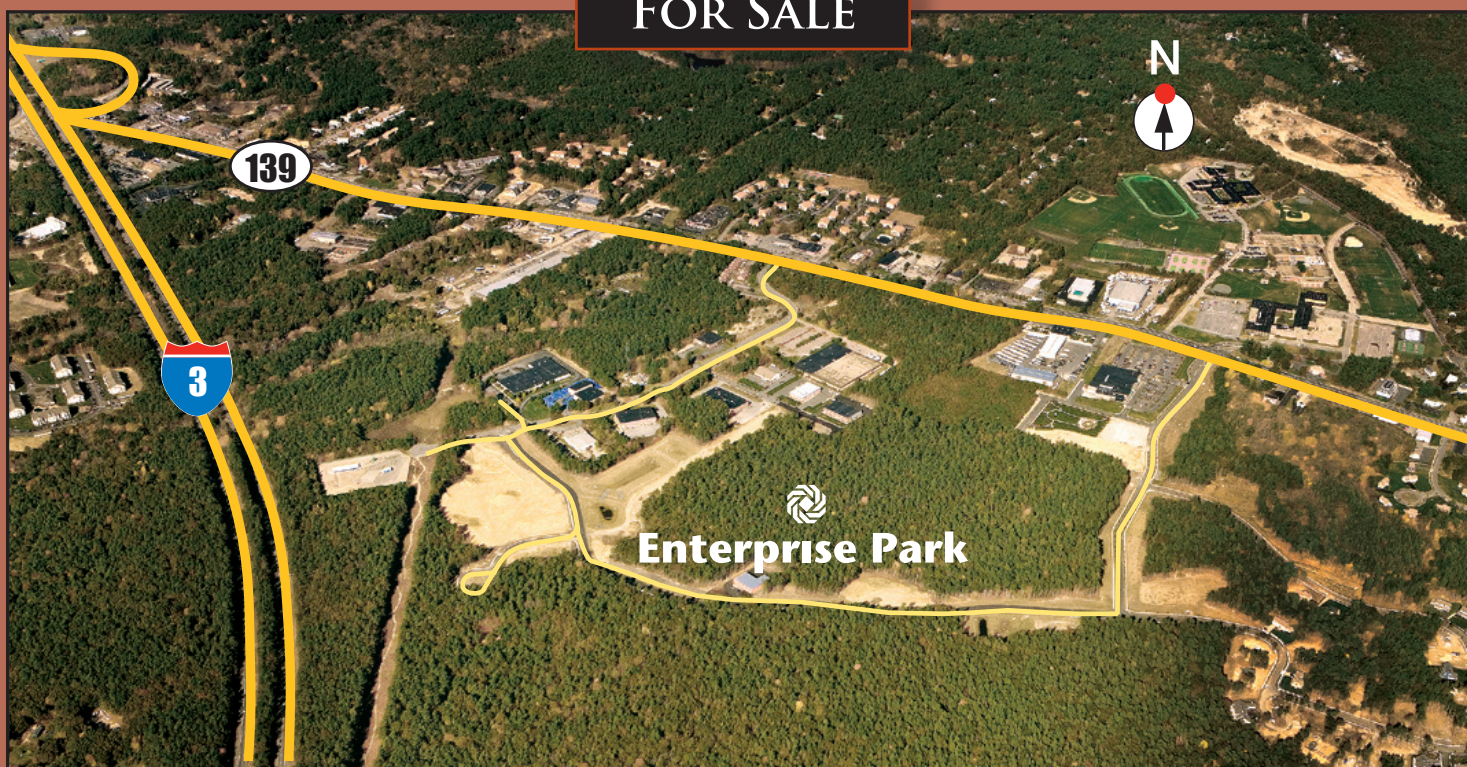


# Enterprise Park

*Exclusively Offered by*

RADER PROPERTIES, INC

FOR SALE



## *The South Shore's New Business Park part of an established multi use development*

Located in Marshfield, Mass., Enterprise Park is located 1 mile from the Route 139 exit, off Route 3. This naturally wooded, 140 acre master planned, mixed-use business park boasts 76 acres available for sale or development. Individual sites can accommodate buildings from 10,000 SF to 300,000 SF. All roads, in-ground utilities and State permits are in place. Sites are available for immediate construction.



Please contact: David Mitchell, or Jim Rader • 781-681-9000  
dmitchell@raderproperties.net • jrader@raderproperties.net



### Specifications

**Enterprise Park:** 140 acres total

**Acres Available for Sale:** 76.29 acres total

**Zoning:** Industrial and PMUD Overlay District

**Allowed Uses:** Office, light manufacturing, distribution, medical, recreational, retail, and residential

**Proposed Buildings:** Building sizes will range from 10,000 SF to 300,000 SF  
Total Park build out will exceed 1,000,000 SF

### Utilities

Electric: NStar

Gas: Bay State Gas

Water: Town of Marshfield

Sewer: Private

### Ownership Amenities:

- Master Planned Business Park
- Excellent highway access
- Fast, local permitting process
- Access to strong skilled Plymouth County labor force
- All infrastructure in place
- Excellent soil conditions
- Green building standards in place
- Build-to-Suit services available

# Enterprise Park

*Exclusively Offered by*

## RADER PROPERTIES, INC

Please contact: David Mitchell, or Jim Rader • 781-681-9000  
dmitchell@raderproperties.net • jrader@raderproperties.net