

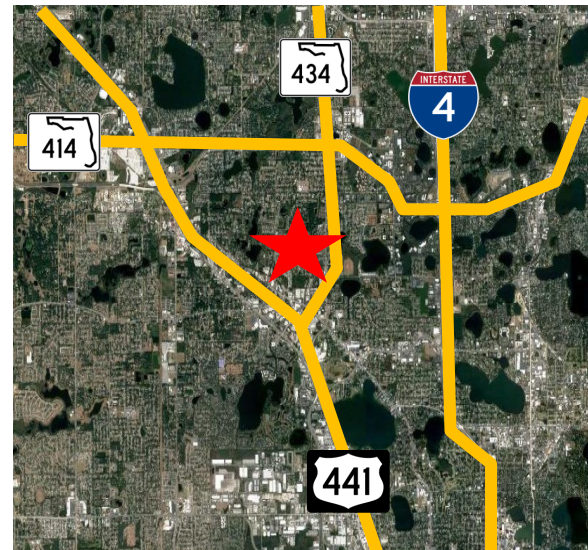
# FOR LEASE

**\$13.00 PSF NNN**



## 3031 Gusty Lane, Orlando, FL 32810

|                        |                      |
|------------------------|----------------------|
| <b>Unit #2:</b>        | <b>2,500 ± SF</b>    |
| <b>Warehouse:</b>      | <b>2,250 ± SF</b>    |
| <b>Office:</b>         | <b>250 ± SF</b>      |
| <b>Roll Up Doors:</b>  | <b>(1) 10'x10</b>    |
| <b>Ceiling Height:</b> | <b>10'-14'</b>       |
| <b>Orange Zoning:</b>  | <b>C-3</b>           |
| <b>Power:</b>          | <b>3 Phase</b>       |
| <b>Year Built:</b>     | <b>1982</b>          |
| <b>CAM:</b>            | <b>\$2.50 (Est.)</b> |



**Shaun Stafstrom**  
Sales Associate

Mobile: (407) 383-1442

Shaun @mcnultygroupinc.com

Office Address:  
2315 Lynx Lane  
Suite # 6

Orlando, Florida 32804

www.mcnultygroupinc.com

