

# 350

## IGNACIO BOULEVARD

NOVATO | CALIFORNIA

# HIGHLY IMPROVED OWNER/ USER OPPORTUNITY



**NEWMARK**

**GRAHAM STREET REALTY**  
REAL ESTATE INVESTMENTS

**FOR SALE**

\$3,358,000 (±\$200/USF)

±16,792 USF plus ±2,890 USF of bonus deck space



Newmark, as exclusive advisor, is pleased to announce the opportunity to purchase **350 Ignacio Boulevard in Novato, California**. The well improved commercial building is a 3-story professional office building, with multiple large decks and balconies throughout the property.

The total offering is  $\pm 16,792$  useable square feet with an additional  $\pm 2,890$  useable square feet of deck space shared between 8 private patios. The offering also includes  $\pm 121$  useable square feet leased to Bank of America as an ATM.

The building is elevator served and has been well improved and maintained, with impressive lobbies and common area features. 350 Ignacio Boulevard also benefits from a parking ratio of  $\pm 4.62/1000$  between the exclusive parking and shared parking on-site. The building was originally constructed in 1986.

If a Buyer does not want to occupy the availability in its entirety, the offering is currently split into eight (8) commercial condominiums. A Buyer may occupy the portion that fits their needs, and lease out other units to create a cash flow.





# OFFERING OVERVIEW

350 IGNACIO BOULEVARD | NOVATO



±16,792 USF for sale in a well-maintained Class A office building



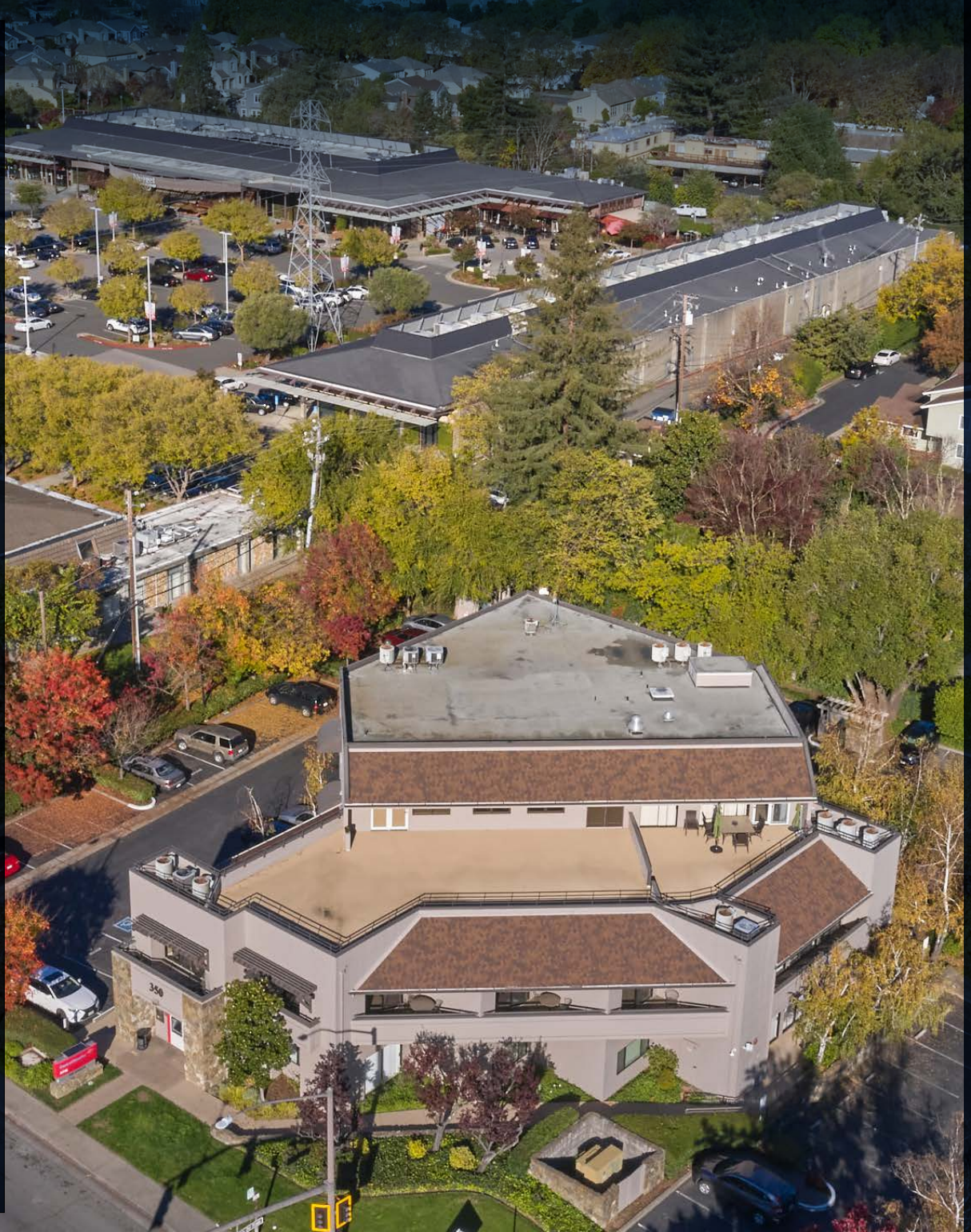
Availabilities feature impressive glass-line, with plentiful natural light and operable windows throughout. Many areas of the building offer multiple private decks with hillside views.



Adjacent to Pacheco Plaza Shopping Center, walkable amenities include banks, restaurants, high-end grocery stores, and fitness facilities.

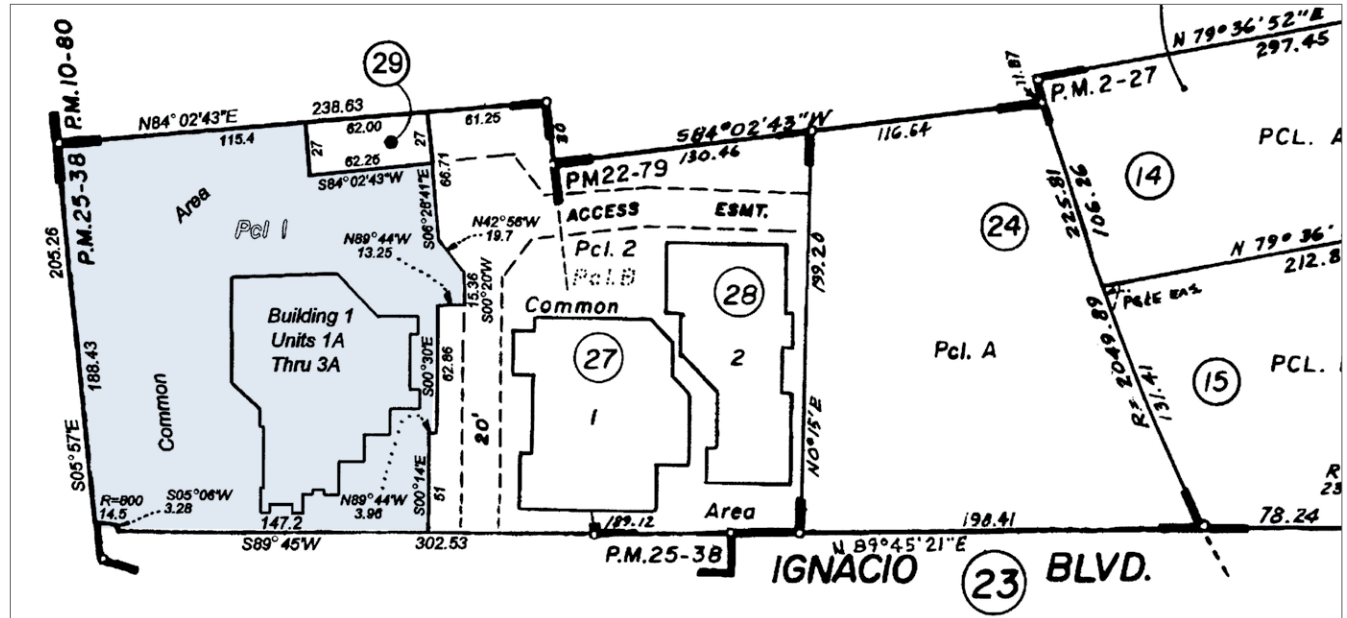


Up to ±4.62/1000 parking ratio between exclusive and shared parking stalls on-site.





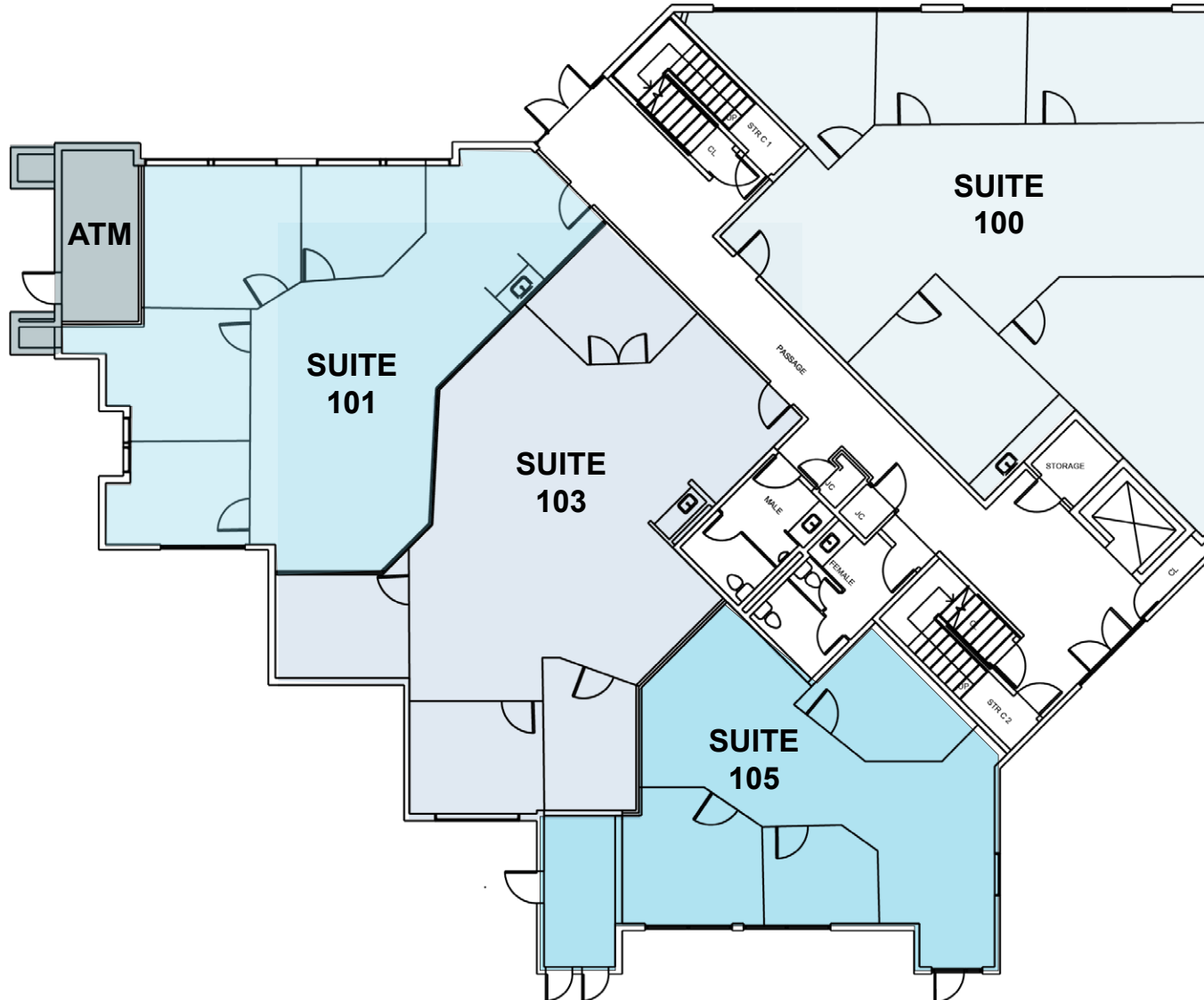
350 Ignacio Boulevard is located within the jurisdiction of the City of Novato and is zoned Planned District (PD) with a General Plan Land Use Classification of General Commercial (CG).



LEVEL	USEABLE SQUARE FEET	NOTES
FIRST FLOOR	±6,912	First floor includes a ±121 USF unit leased to Bank of America as an ATM.
SECOND FLOOR	±6,505	Second floor offers access to 7 private patios, totaling an additional ±648 USF.
THIRD FLOOR	±3,375	Penthouse offers a full kitchen with a stove, showers, and an additional ±2,242 USF private deck.

LEVEL	USEABLE SQUARE FEET	NOTES
FIRST FLOOR	±6,912	First floor includes a ±121 USF unit leased to Bank of America as an ATM.

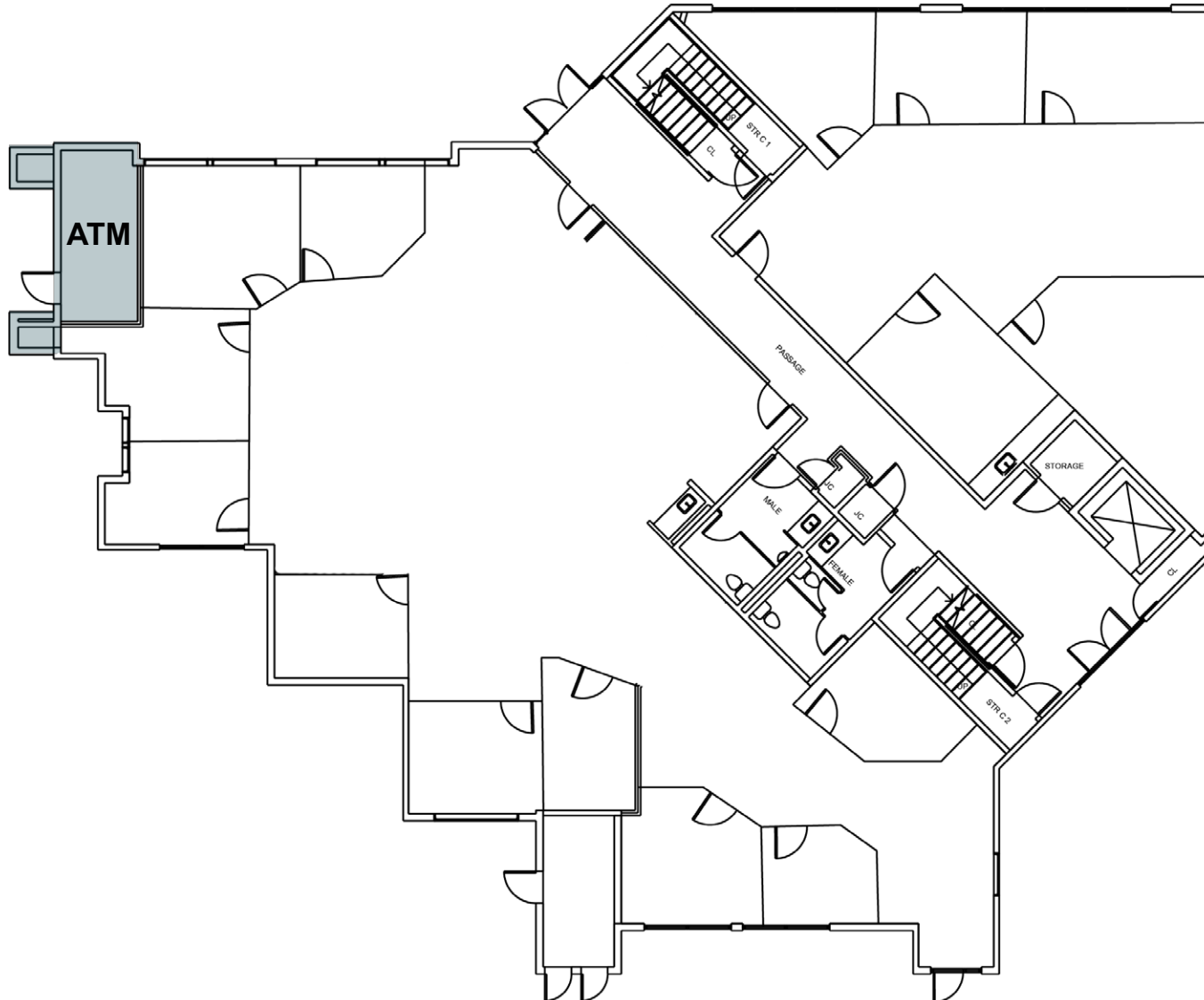
**EXISTING FIRST FLOOR PLAN**



FLOOR PLANS NOT TO SCALE

LEVEL	USEABLE SQUARE FEET	NOTES
FIRST FLOOR	±6,912	First floor includes a ±121 USF unit leased to Bank of America as an ATM.

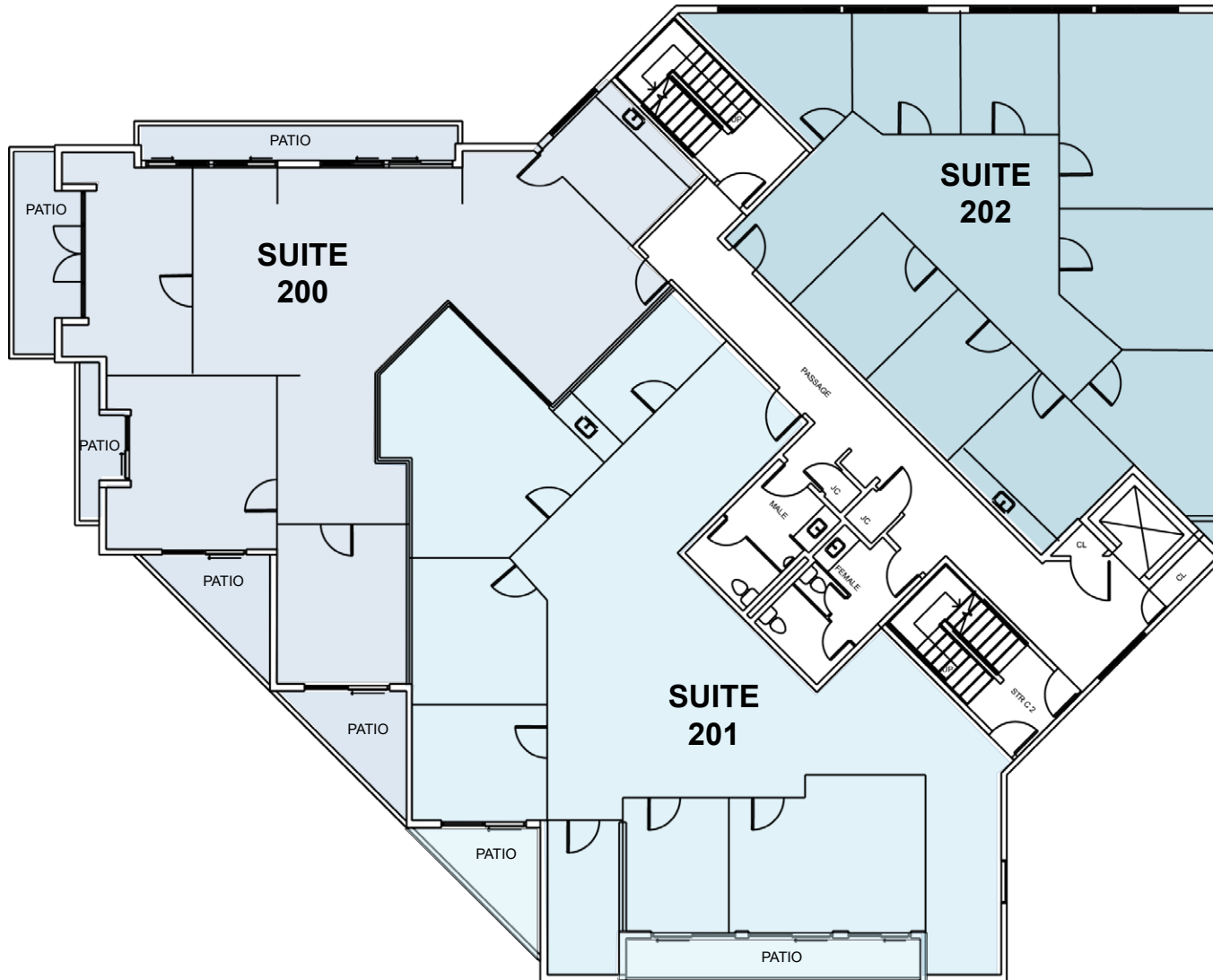
**POTENTIAL COMBINED FIRST FLOOR PLAN**



FLOOR PLANS NOT TO SCALE

LEVEL	USEABLE SQUARE FEET	NOTES
SECOND FLOOR	±6,505	Second floor offers access to 7 private patios, totaling an additional ±648 USF.

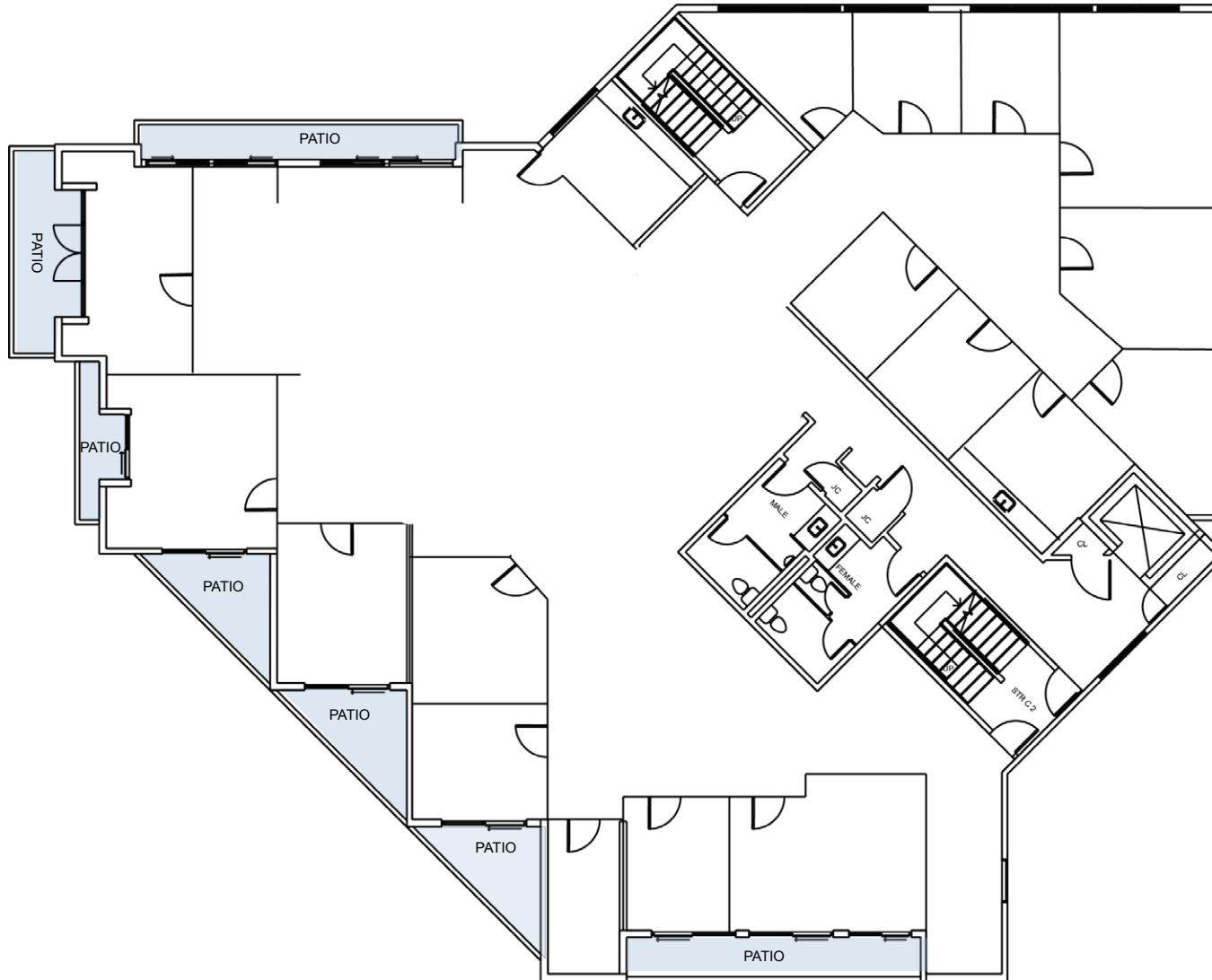
**EXISTING SECOND FLOOR PLAN**



FLOOR PLANS NOT TO SCALE

LEVEL	USEABLE SQUARE FEET	NOTES
SECOND FLOOR	±6,505	Second floor offers access 7 private patios, totaling ±648 useable square feet

**POTENTIAL COMBINED SECOND FLOOR PLAN**

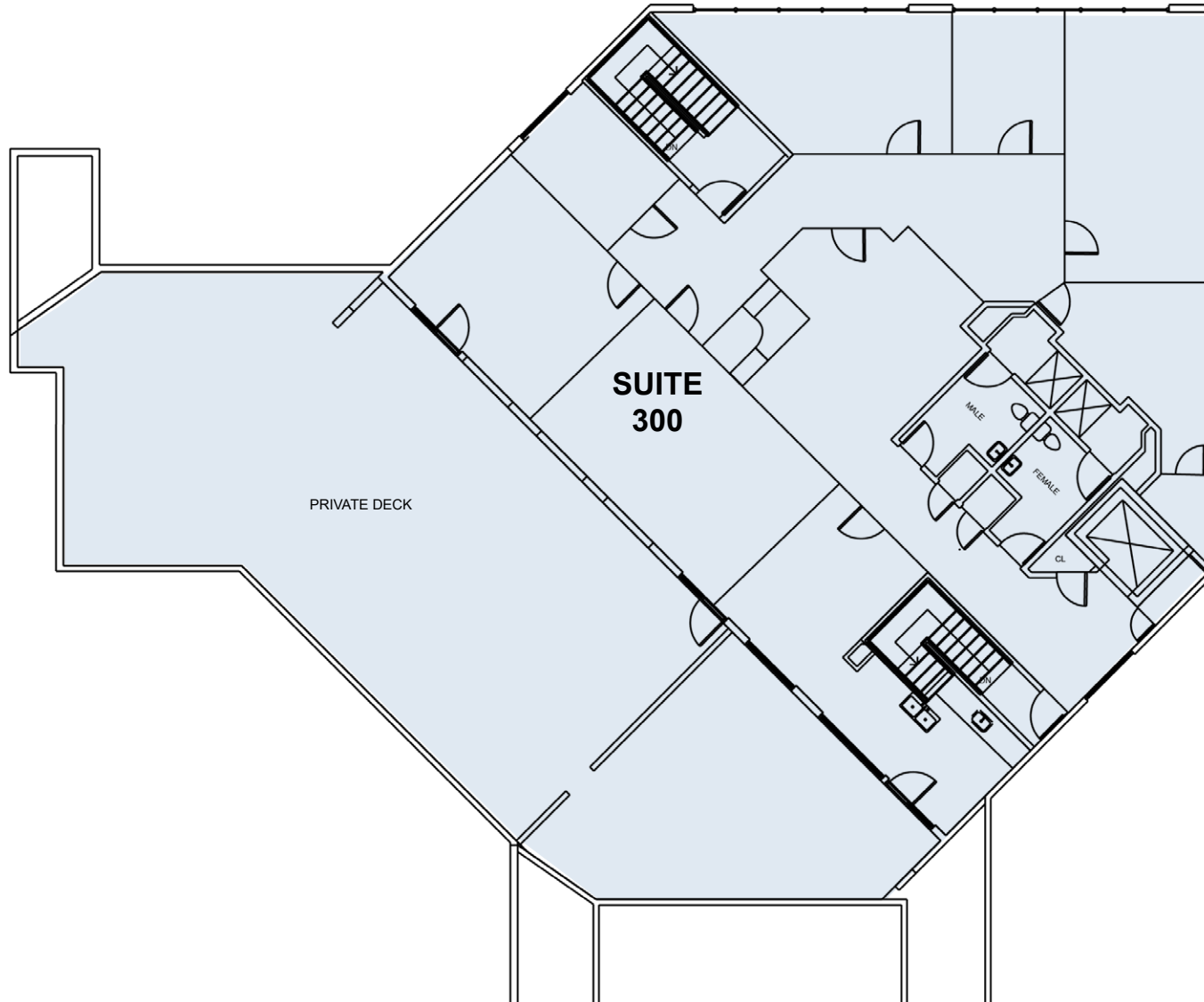


FLOOR PLANS NOT TO SCALE



LEVEL	USEABLE SQUARE FEET	NOTES
THIRD FLOOR	±3,375	Penthouse offers a full kitchen with a range, showers, and a 2,242 USF private deck

## EXISTING THIRD FLOOR PLAN



FLOOR PLANS NOT TO SCALE













1

800 A STREET  
SAN RAFAEL, CA

Date Sold: 3/30/2023

Sale Price: \$6,600,000

Price/SF: \$472.68

Year Built: 1920

Building Size: ±13,963 SF

Land Area: ±0.38 Acres

Parking Ratio: ±0.64/1000 SF



2

711 GRAND AVENUE  
SAN RAFAEL, CA

Date Sold: 11/28/2022

Sale Price: \$6,940,000

Price/SF: \$245.62

Year Built: 1985

Building Size: ± 28,255 SF

Land Area: ±0.66 Acres

Parking Ratio: ±4/1000 SF



3

11 PROFESSIONAL CENTER PKWY  
SAN RAFAEL, CA

Date Sold: 2/25/2022

Sale Price: \$2,800,000

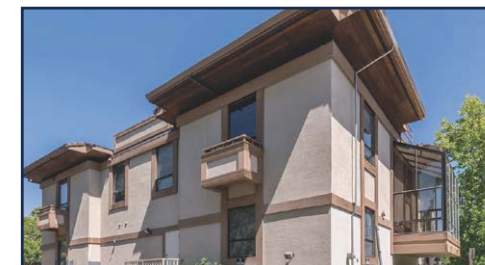
Price/SF: \$362.23

Year Built: 1971

Building Size: ±7,730 SF

Land Area: ±0.91 Acres

Parking Ratio: ±4/1000 SF



4

915 DIABLO AVENUE  
NOVATO, CA

Date Sold: 9/1/2023

Sale Price: \$1,500,000

Price/SF: \$221.40

Year Built: 1955

Building Size: ±6,775 SF

Land Area: ±0.31 Acres

Parking Ratio: ±2.66/1000 SF



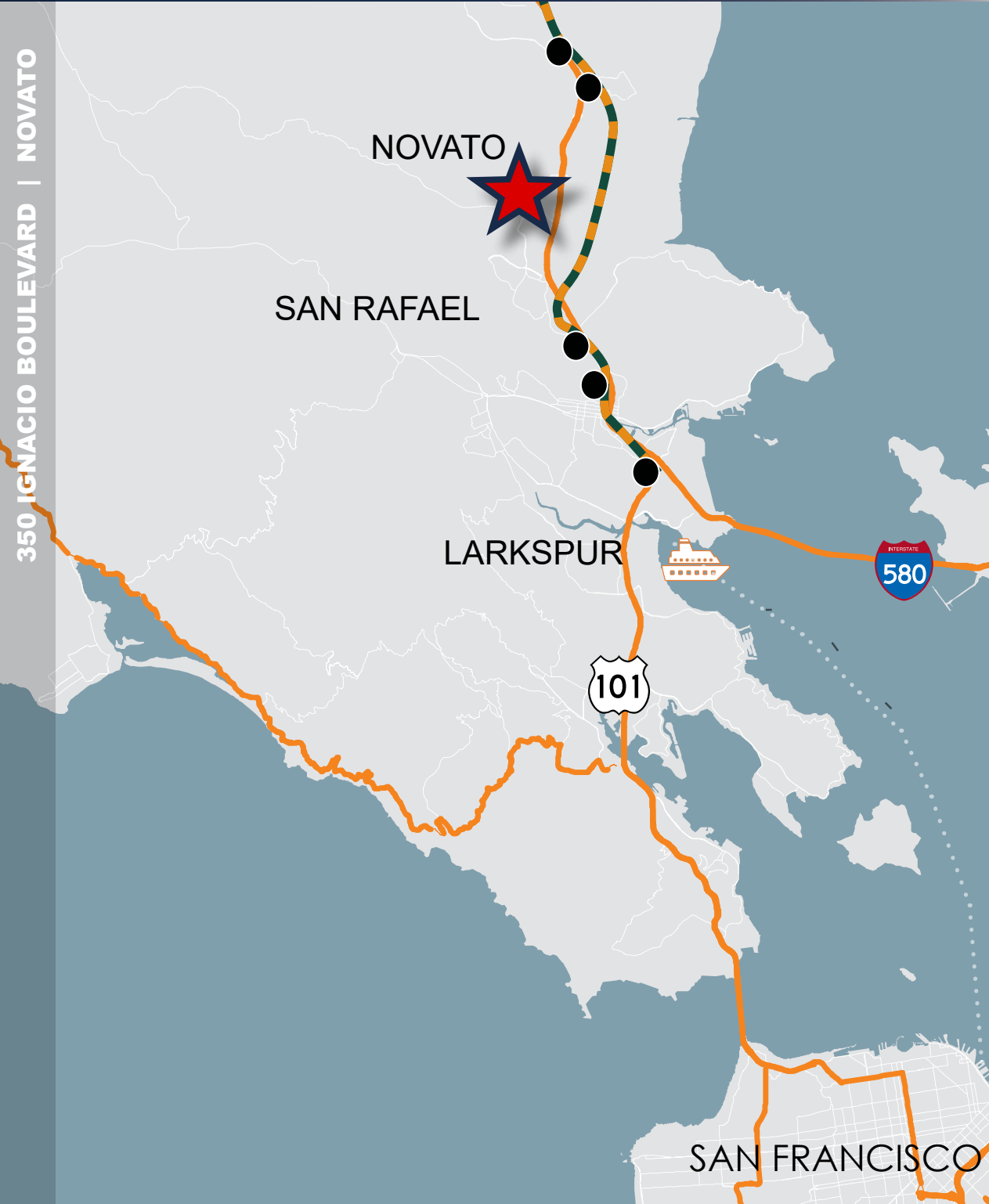
# NEIGHBORHOOD AMENITIES

350 IGNACIO BOULEVARD | NOVATO



NEWMARK / GRAHAM STREET REALTY

# TRANSPORTATION MAP



WALK TO PACHECO PLAZA SHOPPING CENTER 3 MINUTES

WALK TO GOLDEN GATE TRANSIT BUS 4 MINUTES

DRIVE TO LARKSPUR LANDING FERRY TERMINAL 12 MILES

DRIVE TO PETALUMA 15 MILES

BIKE TO SAN FRANCISCO 28 MILES



Route Larkspur to Santa Rosa



Smart Stations



# 350

## IGNACIO BOULEVARD

NOVATO | CALIFORNIA

### HADEN ONGARO

415.526.7649

haden.ongaro@nmrk.com

CA DRE #00916960

1101 Fifth Avenue, Suite 370, San Rafael, CA 94901

### ALISA BELEW

415.526.7663

alisa.belew@nmrk.com

CA DRE #01821371

### JOE MCCALLUM

415.526.7651

joe.mccallum@nmrk.com

CA DRE #02048815

nmrk.com

The distributor of this communication is performing acts for which a real estate license is required. The information contained herein has been obtained from sources deemed reliable but has not been verified and no guarantee, warranty or representation, either express or implied, is made with respect to such information. Terms of sale or lease and availability are subject to change or withdrawal without notice.

The dimensions shown herein are not intended to be sufficiently accurate enough to use for computation of floor area or air space volume in any or all of the Units. These marketing materials are prepared for diagrammatic purposes only and they should not be used to determine square footage. These marketing materials are prepared using architectural plans and structural engineering plans and show the measurements from these plans for a particular floor plan type, but are not intended to be 100% accurate for any particular Condominium. These diagrams do not take into consideration differences between Condominiums with the same floor plans that may require changes to as-built conditions. As-built conditions will control. Square footage computation methods vary; therefore, anyone purchasing a Condominium must personally inspect the Unit and Exclusive Use Area to be satisfied with the actual layout and size of the Condominium before they purchase such Condominium and agree that they shall not base their decision on the measurements shown on these marketing materials. April 29, 2024 3:25 PM

**NEWMARK**

**GRAHAM STREET REALTY**  
REAL ESTATE INVESTMENTS