



Visit Our  
Website



# MEDICAL OFFICE SPACE FOR LEASE

2000-2100 SouthBridge Pkwy B'ham, AL 35209

Medical Office space for lease in the Midtown submarket. Convenient access off on Red Mountain Expressway

## SOUTHBRIDGE - PROPERTY HIGHLIGHTS

- Modernized corridors and tenant common areas
- Centrally located between Central Business District, Homewood & Mountain Brook
- Free surface parking
- 24 hour key-fob access
- Walking path and outdoor eating area adjacent to building
- Building health club
- Deli on-site with catering available
- Synovus Bank; Embassy Suites Hotel; First Horizon Bank; Ruth's Chris
- On-site property management provided by YMP Real Estate Management
- Easy access to major transportation arteries
- After hours security
- Common conference facility



### ASKING RATE:

\$26.00/rsf Full Service



### AVAILABLE SPACE:

±16,001 RSF on 1st Floor



### LOCATION:

Conveniently located off of Red Mtn Expressway



### PARKING:

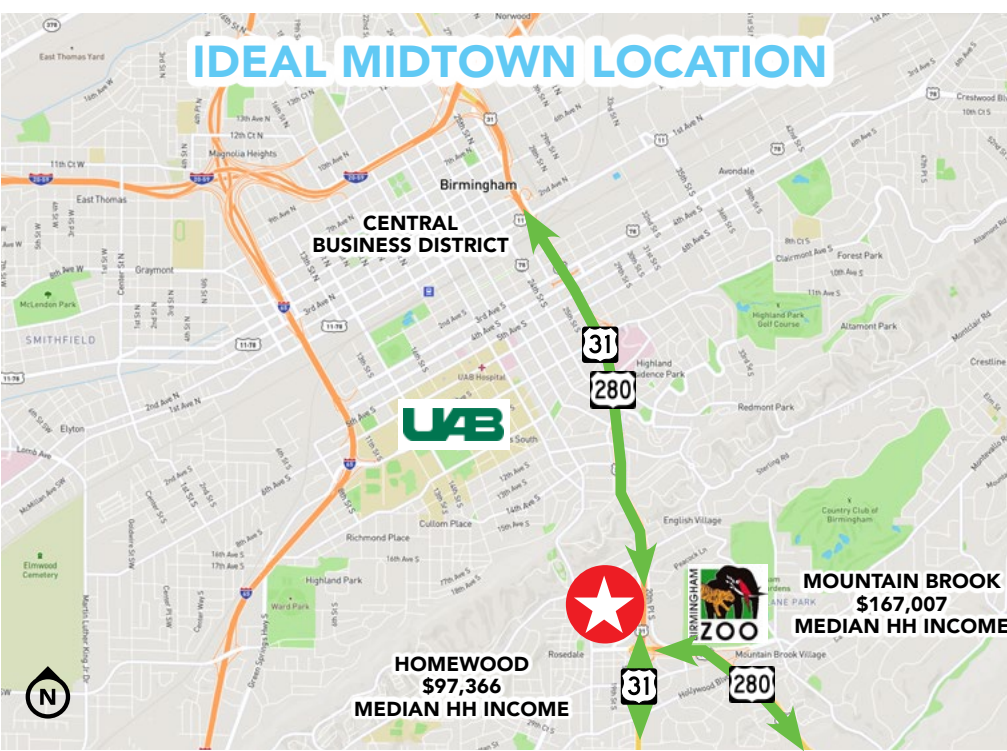
Free surface parking



### ON-SITE MANAGEMENT:

YMP Real estate management on-site

## IDEAL MIDTOWN LOCATION



**HARBERT**  
REALTY SERVICES

TANNER SUMNERS

tsumners@harbertrealty.com | 205.458.8103

CHARLIE NORTON

cnorton@harbertrealty.com | 205.458.8116

**For More Information: HarbertRealty.com**  
2 North 20th Street, #1700, Birmingham, AL 35203

The information contained herein has been obtained from sources deemed reliable, however, HRS makes no guarantees, warranties or representation as to its completeness or accuracy thereof. The presentation of this property is submitted subject to errors, omissions, change of price or conditions, prior to sale or lease or withdrawal without notice.

# MEDICAL OFFICE SPACE FOR LEASE

2000-2100 SouthBridge Pkwy B'ham, AL 35209

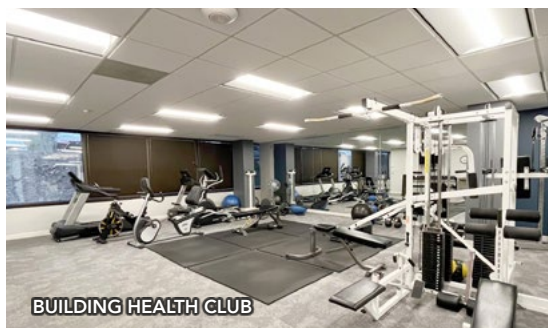
Medical Office space for lease in the Midtown submarket. Convenient access off on Red Mountain Expressway



BUILDING LOBBY



## SouthBridge



BUILDING HEALTH CLUB



TENANT SPACE



SHARED CONFERENCE



TENANT SPACE



TENANT SPACE



**TANNER SUMNERS**  
tsumners@harbertrealty.com | 205.458.8103

**CHARLIE NORTON**  
cnorton@harbertrealty.com | 205.458.8116

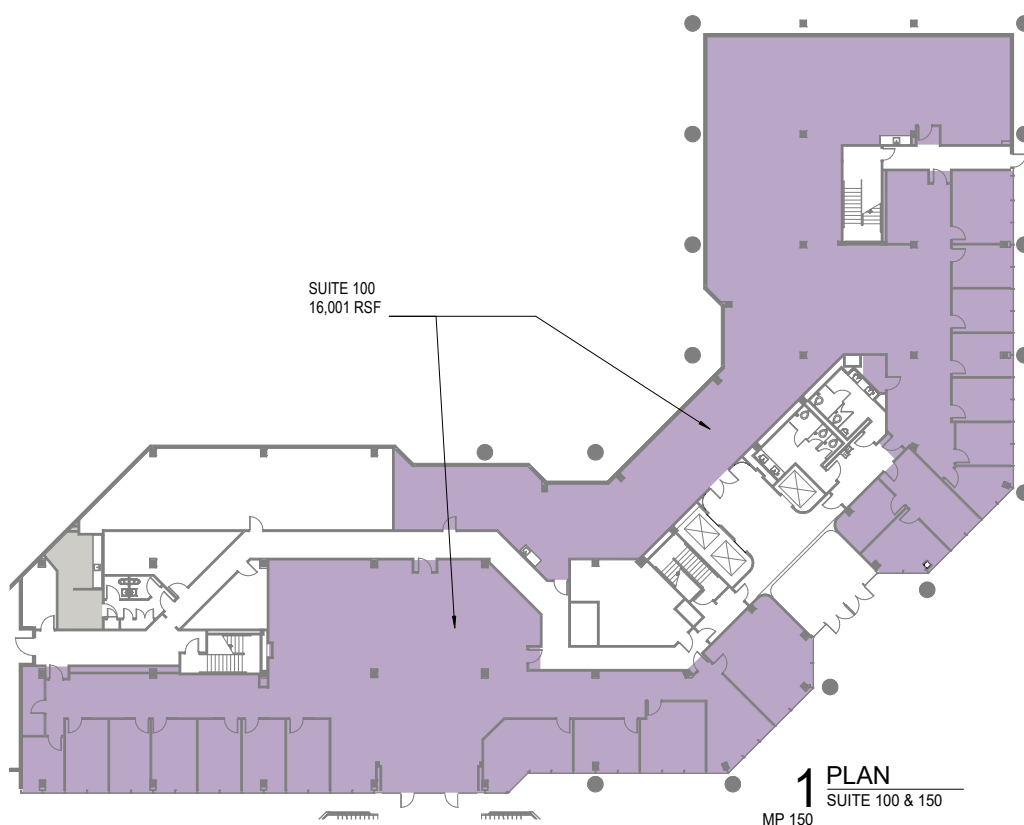
**For More Information: HarbertRealty.com**  
2 North 20th Street, #1700, Birmingham, AL 35203

The information contained herein has been obtained from sources deemed reliable, however, HRS makes no guarantees, warranties or representation as to its completeness or accuracy thereof. The presentation of this property is submitted subject to errors, omissions, change of price or conditions, prior to sale or lease or withdrawal without notice.

# MEDICAL OFFICE SPACE FOR LEASE

2000-2100 SouthBridge Pkwy B'ham, AL 35209

Medical Office space for lease in the Midtown submarket. Convenient access off on Red Mountain Expressway



**TANNER SUMNERS**  
tsumners@harbertrealty.com | 205.458.8103

**CHARLIE NORTON**  
cnorton@harbertrealty.com | 205.458.8116

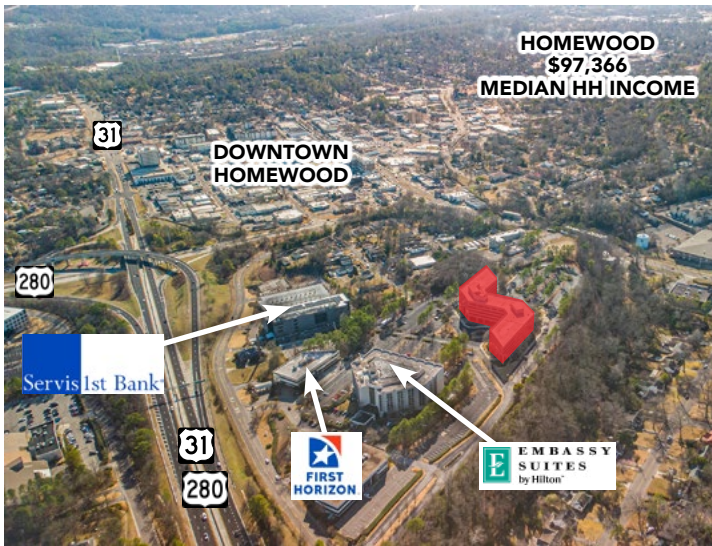
**For More Information: HarbertRealty.com**  
2 North 20th Street, #1700, Birmingham, AL 35203

The information contained herein has been obtained from sources deemed reliable, however, HRS makes no guarantees, warranties or representation as to its completeness or accuracy thereof. The presentation of this property is submitted subject to errors, omissions, change of price or conditions, prior to sale or lease or withdrawal without notice.

# MEDICAL OFFICE SPACE FOR LEASE

2000-2100 SouthBridge Pkwy B'ham, AL 35209

Medical Office space for lease in the Midtown submarket. Convenient access off on Red Mountain Expressway



TANNER SUMNERS  
tsumners@harbertrealty.com | 205.458.8103

CHARLIE NORTON  
cnorton@harbertrealty.com | 205.458.8116

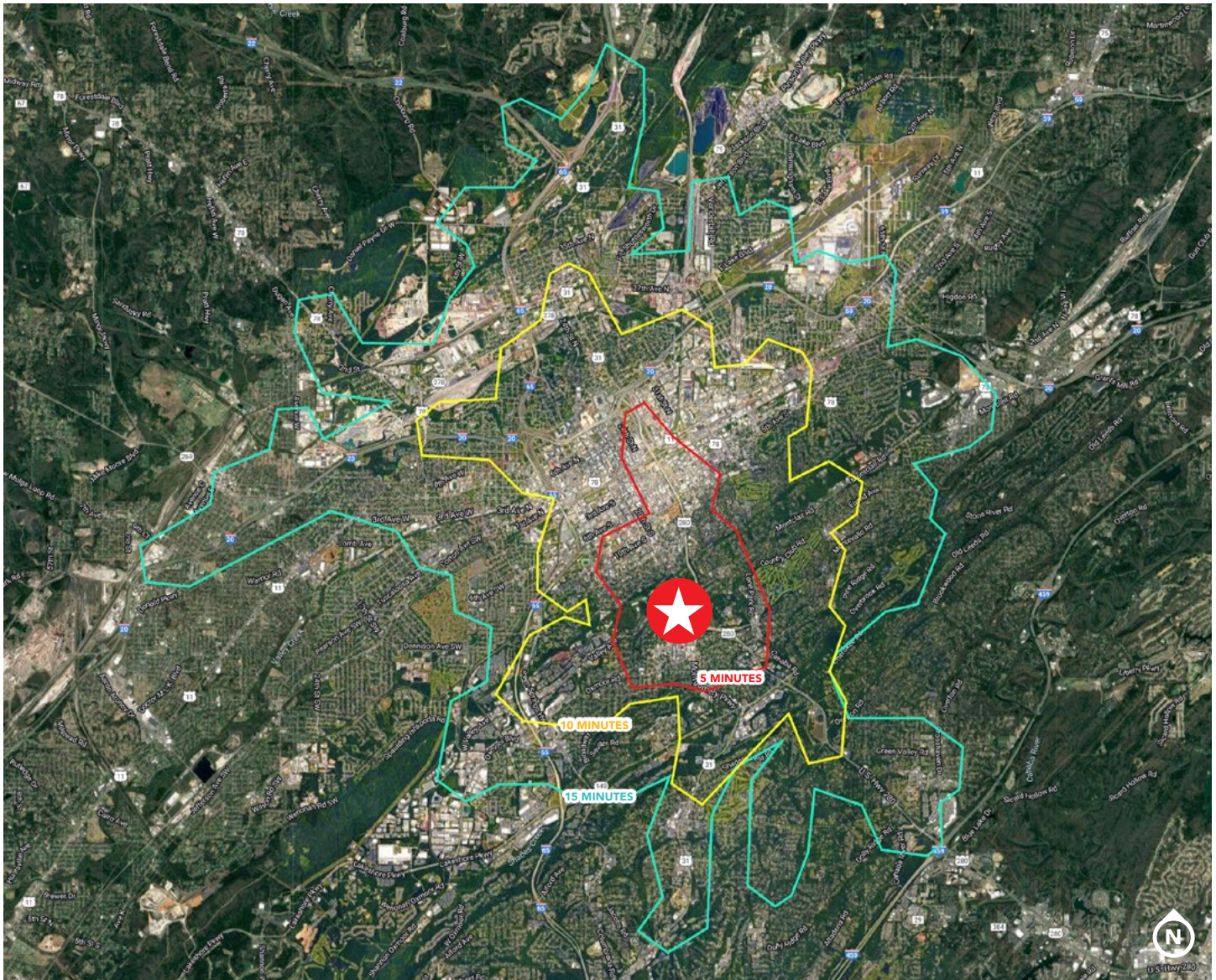
For More Information: [HarbertRealty.com](http://HarbertRealty.com)  
2 North 20th Street, #1700, Birmingham, AL 35203

The information contained herein has been obtained from sources deemed reliable, however, HRS makes no guarantees, warranties or representation as to its completeness or accuracy thereof. The presentation of this property is submitted subject to errors, omissions, change of price or conditions, prior to sale or lease or withdrawal without notice.

# MEDICAL OFFICE SPACE FOR LEASE

2000-2100 SouthBridge Pkwy B'ham, AL 35209

Medical Office space for lease in the Midtown submarket. Convenient access off on Red Mountain Expressway



## 5-15 MINUTE DRIVE TIMES TO ALL MAJOR PARTS OF THE CITY CORE

POPULATION			EMPLOYEES			AVG HH INCOME		
1 Mile	3 Miles	5 Miles	1 Mile	3 Miles	5 Miles	1 Mile	3 Miles	5 Miles
10,727	78,025	178,989	14,058	113,475	172,480	\$179,218	\$142,373	\$125,921



**TANNER SUMNERS**  
tsumners@harbertrealty.com | 205.458.8103

**CHARLIE NORTON**  
cnorton@harbertrealty.com | 205.458.8116

**For More Information: HarbertRealty.com**  
2 North 20th Street, #1700, Birmingham, AL 35203

The information contained herein has been obtained from sources deemed reliable, however, HRS makes no guarantees, warranties or representation as to its completeness or accuracy thereof. The presentation of this property is submitted subject to errors, omissions, change of price or conditions, prior to sale or lease or withdrawal without notice.