

1225 SOUTH MAIN STREET



### Property Description

1.00 acre of commercial land with frontage on Main Street approximately .5 miles south of Main St and Taft Avenue in Sapulpa. This land can accommodate a wide range of uses per the Sapulpa zoning code.

This parcel offers high exposure on a heavily driven thoroughfare.

### Property Highlights

- Approximately 1 acre of commercial land
- Commercial General Zoning
- ±300 feet of frontage on Main Street

### Offering Summary

SALE PRICE:	\$450,000
LOT SIZE:	1 Acres

Demographics	1 Mile	3 Miles	5 Miles
TOTAL HOUSEHOLDS	2,660	7,812	12,656
TOTAL POPULATION	6,775	19,942	32,456
AVERAGE HH INCOME	\$68,626	\$74,079	\$83,358

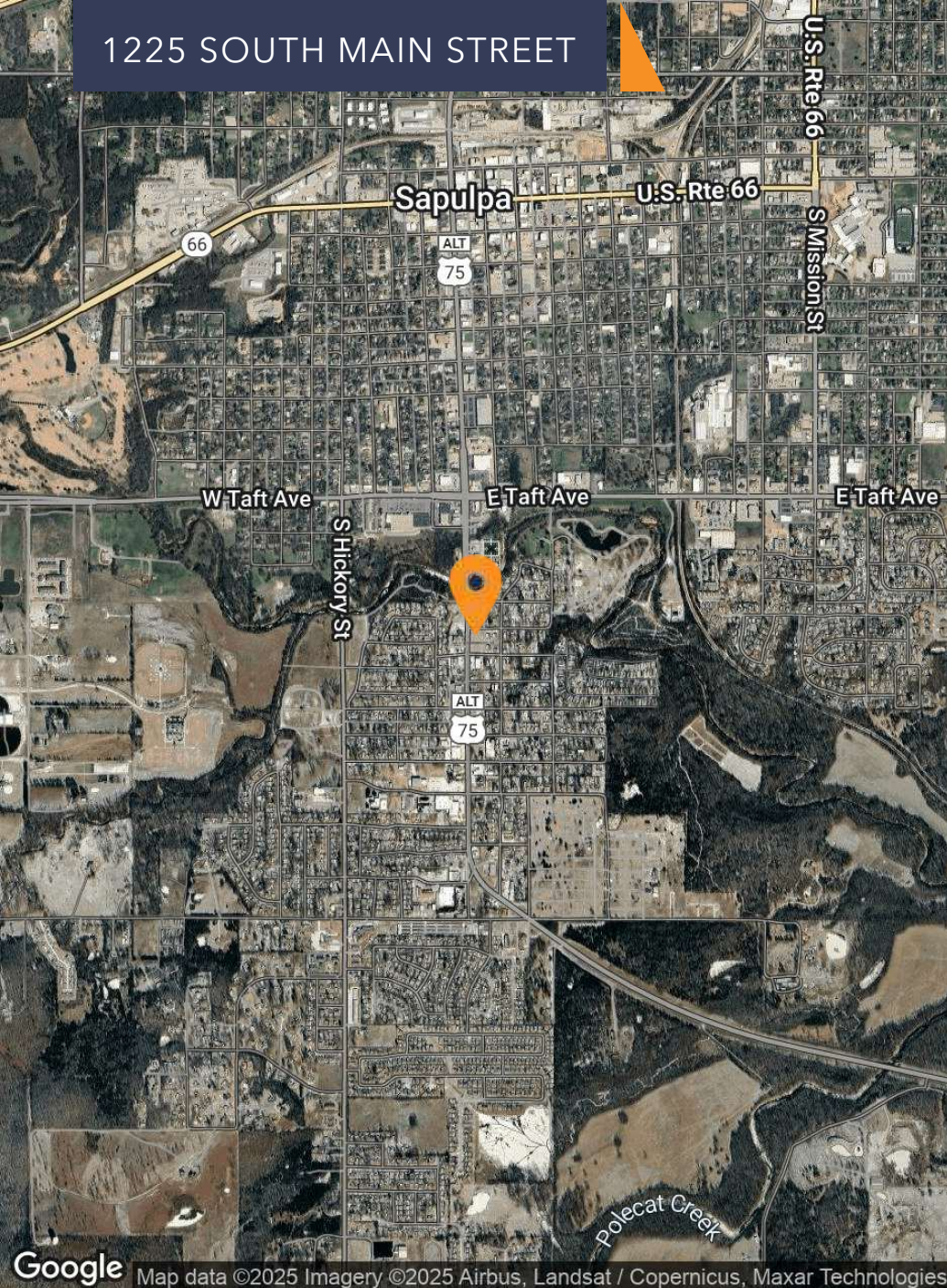
Ben Ganzkow, CCIM  
PRINCIPAL  
918.946.5855  
ben@legacypadvisors.com

Sam Mitchell, CCIM  
SENIOR ASSOCIATE  
817.565.9601  
sam@legacypadvisors.com





1225 SOUTH MAIN STREET



Ben Ganzkow, CCIM

PRINCIPAL

918.946.5855

ben@legacypadvisors.com

Sam Mitchell, CCIM

SENIOR ASSOCIATE

817.565.9601

sam@legacypadvisors.com

 **LEGACY**  
COMMERCIAL PROPERTY ADVISORS

©2025 Legacy Commercial Property Advisors. All rights reserved. This information has been obtained from sources believed reliable, but has not been verified for accuracy or completeness. You should conduct a careful, independent investigation of the property and verify all information. Any reliance on this information is solely at your own risk. Photos herein are the property of their respective owners. Use of these images without the express written consent of the owner are prohibited.