



**MEDICAL OFFICE BUILDING FOR LEASE**

**Malcolm Randolph, SIOR**

Senior Vice President  
+1 804 267 7208  
malcolm.randolph@colliers.com

**John Carpin**

Senior Vice President  
+1 804 267 7216  
john.carpin@colliers.com

**Catherine Walker**

Vice President  
+1 804 968 1978  
catherine.walker@colliers.com

# 6900 Forest Ave, Richmond, VA 23230

## Medical suites available at Reynolds Crossing

- 63,447 RSF, three (3) story medical office building
- Four (4) suites available
  - Suite 100: 3,707 RSF\* (shell condition)
  - Suite 120: 1,504 RSF\*
  - Suite 201: 9,613 RSF - Move-in ready!
  - Suite 310: 7,085 RSF - Move-in ready!
- \*Suites can be combined for 5,211 RSF
- Suites are subdividable
- Located in Reynolds Crossing, Richmond's most desirable medical office location
- Join Bon Secours, Virginia Urology and Virginia Physicians
- Modern Construction - Built in 2012
- 2 elevators (1 gurney)
- I-2 construction class for 1st floor
- On campus security
- 5/1,000 parking
- Upcoming lobby enhancements

**Colliers**

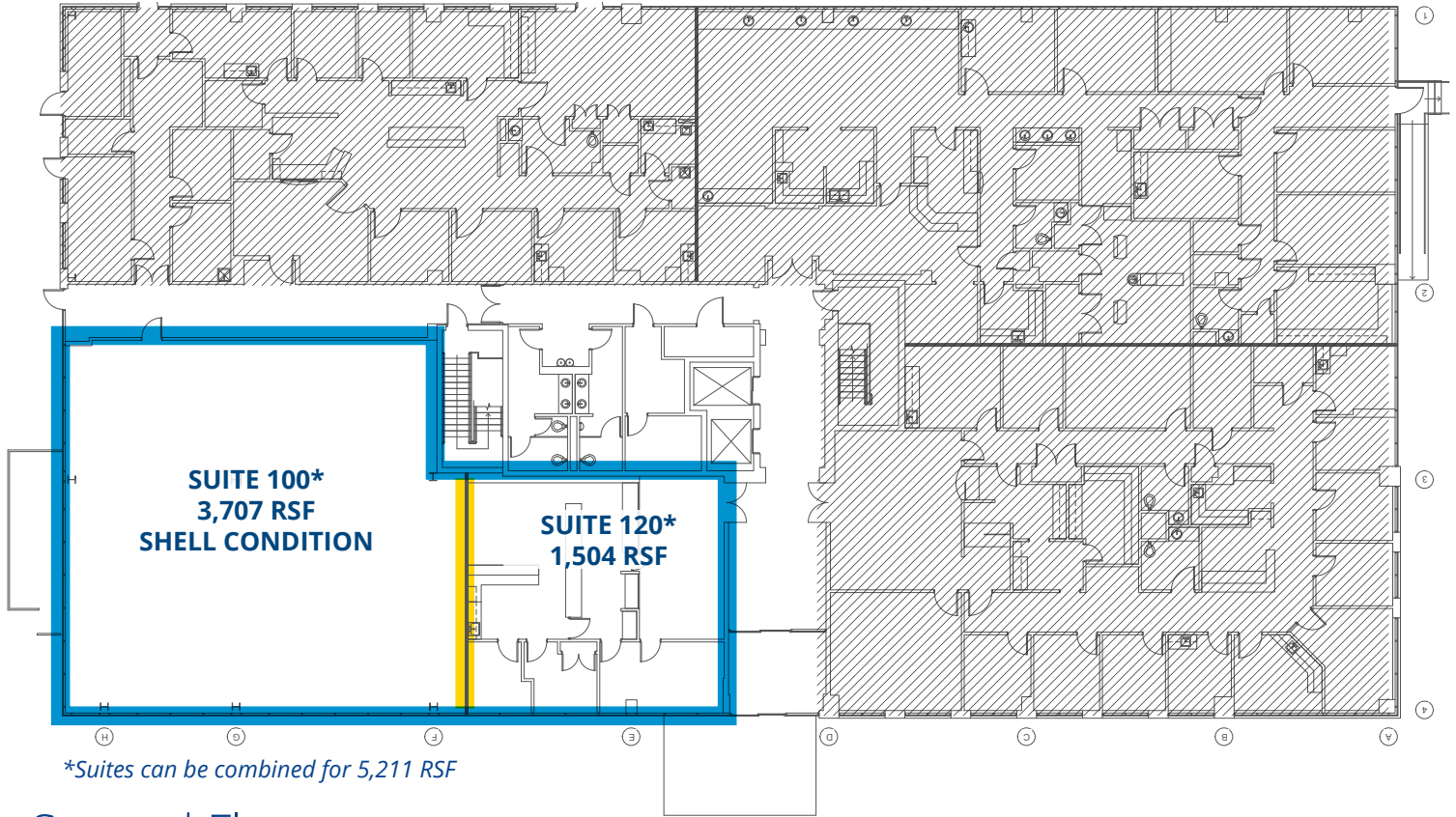
2221 Edward Holland Dr  
Suite 600 | Richmond, VA  
P: +1 804 320 5500  
colliers.com/richmond



## First Floor

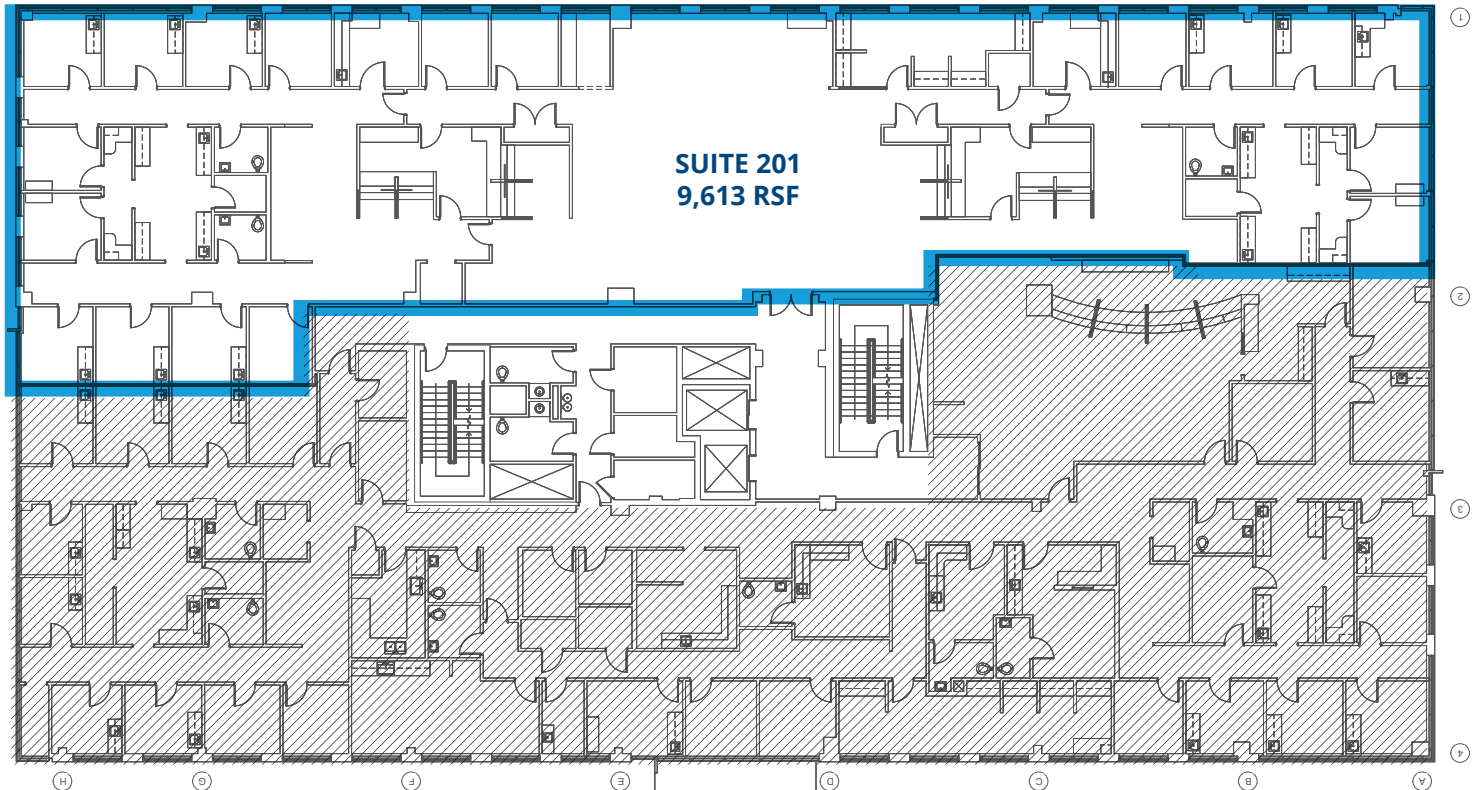
Suite 100: 3,707 RSF\* (shell condition)

Suite 120: 1,504 RSF\*



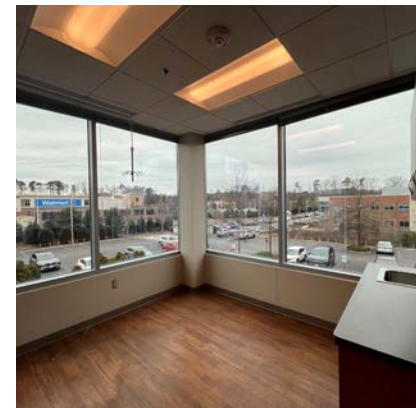
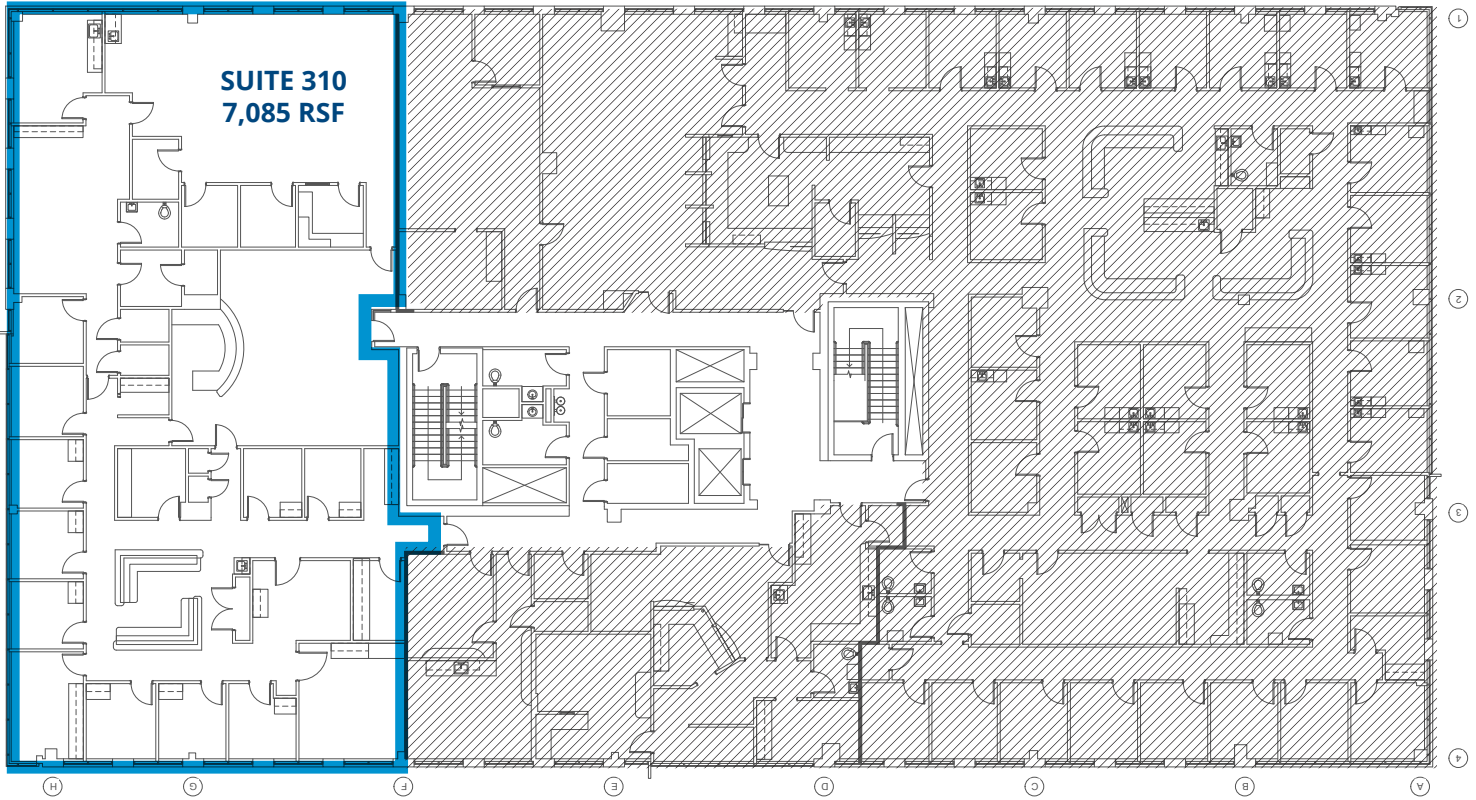
## Second Floor

Suite 201: 9,613 RSF - can be subdivided



# Third Floor

Suite 310 - 7,085 RSF



For Lease | 6900 Forest Avenue



Join Current Tenants:

