

FOR LEASE

6700 PORTWEST DRIVE

Houston, TX 77024

63,986 SF Climate Controlled Warehouse/Office on 4.11 AC



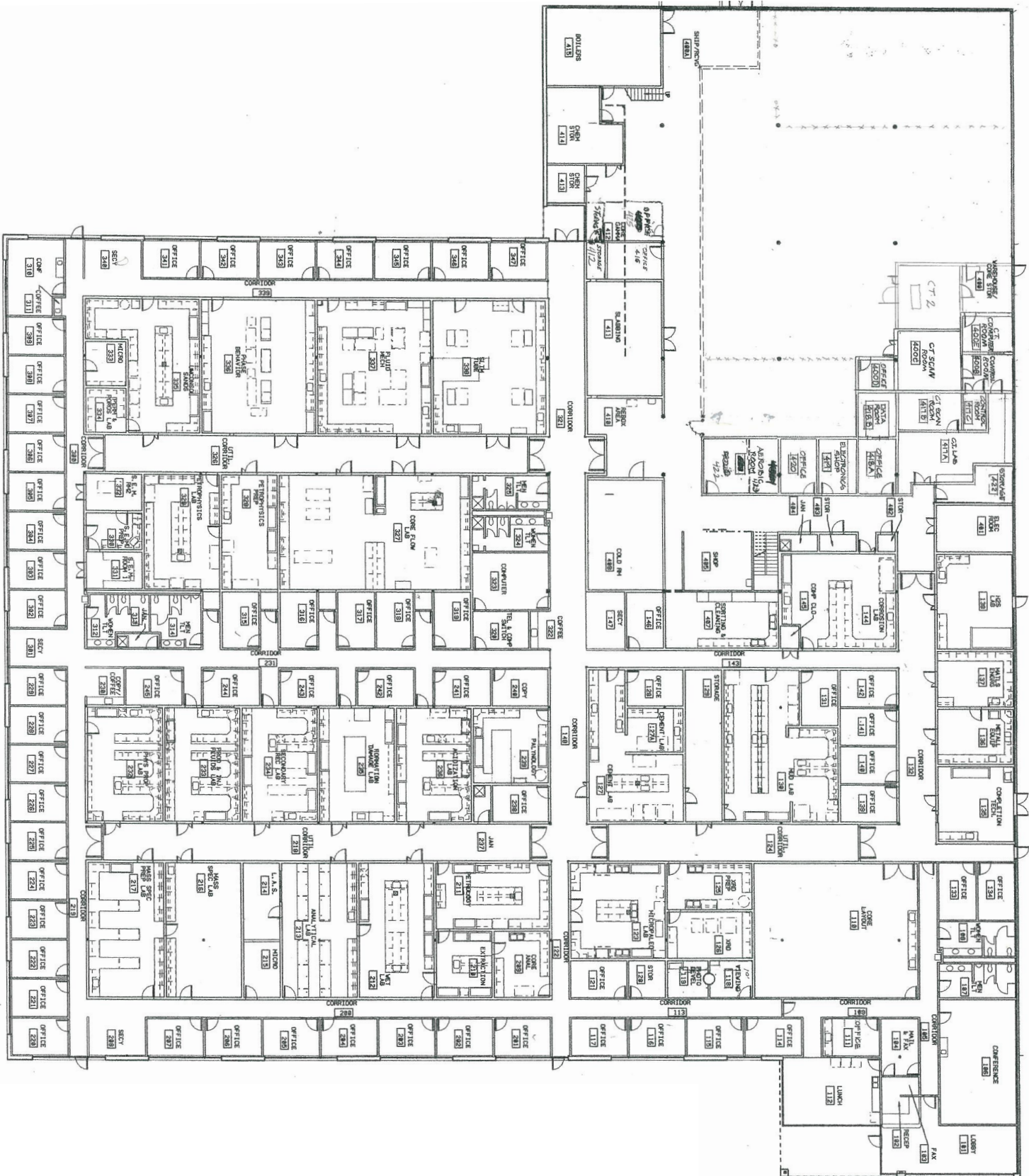
CBRE



6700 PORTWEST DRIVE

PROPERTY HIGHLIGHTS

- 63,986 SF Total
- 18,675 SF Office
- 28,523 SF Lab
- 16,788 SF Warehouse
- Site Size: 4.11 AC
- Secure Loading
- Freestanding and Secured
- Piped for Various Gases
- Loading: Rear Load Configuration
- Bay Depth: 40'
- Sprinkler System: Fully Sprinklered
- HVAC: Fully Climate Controlled
- Power: 3,000 Amp, 480Y/277 Volt, 3 Phase, 4 Wire
- **Lease Rate: Call Broker**



6700 PORTWEST DRIVE

PLEASE CONTACT:

ED FRANTZ

Senior Vice President

+1 713 577 1778

Ed.Frantz@cbre.com

GREG HOLMES

Senior Associate

+1 713 577 1902

Gregory.Holmes@cbre.com

6700 PORTWEST DRIVE, HOUSTON, TX 77024

© 2024 CBRE, Inc. All rights reserved. This information has been obtained from sources believed reliable, but has not been verified for accuracy or completeness. You should conduct a careful, independent investigation of the property and verify all information. Any reliance on this information is solely at your own risk. CBRE and the CBRE logo are service marks of CBRE, Inc. All other marks displayed on this document are the property of their respective owners, and the use of such logos does not imply any affiliation with or endorsement of CBRE. Photos herein are the property of their respective owners. Use of these images without the express written consent of the owner is prohibited.