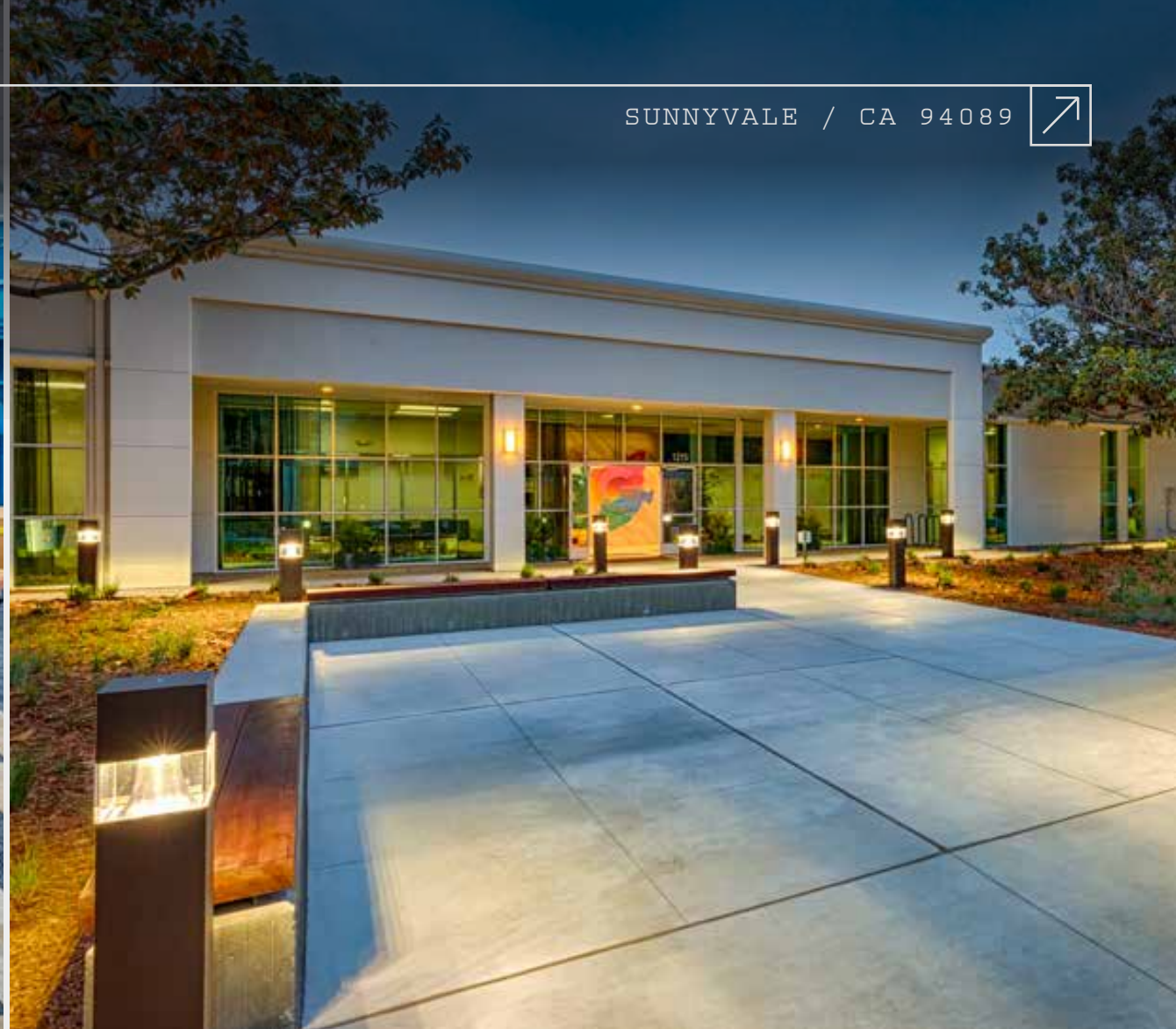


SUNNYVALE / CA 94089



# 1215

BORDEAUX DRIVE



±26,615 SF | **FOR LEASE**

**CBRE**



# Property Highlights



±26,615 SF



Easy access to  
101 and 237 freeways



1,200 Amps  
@277/480V power



12' drop  
ceiling



Excellent  
opportunity for  
auto lab company



Fiber  
connectivity to  
the building



Ability to add  
grade level  
loading



Secure outdoor  
storage areas

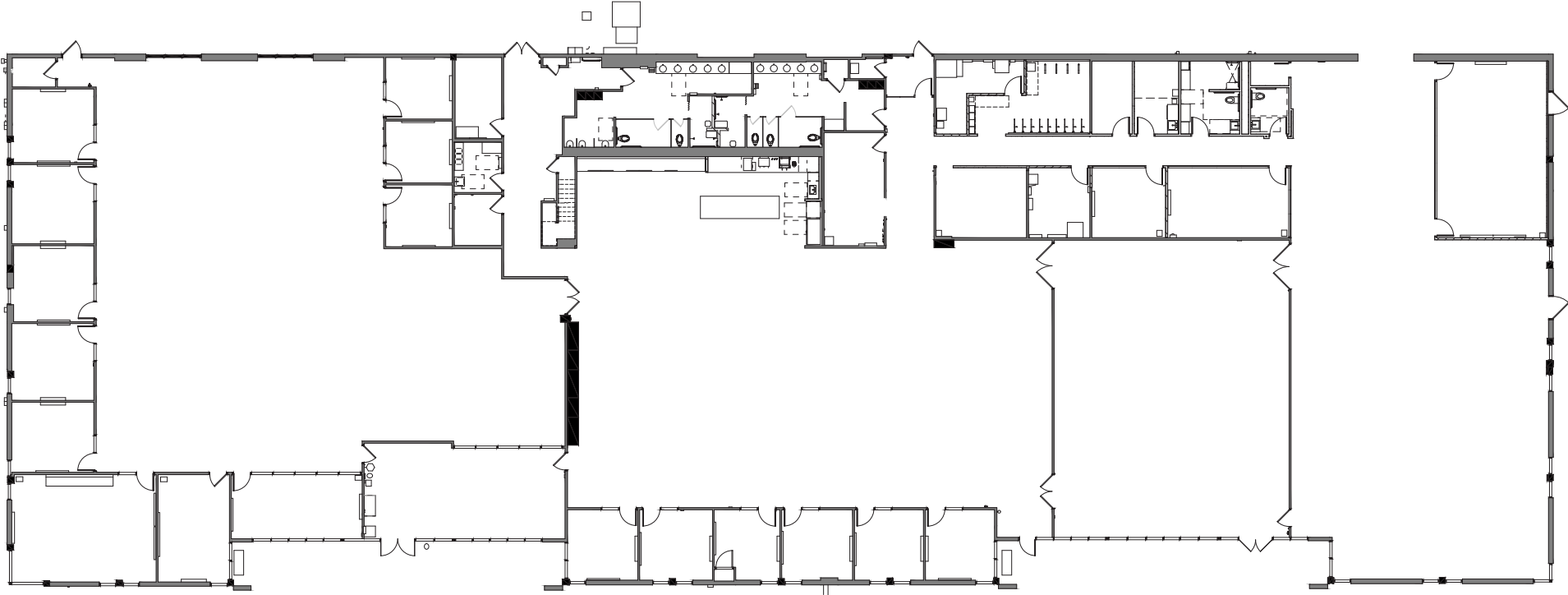


Showers in men's  
and women's  
restrooms



# Floor Plan

NOT TO SCALE

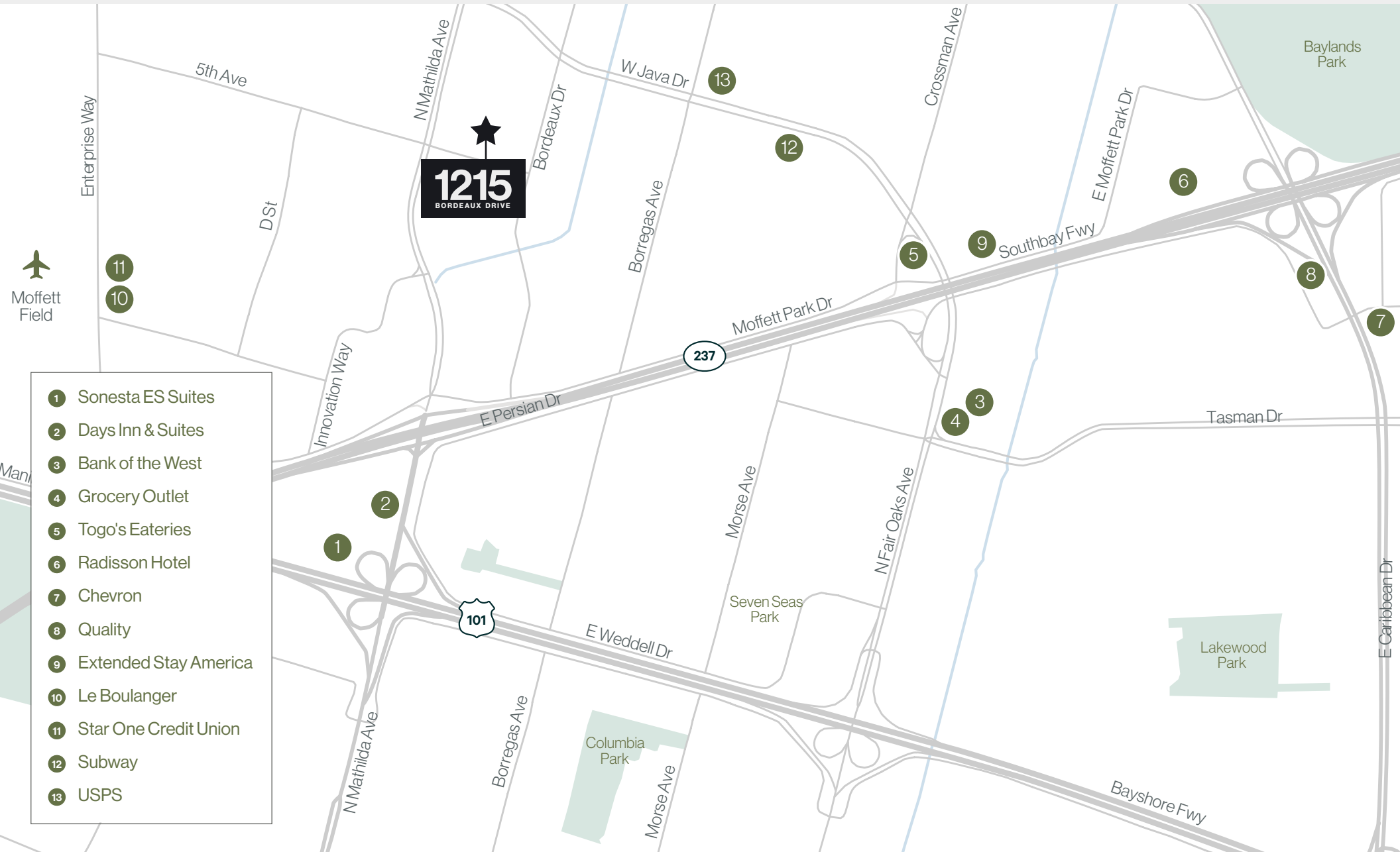


03 | OPEN OFFICE AREAS  
20 | CONFERENCE ROOMS

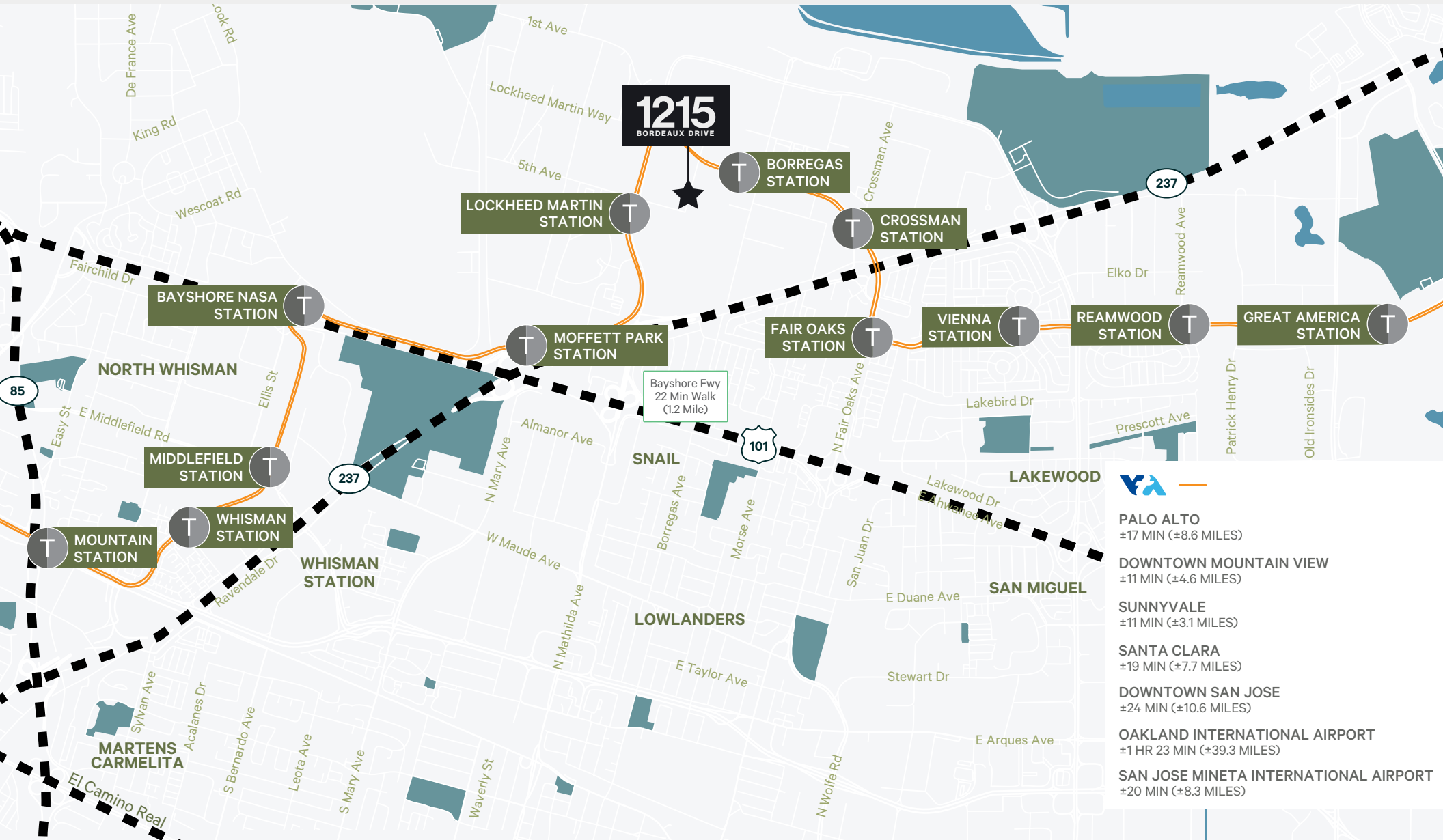
\*\*UNFURNISHED



# Amenities Map



# Transportation Map



Destination	Travel Time	Distance
PALO ALTO	±17 MIN	(±8.6 MILES)
DOWNTOWN MOUNTAIN VIEW	±11 MIN	(±4.6 MILES)
SUNNYVALE	±11 MIN	(±3.1 MILES)
SANTA CLARA	±19 MIN	(±7.7 MILES)
DOWNTOWN SAN JOSE	±24 MIN	(±10.6 MILES)
OAKLAND INTERNATIONAL AIRPORT	±1 HR 23 MIN	(±39.3 MILES)
SAN JOSE MINETA INTERNATIONAL AIRPORT	±20 MIN	(±8.3 MILES)





SUNNYVALE / CA 94089



# 1215

## BORDEAUX DRIVE

**Chris Shepherd**  
CBRE

+1 408 453 7455  
chris.shepherd@cbre.com  
Lic. 01707888

**Todd Husak**  
JLL

+1 650 315 7865  
todd.husak@jll.com  
Lic. 01785130



© 2024 CBRE, Inc. All rights reserved. This information has been obtained from sources believed reliable but has not been verified for accuracy or completeness. CBRE, Inc. makes no guarantee, representation or warranty and accepts no responsibility or liability as to the accuracy, completeness, or reliability of the information contained herein. You should conduct a careful, independent investigation of the property and verify all information. Any reliance on this information is solely at your own risk. CBRE and the CBRE logo are service marks of CBRE, Inc. All other marks displayed on this document are the property of their respective owners, and the use of such marks does not imply any affiliation with or endorsement of CBRE. Photos herein are the property of their respective owners. Use of these images without the express written consent of the owner is prohibited.