

**For Lease | Up to 5 year term | 6,768 SQ FT**

6,768 total sq. ft., divisible into 3,067 sq. ft. and 1,227 sq. ft., plus a 2,474 sq. ft. common area.  
16 parking spaces (2.36/1,000 SF) with ample off-site parking available.

**3001 E Street  
431 30th Street  
Sacramento**



Exclusively Listed by  
**Daniel Ramsey**  
**Ramsey Real Estate & Development Corporation**  
felicia.p@myoutdesk.com | 916.520.8644

**Available mid Q2 2025**  
Price negotiable



FOR LEASE | 3001 E Street Sacramento, CA 95816 | 431 30th Street Sacramento, CA 95816 | 6,768 sq ft divisible | Up to 5yr term

## Property Features



This premier office space is strategically located at the corner of E Street and 30th Street, offering a combination of accessibility, functionality, and modern workplace design. It is a blend of both **private office** and **open floor plan** for collaboration and flexibility. The space is enhanced by:

**18 Private Offices** | Ideal for executives, managers, or teams requiring dedicated workspaces.

**1 Conference Room** | A professional meeting space designed for strategic discussions, client meetings, and team collaboration.

**1 Podcast Recording & Video Studio** | A cutting-edge feature that allows businesses to expand their social media presence, create high-quality content, and engage audiences effectively.

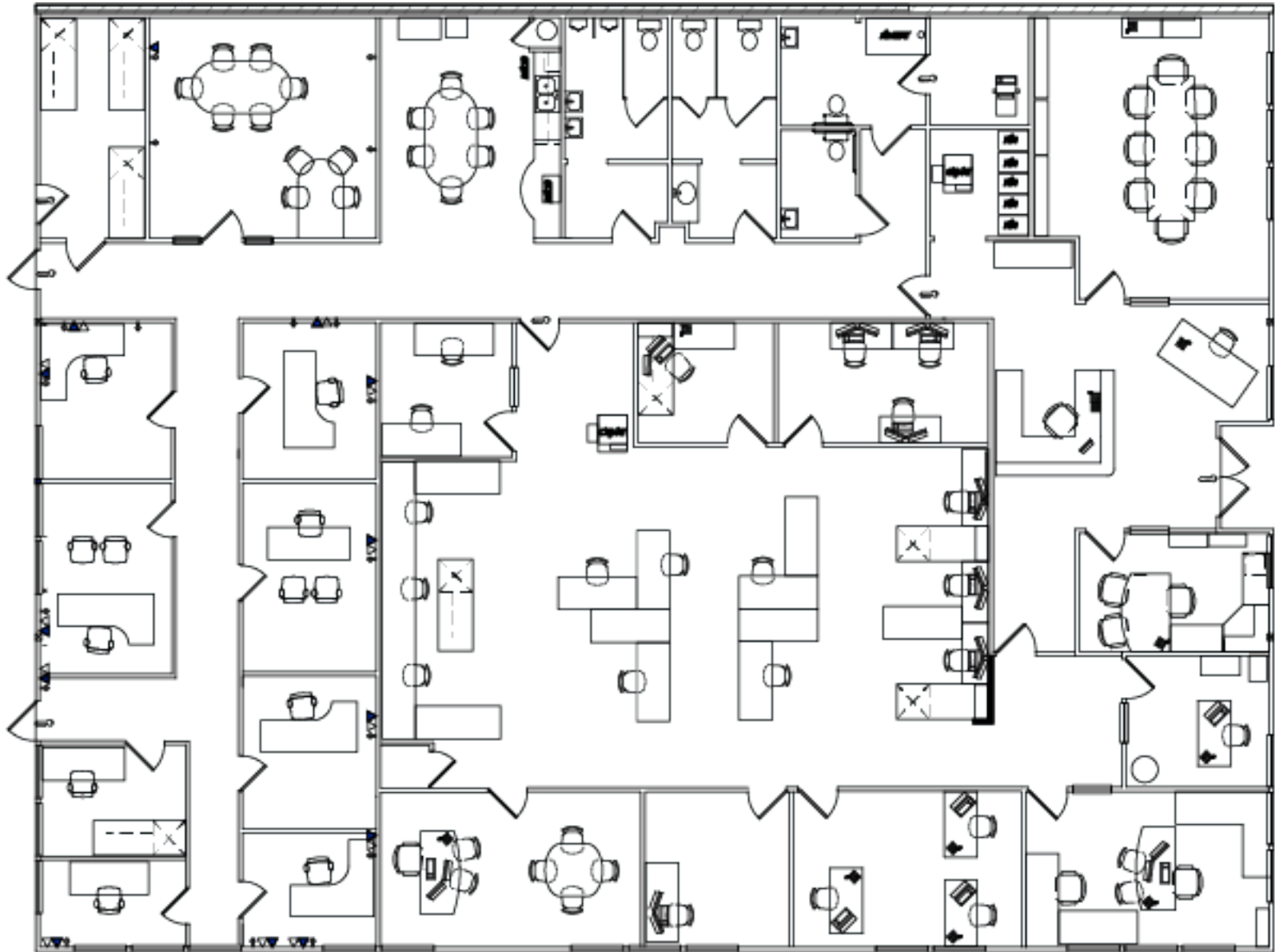
This office space offers the perfect blend of modern business functionality, **prime location**, and a work-friendly environment, making it an outstanding choice for companies looking to establish a strong presence in Sacramento.

Exclusively Listed by **Daniel Ramsey**  
**Ramsey Real Estate & Development Corporation**  
felicia.p@myoutdesk.com | 916.520.8644

Available mid Q2 2025  
Price negotiable

FOR LEASE | 3001 E Street Sacramento, CA 95816 | 431 30th Street Sacramento, CA 95816 | 6,768 sq ft divisible | Up to 5yr term

## Full Building Floor Plan



Exclusively Listed by **Daniel Ramsey**  
**Ramsey Real Estate & Development Corporation**  
felicia.p@myoutdesk.com | 916.520.8644

Available mid Q2 2025  
Price negotiable

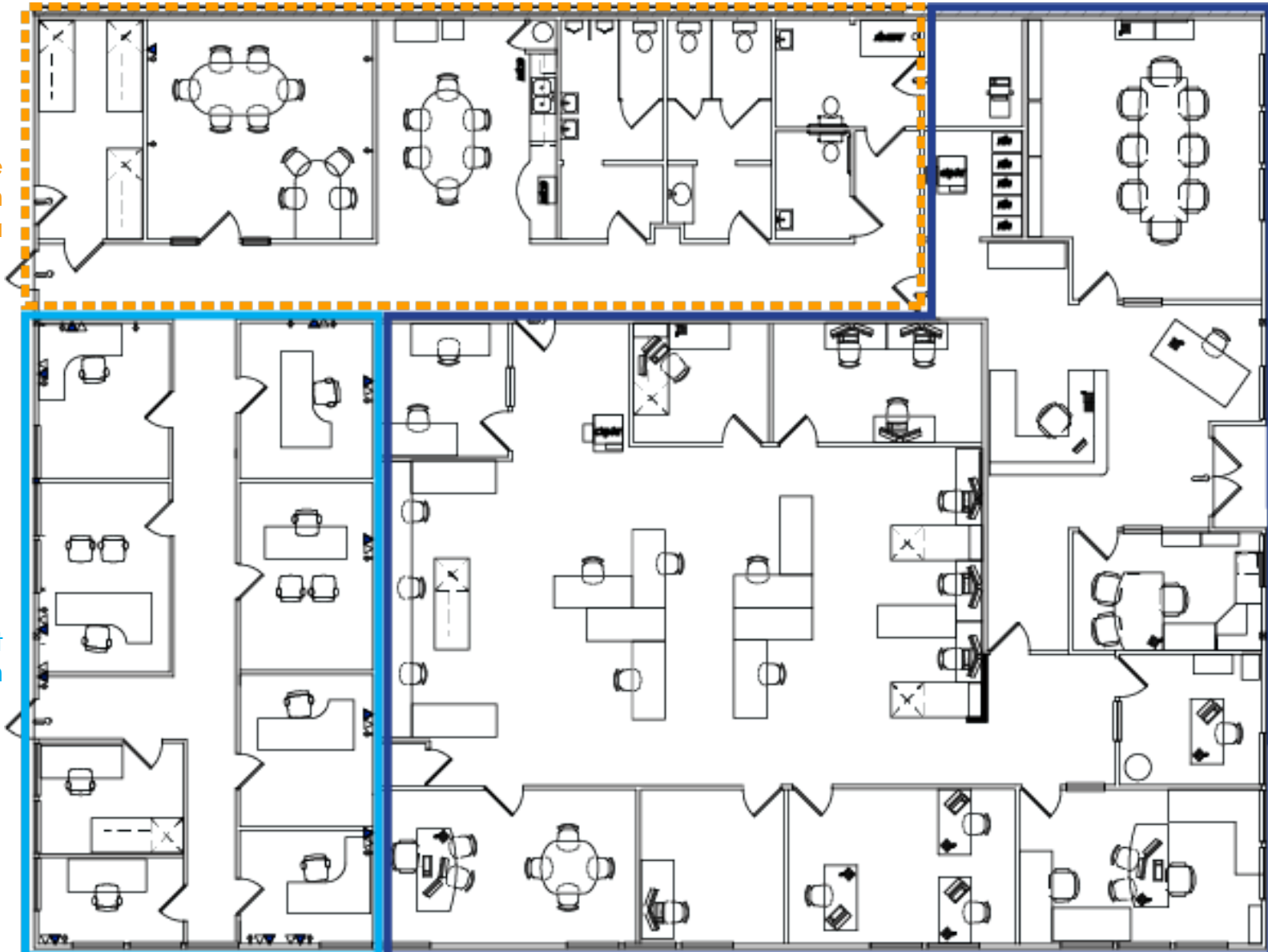


FOR LEASE | 3001 E Street Sacramento, CA 95816 | 431 30th Street Sacramento, CA 95816 | 6,768 sq ft divisible | Up to 5yr term

## Divisible Floor Plan

Accessible  
Common  
Area

431 30th Street  
Floor Plan



3001 E Street  
Floor Plan

Exclusively Listed by **Daniel Ramsey**  
**Ramsey Real Estate & Development Corporation**  
felicia.p@myoutdesk.com | 916.520.8644

Available mid Q2 2025  
Price negotiable



FOR LEASE | 3001 E Street Sacramento, CA 95816 | 431 30th Street Sacramento, CA 95816 | 6,768 sq ft divisible | Up to 5yr term

## Property Features & Suite Photos



### Prime Location & Accessibility

Conveniently located near major highways, ensuring seamless connectivity for commuters and clients. A rare benefit in urban office settings, making it easy for employees and visitors to park stress-free.

### Exceptional Work Environment

Just a short stroll away to McKinley Park, one of Sacramento's most tranquil and beloved parks, offering a perfect retreat for lunch breaks or outdoor meetings.

Large windows throughout the space create a bright, abundant natural light and energizing work atmosphere.



Exclusively Listed by **Daniel Ramsey**  
**Ramsey Real Estate & Development Corporation**  
felicia.p@myoutdesk.com | 916.520.8644

Available mid Q2 2025  
Price negotiable



FOR LEASE | 3001 E Street Sacramento, CA 95816 | 431 30th Street Sacramento, CA 95816 | 6,768 sq ft divisible | Up to 5yr term

## Suite Photos



Exclusively Listed by **Daniel Ramsey**  
**Ramsey Real Estate & Development Corporation**  
felicia.p@myoutdesk.com | 916.520.8644

Available mid Q2 2025  
Price negotiable



FOR LEASE | 3001 E Street Sacramento, CA 95816 | 431 30th Street Sacramento, CA 95816 | 6,768 sq ft divisible | Up to 5yr term

## Ariel View of Location



Exclusively Listed by **Daniel Ramsey**  
**Ramsey Real Estate & Development Corporation**  
felicia.p@myoutdesk.com | 916.520.8644

Available mid Q2 2025  
Price negotiable