

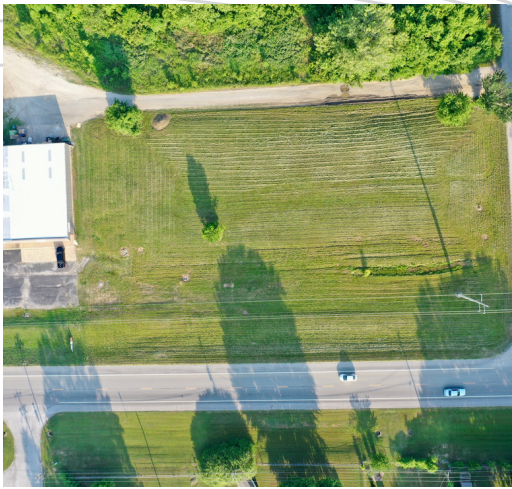


PIPER MANAGEMENT



GATEWAY PLAZA

2251 N HIGHWAY 88
Claremore, OK



Hwy 88 Frontage



Completion Q4 of 2024



1/2 Mile from RSU College

OFFERED AT \$2,400 PER UNIT

EXECUTIVE SUMMARY

- Excellent retail location
- Building Size: 12,000 Sqft
- Strong surrounding residential
- 1/2 form RSU College
- Hwy 88 Frontage
- Perfect for a QSR
- Will Build to suit
- Deposit \$1,500
- Dividing walls are not structural



Levi J. Green

☎ 918-519-3949

✉ Levi@PiperOk.com

GATEWAY PLAZA

2251 N HIGHWAY 88
Claremore, OK



PIPER MANAGEMENT

