

2650 N. OPDYKE ROAD  
AUBURN HILLS, MICHIGAN

INDUSTRIAL FOR SUBLEASE  
86,432 Square Feet Available



**SIGNATURE  
ASSOCIATES**  
KNOW SIGNATURE | KNOW RESULTS

## GATEWAY CORPORATE PARK



### PROPERTY FEATURES

- 86,432 square feet available
- 39,667 square feet office
- 24' clear height
- (4) grade level doors, (1) truckwell
- Zoned I-1
- 2000 amps, 277/480 volts, 3-phase, heavy power
- Excellent corporate headquarters, R&D or engineering building
- Phenomenal I-75 exposure
- Sublease thru 4/30/2030
- Lease Rate: \$9.75/sq. ft. NNN



For more information, please contact:

**GARY STEPHENS**  
(248) 948 0104  
gstephens@signatureassociates.com

**SIGNATURE ASSOCIATES**  
One Towne Square, Suite 1200  
Southfield, MI 48076  
www.signatureassociates.com



# 2650 N. Opdyke Road – Auburn Hills, MI

## Industrial For Sublease

86,432  
Square Feet  
AVAILABLE

### Building Location



For more information, please contact:

**GARY STEPHENS**  
(248) 948 0104  
[gstephens@signatureassociates.com](mailto:gstephens@signatureassociates.com)

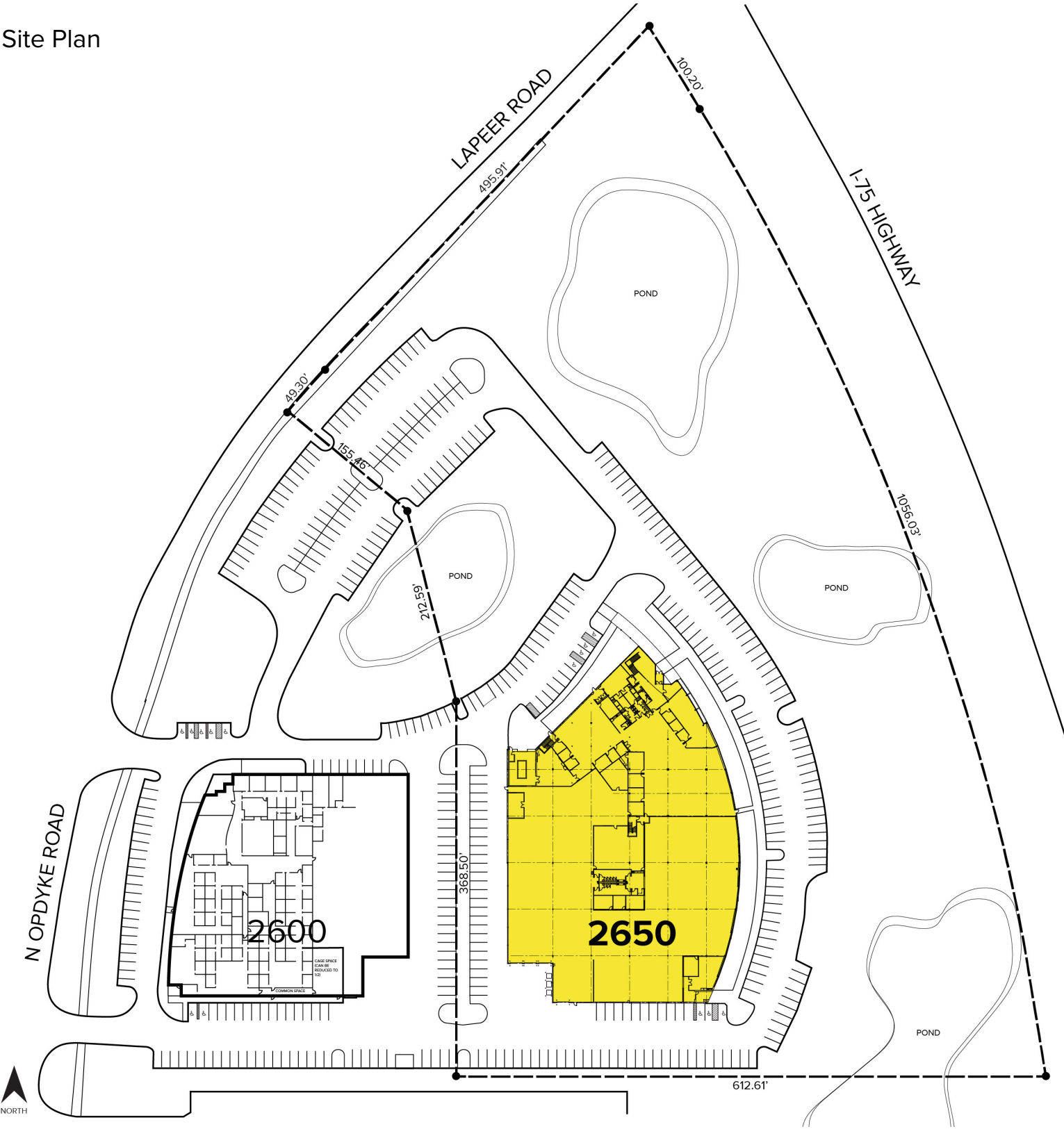
**SIGNATURE ASSOCIATES**  
One Towne Square, Suite 1200  
Southfield, MI 48076  
[www.signatureassociates.com](http://www.signatureassociates.com)

Information is subject to verification and no liability for errors or omissions is assumed. Price is subject to change and listing withdrawal.

2650 N. Opdyke Road – Auburn Hills, MI  
Industrial For Sublease

86,432  
Square Feet  
AVAILABLE

Site Plan



For more information, please contact:  
**GARY STEPHENS**  
(248) 948 0104  
gstephens@signatureassociates.com

**SIGNATURE ASSOCIATES**  
One Towne Square, Suite 1200  
Southfield, MI 48076  
www.signatureassociates.com

Information is subject to verification and no liability for errors or omissions is assumed. Price is subject to change and listing withdrawal.

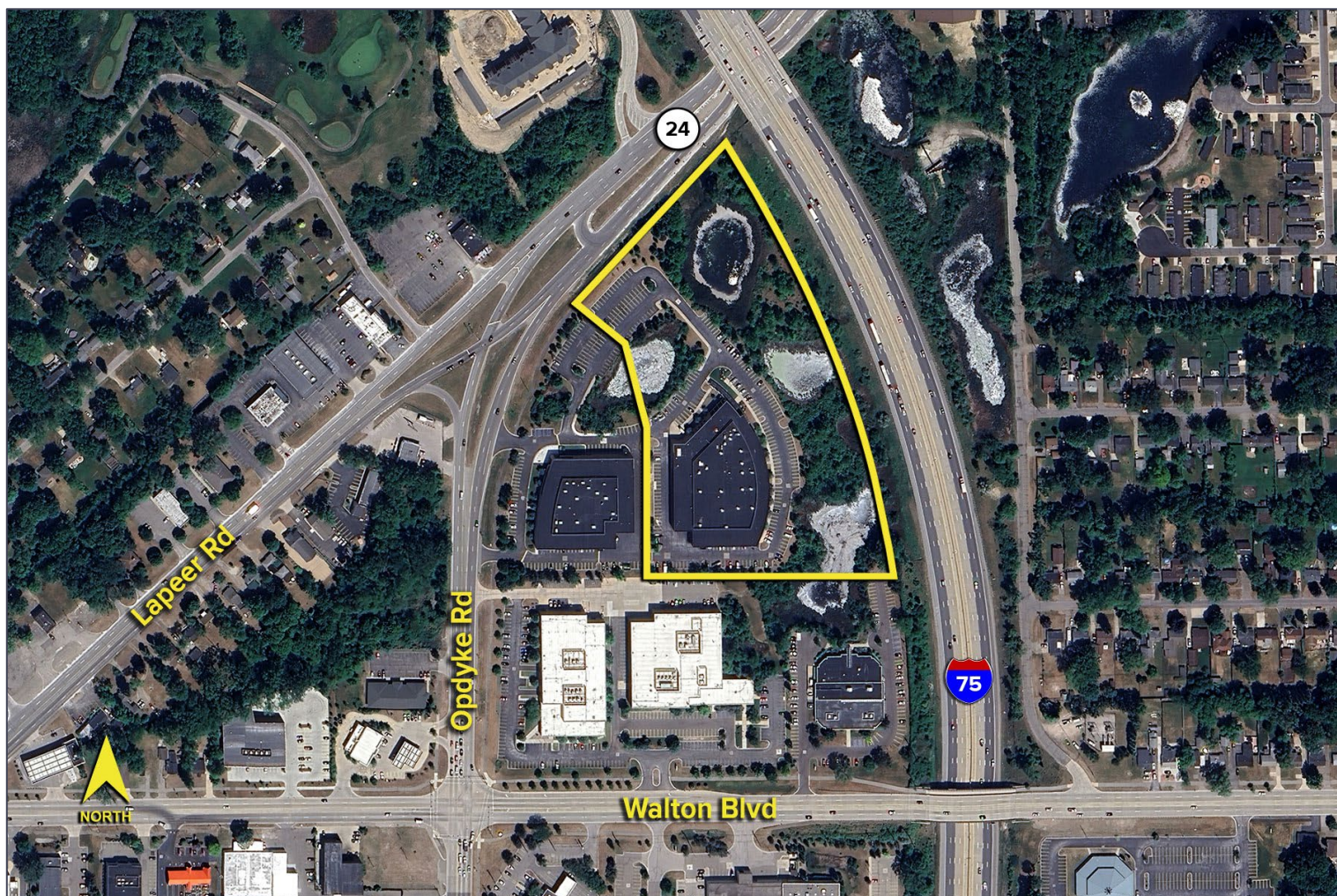


# 2650 N. Opdyke Road – Auburn Hills, MI

## Industrial For Sublease

86,432  
Square Feet  
AVAILABLE

Aerial



For more information, please contact:

**GARY STEPHENS**  
(248) 948 0104  
[gstephens@signatureassociates.com](mailto:gstephens@signatureassociates.com)

**SIGNATURE ASSOCIATES**  
One Towne Square, Suite 1200  
Southfield, MI 48076  
[www.signatureassociates.com](http://www.signatureassociates.com)

Information is subject to verification and no liability for errors or omissions is assumed. Price is subject to change and listing withdrawal.