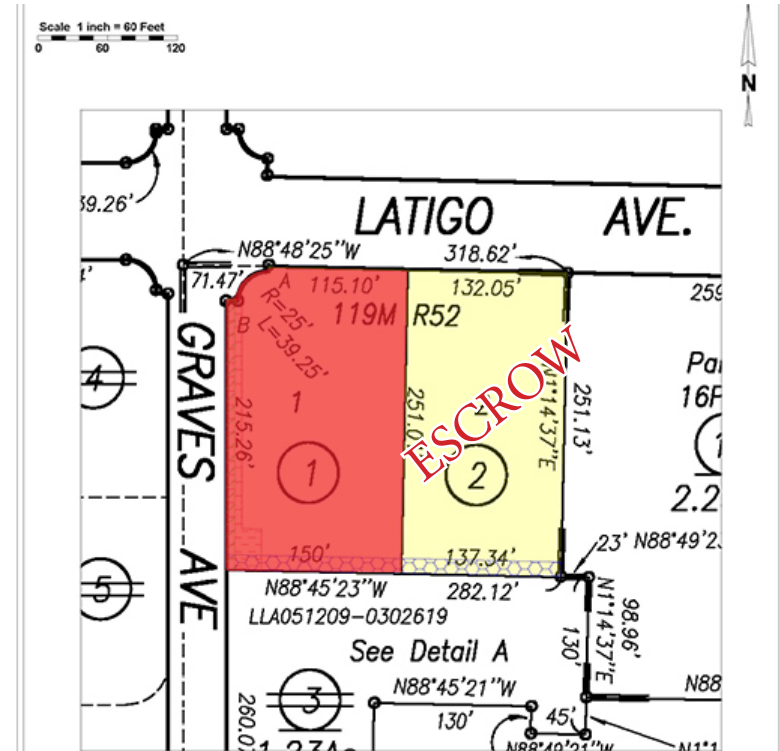


# FOR SALE FINAL LOT | +/-0.85 AC

# \$995,000



Level Industrial lot with utilities at curb. Rare industrial infill opportunity in Oxnard. Close to Highway 101. Last lot available.

Corner Latigo Ave & Graves Ave | Oxnard, CA

Jerry Schmidt  
805.928.2800 ext. 107  
Jerry@PacificaCRE.com  
Lic #0095042

Pat Palangi  
805.928.2800 ext. 105  
Pat@PacificaCRE.com  
Lic #01105680

Mike Kelly  
805.928.2800 ext. 113  
Mike@PacificaCRE.com  
Lic #01800988



2520 Professional Parkway | Santa Maria, CA 93455 | PacificaCommercialRealty.com

Information contained herein has been obtained from the owner of the property or from other sources deemed reliable. We have no reason to doubt its accuracy, but we do not guarantee it.