

700 Comanche Road Albuquerque, NM

Prime North I-25 Warehouse/Office Sublease



+/- 27,000 SF | Available Now

700 Comanche Road Albuquerque, NM



Floors	1
Size	+/- 27,000 SF
Rental Rate	\$11.75/SF
Availability	Immediate
Term	Through September 2028
Type	Warehouse/Office
Submarket	North 1-25
Built (Bldg)	1977
Parking	Secured Paved Lot (1 Acre)

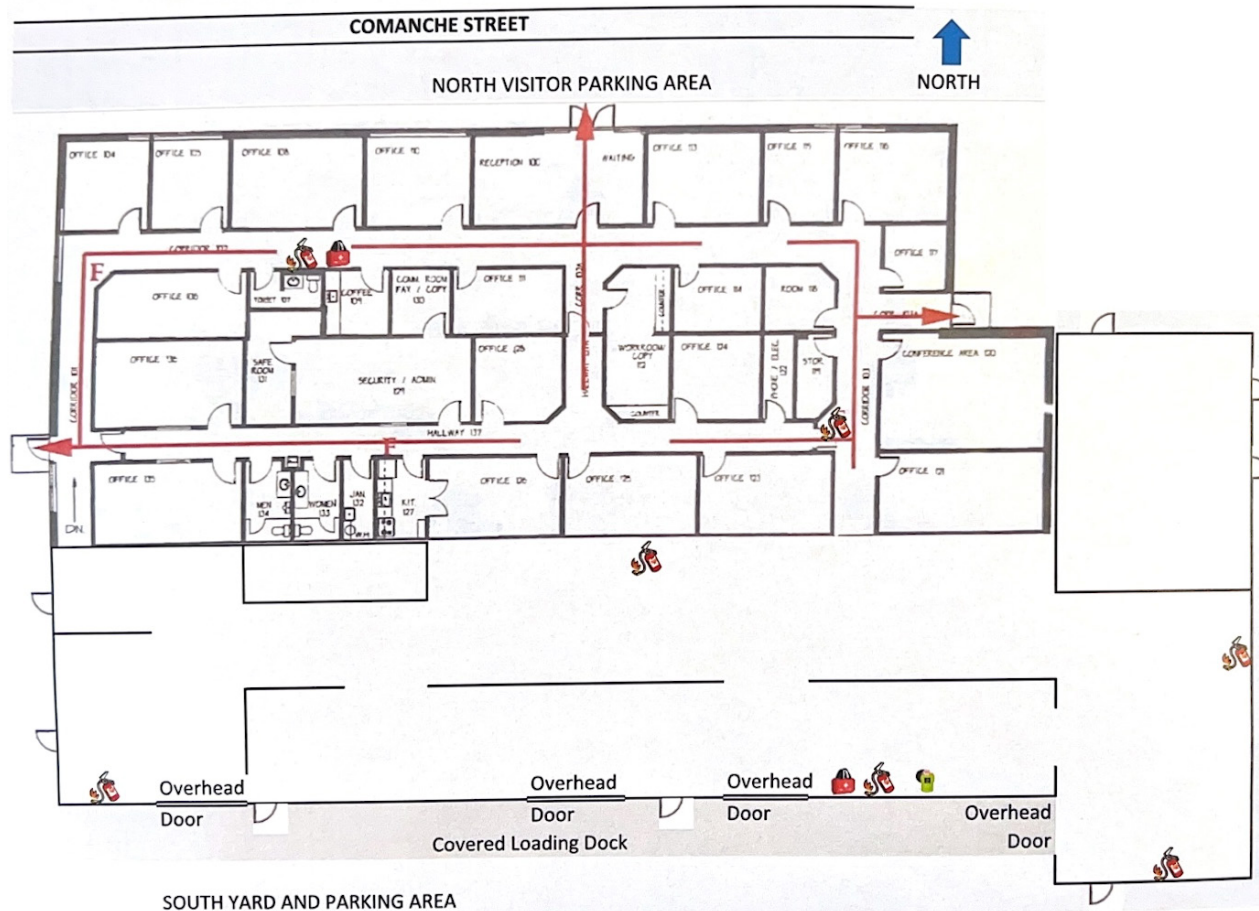


KEY HIGHLIGHTS

- Proximate to Comanche/ I-25 Interchange
- Three (3) full access points along Comanche Road
- Four (4) docks on the south side of the property
- Non-Residential/Light Manufacturing (NR-LM) zoning allows for a variety of uses including:
 - Conventional Office/Warehouse
 - Showroom/Warehouse
 - Distribution
 - Manufacturing w/ Contractor Yard
- Per NMDOT, Comanche Bridge construction to be completed by February 2026
- 3 Phase 600 AMP electrical service

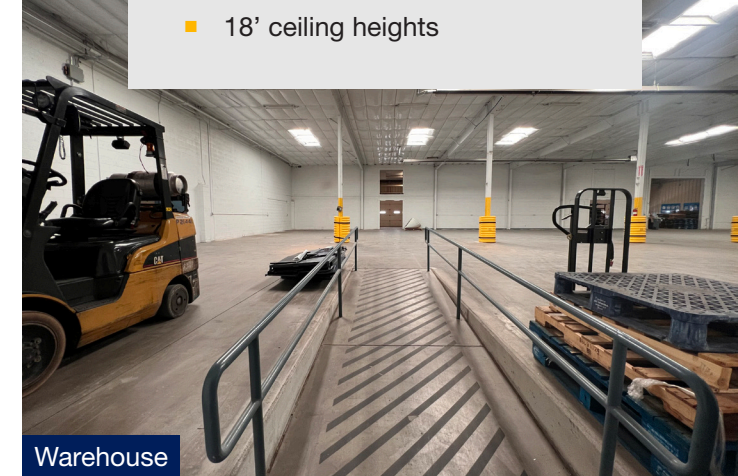
700 Comanche Road Albuquerque, NM

FLOOR 1
27,000 SF



SPACE DETAILS

- ~20,000 SF warehouse
- ~7,000 SF office
- 18' ceiling heights

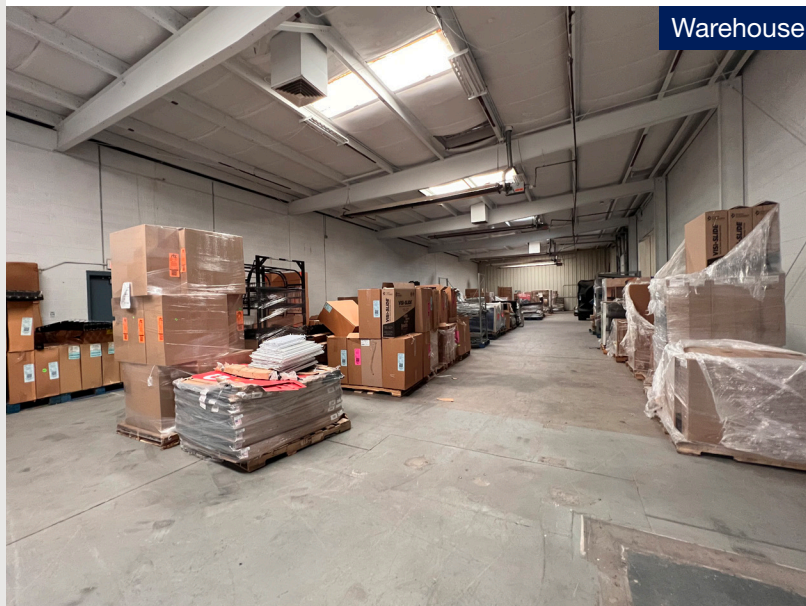
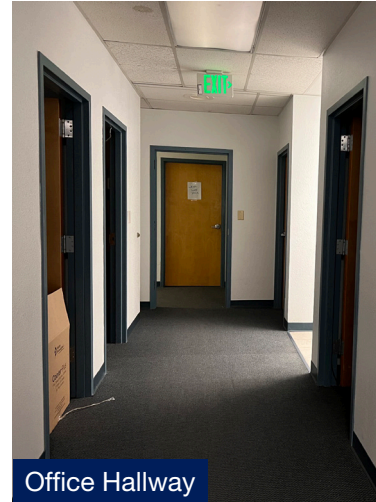


Warehouse



Warehouse

700 Comanche Road Albuquerque, NM



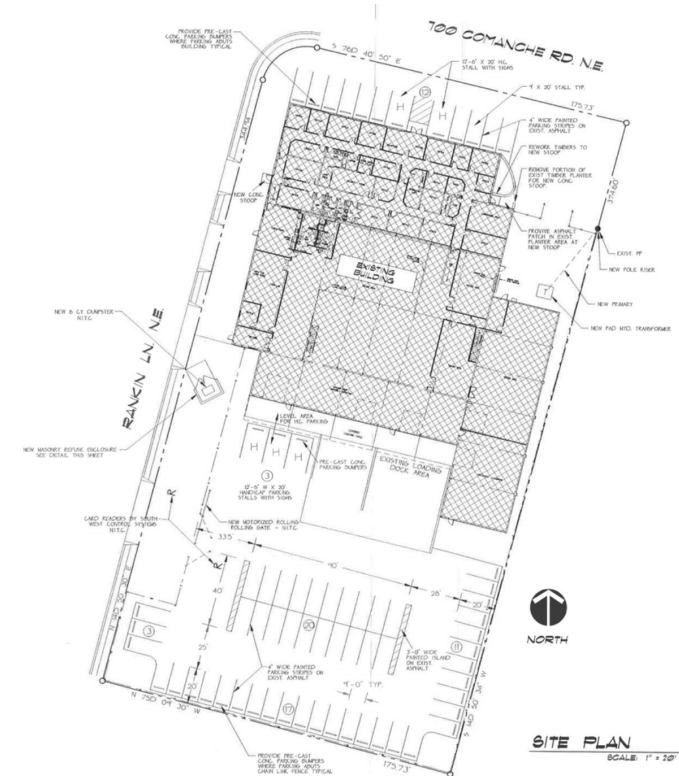
Even though obtained from sources deemed reliable, no warranty or representation, express or implied, is made as to the accuracy of the information herein, and it is subject to errors, omissions, change of price, rental or other conditions, withdrawal without notice, and to any special listing conditions imposed by our principals.

700 Comanche Road Albuquerque, NM



NOTABLE NEIGHBORS

THE SITE



700 Comanche Road Albuquerque, NM

Prime North I-25 Warehouse/Office

For More Information, Contact:

Edwards Commercial Realty, LLC

Executive West Bldg. 2929 Coors Blvd. NW Ste. #202
Albuquerque, NM 87120

Mark Edwards

Mark.Edwards@EdwardsCommercialRealty.com
505.998.7298 main
505.350.8211 mobile

Mariah Edwards

Mariah.Edwards@EdwardsCommercialRealty.com
505.998.7298 main
505.228.2258 mobile

