

Guilford Business Park - Industrial, Retail, & Office Space

1 - 12 Wendy Court | Greensboro, NC 27409



- ◆ Available For Lease
- ◆ From 1,566 SF - 11,000 SF
- ◆ HVAC in Warehouse
- ◆ Ceiling Heights: 10' - 16'
- ◆ Drive-in & Dock High Doors
- ◆ Three Phase Power

Office and industrial space conveniently located in Guilford Business Park at the corner of West Market Street and Guilford College Road with quick access to Interstate 40.

Ready to occupy with a mix of flexible floor plans. Plenty of offices with windows, 200 amp/208V three phase power in all units with potential for 460V, and plenty of parking.



JJ Joubran, CCIM

(336) 270-9775

JJ@JoubranCommercial.com

Guilford Business Park - Industrial, Retail, & Office Space

1 - 12 Wendy Court | Greensboro, NC 27409



JJ Joubran, CCIM

(336) 270-9775

JJ@JoubranCommercial.com

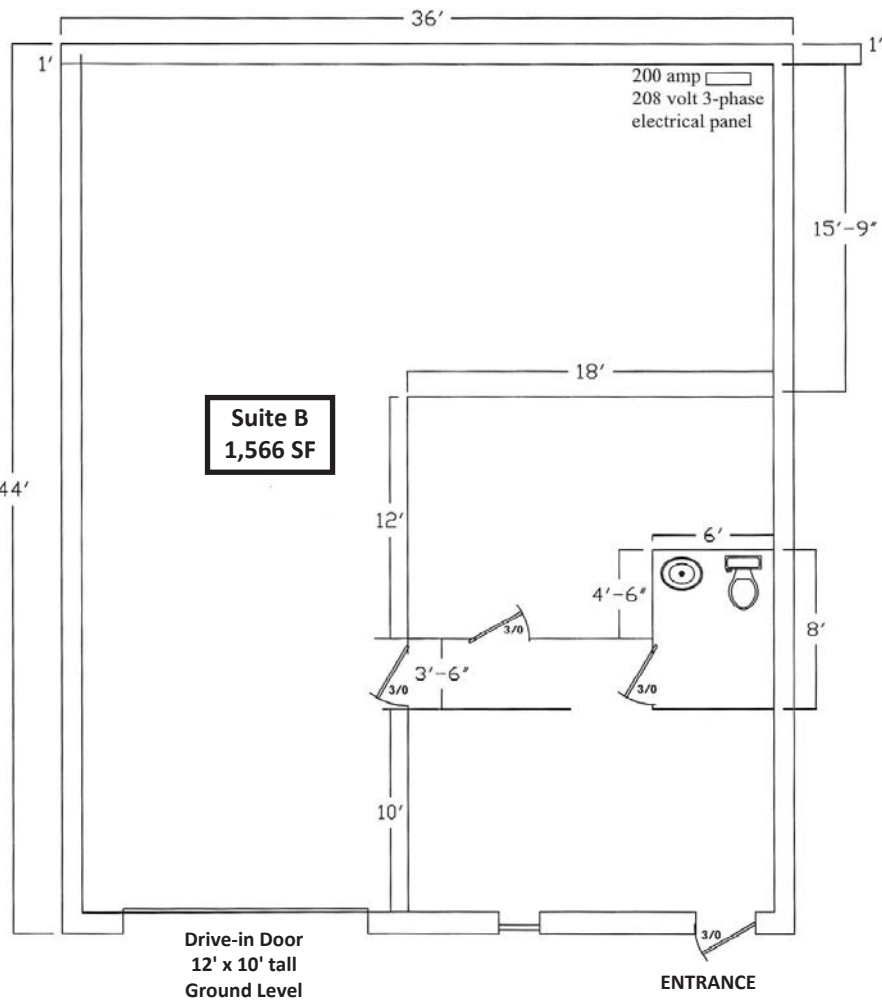


Guilford Business Park

1 Wendy Court | Greensboro, NC 27409

1-B Wendy Court

- ❖ Size: 1,566 SF ±
- ❖ Warehouse Space: 1,076 SF
- ❖ Office Space: 490 SF
- ❖ Clear Height: 12'
- ❖ Dock High Doors: 0
- ❖ Drive-In Doors: 1 (12' wide x 10' tall)
- ❖ Power: 3 Phase, 200 amp, 208 Volt



JJ Joubran, CCIM

(336) 270-9775

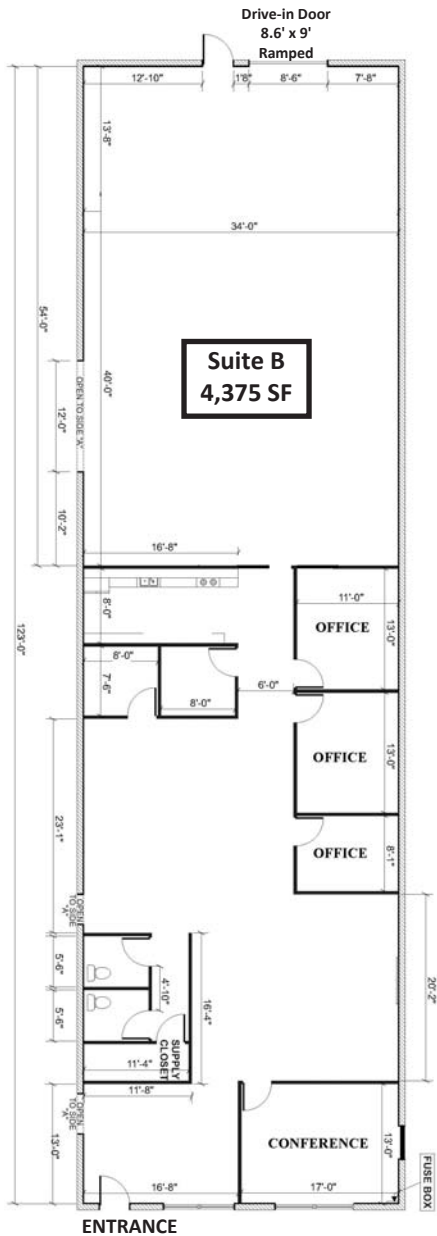
JJ@JoubranCommercial.com

Guilford Business Park

3 Wendy Court | Greensboro, NC 27409

3-B Wendy Court

- ❖ Size: 4,375 SF ±
- ❖ Warehouse Space: 1,819 SF
- ❖ Office Space: 2,556 SF
- ❖ Clear Height: 14'
- ❖ Dock High Doors: 0
- ❖ Drive-In Doors: 1 (8.6' x 9')
- ❖ Power: 3 Phase, 200 amp, 208 Volt



JJ Joubran, CCIM

(336) 270-9775

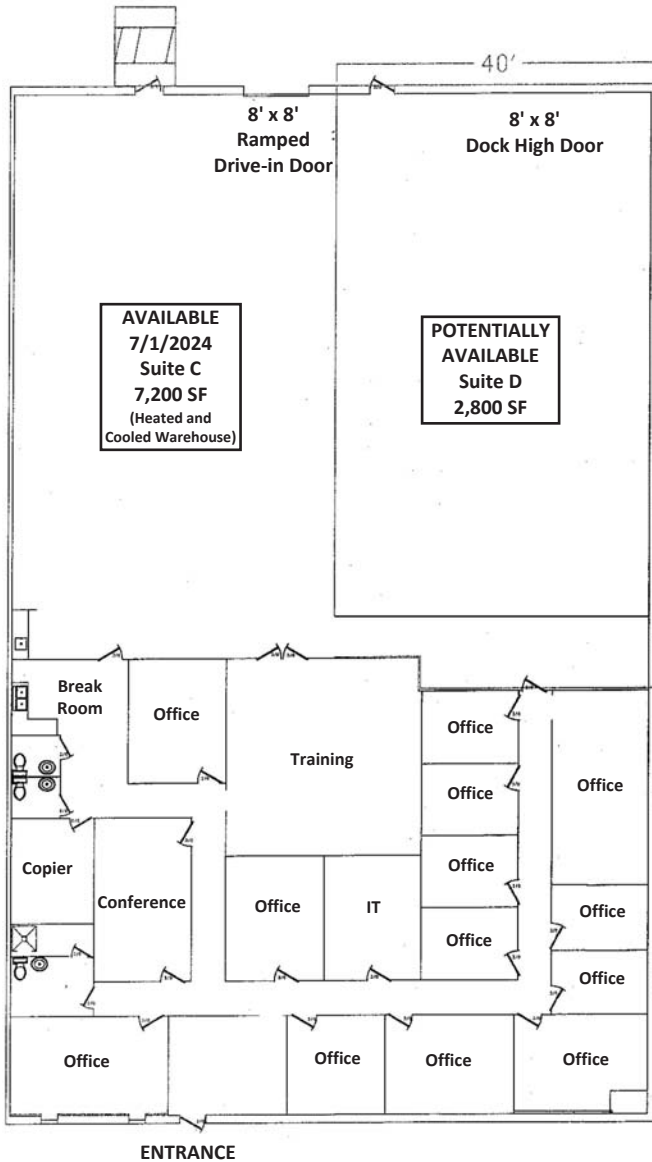
JJ@JoubranCommercial.com

Guilford Business Park

3 Wendy Court | Greensboro, NC 27409

3-C Wendy Court (Available July 1, 2024)

- ❖ Size: 7,200 - 10,000 SF ±
- ❖ Warehouse Space: 4,600 - 7,400 SF
- ❖ Office Space: 2,600 SF
- ❖ Clear Height: 13' to HVAC & 16' clear
- ❖ Drive-In Doors: 1 (8' wide x 8' tall)
- ❖ Dock High Doors: 1 (8' wide x 8' tall)
- ❖ Power: 3 Phase, 200 amp, 208 Volt



JJ Joubran, CCIM

(336) 270-9775

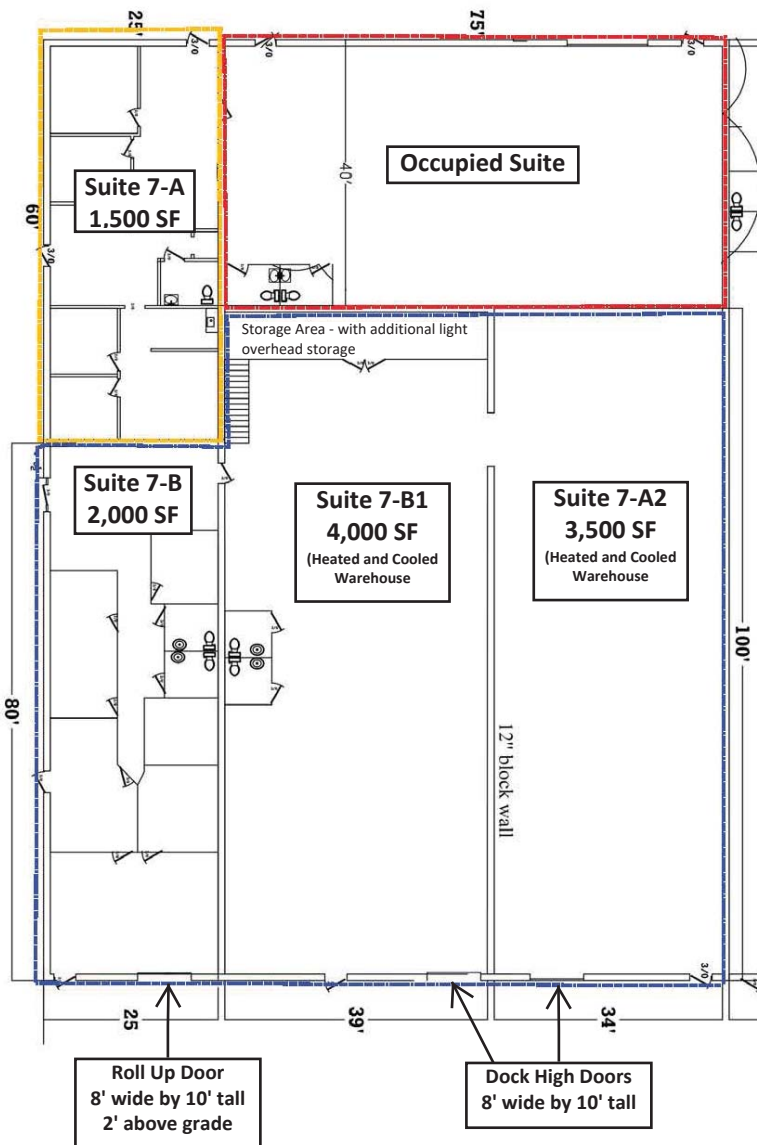
JJ@JoubranCommercial.com

Guilford Business Park

7 Wendy Court | Greensboro, NC 27409

7-A&B Wendy Court

- ❖ Size: 11,000 SF ±
- ❖ Warehouse Space: 7,500 SF
- ❖ Office Space: 3,500 SF
- ❖ Fully Heated & Cooled
- ❖ Clear Height: 15'4"
- ❖ Dock High Doors: 2 (8' wide x 10' tall)
- ❖ Drive-In Doors: 1 (8' wide x 10' tall), 2' above grade
- ❖ Power: 3 Phase, 200 amp, 208 Volt



JJ Joubran, CCIM

(336) 270-9775

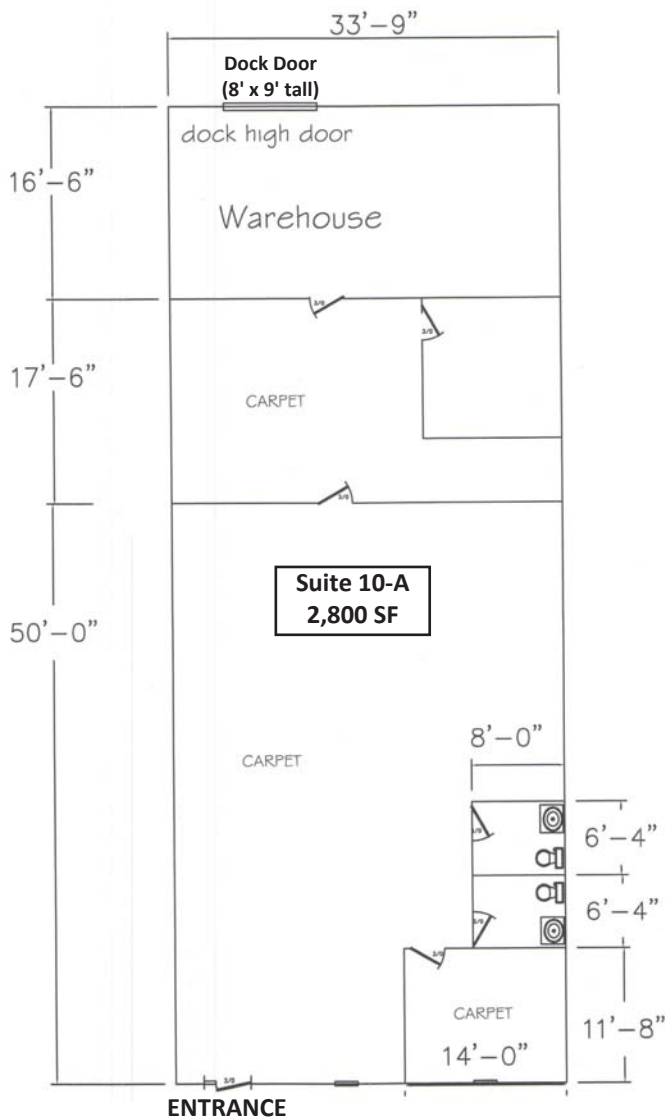
JJ@JoubranCommercial.com

Guilford Business Park

10 Wendy Court | Greensboro, NC 27409

10-A Wendy Court

- ❖ Size: 2,800 SF ±
- ❖ Warehouse Space: 557 SF
- ❖ Office Space: 2,243 SF
- ❖ Fully Heated & Cooled
- ❖ Clear Height: 11'
- ❖ Drop Ceiling: 10'
- ❖ Dock High Doors: 1 (8' wide x 9' tall)
- ❖ Power: 3 Phase, 200 amp, 208 Volt



JJ Joubran, CCIM

(336) 270-9775

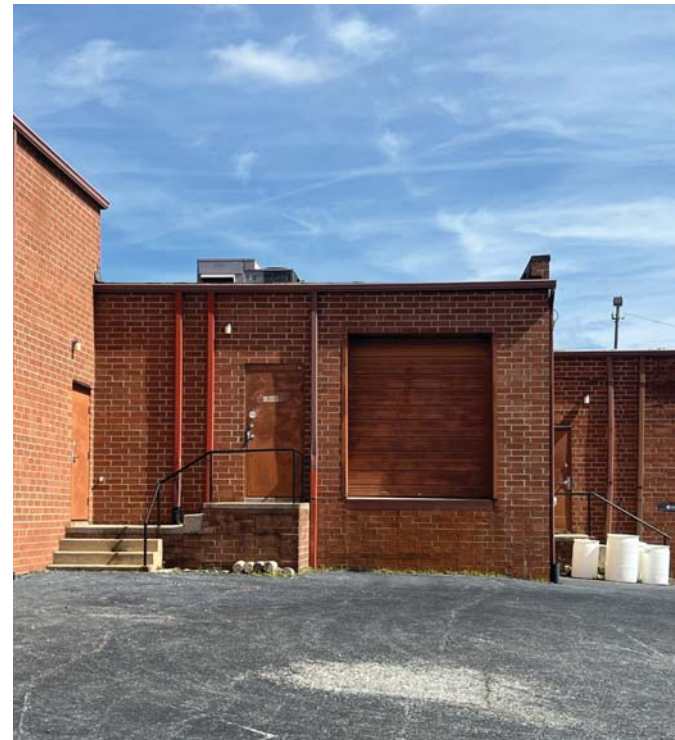
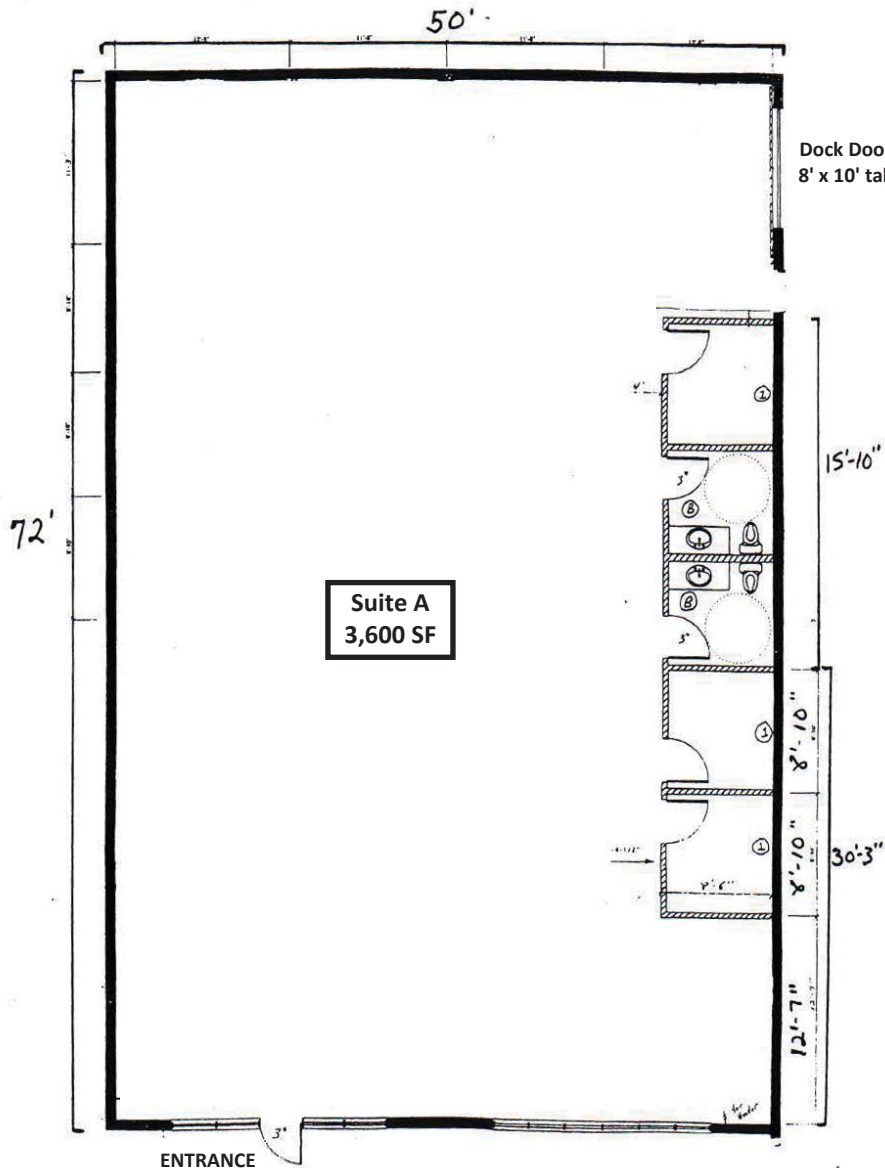
JJ@JoubranCommercial.com

Guilford Business Park

5711 West Market Street | Greensboro, NC 27409

5711-A West Market Street

- ❖ Size: 3,600 SF ±
- ❖ Retail Space
- ❖ Fully Heated and Cooled
- ❖ Clear Height: 10'
- ❖ Dock High Doors: 1
- ❖ Drive-In Doors: 0
- ❖ Power: 3 Phase, 200 amp, 208 Volt



JJ Joubran, CCIM

(336) 270-9775

JJ@JoubranCommercial.com

Guilford Business Park



Contact:

JJ Joubran, CCIM
Joubran Commercial Properties
(336) 270-9775
JJ@JoubranCommercial.com
www.JoubranCommercial.com