

LAKESIDE PROFESSIONAL

190 North Evergreen Avenue, Woodbury, NJ 08096

FIRST NATIONAL
REALTY PARTNERS



HIGHLIGHTS

COUNTY Gloucester

GLA 58,843

ACRES 3.27

DEMOGRAPHICS

1-Mile 3-Mile 5-Mile



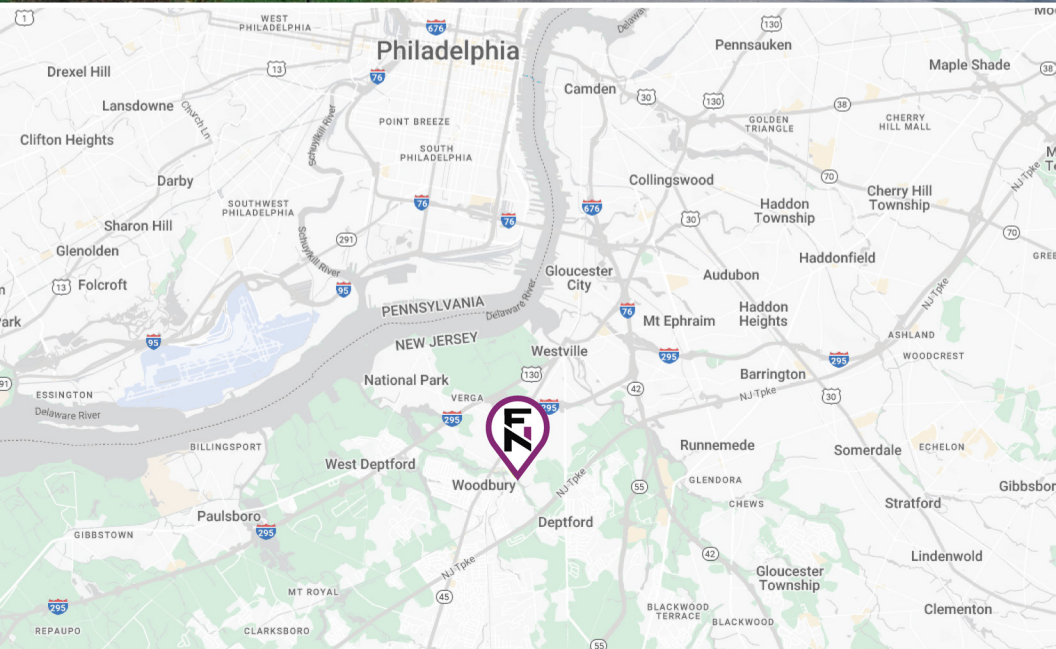
12,612 70,774 166,420



5,456 28,866 66,781



\$85,469 \$109,918 \$113,410



PROPERTY FEATURES

- Lakeside Professional Campus is an office building located within a mile of Inspira Medical Center, Gloucester County Courthouse, and the Woodbury train station.
- Suites feature private entrances and lobby suite entrances.
- Existing vacant suites are ready for immediate occupancy with minimal tenant improvements required.
- Conveniently located in close proximity to I-295, North Broad Street (Route 45) and the New Jersey Turnpike.
- Only 10 minutes from the Walt Whitman Bridge, allowing for easy access to the Philadelphia International Airport.



**PROPERTY
WEBSITE**

Leasing Inquiries: 732-698-5080 | leasing@fnrpusa.com

fnrpusa.com

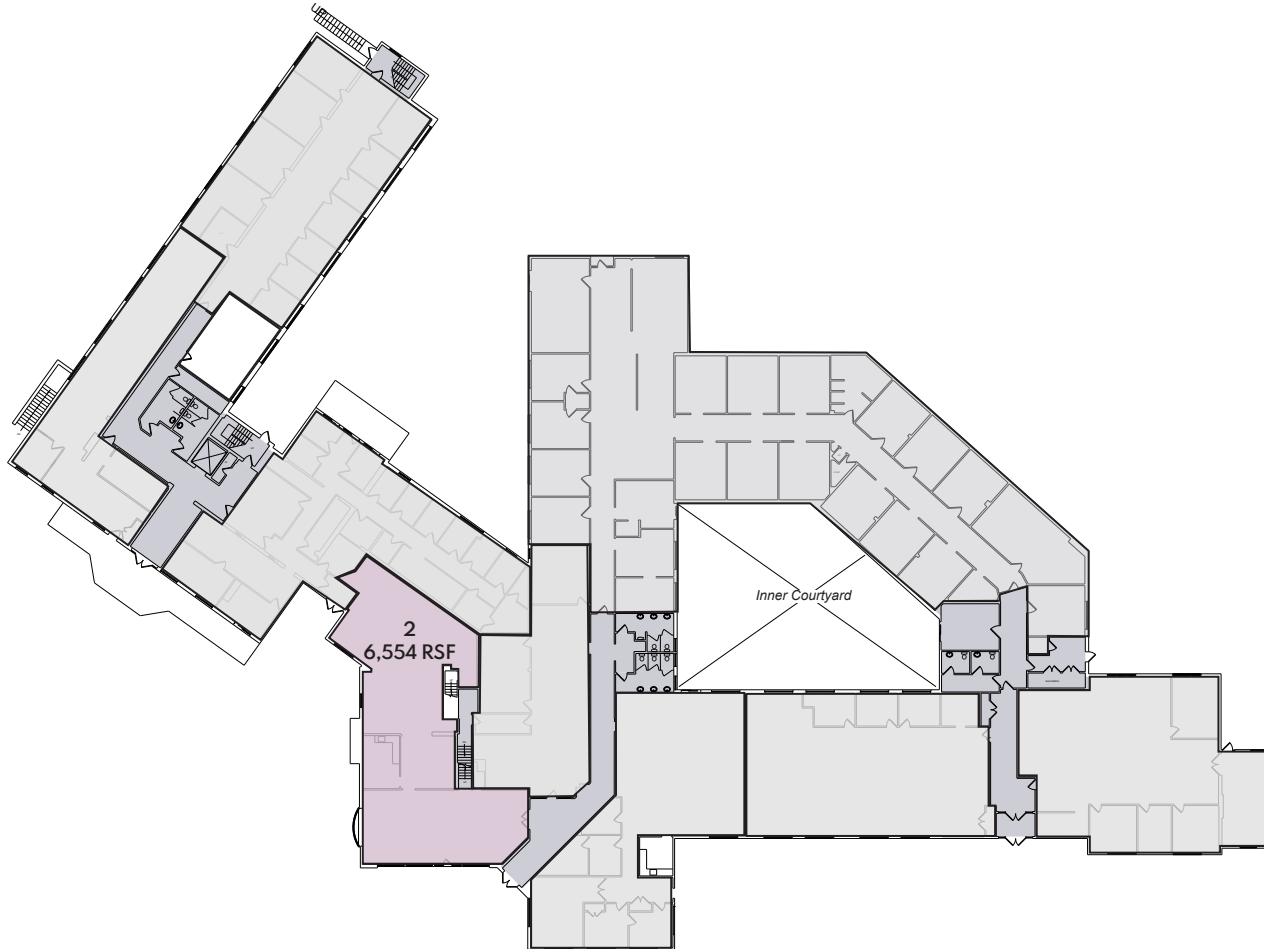
LAKESIDE PROFESSIONAL

190 North Evergreen Avenue, Woodbury, NJ 08096



FIRST FLOOR AVAILABILITIES

Suite 2 - 6,654 SF



LEGEND		
SUITE	TENANT NAME	SF
1	BEHAVIORAL INTERVENTIONS INC.	3,353
2	AVAILABLE	6,654
96	GIVING BETTER LIVES	4,677
101	IDEMIA	2,357
102	JEFFERSON MEDICAL GROUP	4,000
108	GLOUCESTER COUNTY EDUCATION ASSN.	3,600
120	DURAND ACADEMY	3,015
122	BEST OF BOTH WORLDS	3,762

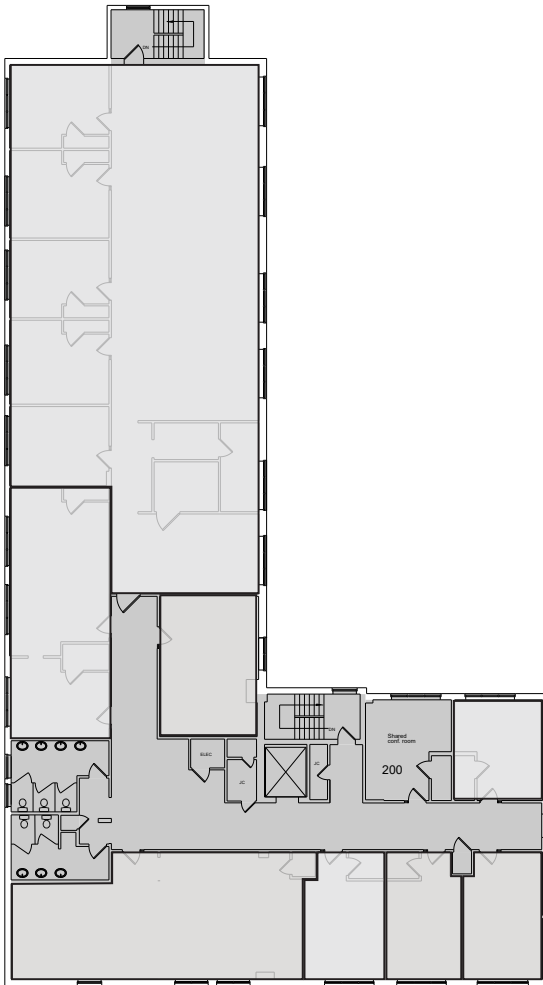


PROPERTY
WEBSITE

Leasing Inquiries: 732-698-5080 | leasing@fnrpusa.com

fnrpusa.com

SECOND FLOOR - FULLY LEASED



LEGEND

SUITE	TENANT NAME	SF
201	KENNETH DARBY LLC	385
202	GARDEN STATE PSYCHIATRIC	274
203	GARDEN STATE PSYCHIATRIC	415
204	KELLEY & CROSSLEY	437
205	GIVING BETTER LIVES	4,176
206	LEASED	1,093
207	HELENA AGRI ENTERPRISES	450
210	GIVING BETTER LIVES	1,491

