

FOR SALE

VACANT LAND

±79.59 ACRES FOR SALE

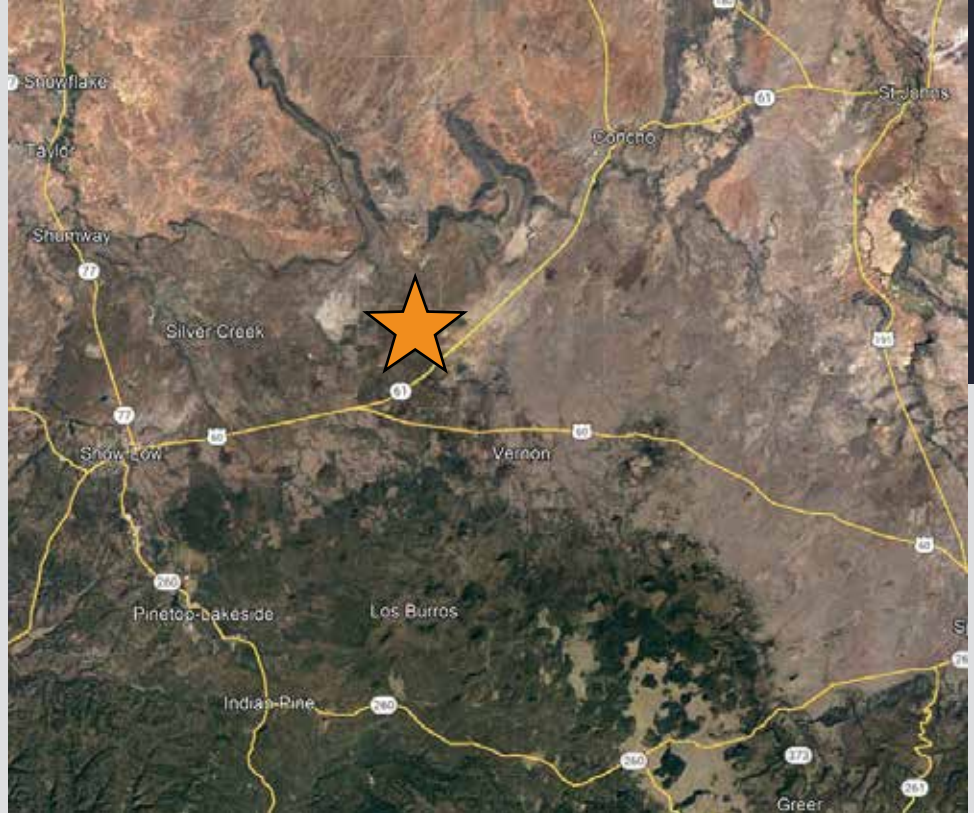
APACHE COUNTY

Prime investment opportunity at Hwy 61 & Charleen Dr in Concho, AZ.

107-16-001D

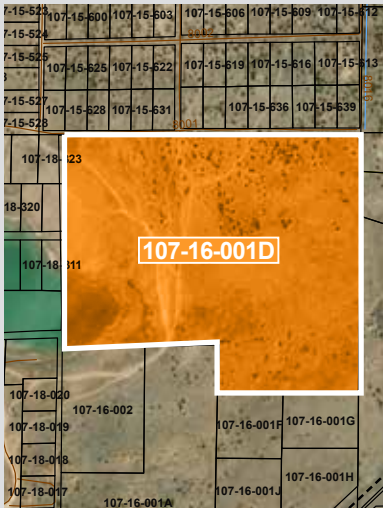
SALE PRICE

\$397,950



HIGHWAY 61 & CHARLEEN DR.

Apache County in northeastern Arizona is renowned for its breathtaking landscapes, outdoor activities, and natural splendor. Home to attractions like Petrified Forest National Park and the largest Native American reservation, Navajo Nation, it offers a tranquil, rural lifestyle due to its low population density. Despite its appeal for those seeking a quieter life, it's essential to acknowledge that the county's economy relies heavily on tourism and agriculture, making it less ideal for those pursuing urban job opportunities. Apache County stands out as a popular choice for acquiring raw land in Arizona, with relaxed zoning regulations and other compelling reasons to consider investing in this picturesque region.



CONTACT US



ADJACENT TO AZ-61

Tyson Breinholt
D 480.966.7513
M 602.315.7131
tbreinholt@cpiaz.com

Cliff Jenkins
D 480.634.2332
M 480.888.6017
cjenkins@cpiaz.com

The information contained herein has been obtained from various sources. We have no reason to doubt its accuracy; however, J & J Commercial Properties, Inc. has not verified such information and makes no guarantee, warranty or representation about such information. The prospective buyer or lessee should independently verify all dimensions, specifications, floor plans, and all information prior to the lease or purchase of the property. All offerings are subject to prior sale, lease, or withdrawal from the market without prior notice. 05 13 24