



FOR SALE

Commercial Building Zoned PD

3213, N 29th Street, Tampa, FL 33605

eXp Commercial | 10752 DEERWOOD PARK BOULEVARD | Jacksonville, FL 32256 |

Savanah Land

904.660.1469
savanah.land@expcommercial.com

Britney Mroczkowski, CCIM

360.360.2749
britney.mroczkowski@expcommercial.com



OFFERING SUMMARY

Sale Price:	\$525,000
Building Size:	1,739 SF
Lot Size:	0.12 Acres
Number of Units:	1
Price / SF:	\$301.90
Year Built:	1950
Zoning:	PD

PROPERTY OVERVIEW

We are thrilled to present this unique commercial opportunity at 3213 N 29th St, Tampa, Florida, retail space encompassing 1,739 square feet situated on a 0.12-acre lot. The property is located in a prime location, an ideal use for an owner/use, investor or developer. This property highlights Tampa's dynamic retail environment and the building's adaptability.

PROPERTY HIGHLIGHTS

- Located in East Tampa near Ybor City
- Flexible PD Zoning
- Open floor plan
- 2 unisex restrooms
- Patio space and back yard

DEMOGRAPHICS

	1 MILE	3 MILES	5 MILES
Total Households	6,103	43,624	115,937
Total Population	13,895	96,067	264,892
Average HH Income	\$33,051	\$57,575	\$63,592

Savanah Land

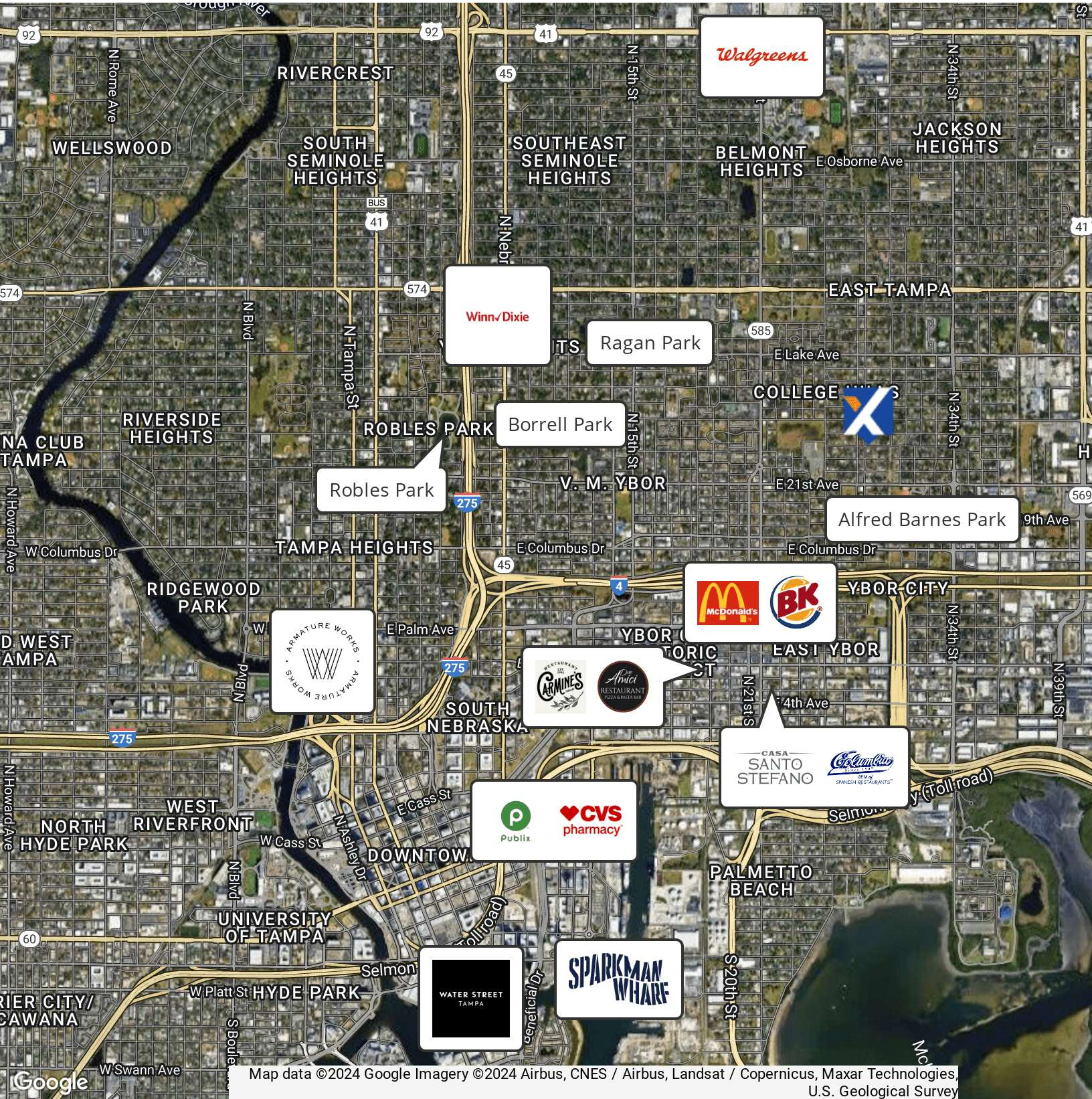
904.660.1469
savanah.land@expcommercial.com

Britney Mroczkowski, CCIM

360.360.2749
britney.mroczkowski@expcommercial.com



FOR SALE | 3213 N 29th Street, Tampa, Florida 33605



Savanah Land

904.660.1469
savanah.land@expcommercial.com

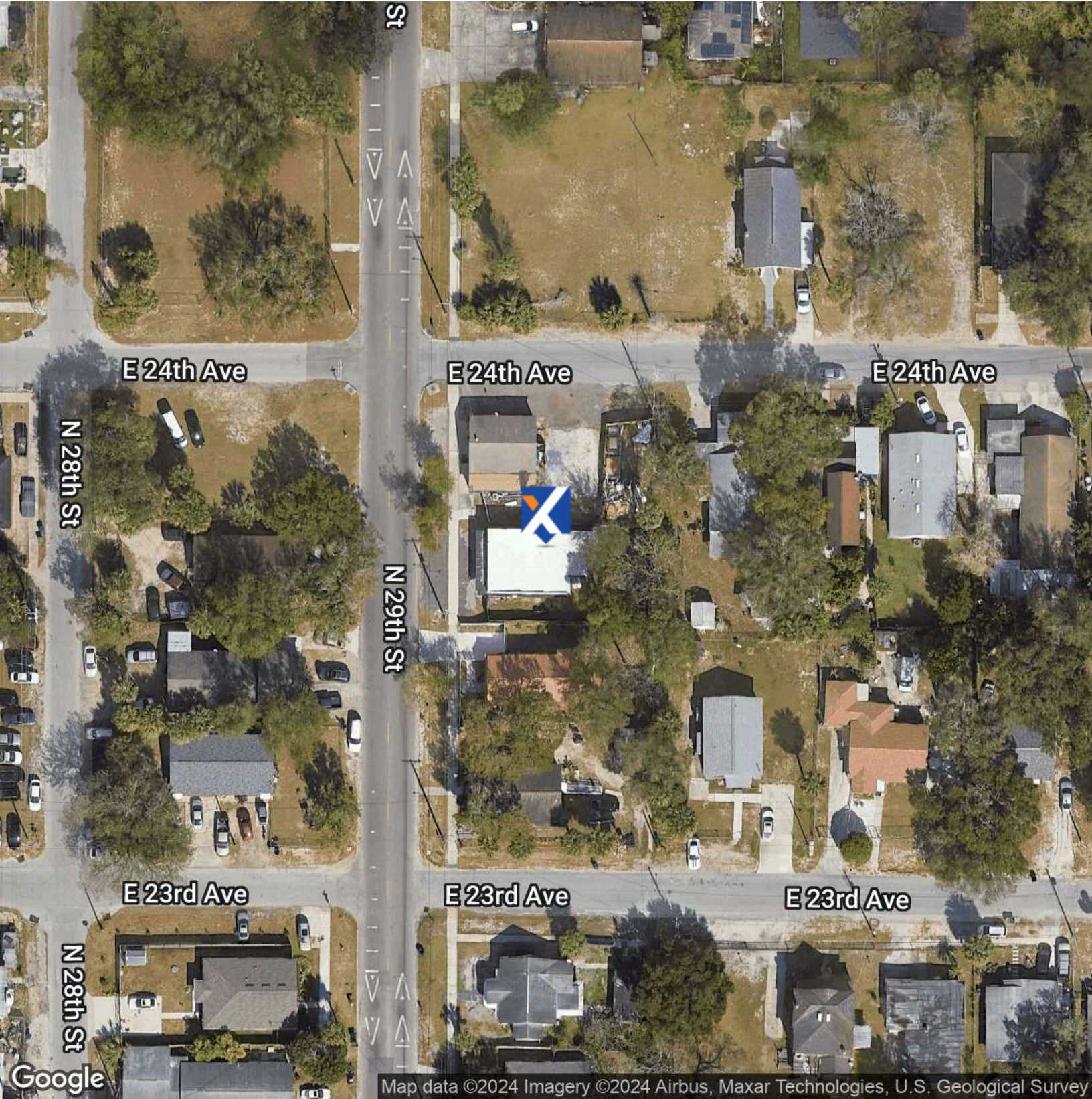
Britney Mroczkowski, CCIM

360.360.2749
britney.mroczkowski@expcommercial.com



eXp Commercial, LLC, its direct and indirect parents and their subsidiaries (together, "We") obtained the information above from sources believed to be reliable, however, We have not verified its accuracy and make no guarantee, warranty or representation, expressed or implied, about such information. The information contained above is submitted subject to the possibility of errors, omissions, price changes, rental or other conditions, prior sale, lease or financing, or withdrawal without notice. Any projections, opinions, assumptions or estimates of the information contained above or provided in connection therewith, either expressed or implied, are for example only, and they may not represent current or future performance of the subject property. You, together with your tax and legal advisors, should conduct your own thorough investigation of the subject property and potential investment.

FOR SALE | **3213 N 29th Street, Tampa, Florida 33605**



Savanah Land

904.660.1469
savanah.land@expcommercial.com

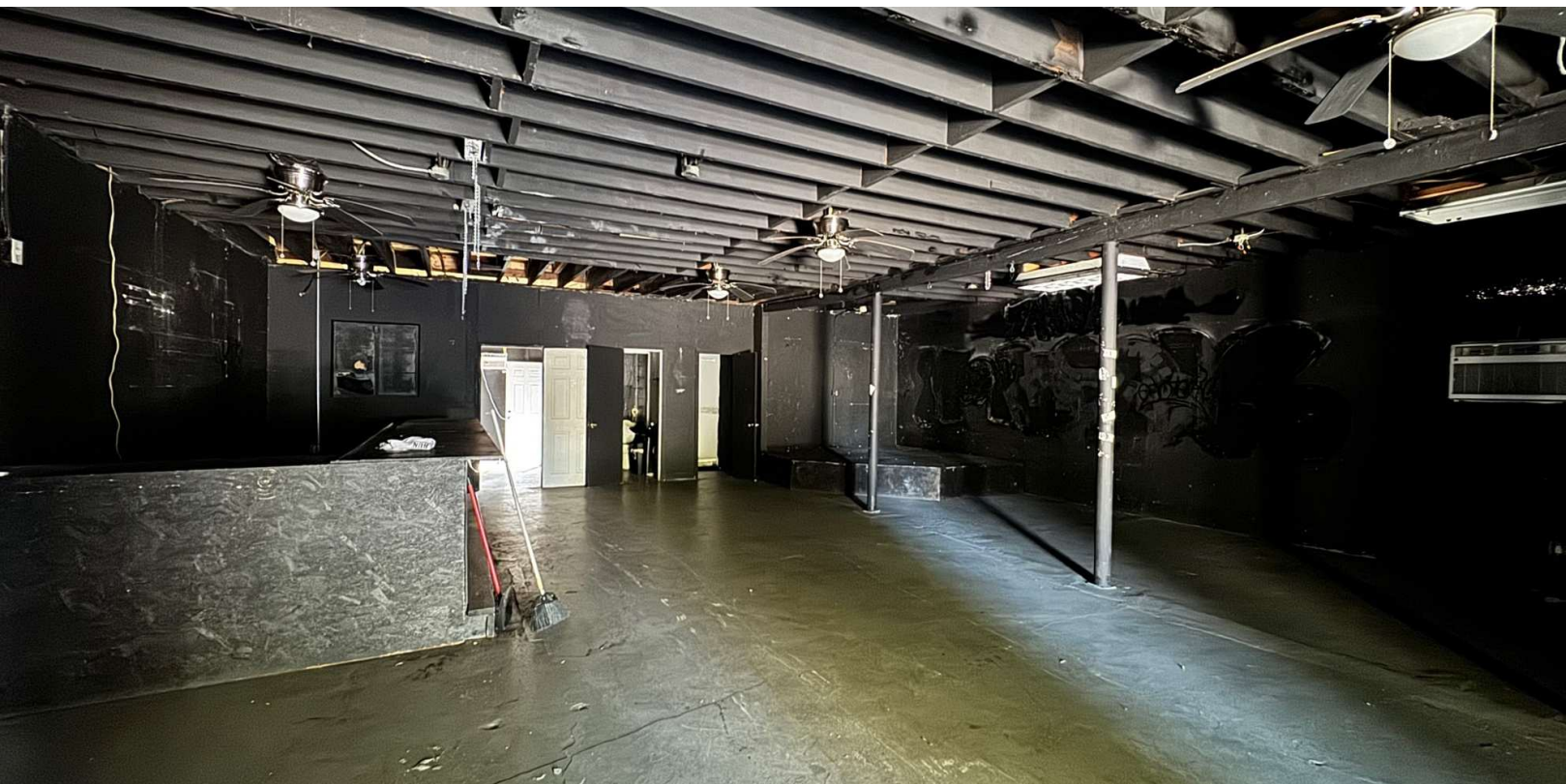
Britney Mroczkowski, CCIM

360.360.2749
britney.mroczkowski@expcommercial.com



eXp Commercial, LLC, its direct and indirect parents and their subsidiaries (together, "We") obtained the information above from sources believed to be reliable, however, We have not verified its accuracy and make no guarantee, warranty or representation, expressed or implied, about such information. The information contained above is submitted subject to the possibility of errors, omissions, price changes, rental or other conditions, prior sale, lease or financing, or withdrawal without notice. Any projections, opinions, assumptions or estimates of the information contained above or provided in connection therewith, either expressed or implied, are for example only, and they may not represent current or future performance of the subject property. You, together with your tax and legal advisors, should conduct your own thorough investigation of the subject property and potential investment.

FOR SALE | **3213 N 29th Street, Tampa, Florida 33605**



Savanah Land

904.660.1469
savanah.land@expcommercial.com

Britney Mroczkowski, CCIM

360.360.2749
britney.mroczkowski@expcommercial.com

expTM
COMMERCIAL

eXp Commercial, LLC, its direct and indirect parents and their subsidiaries (together, "We") obtained the information above from sources believed to be reliable, however, We have not verified its accuracy and make no guarantee, warranty or representation, expressed or implied, about such information. The information contained above is submitted subject to the possibility of errors, omissions, price changes, rental or other conditions, prior sale, lease or financing, or withdrawal without notice. Any projections, opinions, assumptions or estimates of the information contained above or provided in connection therewith, either expressed or implied, are for example only, and they may not represent current or future performance of the subject property. You, together with your tax and legal advisors, should conduct your own thorough investigation of the subject property and potential investment.



SAVANAH LAND

Direct: 904.660.1469
savannah.land@expcommercial.com

FL #SL3540788



BRITNEY MROCKOWSKI, CCIM

Commercial Designated Managing Broker - Florida

Direct: 360.360.2749
britney.mroczkowski@expcommercial.com

FL #BK3241479

Savanah Land

904.660.1469
savannah.land@expcommercial.com

Britney Mroczkowski, CCIM

360.360.2749
britney.mroczkowski@expcommercial.com

