



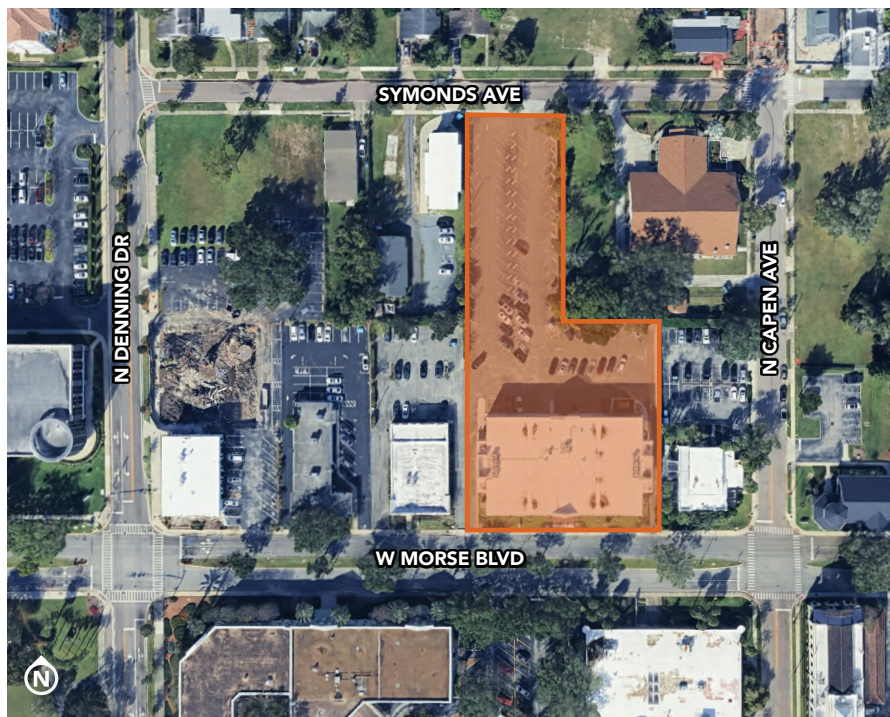
OFFICE CONDO FOR SALE OR FOR LEASE

807 W Morse Blvd, Winter Park, FL 32789

Prominent two-story office building located in Winter Park's desirable downtown core

PROPERTY HIGHLIGHTS

- Second floor office condo
- May be leased or purchased
- Iconic presence inside the core of Winter Park's downtown area
- Excellent surface parking in a market with limited parking opportunities
- Well managed and maintained
- Well suited for the long-term investor seeking rent growth and a Winter Park address
- Potential for owner/user occupant



ASKING PRICE:

Contact broker for details



SQUARE FOOTAGE:

Unit 339-507: 8,653 ± RSF



PARKING:

100± surface spaces



ZONING:

Office-1



LOCATION:

Close proximity to abundant surrounding dining and retail
Convenient access to I-4



HARBERT
REALTY SERVICES

DAMIEN MADSEN

dmadsen@harbertrealty.com | 407.256.2844

JOSH SMITH

jsmith@harbertrealty.com | 407.377.4050

For More Information: HarbertRealty.com
400 S Park Ave, Suite 225, Winter Park, FL 32789

The information contained herein has been obtained from sources deemed reliable, however, HRS makes no guarantees, warranties or representation as to its completeness or accuracy thereof. The presentation of this property is submitted subject to errors, omissions, change of price or conditions, prior to sale or lease or withdrawal without notice.

OFFICE CONDO FOR SALE OR FOR LEASE

807 W Morse Blvd, Winter Park, FL 32789

Location Overview



AVG HH INCOME		
1 Mile	3 Miles	5 Miles
\$159,959	\$167,798	\$122,025

POPULATION		
1 Mile	3 Miles	5 Miles
11,887	94,891	299,332

EMPLOYEES		
1 Mile	3 Miles	5 Miles
26,559	85,269	249,654



DAMIEN MADSEN
dmadsen@harbertrealty.com | 407.256.2844

JOSH SMITH
jsmith@harbertrealty.com | 407.377.4050

For More Information: HarbertRealty.com
400 S Park Ave, Suite 225, Winter Park, FL 32789

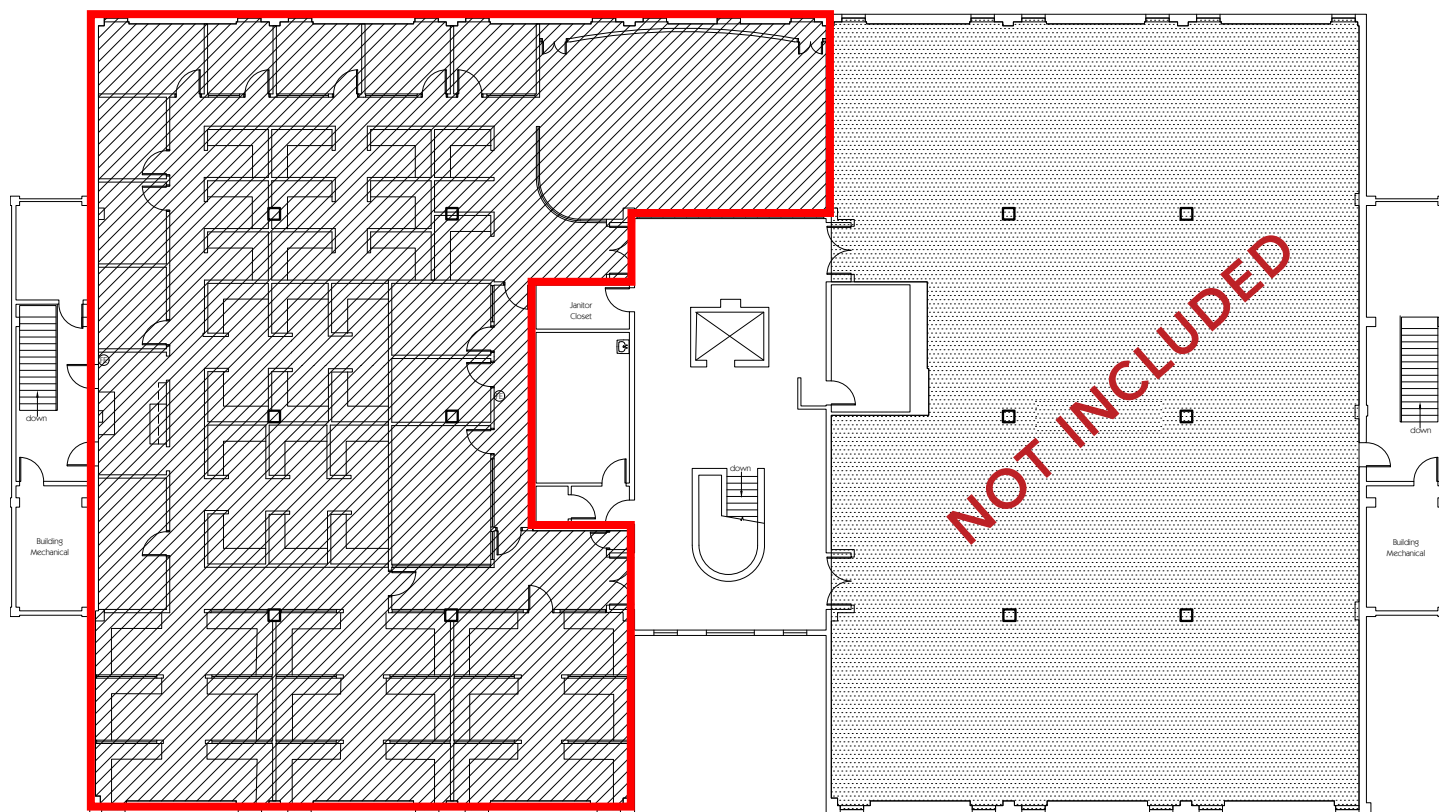
OFFICE CONDO FOR SALE OR FOR LEASE

807 W Morse Blvd, Winter Park, FL 32789

Floor Plan

Second Floor

Unit 339-507: ±8,653 RSF



(Vacant)



HARBERT
REALTY SERVICES

DAMIEN MADSEN

dmadsen@harbertrealty.com | 407.256.2844

JOSH SMITH

jsmith@harbertrealty.com | 407.377.4050

For More Information: HarbertRealty.com

400 S Park Ave, Suite 225, Winter Park, FL 32789