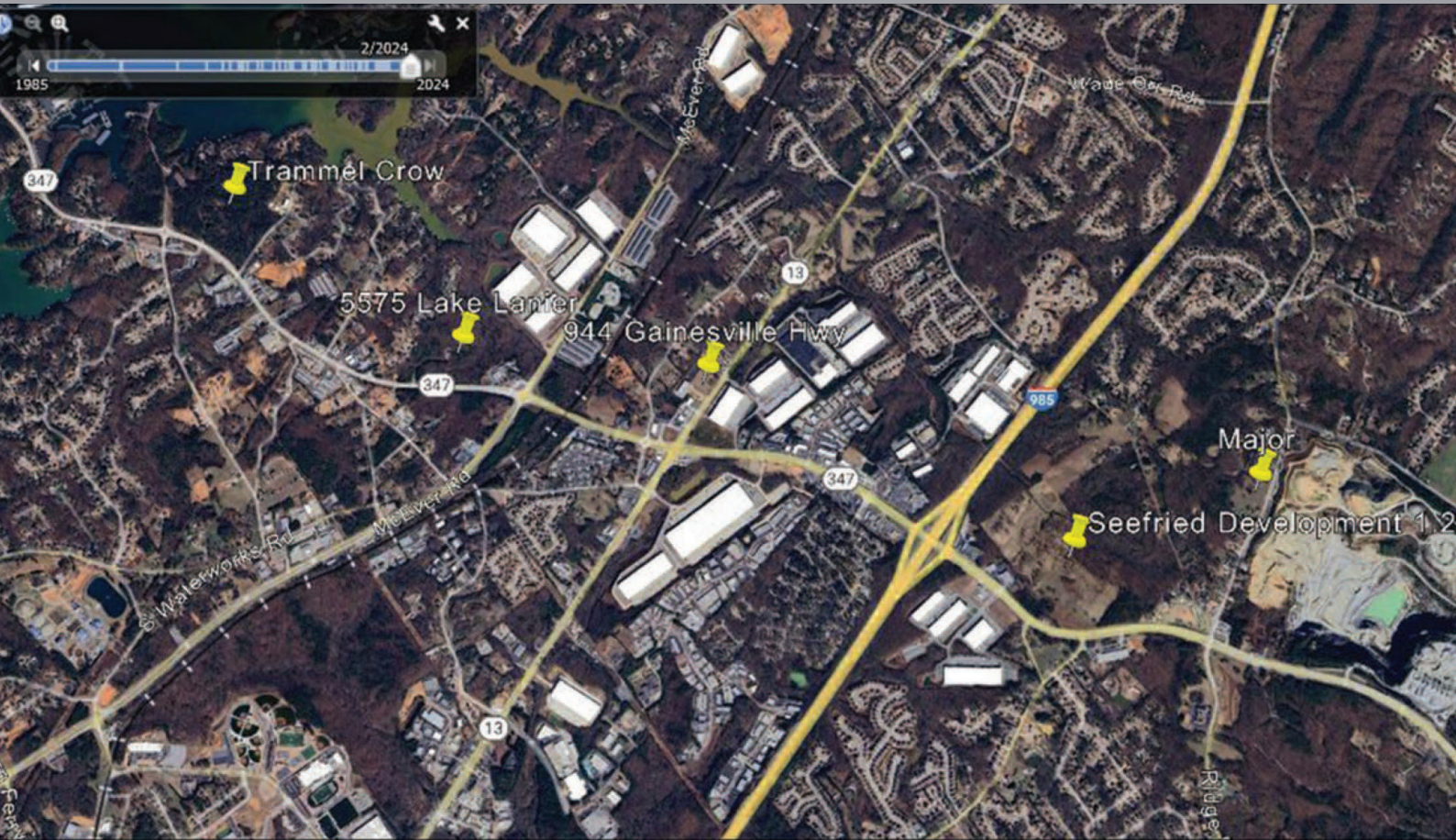


# 944 GAINESVILLE HIGHWAY

www.brighton-properties.com

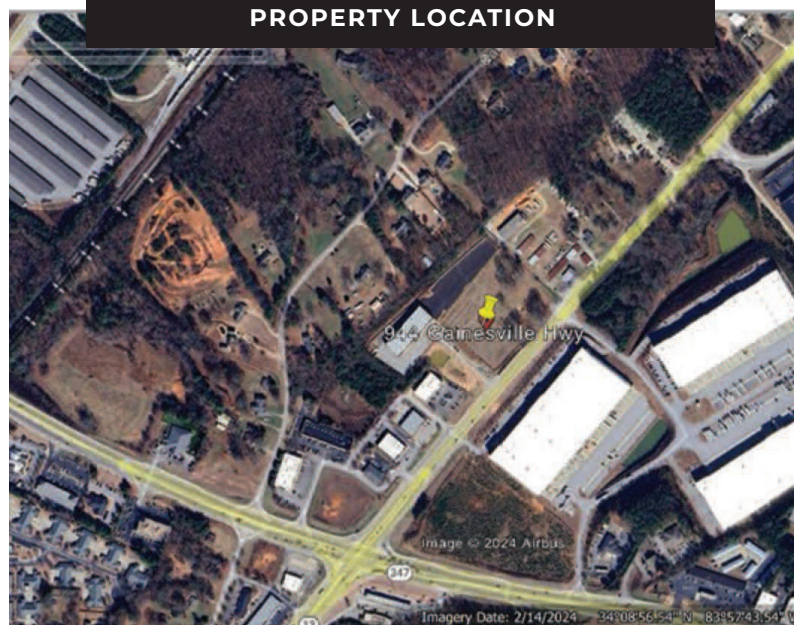
# BRIGHTON PROPERTY GROUP



## PROPERTY HIGHLIGHTS

- 944 GAINESVILLE HIGHWAY  
BUFORD, GA 30518
- ZONED M1 LIGHT INDUSTRIAL IN
- UP TO 40,000 SQ FT BUILDING  
WITH 1 ACRE OF OUTSIDE  
STORAGE

## PROPERTY LOCATION



## LOCAL MARKET CONTACTS

**STUART BRACEY**  
404.664.5321  
sb@brighton-properties.com

**JOSH GARRARD**  
404.226.2920  
jg@brighton-properties.com



PROJECT NAME	STORAGE FACILITY ATLANTA HIGHWAY
344 GAINESVILLE HWY 15.5 AC. LOTS CITY OF BUFORD GEORGIA	

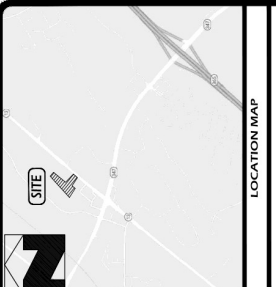
DATE: 5-19-21

DESIGNED BY	CHEN/CHEN
CHECKED BY	JME
DATE	JME

Not Released For Construction  
OWNER/DEVELOPER

© COPYRIGHT 2021  
ALL RIGHTS RESERVED  
THIS DRAWING IS THE PROPERTY OF EVANS DESIGN GROUP, INC. AND IS NOT TO BE REPRODUCED OR TRANSMITTED IN ANY FORM OR BY ANY MEANS, ELECTRONIC OR MECHANICAL, INCLUDING PHOTOCOPYING, RECORDING, OR BY ANY INFORMATION STORAGE AND RETRIEVAL SYSTEM, WITHOUT THE WRITTEN PERMISSION OF EVANS DESIGN GROUP, INC.

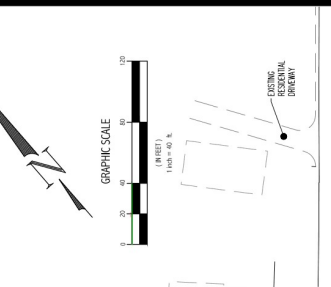
REVISIONS	
FOR NUMBER	21-022
SHEET TITLE	C-4



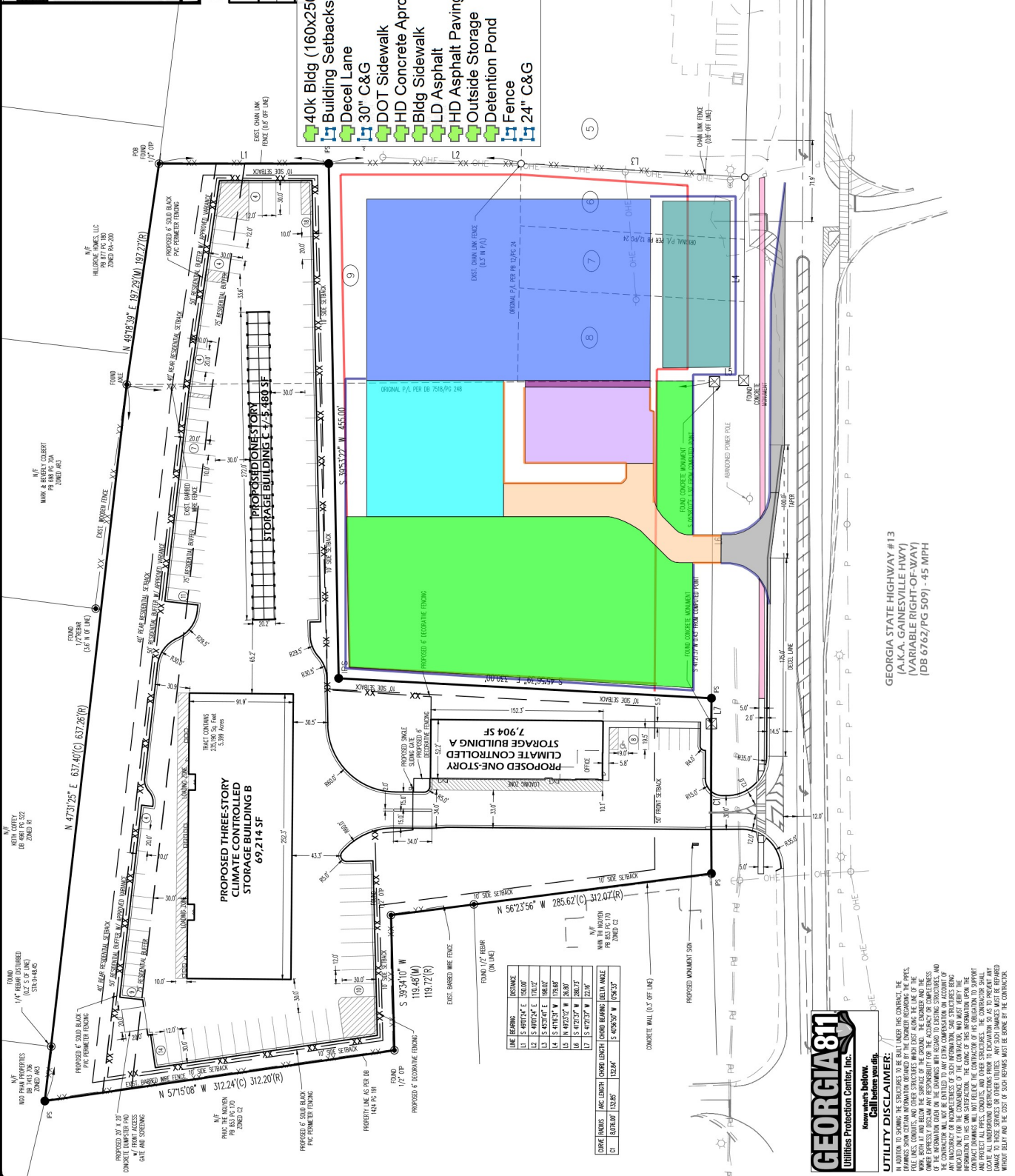
**PARKING REQUIREMENTS:**

CITY REQUIREMENT	MINIMUM PARKING	PROVIDED PARKING
OFFICE @ 746 S.F.		
1 SPACE PER 300 S.F.	3	8

- 40k Bldg (160x250)
- Building Setbacks
- Decel Lane
- 30" C&G
- DOT Sidewalk
- HD Concrete Apron
- Bldg Sidewalk
- LD Asphalt
- HD Asphalt Paving
- Outside Storage
- Detention Pond
- Fence
- 24" C&G



2021-####



GEORGIA STATE HIGHWAY #13  
(A.K.A. GAINESVILLE HWY)  
(VARIABLE RIGHT-OF-WAY)  
(DB 6762/PG 509) -45 MPH



**UTILITY DISCLAIMER:**  
IN ADDITION TO SHOWING THE STRUCTURES TO BE BUILT UNDER THIS CONTRACT, THE DRAWINGS SHOW CERTAIN UTILITIES LOCATED BY THE CONTRACTOR. THE CONTRACTOR SHALL VERIFY THE LOCATION AND DEPTH OF ALL UTILITIES PRIOR TO CONSTRUCTION. THE CONTRACTOR SHALL BE RESPONSIBLE FOR OBTAINING ALL NECESSARY PERMITS AND FOR THE COST OF SUCH PERMITS. THE CONTRACTOR SHALL BE RESPONSIBLE FOR THE COST OF SUCH PERMITS. THE CONTRACTOR SHALL BE RESPONSIBLE FOR THE COST OF SUCH PERMITS.