

# FOR LEASE

3,000 SF INDUSTRIAL WAREHOUSE SPACE

# 30

**Blackjack Rd.**

FREDERICKSBURG, VA 22405



## SPECIFICATIONS

Size:	3,000 SF
Lease Rate:	\$14.00 PSF
NNN:	\$2.65 PSF
Zoning:	M1



# PROPERTY OVERVIEW



Johnson Realty Advisors presents a 3,000 SF industrial warehouse space at 30 Blackjack Rd, available for lease. This versatile space features 24 ft clear heights, 3-phase power, two 14 ft roll-up doors, heat, and ceiling fans, making it ideal for storage, light manufacturing, or distribution. Strategically located just off Route 2 with quick access to I-95, the property offers excellent connectivity for transportation and logistics. With its functional layout, modern utilities, and prime location within a larger industrial building, this space provides a flexible, efficient solution for growing businesses seeking a well-appointed industrial environment.



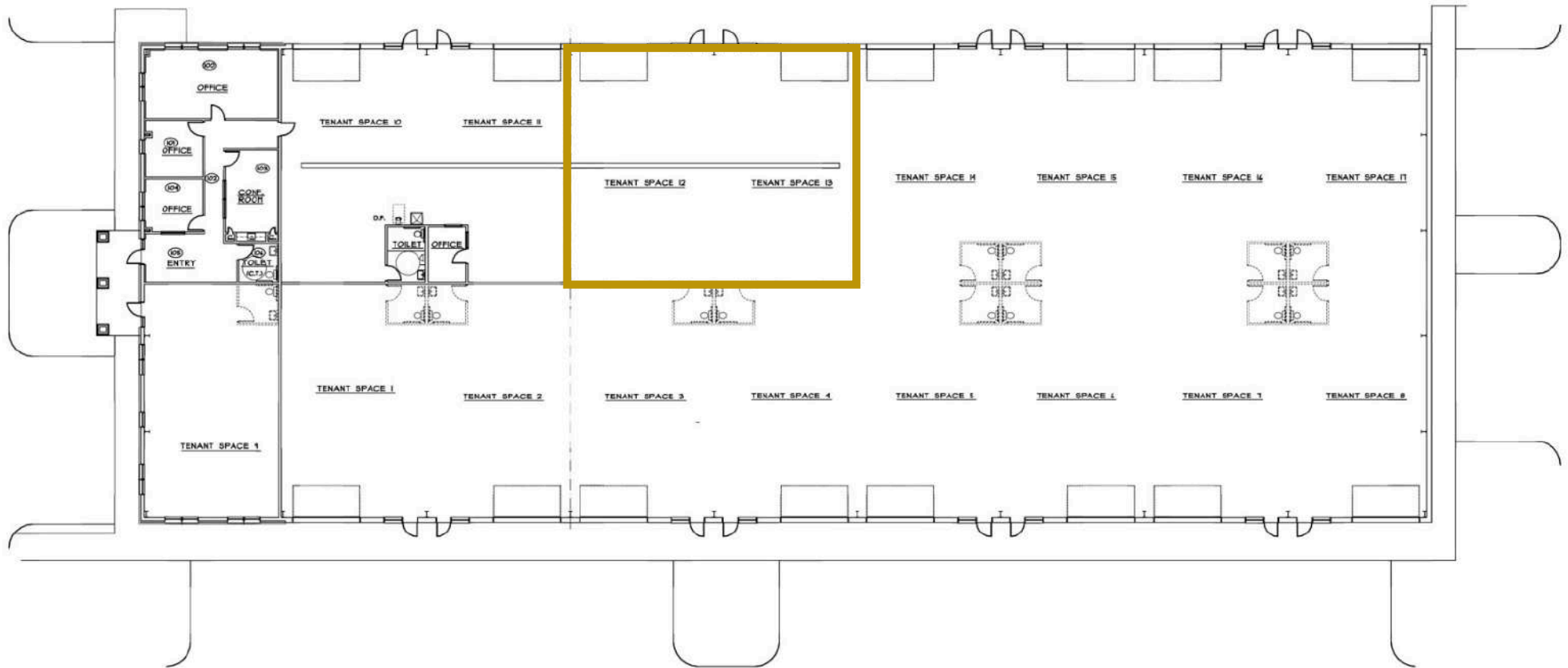
- 3,000 SF warehouse space for storage, distribution, or manufacturing
- 24 ft clear height for flexible operations
- 3-phase power for industrial equipment
- Two 14 ft roll-up doors for easy loading
- Heated with ceiling fans in a prime, easily accessible location



# PROPERTY PHOTOS



# BUILDING FLOORPLAN



FLOOR PLAN

SCALE: 3/32" = 1'-0"

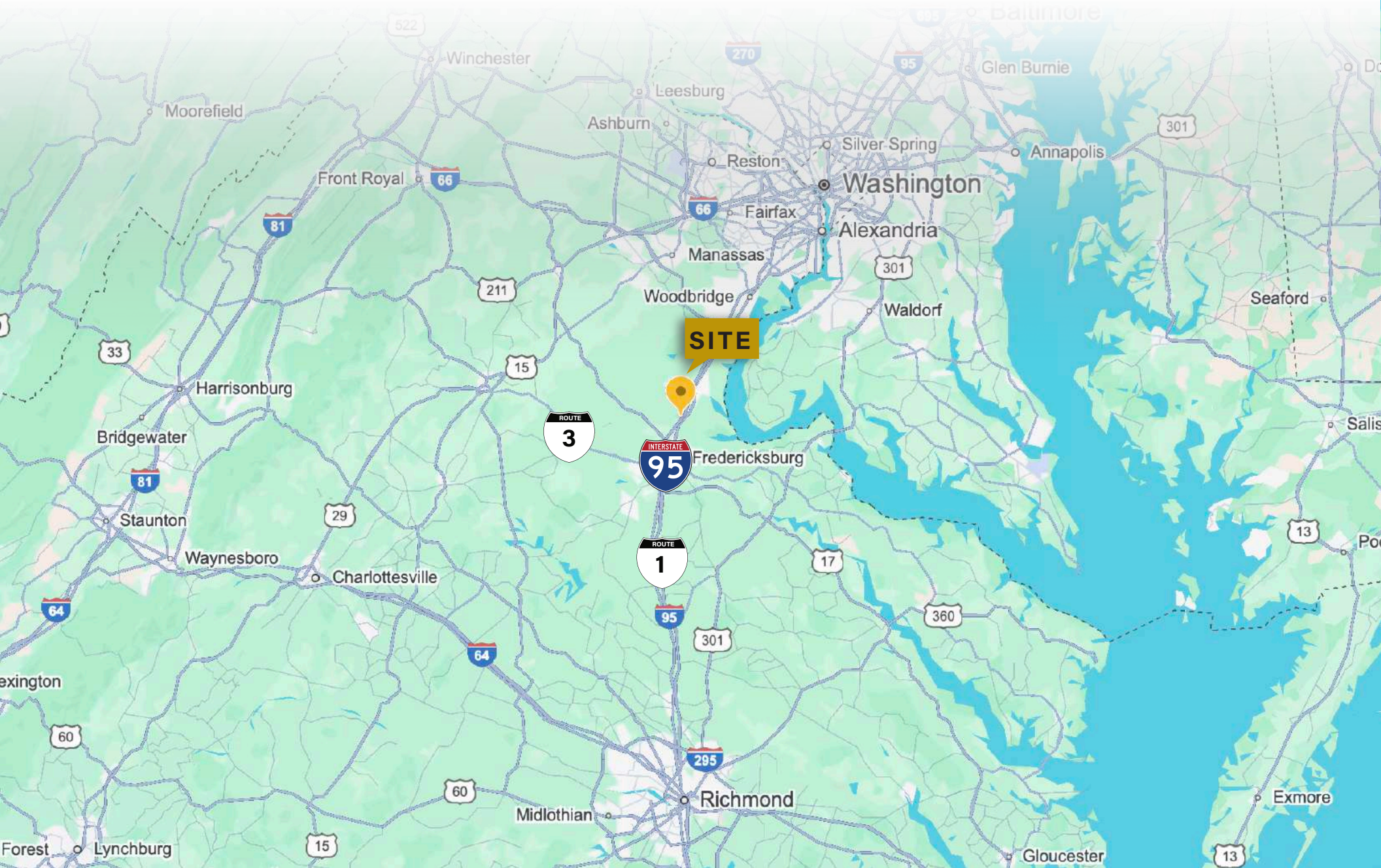


# LOCAL MAP VIEW





# REGIONAL MAP VIEW



# DEMOGRAPHIC/INCOME REPORT



INCOME	2 mile	5 mile	10 mile
Avg Household Income	\$126,622	\$146,983	\$131,472
Median Household Income	\$94,359	\$120,382	\$107,839
< \$25,000	38	1,320	6,601
\$25,000 - 50,000	72	2,290	8,669
\$50,000 - 75,000	112	3,497	12,734
\$75,000 - 100,000	82	2,142	8,257
\$100,000 - 125,000	49	2,748	10,199
\$125,000 - 150,000	46	2,292	7,661
\$150,000 - 200,000	72	3,305	10,663
\$200,000+	100	5,385	14,134

POPULATION	2 mile	5 mile	10 mile
2020 Population	1,811	65,255	218,468
2024 Population	1,992	70,415	232,524
2029 Population Projection	2,210	78,420	257,039
Annual Growth 2020-2024	2.5%	2.0%	1.6%
Annual Growth 2024-2029	2.2%	2.3%	2.1%
Median Age	38.5	37.7	37.2
Bachelor's Degree or Higher	25%	41%	39%
U.S. Armed Forces	25	996	3,890

## FOR MORE INFORMATION PLEASE CONTACT:



**Heather Hagerman**

📞 540-429-2429 (Cell)

📞 540-372-7675 (Office)

✉️ [hagerman@johnsonrealtyadvisors.com](mailto:hagerman@johnsonrealtyadvisors.com)



**Fitzhugh Johnson III**

📞 540-623-4565 (Cell)

📞 540-372-7675 (Office)

✉️ [fitzhugh@johnsonrealtyadvisors.com](mailto:fitzhugh@johnsonrealtyadvisors.com)



**Kingston Simmons**

📞 540-842-5585 (Cell)

📞 540-372-7675 (Office)

✉️ [kingston@johnsonrealtyadvisors.com](mailto:kingston@johnsonrealtyadvisors.com)



**Andrew Hall**

📞 540-656-3515 (Cell)

📞 540-372-7675 (Office)

✉️ [andrew@johnsonrealtyadvisors.com](mailto:andrew@johnsonrealtyadvisors.com)



JOHNSON

REALTY

ADVISORS

All information contained herein was made based upon information furnished to us by the owner or from sources we believe are reliable. While we do not doubt its accuracy, we have not verified it and we do not make any guarantee, warranty or representation about it. The property offered is subject to prior sale, lease, change of price or withdrawal from the market without notice.