

OFFICE SPACE FOR SUBLEASE

6,000-16,000 SF AVAILABLE



TRANSWESTERN

REAL ESTATE
SERVICES

6912 S QUENTIN ST

CENTENNIAL, CO 80112

NEW SUBLEASE LISTING AT ARAPAHOE & PEORIA!

4 YEARS LEFT ON TERM

PLUG AND PLAY

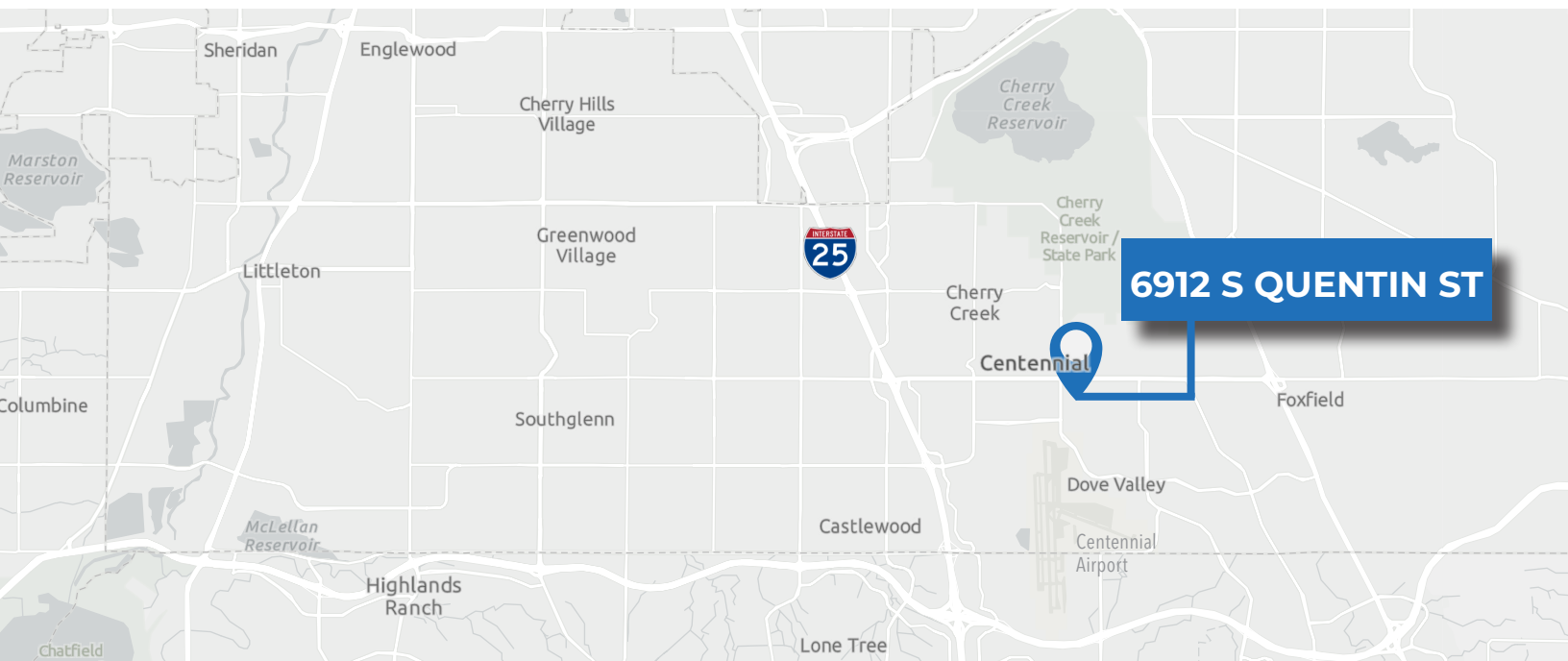
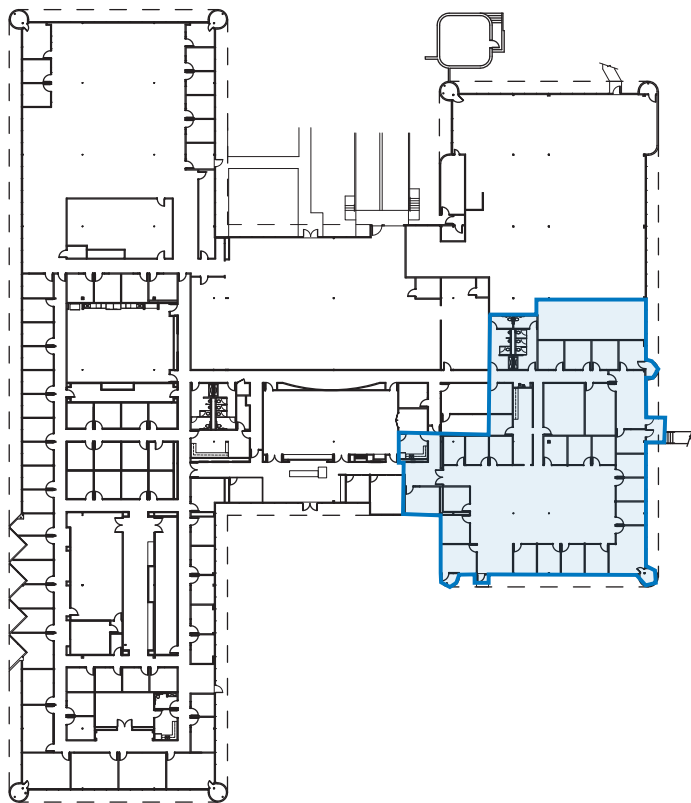
OFFICE SPACE IN A GREAT LOCATION

SPACE FEATURES

- Corner glass-line
- Perimeter private offices with floor to ceiling glass fronts
- Open area with cubes
- Kitchen
- Restrooms with showers
- Small warehouse area available if needed



6,000-16,000 SF AVAILABLE



LEASING INFORMATION

Karen Clarke

720 891 6000

karen.clarke@transwestern.com

Lily Austin

713 244 4445

lily.austin@transwestern.com

5251 DTC Parkway | Suite 1100

Greenwood Village, CO 80111

T 303.639.3000

www.transwestern.com

The information provided herein was obtained from sources believed reliable; however, Transwestern makes no guarantees, warranties or representations as to the completeness of accuracy thereof. The presentation of this property is submitted subject to errors, omissions, change of price or conditions, prior to sale or lease, or withdrawal without notice. Copyright © 2025 Transwestern.