



CHARLOTTE, NC 28203

500 EAST BLVD

1,290 SF OFFICE AVAILABLE FOR LEASE



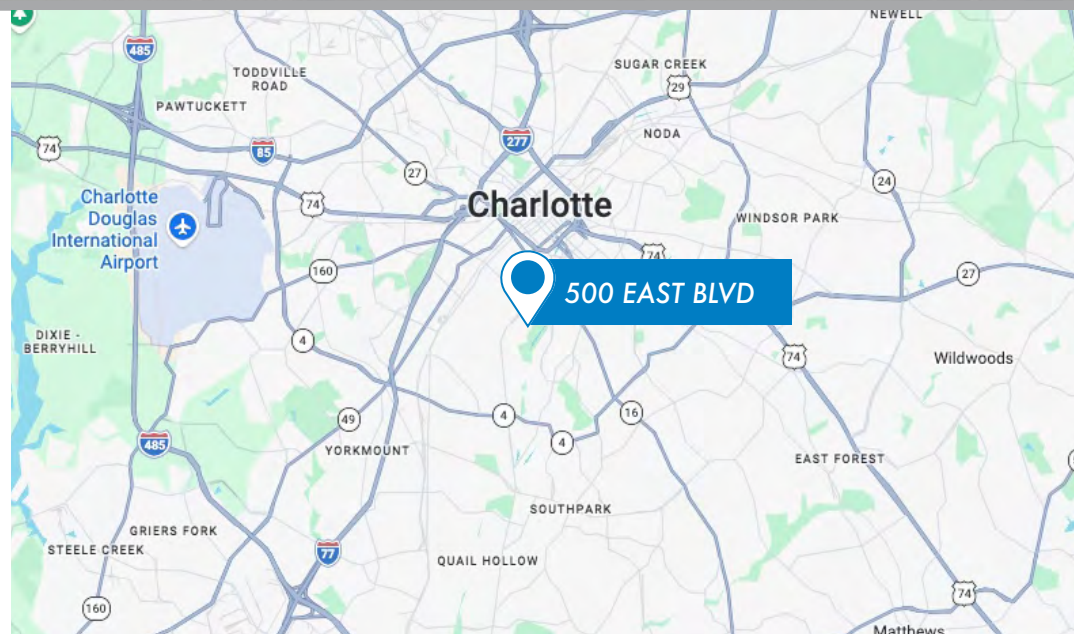
1,290 SF OFFICE AVAILABLE FOR LEASE

500 EAST BLVD

CHARLOTTE, NC 28203

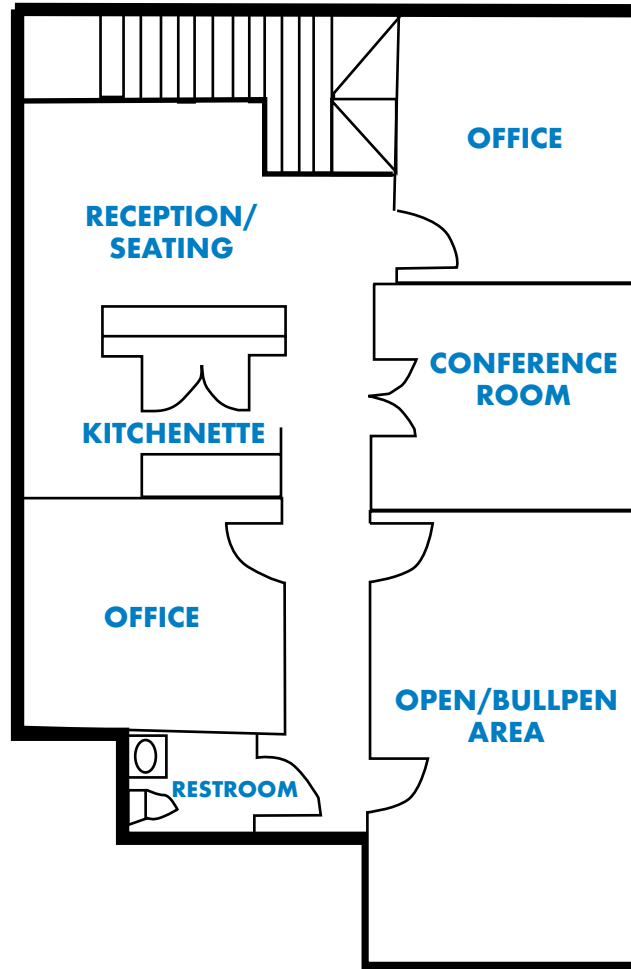
PROPERTY INFORMATION

- Office situated in Dilworth, one of Charlotte's most desirable neighborhoods, known for its walkability and strong mix of popular restaurants, retailers and Freedom Park
- Convenient access to South End, Midtown, and Uptown Charlotte
- 1,290 SF second-floor office available for lease with dedicated entrance off of East Blvd
- Features: Two Private offices, a conference room, custom "built-in" desk bull pen area, private break room and private restroom
- Access to surface level parking
- Lease Rate: \$45/PSF
- Available: December 1, 2026



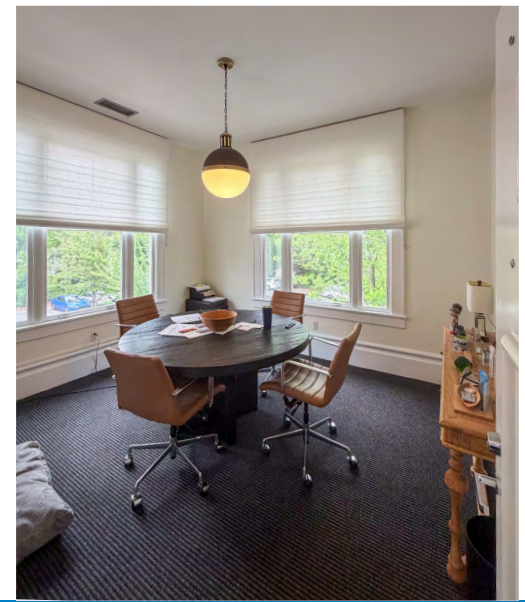
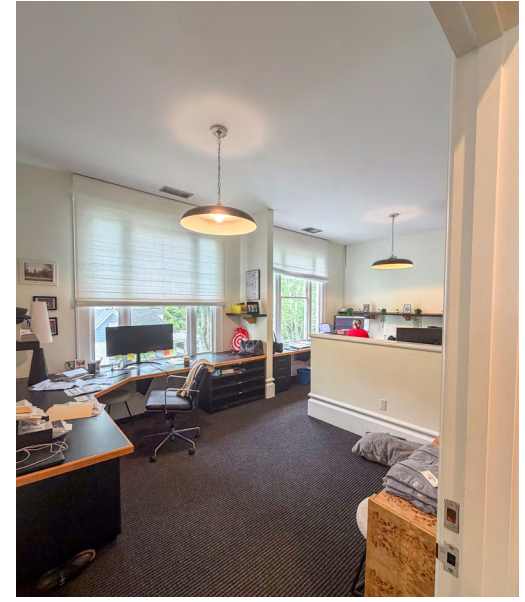
CHAPMAN CHASTAIN
980.266.9292
chapman@ascent.re





INTERIOR PHOTOS

500 EAST BLVD
1,290 SF OFFICE AVAILABLE FOR LEASE

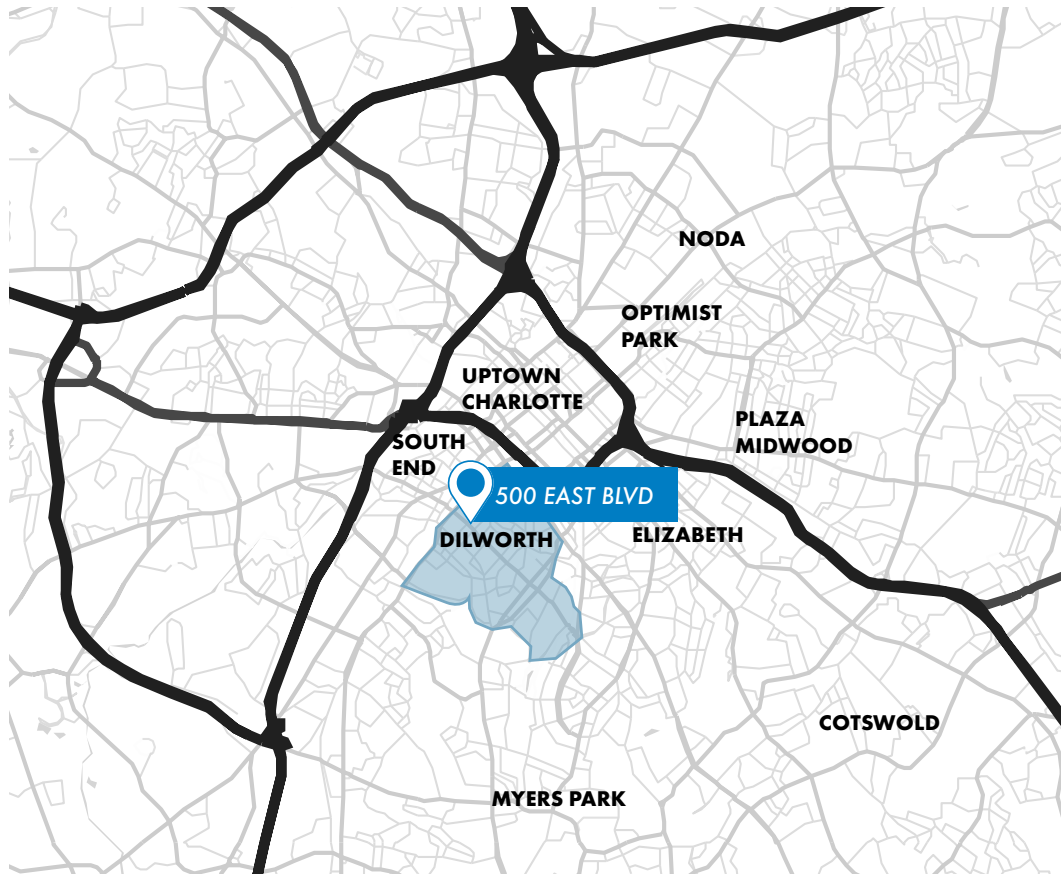




AREA OVERVIEW

500 EAST BLVD
1,290 SF OFFICE AVAILABLE FOR LEASE

Nestled just south of Uptown, Dilworth is celebrated for its charming bungalows and picturesque, tree-lined streets. The neighborhood features excellent walkability, a welcoming atmosphere for families, and convenient access to an array of quality eateries and retail options. Dilworth fosters a tight-knit community with connections to cultures worldwide. Residents can indulge in a variety of international cuisines at local restaurants, while unique shops showcase crafts and art from across the globe.



DEMOGRAPHICS	1 MILE	3 MILES	5 MILES
Population	26,798	134,500	283,005
Median Age	33.5	35	35.8
Avg Household Income	\$135,885	\$129,659	\$119,080
Median Home Value	\$786,934	\$719,737	\$607,298
Employees	40,853	158,856	256,620
Businesses	5,610	18,978	30,173



CHAPMAN CHASTAIN
980.266.9292
chapman@ascent.re

