

65.757± ACRES LAND

FOR SALE

EAST BROAD STREET AND TAYLOR ROAD | PATASKALA, OH

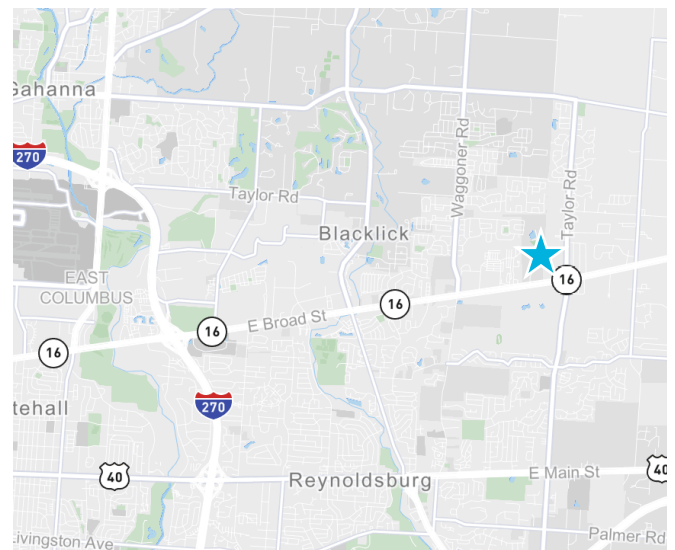


PROPERTY HIGHLIGHTS

65.757± ACRES

Development land across from Bath & Body Works and Victoria's Secret Headquarters

- 65.757± acres
- Average daily traffic count on East Broad in 2019 - 25,012
- Average household income in a 1 mile radius: \$91,537
- Utilities available
- Call for pricing!



JOHN HALL

Senior Vice President
+1 614 430 5081
john.hall@cbre.com

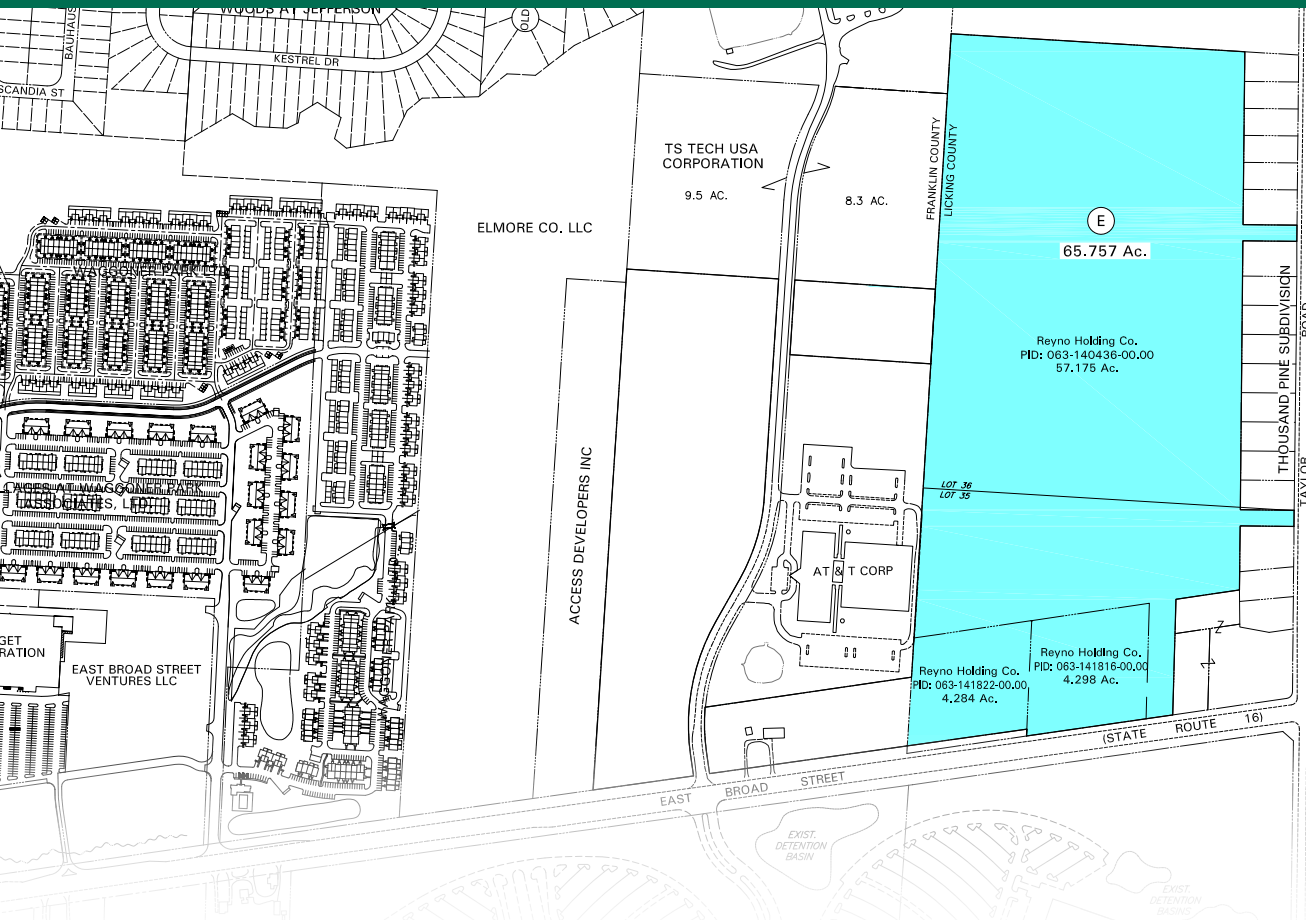
DON MATSANOFF

First Vice President
+1 614 430 5000
don.matsanoff@cbre.com

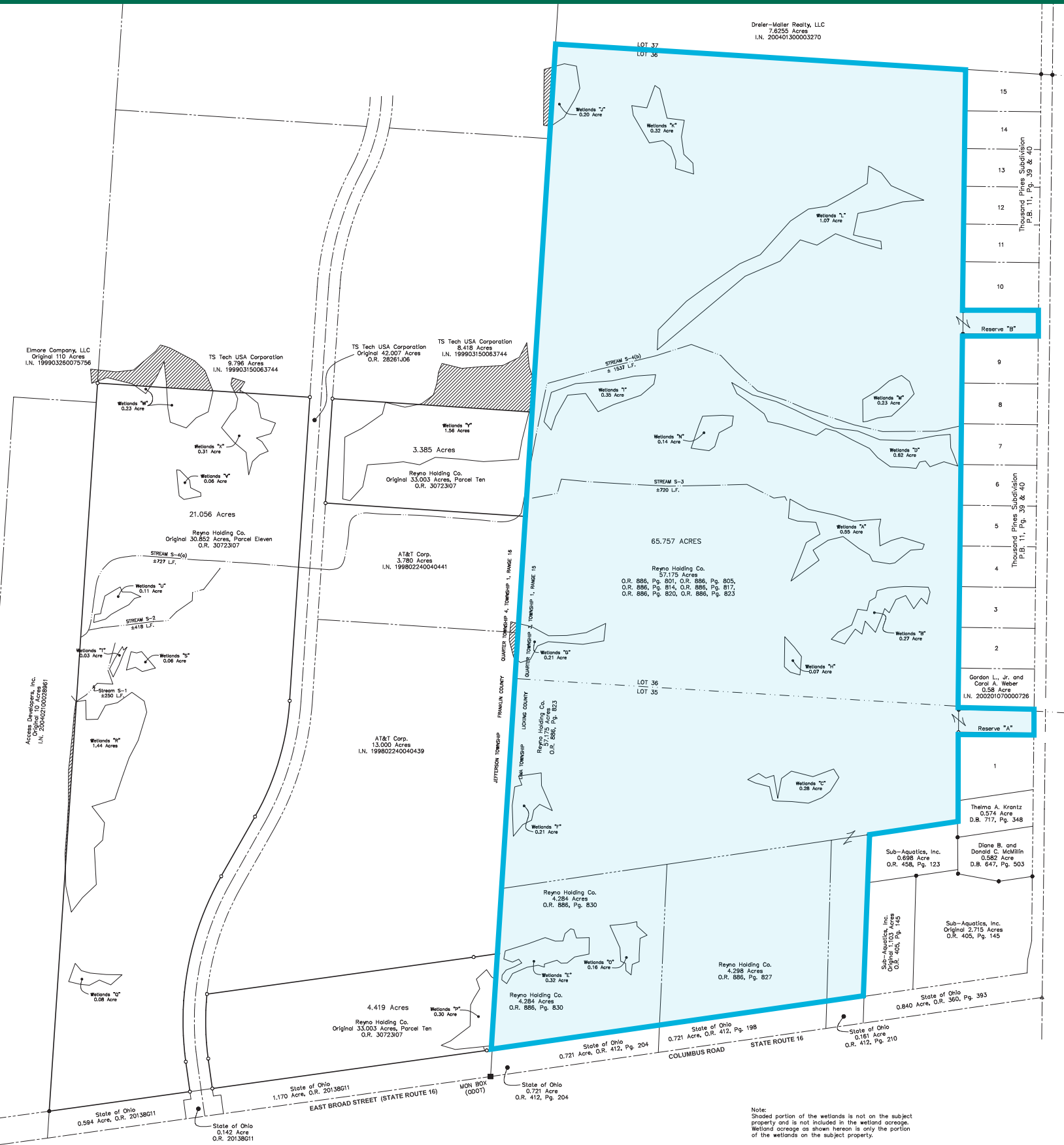
AJ NORMAN

Associate
+1 614 430 5025
a.j.norman@cbre.com

CBRE



Dreier-Mellar Realty, LLC
7,6255 Acres
I.N. 20040190003270



Note:
Shaded portion of the wetlands is not on the subject property and is not included in the wetland acreage. Wetland acreage as shown hereon is only the portion of the wetlands on the subject property.

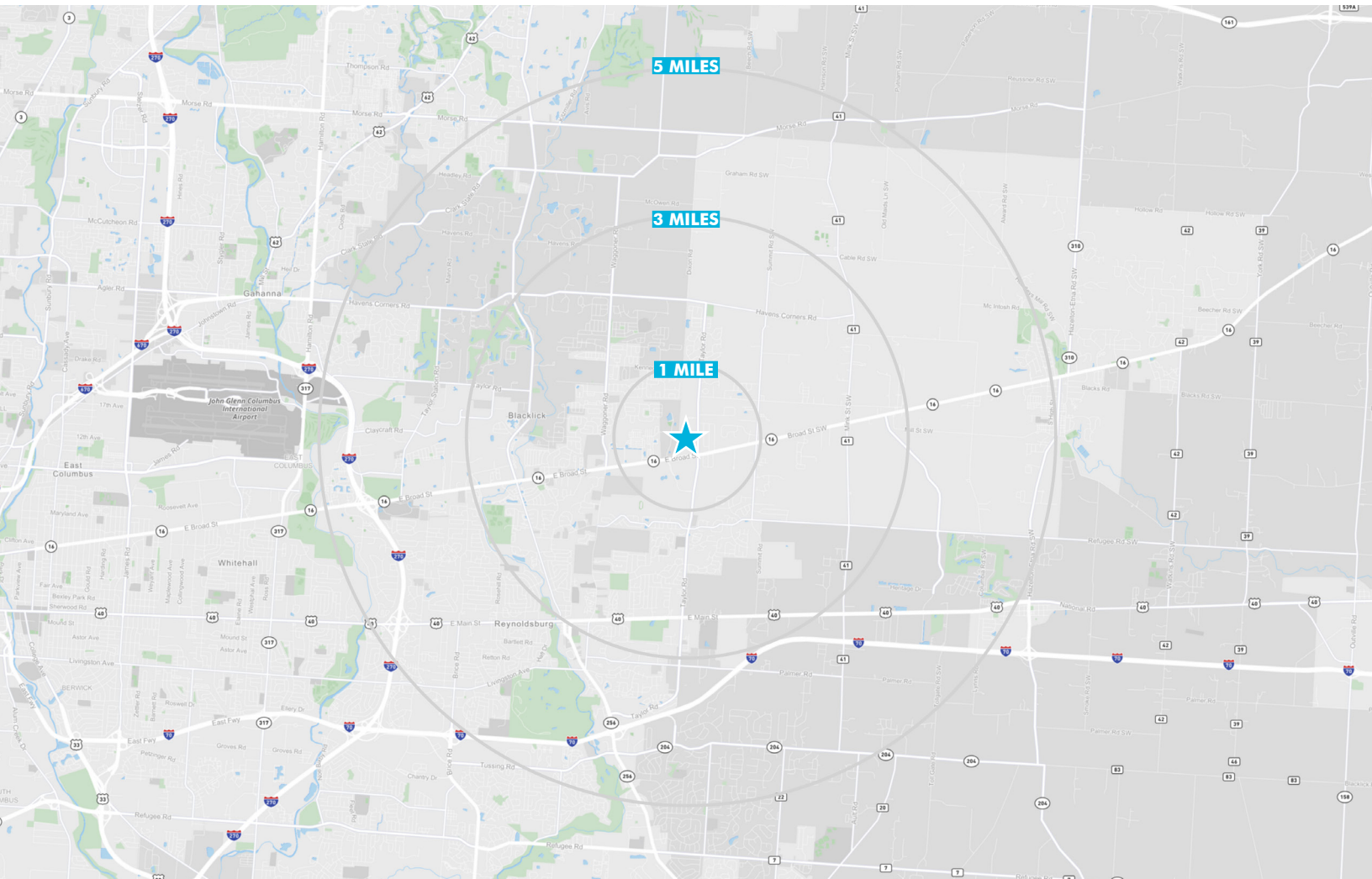


FOR SALE



AREA DEMOGRAPHICS

	1 MILE	3 MILES	5 MILES
POPULATION			
2020	7,174	54,352	119,843
2025	7,612	57,366	125,842
HOUSEHOLDS			
2020	3,059	21,026	47,712
2025	3,231	22,130	49,955
HOUSEHOLD INCOME			
	\$91,537	\$95,445	\$93,102
PLACE OF WORK			
Businesses	187	951	3,210
Employees	5,040	16,168	45,843





© 2020 CBRE, Inc. All rights reserved. This information has been obtained from sources believed reliable, but has not been verified for accuracy or completeness. You should conduct a careful, independent investigation of the property and verify all information. Any reliance on this information is solely at your own risk. CBRE and the CBRE logo are service marks of CBRE, Inc. All other marks displayed on this document are the property of their respective owners, and the use of such logos does not imply any affiliation with or endorsement of CBRE. Photos herein are the property of their respective owners. Use of these images without the express written consent of the owner is prohibited.

CONTACT US

JOHN HALL

Senior Vice President
+1 614 430 5081
john.hall@cbre.com

DON MATSANOFF

First Vice President
+1 614 430 5000
don.matsanoff@cbre.com

AJ NORMAN

Associate
+1 614 430 5025
a.j.norman@cbre.com

CBRE

200 Civic Center Drive
Columbus, OH 43215
+1 614 224 1492