

255 E. Lake Street Bloomington, Illinois



Christine Simek
630.473.5070

christine@xroadsadvisors.com

Introduction



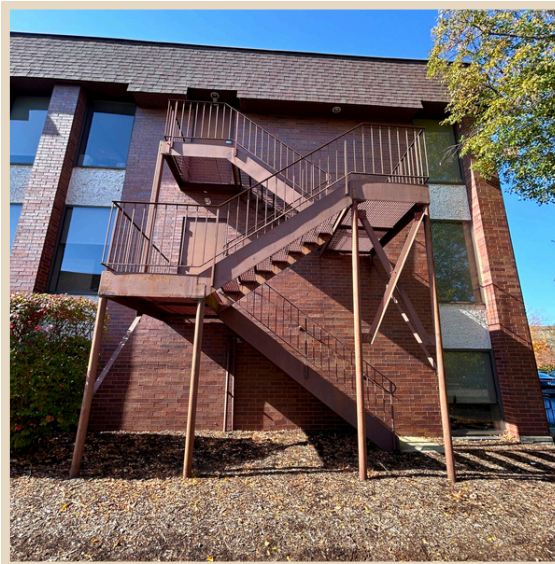
Free-standing office building totaling 31,146 rentable square feet on 75,254 square feet of land. Excellent location in the suburbs and away from the city life. Located on the North Side of Lake Street, just west of I-355 with traffic light access (East/West).

Building Features

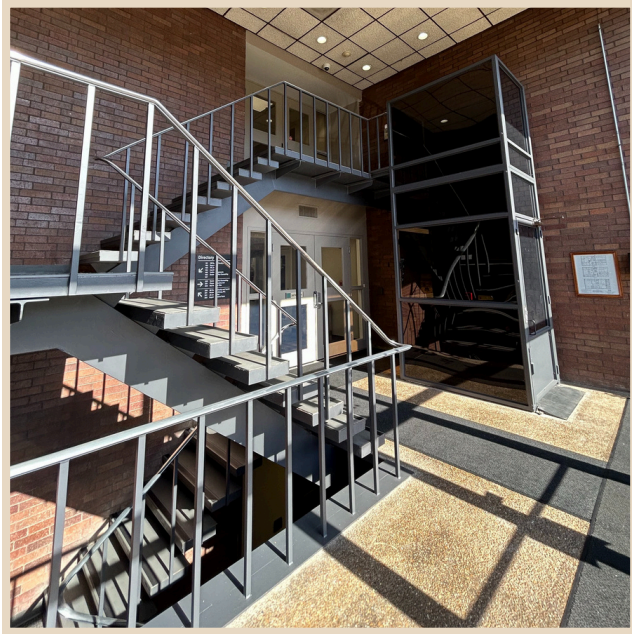


- Suite 102: 2,610 SF
 - Private entrance, open area, two private offices, and breakroom
- Suite 107: 1,304 SF
 - Large open area, freshly painted and new carpet tiles recently installed.
- Recently renovated interior
- Private entrance, open area, two private offices, and breakroom
- Ideal for call center
- Monument signage
- Professionally managed and maintained building and grounds
- Upgraded lighting with LED panels. Smart technology allows you to control from your phone making it very efficient

Exterior Photos



Lobby/Waiting Room Photos



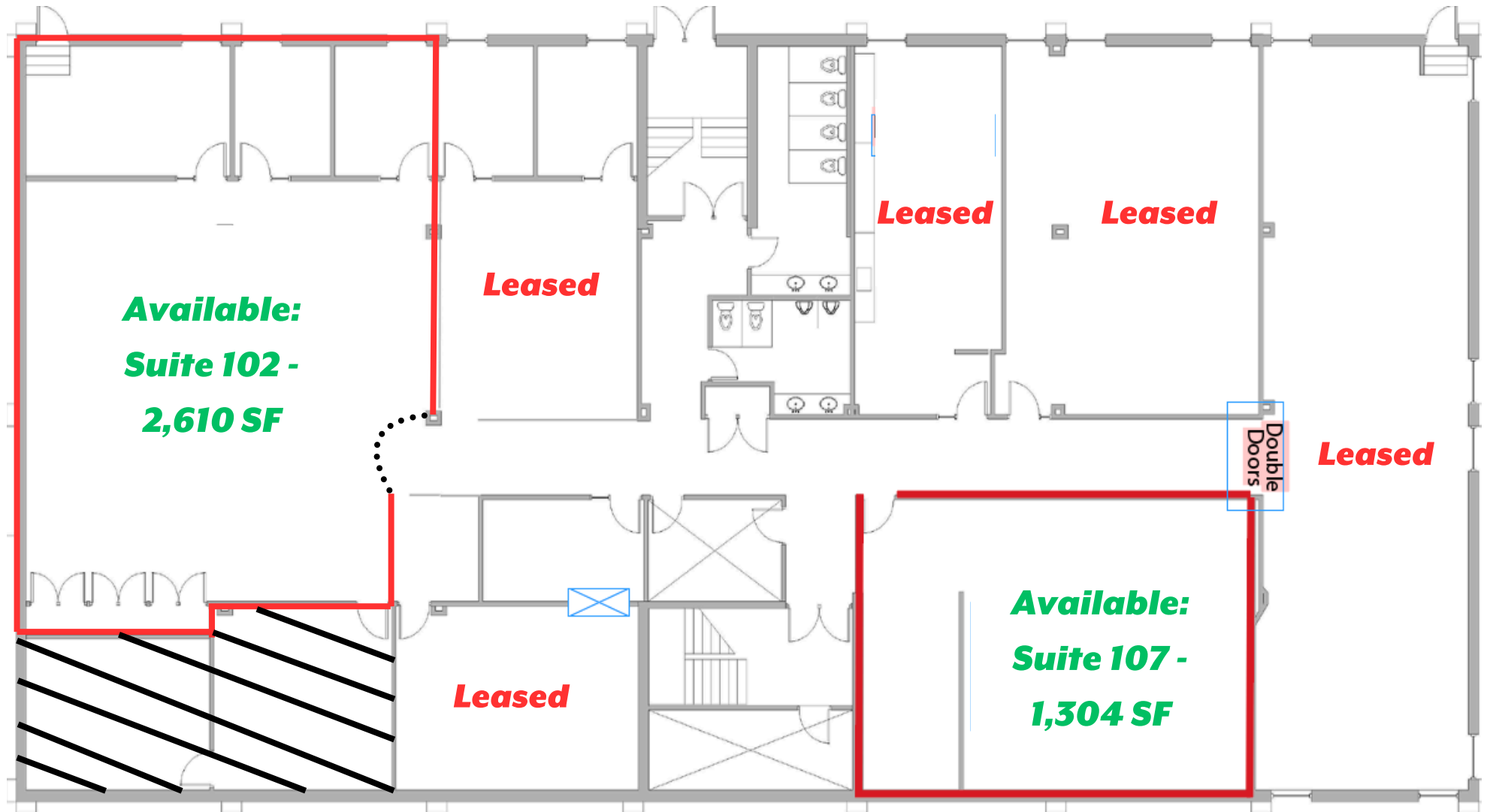
Interior Photos: Suite 102



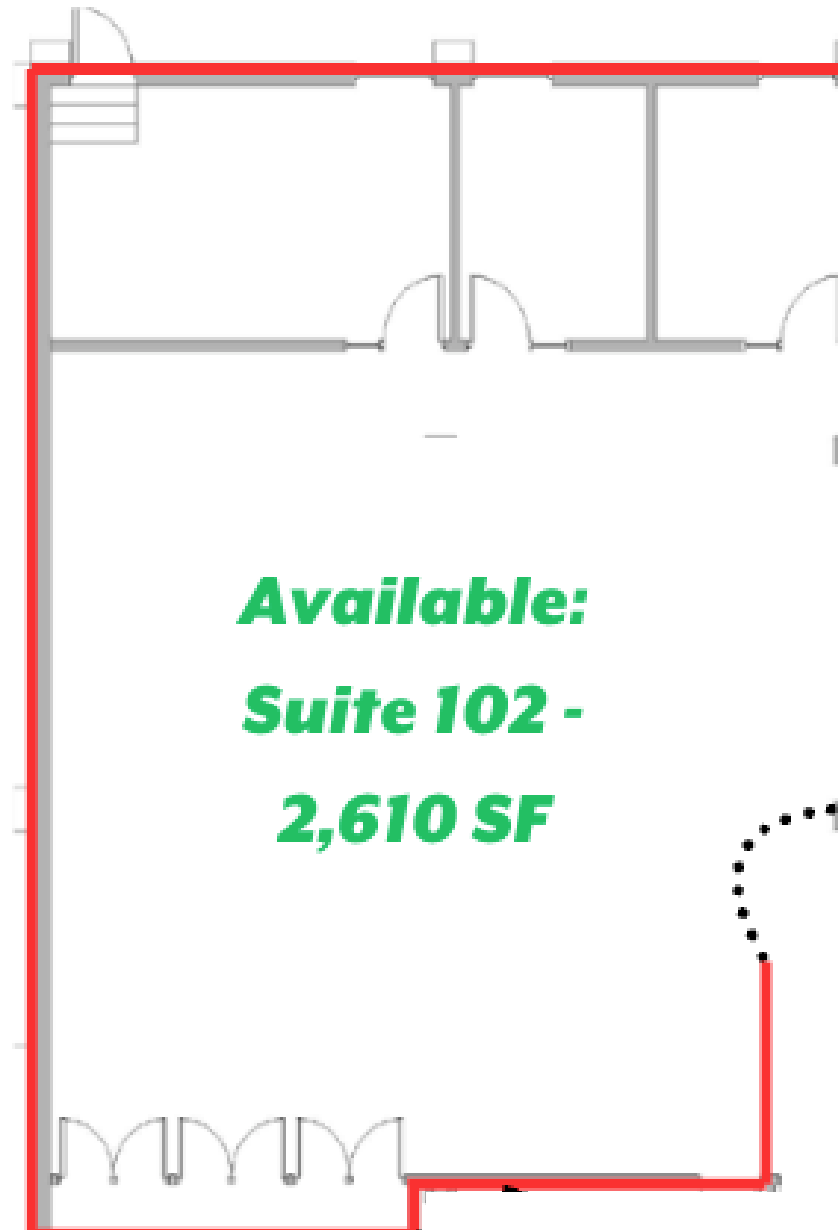
Interior Photos: Suite 107



Floor Plan: 1st Floor



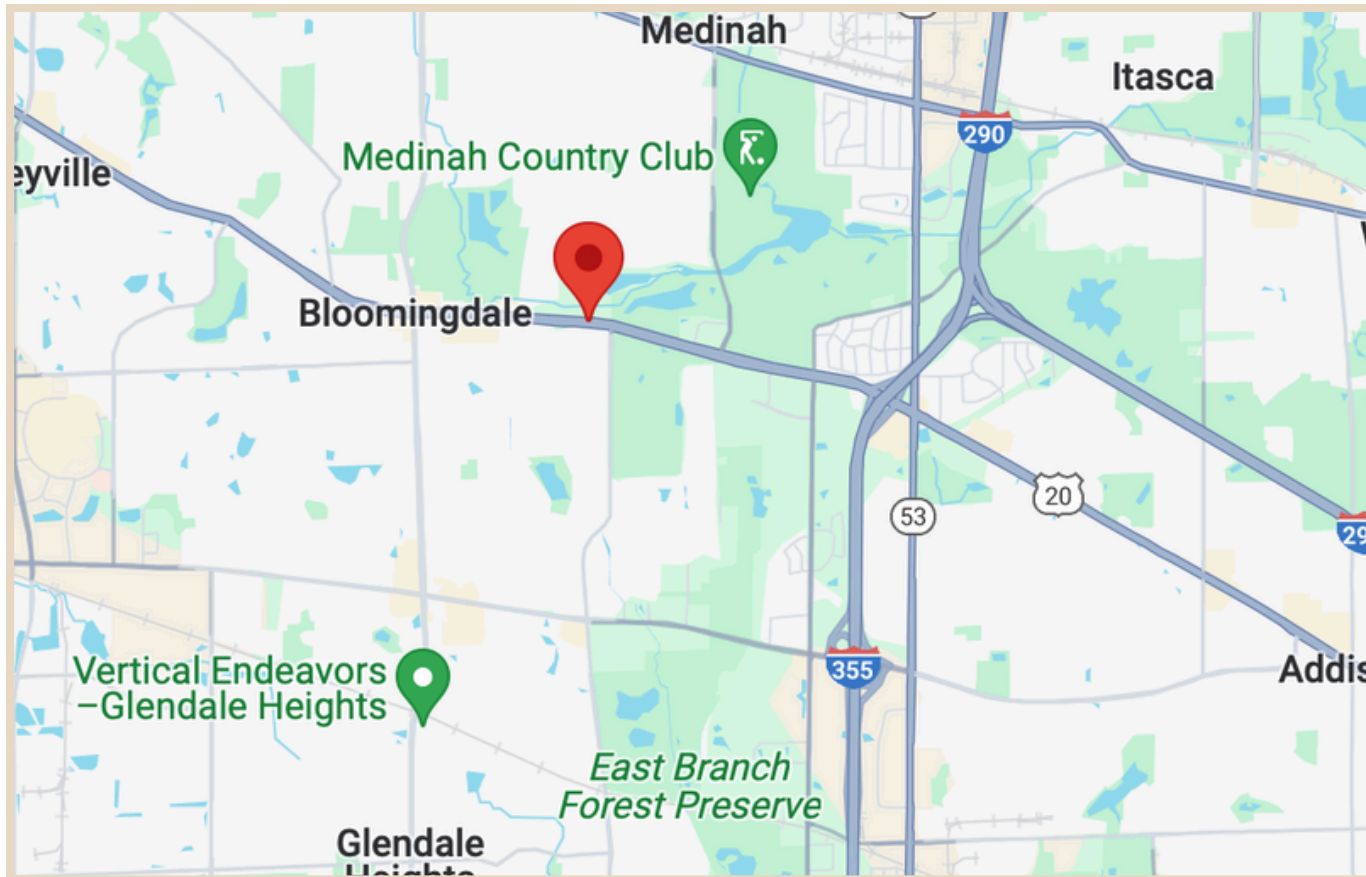
Floor Plan - Suite 102



Floor Plan - Suite 107



Location



Located on the
North side
of Lake Street
west of I-355

255 E. Lake Street
Bloomington, Illinois



Christine Simek
630.473.5070

christine@xroadsadvisors.com