



# REDEVELOPMENT OPP. W/PARKING

City of York | York County

250 E. Market St. York, PA 17403

## FOR SALE

Well-maintained, 50,731 SF  
redevelopment opportunity  
with on-site parking in  
Downtown York.



**Ben Chiaro, CCIM**  
Cell: 717.683.3316  
[ben@truecommercial.com](mailto:ben@truecommercial.com)

**David Albright**  
Cell: 717.870.3097  
[david@truecommercial.com](mailto:david@truecommercial.com)

**For More Information Call: 717.850.TRUE (8783) | 1018 N. Christian St. Lancaster, PA 17602 | [www.TRUECommercial.com](http://www.TRUECommercial.com)**

The information has been secured from sources we believe to be reliable. TRUE Commercial Real Estate LLC makes no representations or warranties, express or implied, as to the accuracy of the information. References to square footage or age are approximate. Buyer must verify the information and bears all risk for any inaccuracies.



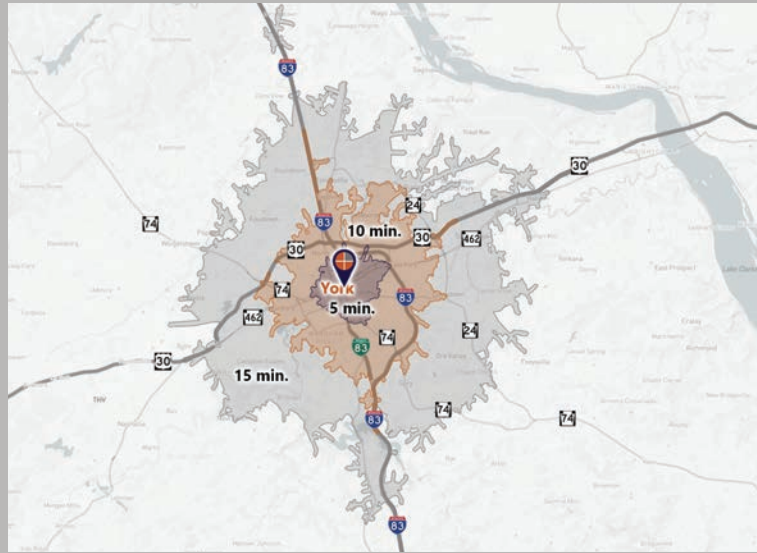


# REDEVELOPMENT OPPORTUNITY W/PARKING

## DEMOGRAPHICS

VARIABLE	250 E. Market St. York, PA 17403		
Travel Distance from Site	5 minutes	10 minutes	15 minutes
Total Population	31,204	85,885	158,993
Population Density (Per Sq. Mile)	8,658.3	3,574.9	1,825.9
Total Daytime Population	36,792	107,337	188,479
Total Households	12,328	33,647	62,129
Per Capita Income	\$24,138	\$32,308	\$39,378
Average Household Income	\$61,101	\$81,529	\$99,944
Average Disposable Income	\$49,471	\$63,983	\$76,342
Total (SIC01-99) Businesses	1,543	3,977	6,478
Total (SIC01-99) Employees	21,161	59,368	104,037
Total Housing Units	13,757	36,526	66,177
Renter Occupied Housing Units	8,099	16,081	22,680
Owner Occupied Housing Units	4,229	17,566	39,449
Housing Afford-ability Index	148	104	99

## Travel Distance from Site



## PROPERTY & MARKET OVERVIEW

Introducing an exceptional redevelopment opportunity for the former York County Historical Society Museum situated in Downtown York. The property, encompassing over 50,000 SF, has been meticulously maintained and offers large, open spaces complemented by on-site parking for up to 59 vehicles. Its striking main entrance lobby showcases vaulted two-story ceilings, a wrap-around balcony, skylights, checkerboard tiled flooring, and provides access to a grand staircase and passenger elevator. Adjacent to the lobby, there is a reception/event space with a kitchen to serve events and a recessed, fenced, and gated courtyard along E. Market St. The remaining space around the main lobby comprises two retail spaces, restrooms, and 1,636 SF of offices on the second floor. The rear sections of the first and second floors house the collections/library spaces, which are predominantly open areas. Additionally, there is a 1,819 SF workshop with a drive-in door at the rear of the first floor.

The property is conveniently located two blocks east of Continental Square, providing excellent pedestrian access to all of Downtown York's amenities. It is an ideal candidate for conversion into multi-family housing, as well as for institutional or educational purposes.

## PROPERTY DETAILS

- Total Building Size:.....50,731± SF
- Sale Price: .....\$1,500,000
- Zoning: ..... Urban Neighborhood 2 with HARB Overlay
- Land/Lot Size: ..... 1.1405 acres
- Date Available:..... Settlement
- Parking:.....Paved, On-Site, 59 spaces
- Year Built:..... 1920
- Annual Taxes: ..... \$106,532.38
- Elevator: ..... Yes - One Passenger (4,000 lbs)
- Roof Type: .....Slate, Rubber, Ballasted
- Construction:.....Masonry, Steel
- Ceiling & Clear Height:..... Varies
- Drive-In Doors:..... One (1)
- Heating:..... Gas FWA
- Cooling:.....Central Air
- Electric: ..... Met-Ed
- Water/Sewer:..... Public

## TRAFFIC COUNTS

- E. Market St./PA Route 462:.....8,051 VPD
- S. Queen St./PA Route 74:.....7,549 VPD

For More Information Call: 717.850.TRUE (8783) | [www.TRUECommercial.com](http://www.TRUECommercial.com)



# HISTORICAL SOCIETY FLOOR PLAN | FIRST FLOOR



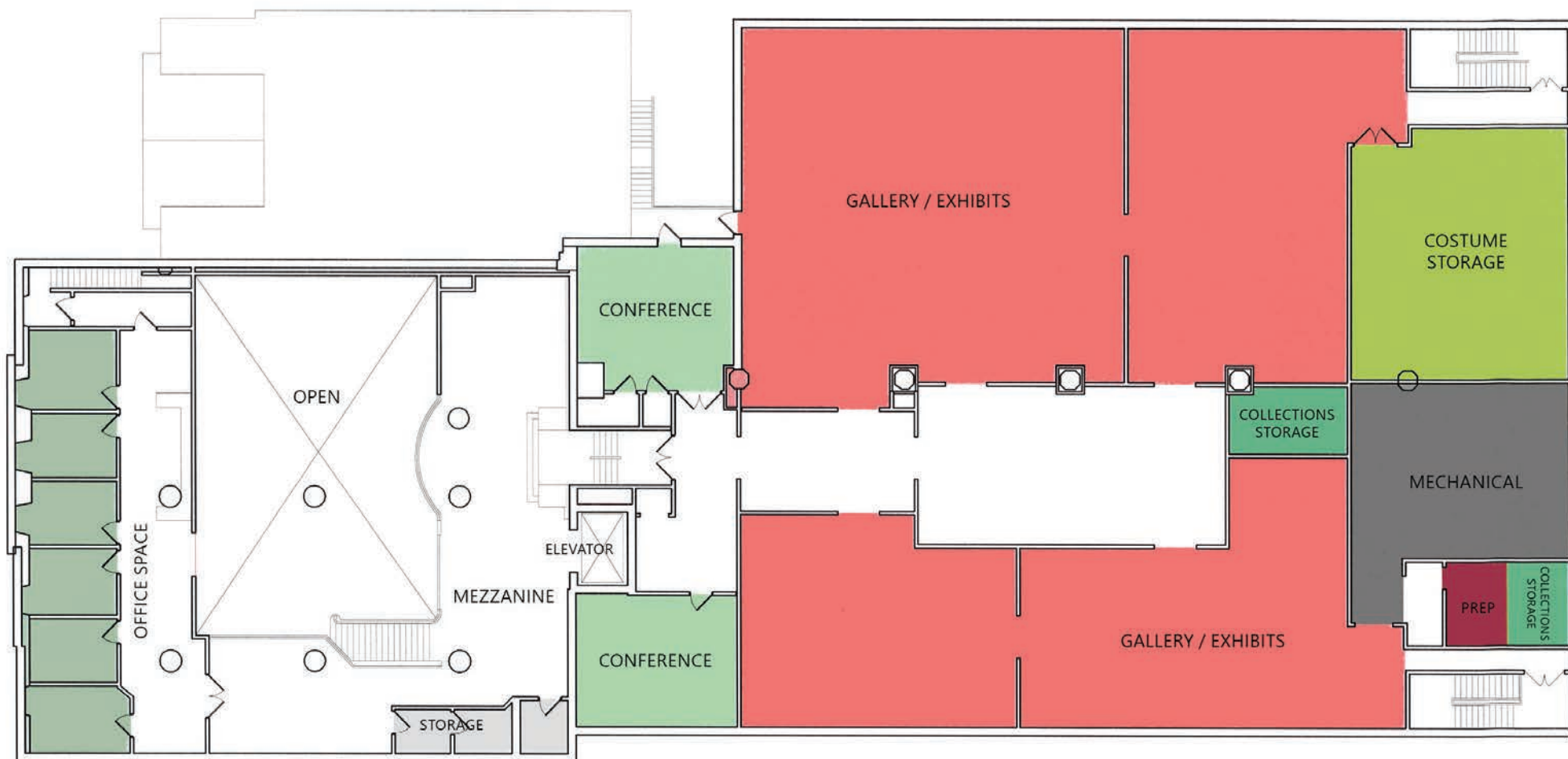
## FIRST FLOOR: 22,087 SF

Retail	819 SF	Conference	1,636 SF	Lobby / Vestibules	6,714 SF
Retail Storage	429 SF	Storage	233 SF	Restrooms	323 SF
Kitchen	321 SF	Pantry	86 SF	Janitor	158 SF
Gallery / Exhibits	5,524 SF	Library	3,793 SF	Workshop / Storage	2,051 SF

**For More Information Call: 717.850.TRUE (8783) | [www.TRUECommercial.com](http://www.TRUECommercial.com)**



# HISTORICAL SOCIETY FLOOR PLAN | SECOND FLOOR



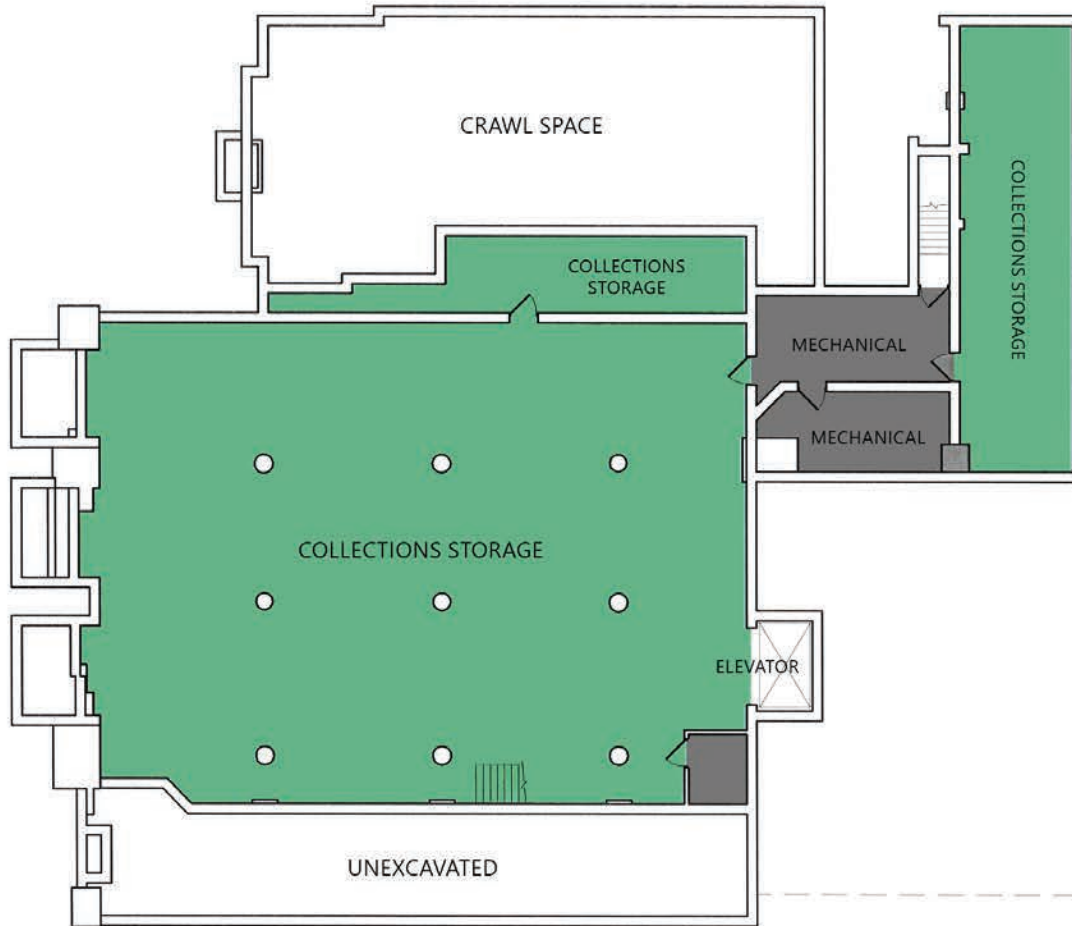
## SECOND FLOOR: 22,048 SF

Office Space	1,636 SF	Conference	872 SF	Mezzanine / Common	9,826 SF
Storage	154 SF	Costume Storage	1,104 SF	Collections Storage	266 SF
Gallery / Exhibits	7,233 SF	Mechanical	851 SF	Prep	106 SF

For More Information Call: 717.850.TRUE (8783) | [www.TRUECommercial.com](http://www.TRUECommercial.com)

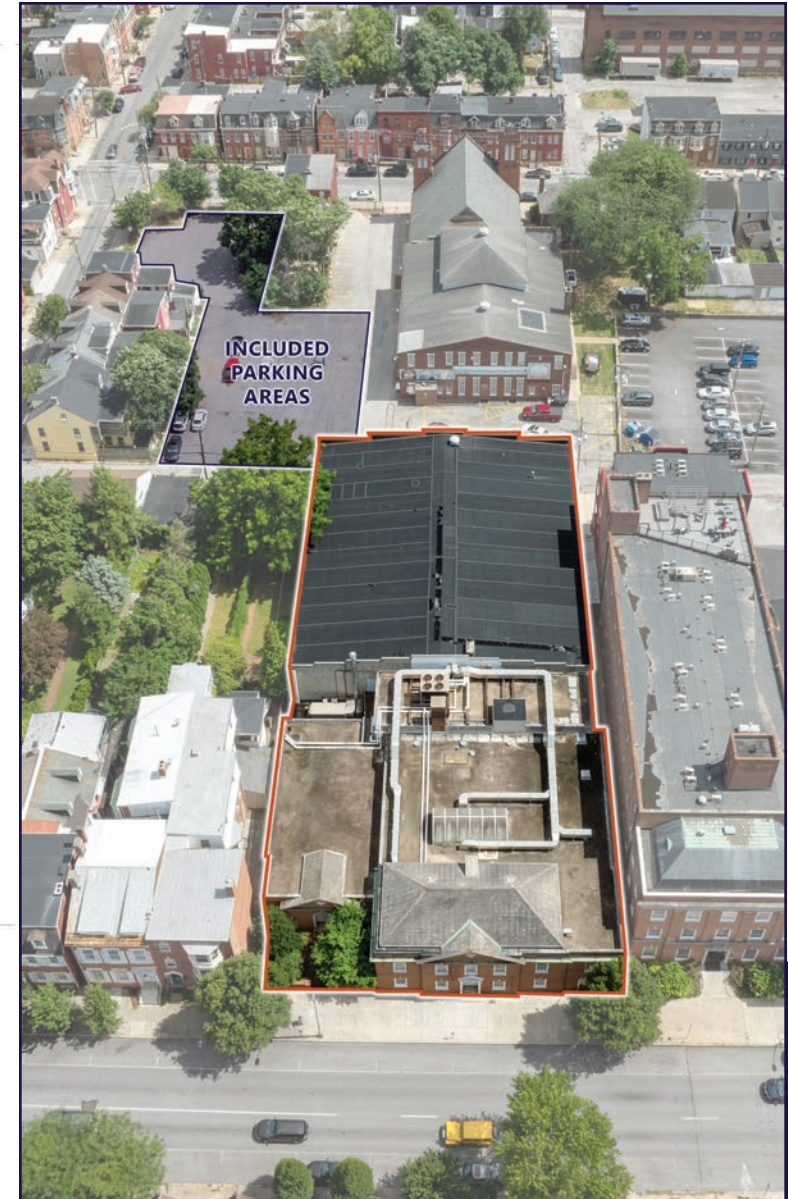


# HISTORICAL SOCIETY FLOOR PLAN | BASEMENT



## BASEMENT: 6,596 SF

Collection Storage	5,196 SF	Mechanical	480 SF	Crawl Space	920 SF
--------------------	----------	------------	--------	-------------	--------



For More Information Call: 717.850.TRUE (8783) | [www.TRUECommercial.com](http://www.TRUECommercial.com)

The information has been secured from sources we believe to be reliable. TRUE Commercial Real Estate LLC makes no representations or warranties, express or implied, as to the accuracy of the information. References to square footage or age are approximate. Buyer must verify the information and bears all risk for any inaccuracies.



# DOWNTOWN YORK AREA MAP

## Visit Downtown York

### DRINKING & DINING

1. Central Market
2. White Rose Bar & Grill
3. Roost Uncommon Kitchen
4. Marcello's Pizza
5. Liquid Hero Brewery
6. McDonald's
7. Catalina's Cafe
8. Pizza Boli's York
9. Alleys
10. Mudhook Brewing Co.
11. Archetype Pizza
12. Collusion Tap Works
13. Prince St. Cafe
14. Gift Horse Brewing Co.
15. Bloom Kitchen & Bar
16. Picalonga Sabor Tropical
17. Cupcakes & More
18. The Green Bean Roasting Co.
19. Skillet2Plate Soul Bistro
20. The Handsome Cab
21. World Grills
22. Gather 256
23. Holy Hound Taproom
24. Liquid Hero Brewery
25. First Capital Dispensing Co.
26. Tutoni's Restaurant
27. Granfaloon's Tavern
28. Chinatown Express
29. Subway
30. Rockfish Public House
31. LettUsKnow
32. Levant Mediterranean Cuisine
33. Fig & Barrel
34. Hamir's Indian Fusion
35. Iron Horse York
36. Revival Social Club
37. Stage Deli
38. George Street Brewing Co. Bistro & Bar

### ATTRACTIONS

39. Marketview Arts
40. Valencia Ballroom
41. Timeline Arcade
42. York Revolution Stadium
43. The Bond
44. Appell Performing Arts Center
45. York County History Center
46. Royal Square Mural Park
47. Heritage Rail Trail

### SHOPPING

48. The Glass Turtle Studio
49. Ewe And Me
50. House of Flowers York
51. DTLR
52. C-town Supermarket
53. Sky Optics
54. New Hub Store
55. Casta Cigars Co.
56. Family Dollar
57. Lilybird & Company
58. Camera Center of York
59. Revolt Style Studio
60. Pippi's Pen Shoppe
61. Penn Market
62. Sunrise Soap Co.
63. Central Market
64. House of Yoga
65. My Girlfriend's Wardrobe
66. Charles A. Schaefer Flowers
67. The Garden of Edy
68. Noel's Rock Shop

### LODGING

69. Red Roof Inn
70. The Yorktowne Hotel - a Tapestry Collection by Hilton (Now Open)
71. Grace Manor Bed & Breakfast

### FITNESS

72. York YMCA
73. CrossFit York



### LEGEND

- A Northwest Triangle Redevelopment
- B York County Judicial Center
- C Continental Square

- P1 King St. Garage
- P2 Market St. Garage
- P3 Philadelphia St. Parking
- P4 Central Market Deck

### NORTHWEST TRIANGLE



A 4 acre mixed use redevelopment site that will feature a mix of 70,000 SF of retail & restaurant space, 300 market rate apartments, and over 50,000 SF of office, flex, & conference space.



### YORK JUDICIAL CENTER

One of the largest traffic generators in the city, with 680 employees and drawing 2,450 visitors per day from all over York County.



### MARKET DISTRICT

Anchored by Central Market, and contains Restaurant Row, the Market District centers around the blocks of N. & S. Beaver St., W. Philadelphia St., N. George St., and W. Market St. Shop, dine and be entertained.



### CONTINENTAL SQUARE

The downtown crossroads at George & Market Streets has seen a host of new activity recently. Decorative lighting will highlight the buildings. Home to many businesses, office tenants, and new market-rate apartments.



Home to artists' collectives, galleries, eclectic retail, a Mural Walk featuring over a dozen vibrant creations by local artists, Royal Square is an emerging arts and shopping destination in Downtown York.



Located just across the Codorus Creek, WeCo is a diverse business district with restaurants, shopping, entertainment, community activities and local businesses.

For More Information Call: 717.850.TRUE (8783) | [www.TRUECommercial.com](http://www.TRUECommercial.com)





# INTERIOR PHOTOS



For More Information Call: 717.850.TRUE (8783) | [www.TRUECommercial.com](http://www.TRUECommercial.com)

The information has been secured from sources we believe to be reliable. TRUE Commercial Real Estate LLC makes no representations or warranties, express or implied, as to the accuracy of the information. References to square footage or age are approximate. Buyer must verify the information and bears all risk for any inaccuracies.





# AERIAL DRONE & BUILDING PHOTOS



For More Information Call: 717.850.TRUE (8783) | [www.TRUECommercial.com](http://www.TRUECommercial.com)

The information has been secured from sources we believe to be reliable. TRUE Commercial Real Estate LLC makes no representations or warranties, express or implied, as to the accuracy of the information. References to square footage or age are approximate. Buyer must verify the information and bears all risk for any inaccuracies.





# AERIAL DRONE PHOTO



For More Information Call: 717.850.TRUE (8783) | [www.TRUECommercial.com](http://www.TRUECommercial.com)

The information has been secured from sources we believe to be reliable. TRUE Commercial Real Estate LLC makes no representations or warranties, express or implied, as to the accuracy of the information. References to square footage or age are approximate. Buyer must verify the information and bears all risk for any inaccuracies.