

FOR LEASE

PROMENDE PARK MEDICAL & PROFESSIONAL CENTER

3915 CASCADE ROAD, ATLANTA, GA 30331

Promenade Park represents the only class A office space in the immediate area. Tailored for medical and professional tenants, Promenade Park offers a generous build out allowance for medical tenants. There are multiple successful healthcare practices located in the building including Family Medicine, Internal Medicine, OB/GYN, Cardiology and Psychologists. Promenade Park offers a professional setting with full time day porter, local leasing, management team and office space up to 2,848 sf.

RYAN BLACK

770.988.5525

rblack@perimetercre.com

PROPERTY SUMMARY



PROPERTY DESCRIPTION

Just off of I-285 on Cascade Road, Promenade Park represents the only class A office space in the immediate area. Tailored for medical and professional practices, Promenade Park offers a generous build out allowance with long term medical leases. Successful healthcare practices already located in the building include Family Medicine, Internal medicine, OB/GYN, Cardiology and Psychologists. PPK offers professional setting with a full time day porter, local leasing and management team and office space available up to 2,848 SF.

- Medical Offices 1044-5000 SF Available

FOR LEASE

PROMENDE PARK MEDICAL & PROFESSIONAL CENTER

OFFERING SUMMARY

Lease Rate:	Negotiable
Available SF:	357 SF up to 2,848 SF
Lease Structure:	Full Service
Building Size:	49,386 SF

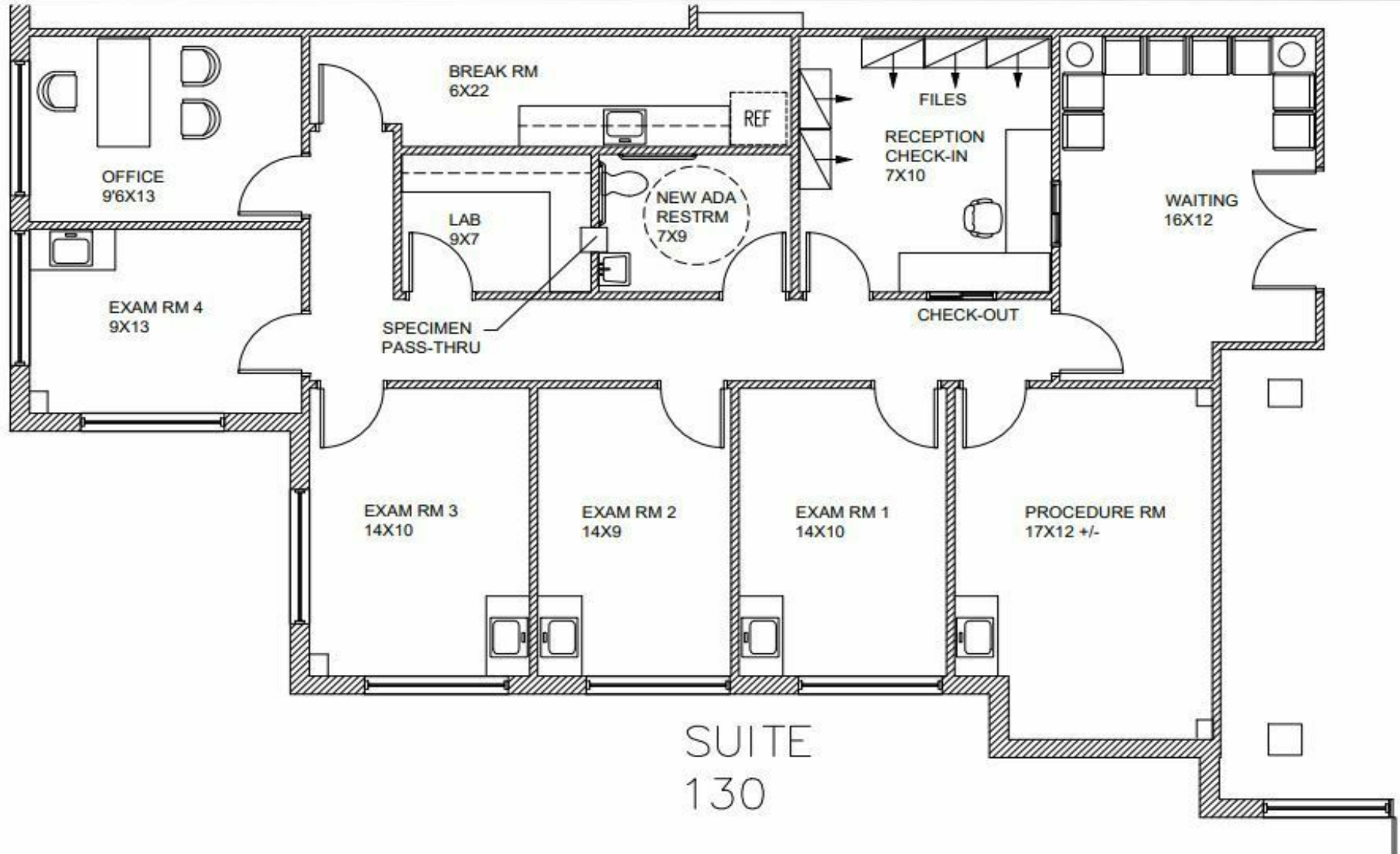
DEMOGRAPHICS	1 MILE	5 MILES	10 MILES
Total Households	2,097	50,738	225,763
Total Population	5,334	131,022	577,554
Average HH Income	\$57,860	\$50,053	\$61,816

RYAN BLACK

770.988.5525

rblack@perimetercre.com

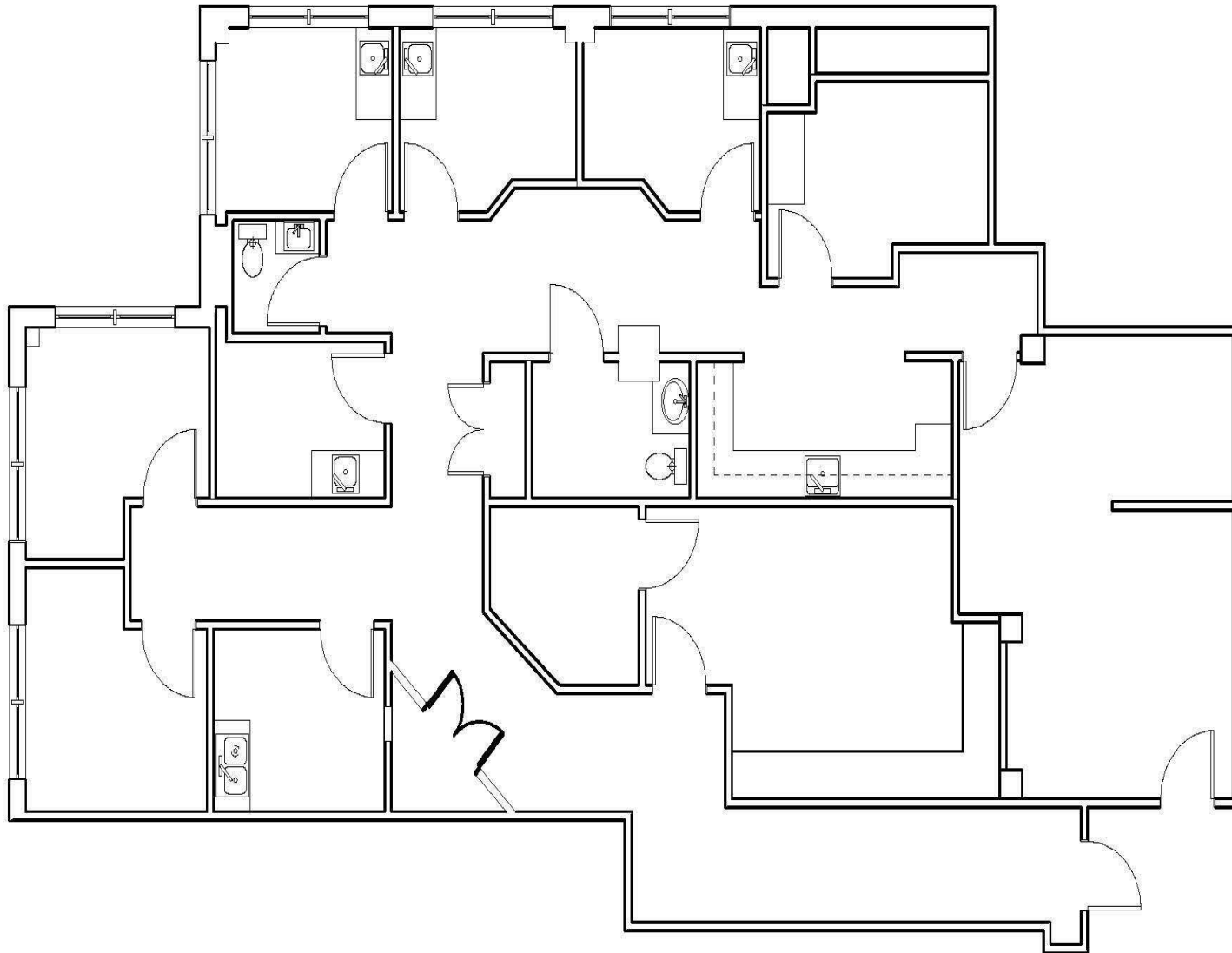
SUITE 130- 2,185 SF



FOR LEASE
PROMENDE PARK MEDICAL & PROFESSIONAL CENTER

RYAN BLACK
770.988.5525
rblack@perimetercre.com

SUITE 310 - 2,848 SF



FOR LEASE

PROMENDE PARK MEDICAL & PROFESSIONAL CENTER

RYAN BLACK

770.988.5525

rblack@perimetercre.com

ADDITIONAL PHOTOS



FOR LEASE
PROMENADE PARK MEDICAL & PROFESSIONAL CENTER

RYAN BLACK
770.988.5525
rblack@perimetercre.com

LOCATION



FOR LEASE

PROMENDE PARK MEDICAL & PROFESSIONAL CENTER

RYAN BLACK

770.988.5525

rblack@perimetercre.com

RYAN BLACK



RYAN BLACK

rblack@perimetercre.com

Direct: 770.988.5525 | **Cell:** 404.583.7568

PROFESSIONAL BACKGROUND

Ryan co-founded Perimeter Commercial Real Estate in 2014 and is responsible for the company's day to day operations. Ryan Black specializes in Landlord representation and repositioning of distressed assets of office/retail properties. He brings over 18 years of real estate, marketing and finance experience to Perimeter.

Before starting Perimeter Commercial Real Estate, Ryan worked for several national companies providing financing for various real estate products. He worked for Bank of America as a Regional Sales Manager responsible for production in a six state area and was recognized as a top producer. With his expertise in the real estate industry and sales experience, Ryan can help you whether you are looking to buy, sell or lease commercial real estate.

Ryan earned a bachelor's degree from the University of Colorado Boulder. He currently lives in Marietta with his wife and three children.

PERIMETER COMMERCIAL REAL ESTATE

2400 Herodian Way Suite 205
Smyrna, GA 30080
770.988.5550

FOR LEASE

PROMENDE PARK MEDICAL & PROFESSIONAL CENTER

RYAN BLACK

770.988.5525

rblack@perimetercre.com