



14701 Philips Highway

Jacksonville, Florida 32256

Property Highlights

- Completed in 2018 with modern finishes
- Lease expiration in April 2033
- Abundant window lines surrounding the office
- Includes kitchenette and reception area
- Furniture available for use
- High ceilings for a spacious feel

Property Overview

Modern elegance with a 2018 build-out, featuring sleek finishes, abundant natural light, a kitchenette, reception area, and optional furnished space. With a lease term through April 2033, this long-term opportunity offers a polished, professional setting for your business.

Offering Summary

Lease Rate:	Negotiable
Building Size:	45,000 SF
Available SF:	15,000 - 45,000 SF
Lot Size:	3.14 Acres
Number of Stories:	3-stories
Year Built:	2018
Parking:	138 spaces

For More Information



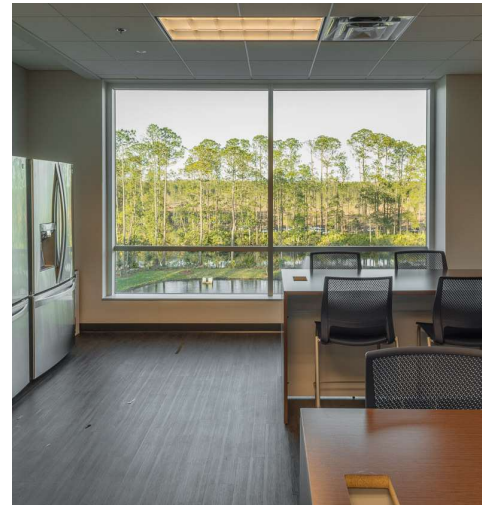
Patrick Carney

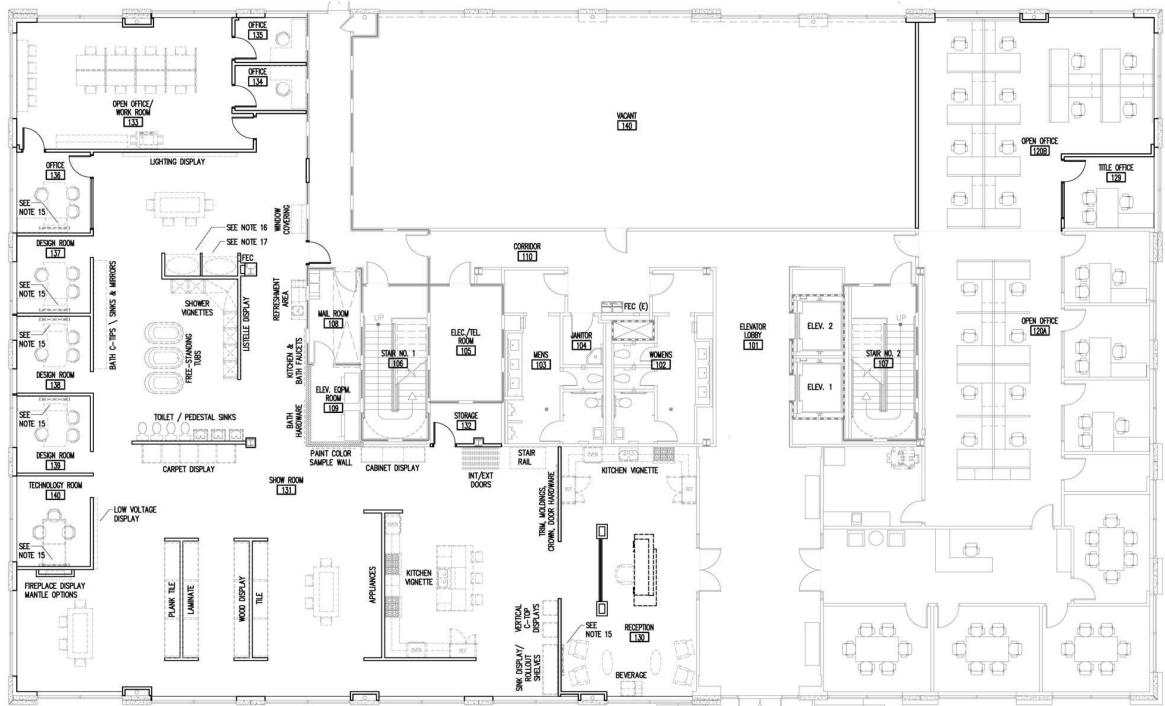
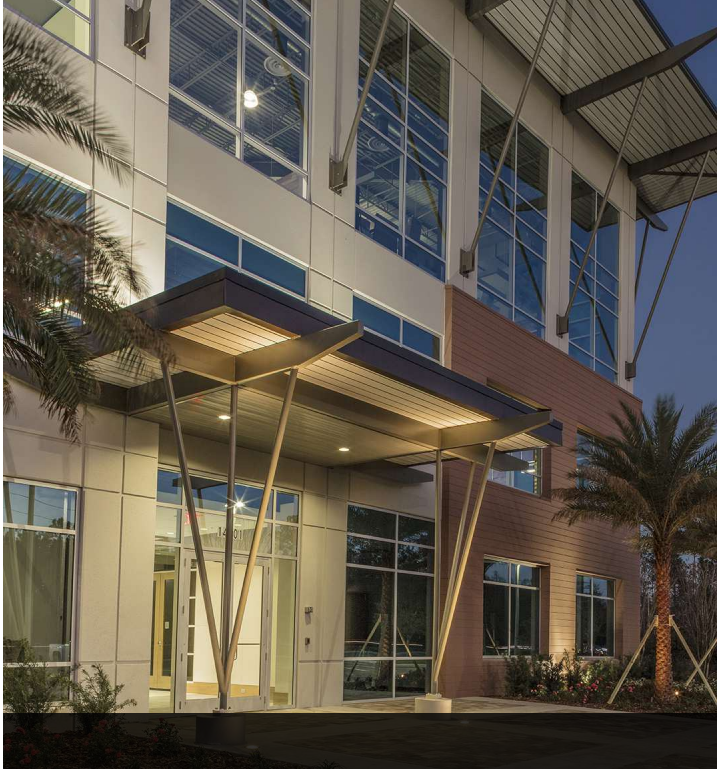
Vice President, Office Specialist
O: 904 404 4456 | C: 904 588 2508
pc@naihallmark.com



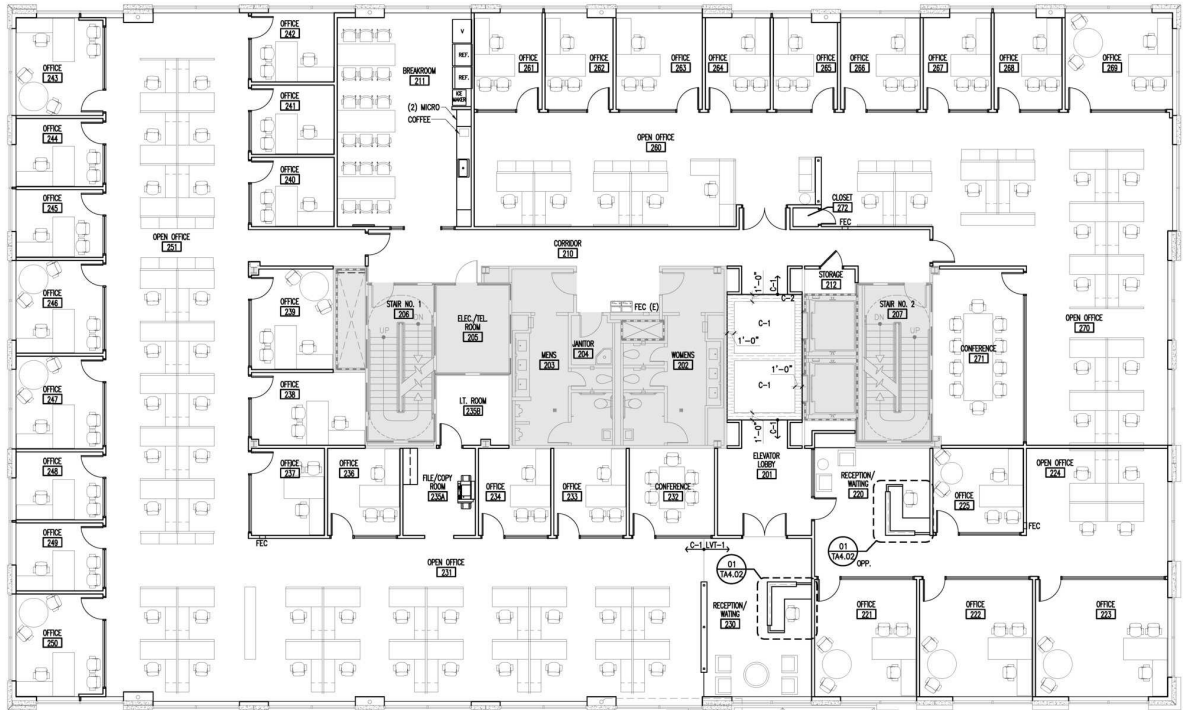
Sydney Miles

Associate
O: 904 363 9002 | C: 502 939 2900
sm@naihallmark.com

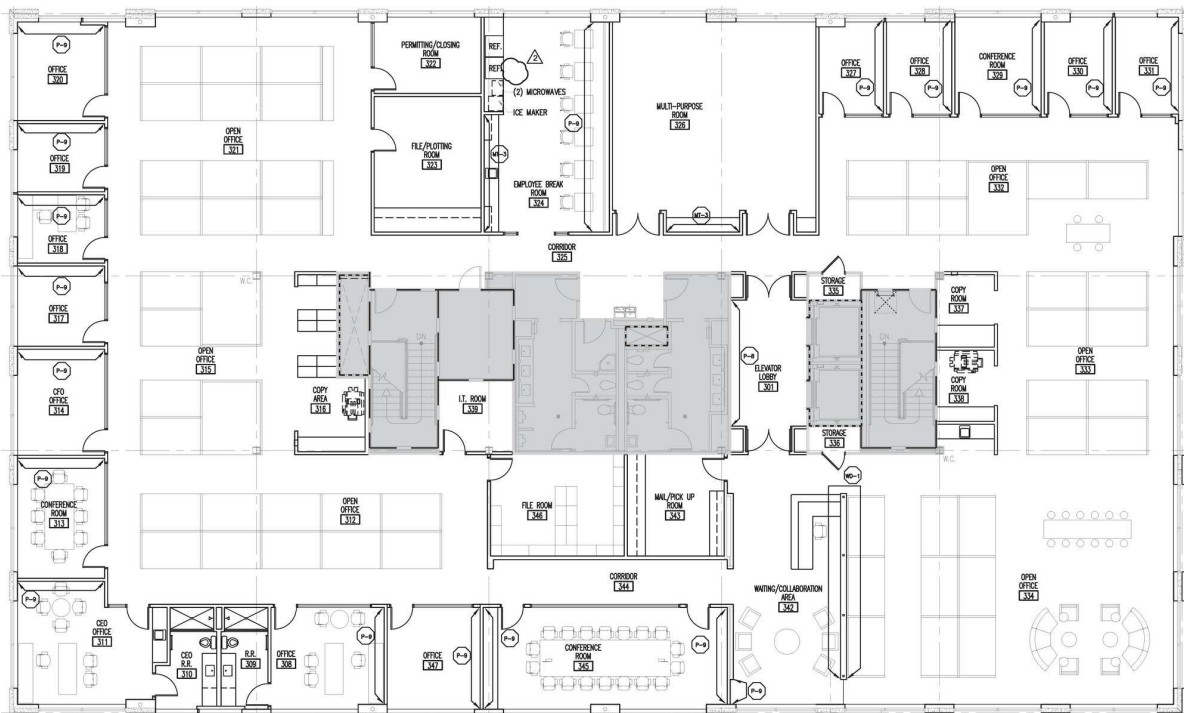




1st Floor Plan



2nd Floor Plan



3rd Floor Plan



