



OFFICE/MEDICAL SPACE FOR LEASE

887 E WILMETTE PALATINE, IL

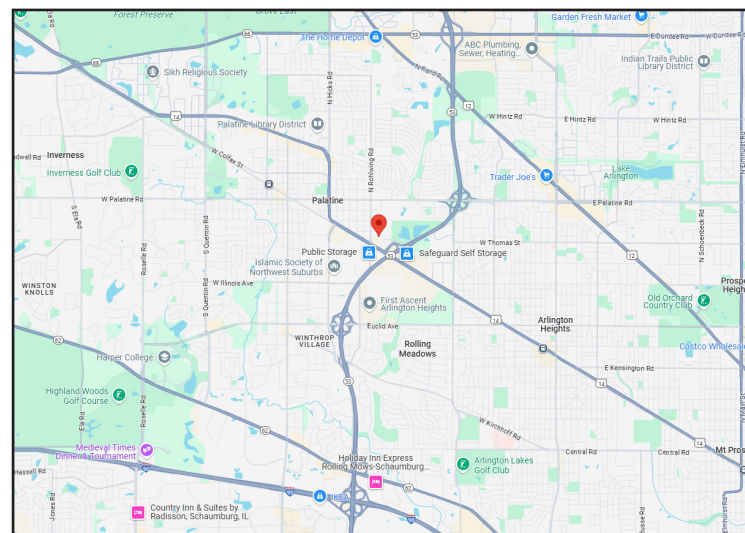


BUILDING FEATURES:

- 4,045 SF Office space (Former Pediatric Mental Health Therapy space)
- Located just off Rt. 14 & Route 53 full interchange
- Close proximity to shopping, hotels, and dining
- Single story office building with direct tenant access
- Comcast high-speed internet and cable available
- 4.14/1000 SF parking ratio
- Flexible Build-out and terms
- 24-hour tenant access & tenant controlled HVAC
- Private entrance & private restrooms
- Ideal for Office or Medical users
- **Rental Rate: \$16.50 Modified Gross**

AVAILABLE SPACE:

SUITE	SIZE (SF)	Available
887	4,045 SF	9/1/25 (Former Pediatric-Care Space)



FOR MORE INFORMATION:

RANDY OLCZYK
Direct: 847.246.9611
randy@chicagolandcommercial.com

TOM CALLAHAN
Direct: 847.246.9636
Tom@chicagolandcommercial.com



**Chicagoland
Commercial
REAL ESTATE**

4811 Emerson Ave Suite 112, Palatine, IL



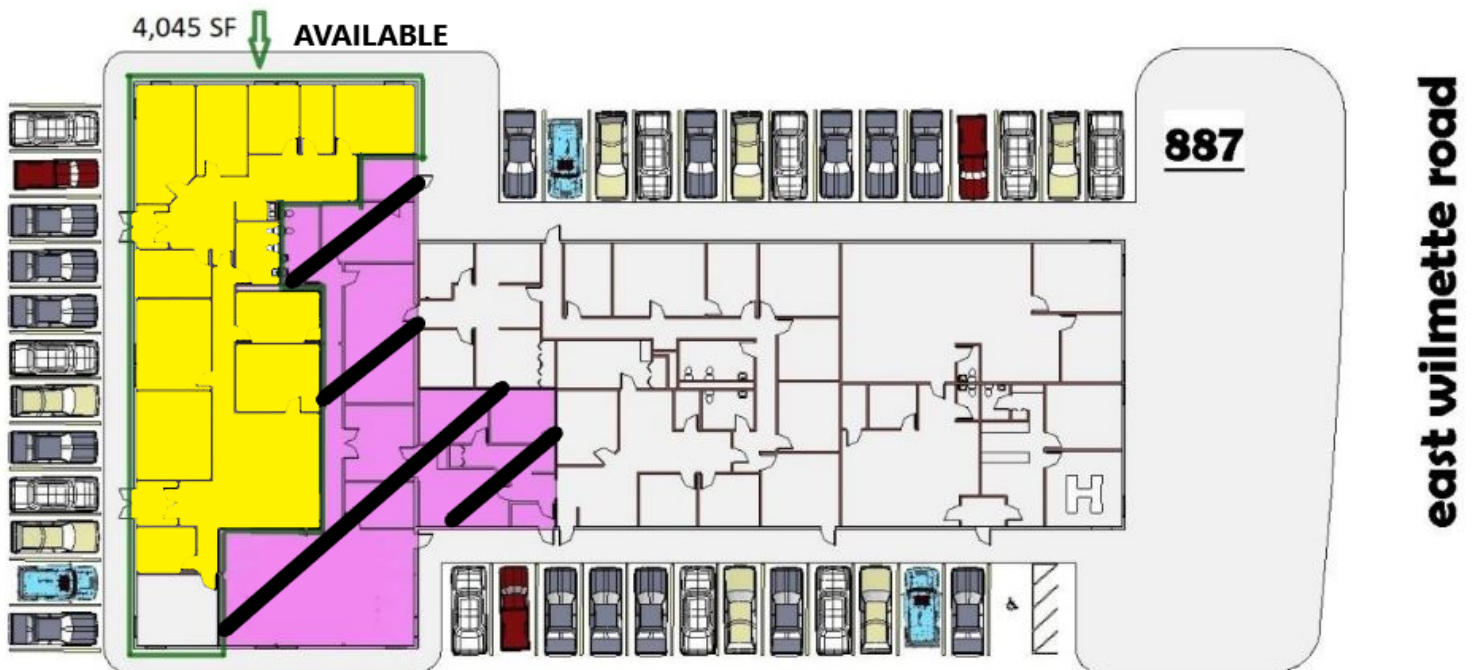
OFFICE/MEDICAL SPACE FOR LEASE

887 E WILMETTE PALATINE, IL

EXHIBIT A The Leased Premises

Leased Premises Outlined in Red

- Suite letters/labels on rendering do not correspond to actual suite addresses and are for visual reference only

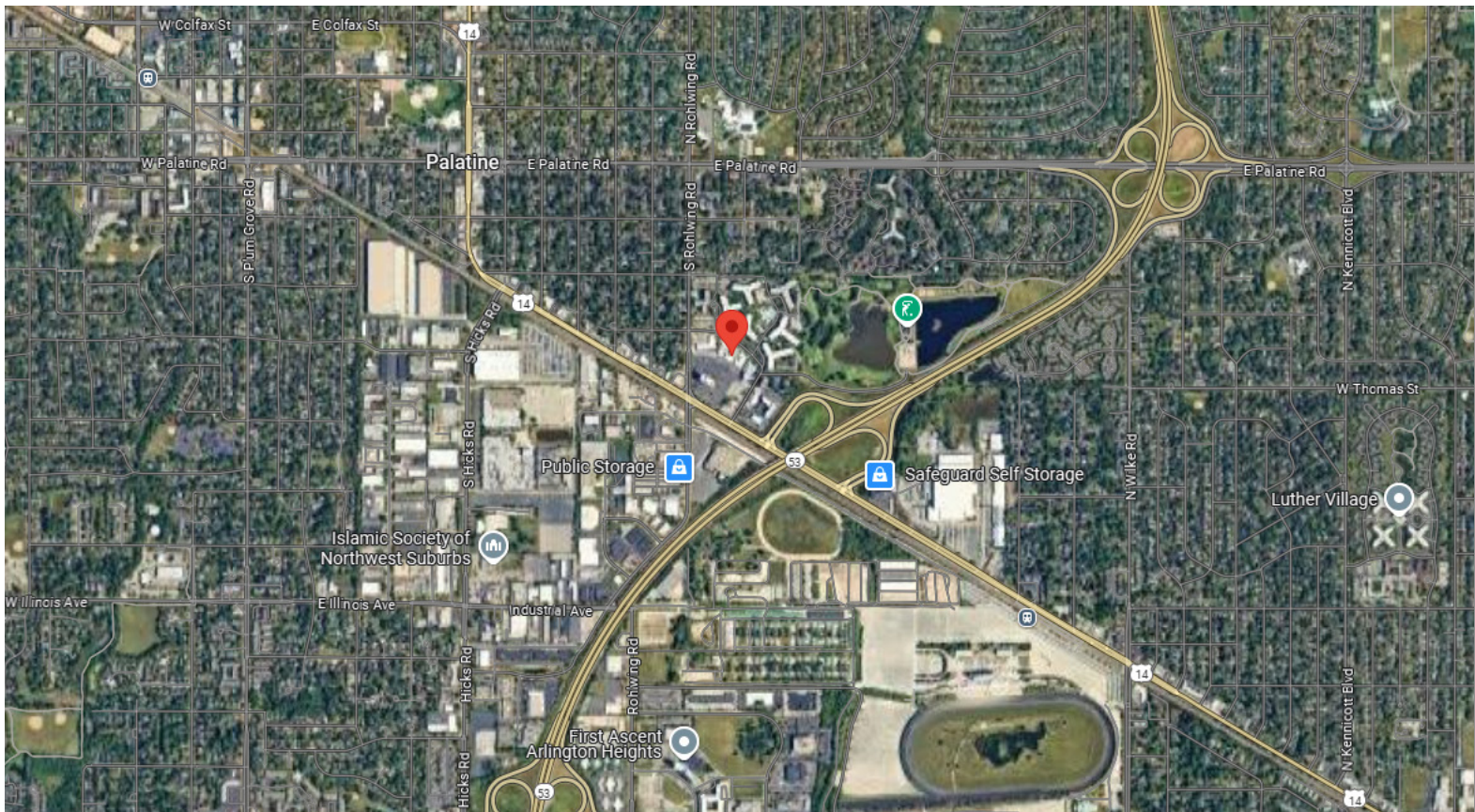
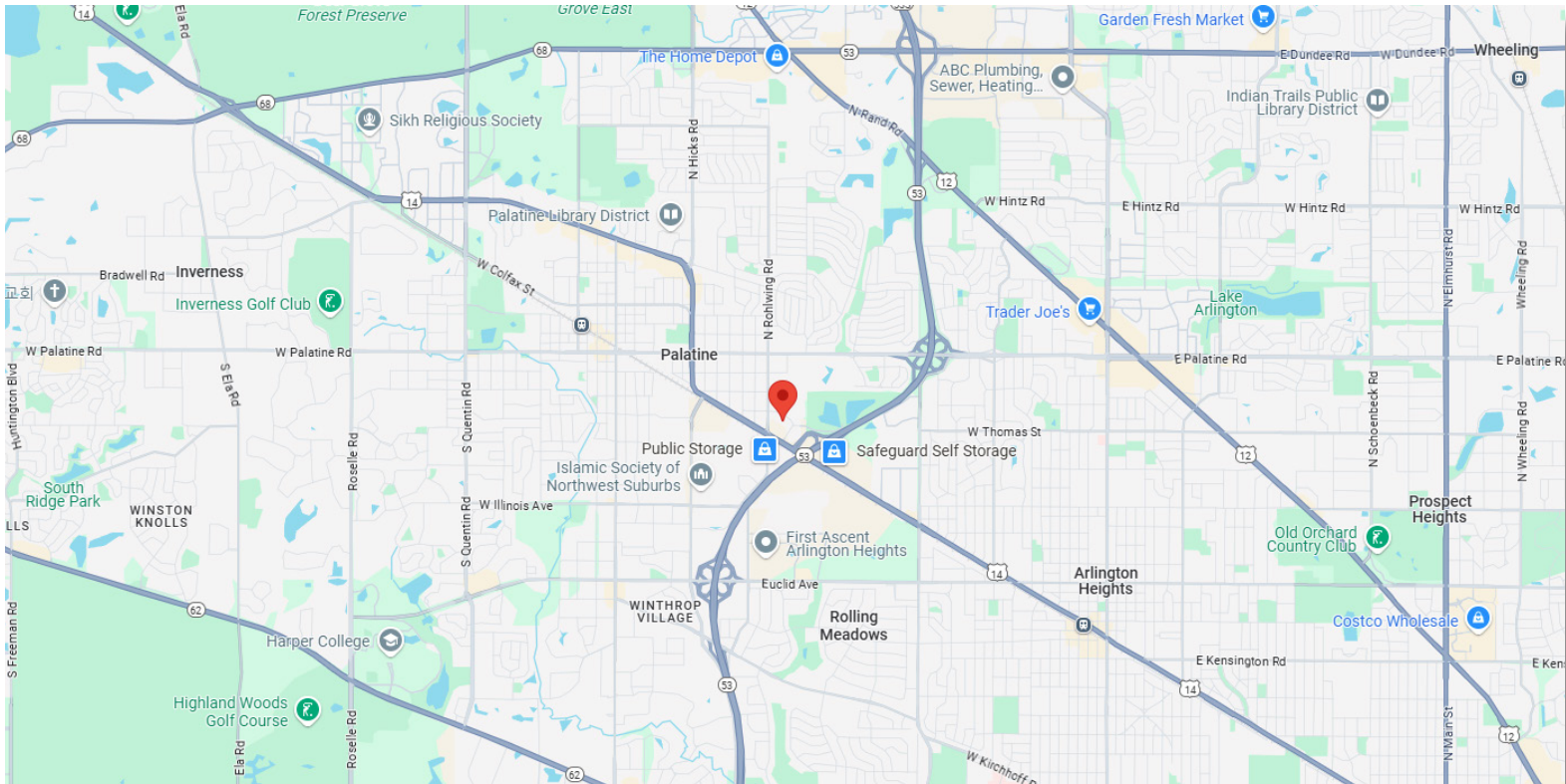




OFFICE/MEDICAL SPACE FOR LEASE

887 E WILMETTE PALATINE, IL

AREA MAPS





OFFICE/MEDICAL SPACE FOR LEASE

887 E WILMETTE PALATINE, IL

BUILDING PHOTOGRAPHS

