



SUITE SIZE

2,057 SF

USES

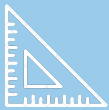
Medical Office
Commercial Office

PARKING

Ample

ASKING PRICE

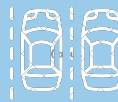
\$485,000



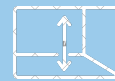
2,057
Square Feet



3
Stories



Ample
Parking
Spots



10'
Unfinished
Ceiling Height

PROPERTY HIGHLIGHTS

- ✓ Upscale Office Building
- ✓ One block from courthouse, 2 blocks from Metro
- ✓ 4 dedicated parking spaces included, additional spaces available for rent
- ✓ Top floor suite
- ✓ Collaborative tenant base
- ✓ Great window lines available
- ✓ Flexible floor plan for reconfiguration
- ✓ Professionally managed condo association

SHOPPING

Various shopping and food choices in walking distance

ROCKVILLE PIKE

0.35 miles

ROUTE 270

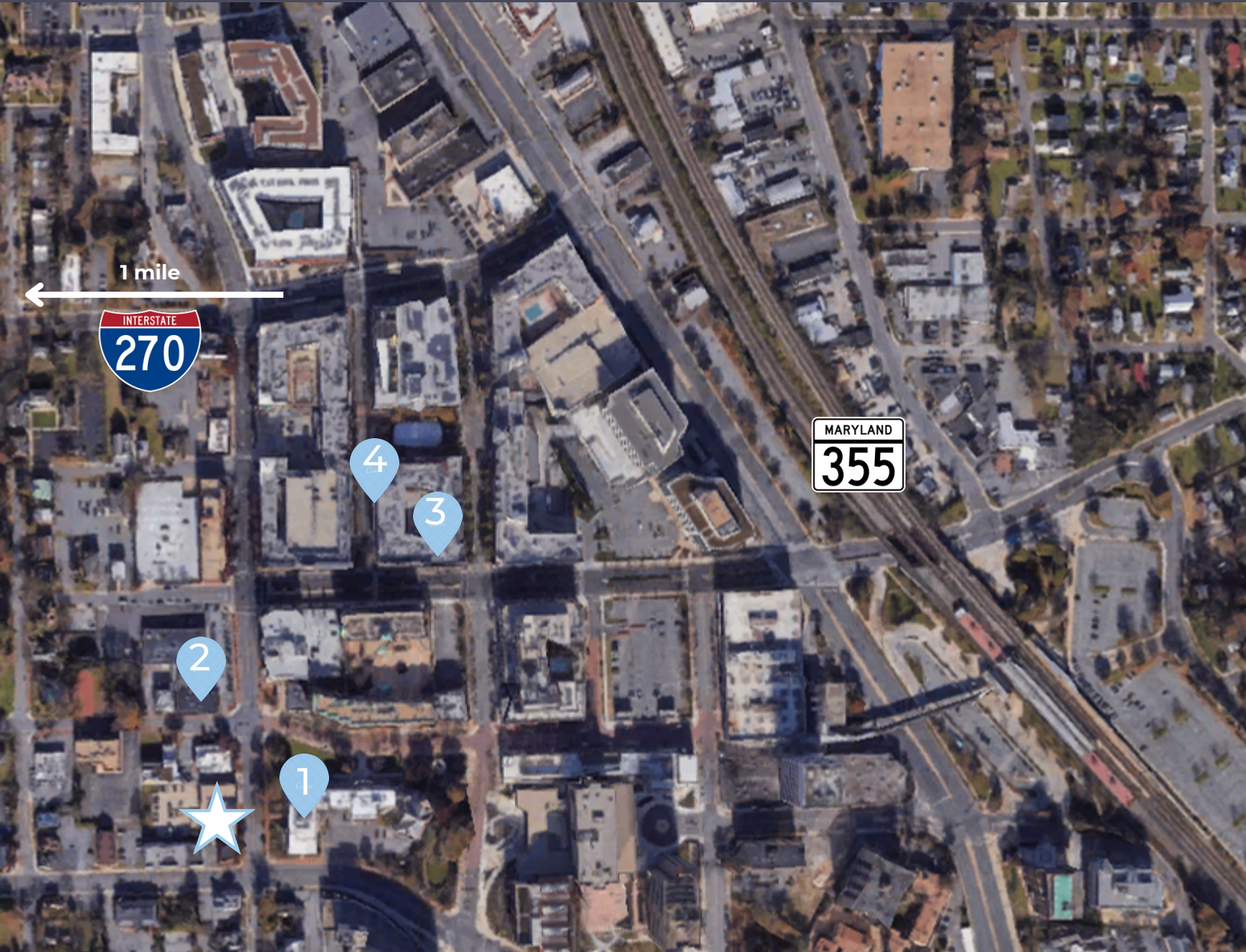
1 mile

WASHINGTON, D.C.

8.5 miles

BALTIMORE

30 miles



MONTGOMERY COUNTY DISTRICT COURT



A: 1906 Towne Centre Blvd. Suite 270 Annapolis, MD 21401

E: mason.popham@thomas-park.com | **W:** www.thomas-park.com | **P:** 410.280.0220

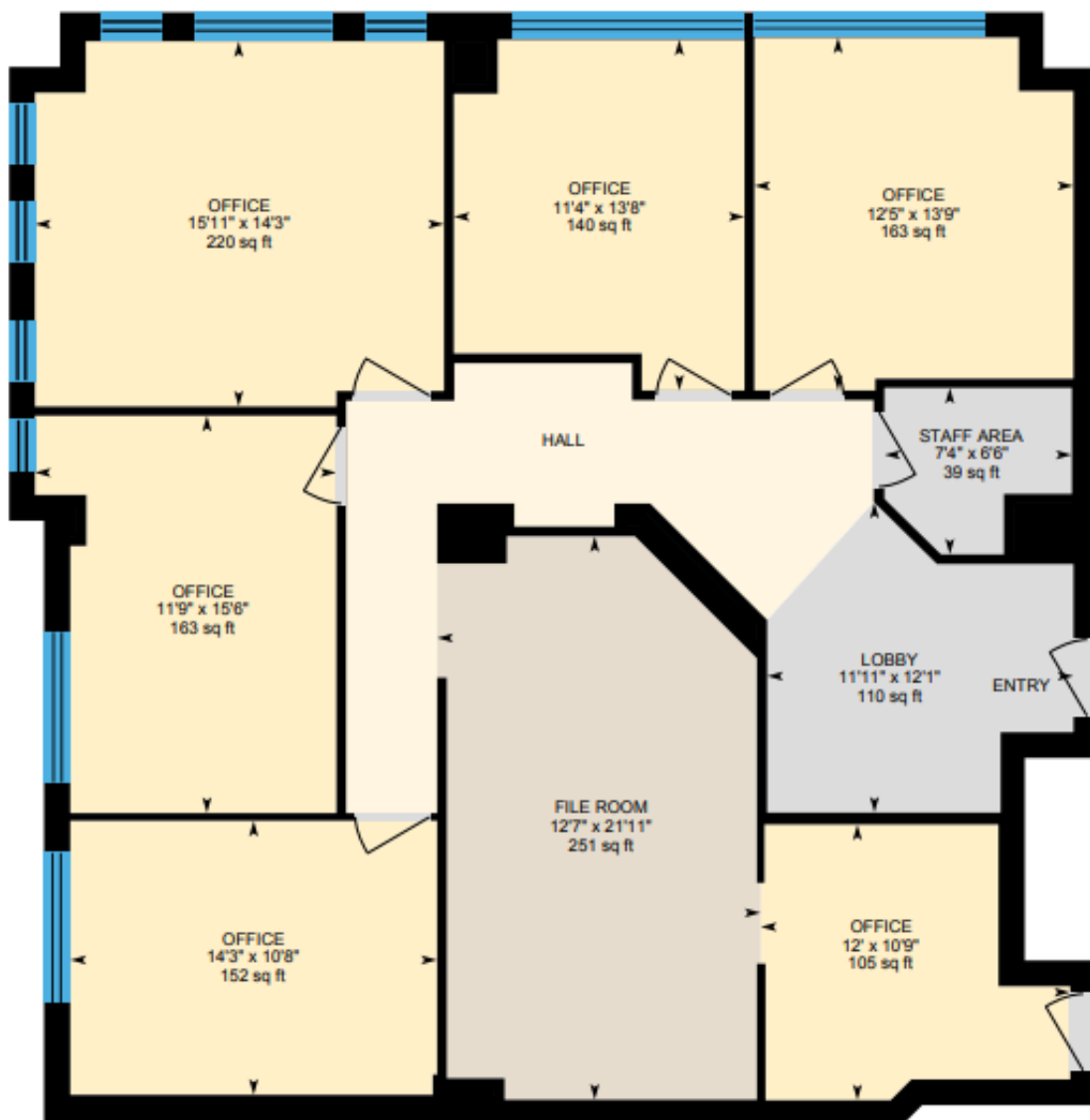
SUITE 306
FLOORPLAN

2,057
RENTABLE
SQUARE FEET

TOP FLOOR
SPACE

VERY WELL
KEPT &
ADAPTABLE
FLOOR PLAN

[CLICK HERE FOR A VIRTUAL 3D TOUR](#)



Thomas Park is a **full-service commercial real estate firm** offering alternative investment strategies and third-party commercial real estate services.



Thomas Park Commercial specializes in leasing and investment brokerage across all commercial asset classes throughout Maryland.



MASON POPHAM

EXECUTIVE VICE PRESIDENT
THOMAS PARK COMMERCIAL

E: mason.popham@thomas-park.com

T: 410.280.0220



TPI is one of the fastest growing private equity real estate investment firms on the East Coast focused exclusively on healthcare real estate.



TPM is a best in class property management firm with a 30+ year track record in the commercial real estate industry.



TPD is an innovative interior design firm specializing in healthcare, medical office, commercial office, and retail.



TPC focuses on commercial construction within the healthcare, retail, office and industrial sectors.