

LAND FOR SALE

3.54 AC

CLUB VILLAS AT BRICK LANDING PLANTATION

0 LANDING BLVD. SW | OCEAN ISLE BEACH, NC 28469

DAN KOELLER
dkoeller@lee-associates.com
O 919.591.2274
C 919.349.7857

LUKE MELLO
lmello@lee-associates.com
O 910.800.2260
C 910.945.9755

**LEE &
ASSOCIATES**
COMMERCIAL REAL ESTATE SERVICES
RALEIGH • DURHAM • WILMINGTON

All information furnished regarding property for sale, rental or financing is from sources deemed reliable, but no warranty or representation is made to the accuracy thereof and same is submitted to errors, omissions, change of price, rental or other conditions prior to sale, lease or financing or withdrawal without notice. No liability of any kind is to be imposed on the broker herein.

PROPERTY OVERVIEW

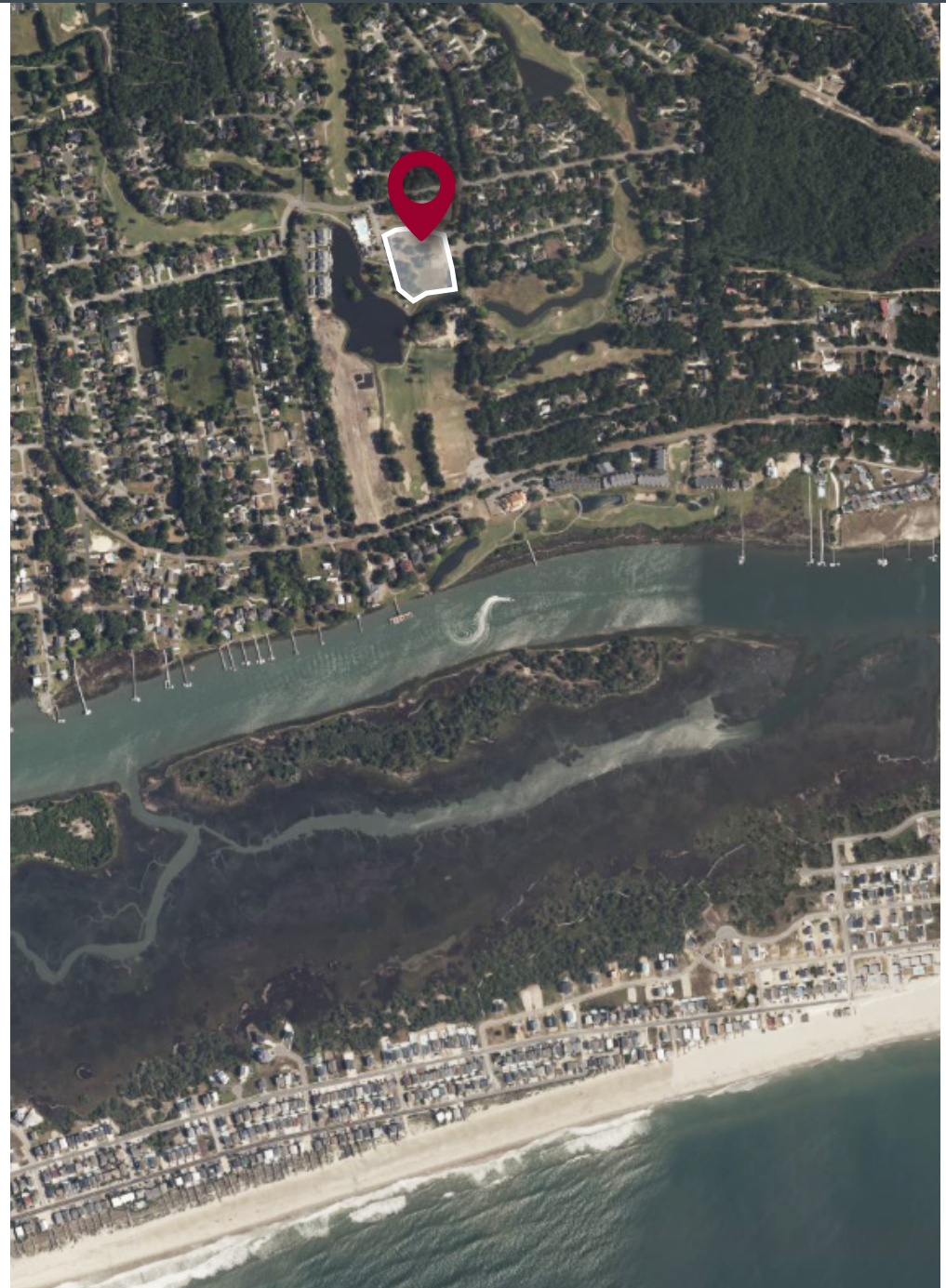
Club Villas is a 3.54-acre site, adjacent to the Tennis Courts in the heart of Brick Landing Plantation. The property features 30 fully approved, paper-platted townhome lots, offering a rare and development-ready opportunity within an established coastal community.

Brick Landing Plantation is experiencing strong demand and a growing sense of urgency for new residential development, making this site well-positioned for near-term execution. The location provides convenient access to nearby grocery stores, shopping, and everyday amenities, while also being just a short drive to premier recreation including Ocean Isle Beach, the Intracoastal Waterway (ICW), and The Links at Brick Landing Golf Course.

With entitlements in place and a highly desirable coastal setting, Club Villas presents an exceptional opportunity for townhome development in one of the area's most sought-after communities.

HIGHLIGHTS

- 3.54 Acres
- 30 Fully approved townhome paper-platted lots in Brick Landing Plantation
- Existing infrastructure in place
- Parcel ID: 2440000107
- Zoning: PUD (Planned Unit Development)
- Short walk to the Intracoastal Waterway (ICW) and Brick Landing Golf Clubhouse
- Community amenities include a contiguous recreation complex featuring: Resort-style swimming pool, Tennis courts, Pickleball courts, Bocce courts
- 7 Minutes to Ocean Isle Beach
- Sale price: \$750,000



PROPERTY PHOTOS



0 LANDING BLVD. SW | OCEAN ISLE BEACH, NC 28469

SITE PLAN



BRICK LANDING MASTER PLAN



0 LANDING BLVD. SW | OCEAN ISLE BEACH, NC 28469

AREA OVERVIEW



JAGUARS LAIR
GOLF COURSE

ODELL WILLIAMSON
MUNICIPAL AIRPORT

Lowes

BB&T

FIRST BANK

ABC LIQUOR STORE

DOLLAR TREE

SUBWAY

SITE

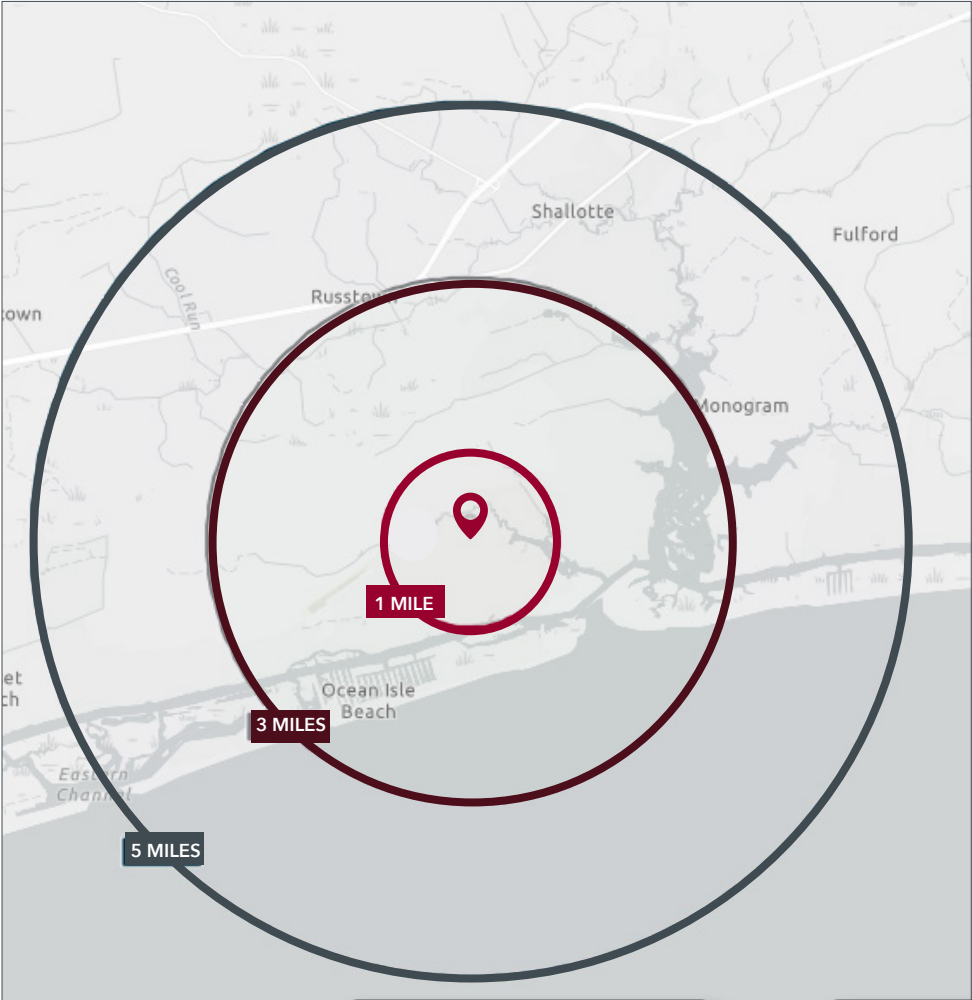
OCEAN ISLE BEACH

ATLANTIC
OCEAN

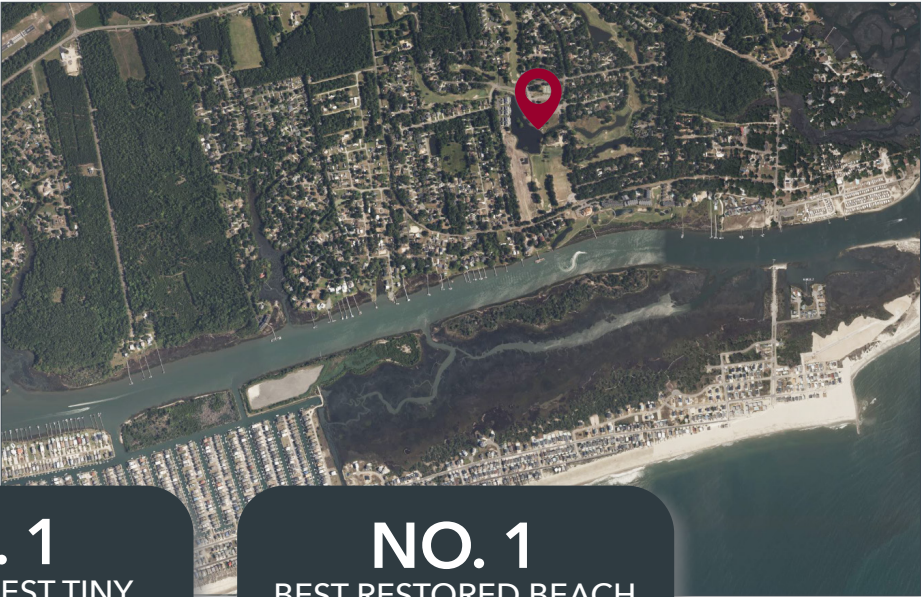
DISTANCES	
MYRTLE BEACH	36.3 MILES
WILMINGTON	41.7 MILES
RALEIGH	156.0 MILES

0 LANDING BLVD. SW | OCEAN ISLE BEACH, NC 28469

DEMOGRAPHICS



	1 MILE	3 MILES	5 MILES
Population (2025)	2,132	8,368	21,088
Daytime Population	1,760	7,425	24,065
Median Age	61.4	57.9	58.2
Average Household Income	\$99,434	\$103,753	\$102,135
Average Home Value	\$471,292	\$476,181	\$470,364



NO. 1
FAVORITE BEACH IN
BRUNSWICK COUNTY
(ANNUAL READER'S LOCAL CHOICE AWARD)

NO. 1
"SOUTH'S BEST TINY
TOWN"
(SOUTHERN LIVING)

NO. 1
BEST RESTORED BEACH
(THE AMERICAN SHORE & BEACH
PRESERVATION ASSOCIATION)

PRESENTED BY:

DAN KOELLER

dkoeller@lee-associates.com

O 919.591.2274

C 919.349.7857

LUKE MELLO

lmello@lee-associates.com

O 910.800.2260

C 910.945.9755



**LEE &
ASSOCIATES**

COMMERCIAL REAL ESTATE SERVICES
RALEIGH • DURHAM • WILMINGTON

6781 Parker Farm Dr. | Wilmington, NC 28405 | 910.685.7800 | leewilmington.com

All information furnished regarding property for sale, rental or financing is from sources deemed reliable, but no warranty or representation is made to the accuracy thereof and same is submitted to errors, omissions, change of price, rental or other conditions prior to sale, lease or financing or withdrawal without notice. No liability of any kind is to be imposed on the broker herein.