

VICINITY MAP No. J-10

- GENERAL NOTES:**
1. OWNER OF RECORD PER STEWART TITLE CO. TITLE BINDER DATED JULY 13, 2012 IS JANE V. HUELSMANN, TRUSTEE OF THE HUELSMANN FAMILY TRUST, DATED AUGUST 31, 2001. AS AMENDED, AS TO PARCEL 1; AND JANE V. HUELSMANN AKA JANE HUELSMANN AS TO PARCEL 2.
  2. LEGAL DESCRIPTION AND EASEMENTS SHOWN WERE PROVIDED BY STEWART TITLE CO. COMMITMENT NO. 12080432.
  3. PLATS USED TO ESTABLISH BOUNDARY: A. PLAT OF ATRISCO BUSINESS PARK, UNIT 4 FILED MAY 12, 1986 IN PLAT BOOK C30, PAGE 103
  4. FIELD BOOK FURNISHED ON: JULY 2012.
  5. PARKING: 0
  6. HANDICAP: 0
  7. REGULAR: 0
  8. TOTAL: 0
  9. CURRENT ZONING: S-L-1

TRACT 0-4  
ATRISCO BUSINESS PARK, UNIT 4  
FILED MAY 12, 1986  
VOLUME C30, FOLIO 103

TRACT 0-3  
ATRISCO BUSINESS PARK, UNIT 4  
FILED MAY 12, 1986  
VOLUME C30, FOLIO 103

TRACT 0-2  
ATRISCO BUSINESS PARK, UNIT 4  
FILED MAY 12, 1986  
VOLUME C30, FOLIO 103

TRACT 0-1  
ATRISCO BUSINESS PARK, UNIT 4  
FILED MAY 12, 1986  
VOLUME C30, FOLIO 103

TRACT 0-6  
ATRISCO BUSINESS PARK, UNIT 4  
FILED JULY 1, 1964  
BOOK 0749, PAGE 630

TRACT 0-5  
ATRISCO BUSINESS PARK, UNIT 4  
FILED JULY 1, 1964  
BOOK 0749, PAGE 630

TRACT 0-4  
ATRISCO BUSINESS PARK, UNIT 4  
FILED JULY 1, 1964  
BOOK 0749, PAGE 630

TRACT 0-3  
ATRISCO BUSINESS PARK, UNIT 4  
FILED JULY 1, 1964  
BOOK 0749, PAGE 630

TRACT 0-2  
ATRISCO BUSINESS PARK, UNIT 4  
FILED JULY 1, 1964  
BOOK 0749, PAGE 630

TRACT 0-1  
ATRISCO BUSINESS PARK, UNIT 4  
FILED JULY 1, 1964  
BOOK 0749, PAGE 630

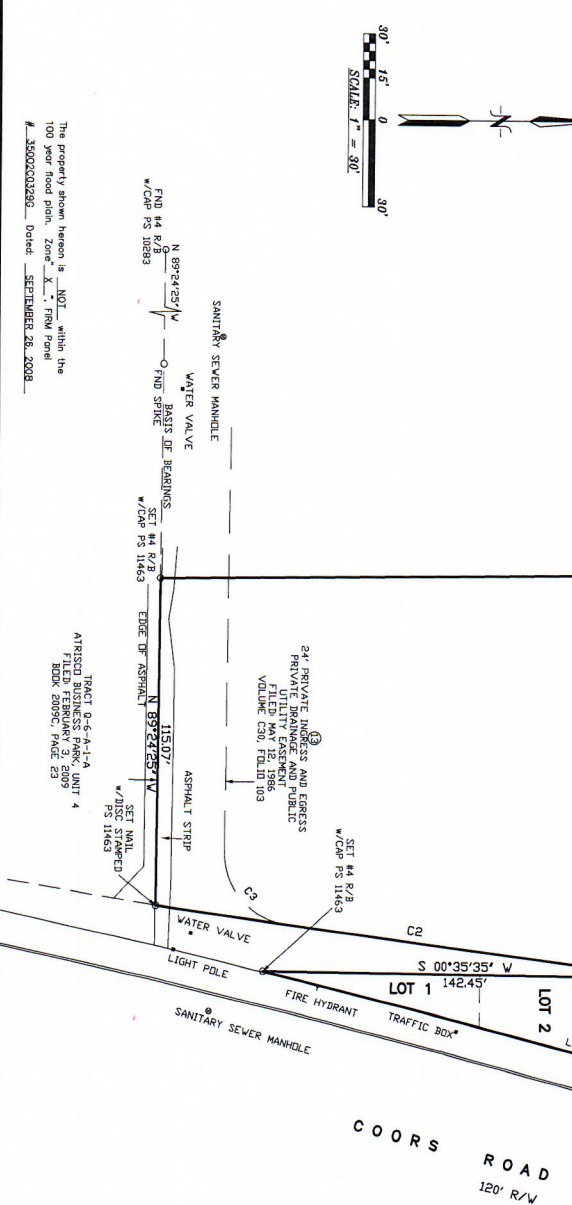
TRACT 0-6  
ATRISCO BUSINESS PARK, UNIT 4  
FILED JULY 1, 1964  
BOOK 0749, PAGE 630

TRACT 0-5  
ATRISCO BUSINESS PARK, UNIT 4  
FILED JULY 1, 1964  
BOOK 0749, PAGE 630

TRACT 0-4  
ATRISCO BUSINESS PARK, UNIT 4  
FILED JULY 1, 1964  
BOOK 0749, PAGE 630

TRACT 0-3  
ATRISCO BUSINESS PARK, UNIT 4  
FILED JULY 1, 1964  
BOOK 0749, PAGE 630

TRACT 0-2  
ATRISCO BUSINESS PARK, UNIT 4  
FILED JULY 1, 1964  
BOOK 0749, PAGE 630



**A.L.T.A. / A.C.S.M. LAND TITLE SURVEY**  
OF  
**TRACT 0-3**  
**ATRISCO BUSINESS PARK**  
**REMAINING PORTIONS OF LOTS 1 THRU 5**  
**BLOCK 1 NORTHERN HEIGHTS**  
CITY OF ALBUQUERQUE  
BERNALILLO COUNTY, NEW MEXICO  
JULY, 2012

**LEGAL DESCRIPTION:**

PARCEL 1, LETTERED "0-3" OF ATRISCO BUSINESS PARK, UNIT 4, AS THE SAME IS SHOWN AND DESIGNATED ON THE PLAT ENTITLED "PLAT OF ATRISCO BUSINESS PARK, UNIT 4, A REPLAT OF TRACTS 0-1, 0-2, 0-3, 0-4, 0-5, 0-6, 0-7, 0-8, 0-9, 0-10, 0-11, 0-12, 0-13, 0-14, 0-15, 0-16, 0-17, 0-18, 0-19, 0-20, 0-21, 0-22, 0-23, 0-24, 0-25, 0-26, 0-27, 0-28, 0-29, 0-30, 0-31, 0-32, 0-33, 0-34, 0-35, 0-36, 0-37, 0-38, 0-39, 0-40, 0-41, 0-42, 0-43, 0-44, 0-45, 0-46, 0-47, 0-48, 0-49, 0-50, 0-51, 0-52, 0-53, 0-54, 0-55, 0-56, 0-57, 0-58, 0-59, 0-60, 0-61, 0-62, 0-63, 0-64, 0-65, 0-66, 0-67, 0-68, 0-69, 0-70, 0-71, 0-72, 0-73, 0-74, 0-75, 0-76, 0-77, 0-78, 0-79, 0-80, 0-81, 0-82, 0-83, 0-84, 0-85, 0-86, 0-87, 0-88, 0-89, 0-90, 0-91, 0-92, 0-93, 0-94, 0-95, 0-96, 0-97, 0-98, 0-99, 0-100, 0-101, 0-102, 0-103, 0-104, 0-105, 0-106, 0-107, 0-108, 0-109, 0-110, 0-111, 0-112, 0-113, 0-114, 0-115, 0-116, 0-117, 0-118, 0-119, 0-120, 0-121, 0-122, 0-123, 0-124, 0-125, 0-126, 0-127, 0-128, 0-129, 0-130, 0-131, 0-132, 0-133, 0-134, 0-135, 0-136, 0-137, 0-138, 0-139, 0-140, 0-141, 0-142, 0-143, 0-144, 0-145, 0-146, 0-147, 0-148, 0-149, 0-150, 0-151, 0-152, 0-153, 0-154, 0-155, 0-156, 0-157, 0-158, 0-159, 0-160, 0-161, 0-162, 0-163, 0-164, 0-165, 0-166, 0-167, 0-168, 0-169, 0-170, 0-171, 0-172, 0-173, 0-174, 0-175, 0-176, 0-177, 0-178, 0-179, 0-180, 0-181, 0-182, 0-183, 0-184, 0-185, 0-186, 0-187, 0-188, 0-189, 0-190, 0-191, 0-192, 0-193, 0-194, 0-195, 0-196, 0-197, 0-198, 0-199, 0-200, 0-201, 0-202, 0-203, 0-204, 0-205, 0-206, 0-207, 0-208, 0-209, 0-210, 0-211, 0-212, 0-213, 0-214, 0-215, 0-216, 0-217, 0-218, 0-219, 0-220, 0-221, 0-222, 0-223, 0-224, 0-225, 0-226, 0-227, 0-228, 0-229, 0-230, 0-231, 0-232, 0-233, 0-234, 0-235, 0-236, 0-237, 0-238, 0-239, 0-240, 0-241, 0-242, 0-243, 0-244, 0-245, 0-246, 0-247, 0-248, 0-249, 0-250, 0-251, 0-252, 0-253, 0-254, 0-255, 0-256, 0-257, 0-258, 0-259, 0-260, 0-261, 0-262, 0-263, 0-264, 0-265, 0-266, 0-267, 0-268, 0-269, 0-270, 0-271, 0-272, 0-273, 0-274, 0-275, 0-276, 0-277, 0-278, 0-279, 0-280, 0-281, 0-282, 0-283, 0-284, 0-285, 0-286, 0-287, 0-288, 0-289, 0-290, 0-291, 0-292, 0-293, 0-294, 0-295, 0-296, 0-297, 0-298, 0-299, 0-300, 0-301, 0-302, 0-303, 0-304, 0-305, 0-306, 0-307, 0-308, 0-309, 0-310, 0-311, 0-312, 0-313, 0-314, 0-315, 0-316, 0-317, 0-318, 0-319, 0-320, 0-321, 0-322, 0-323, 0-324, 0-325, 0-326, 0-327, 0-328, 0-329, 0-330, 0-331, 0-332, 0-333, 0-334, 0-335, 0-336, 0-337, 0-338, 0-339, 0-340, 0-341, 0-342, 0-343, 0-344, 0-345, 0-346, 0-347, 0-348, 0-349, 0-350, 0-351, 0-352, 0-353, 0-354, 0-355, 0-356, 0-357, 0-358, 0-359, 0-360, 0-361, 0-362, 0-363, 0-364, 0-365, 0-366, 0-367, 0-368, 0-369, 0-370, 0-371, 0-372, 0-373, 0-374, 0-375, 0-376, 0-377, 0-378, 0-379, 0-380, 0-381, 0-382, 0-383, 0-384, 0-385, 0-386, 0-387, 0-388, 0-389, 0-390, 0-391, 0-392, 0-393, 0-394, 0-395, 0-396, 0-397, 0-398, 0-399, 0-400, 0-401, 0-402, 0-403, 0-404, 0-405, 0-406, 0-407, 0-408, 0-409, 0-410, 0-411, 0-412, 0-413, 0-414, 0-415, 0-416, 0-417, 0-418, 0-419, 0-420, 0-421, 0-422, 0-423, 0-424, 0-425, 0-426, 0-427, 0-428, 0-429, 0-430, 0-431, 0-432, 0-433, 0-434, 0-435, 0-436, 0-437, 0-438, 0-439, 0-440, 0-441, 0-442, 0-443, 0-444, 0-445, 0-446, 0-447, 0-448, 0-449, 0-450, 0-451, 0-452, 0-453, 0-454, 0-455, 0-456, 0-457, 0-458, 0-459, 0-460, 0-461, 0-462, 0-463, 0-464, 0-465, 0-466, 0-467, 0-468, 0-469, 0-470, 0-471, 0-472, 0-473, 0-474, 0-475, 0-476, 0-477, 0-478, 0-479, 0-480, 0-481, 0-482, 0-483, 0-484, 0-485, 0-486, 0-487, 0-488, 0-489, 0-490, 0-491, 0-492, 0-493, 0-494, 0-495, 0-496, 0-497, 0-498, 0-499, 0-500, 0-501, 0-502, 0-503, 0-504, 0-505, 0-506, 0-507, 0-508, 0-509, 0-510, 0-511, 0-512, 0-513, 0-514, 0-515, 0-516, 0-517, 0-518, 0-519, 0-520, 0-521, 0-522, 0-523, 0-524, 0-525, 0-526, 0-527, 0-528, 0-529, 0-530, 0-531, 0-532, 0-533, 0-534, 0-535, 0-536, 0-537, 0-538, 0-539, 0-540, 0-541, 0-542, 0-543, 0-544, 0-545, 0-546, 0-547, 0-548, 0-549, 0-550, 0-551, 0-552, 0-553, 0-554, 0-555, 0-556, 0-557, 0-558, 0-559, 0-560, 0-561, 0-562, 0-563, 0-564, 0-565, 0-566, 0-567, 0-568, 0-569, 0-570, 0-571, 0-572, 0-573, 0-574, 0-575, 0-576, 0-577, 0-578, 0-579, 0-580, 0-581, 0-582, 0-583, 0-584, 0-585, 0-586, 0-587, 0-588, 0-589, 0-590, 0-591, 0-592, 0-593, 0-594, 0-595, 0-596, 0-597, 0-598, 0-599, 0-600, 0-601, 0-602, 0-603, 0-604, 0-605, 0-606, 0-607, 0-608, 0-609, 0-610, 0-611, 0-612, 0-613, 0-614, 0-615, 0-616, 0-617, 0-618, 0-619, 0-620, 0-621, 0-622, 0-623, 0-624, 0-625, 0-626, 0-627, 0-628, 0-629, 0-630, 0-631, 0-632, 0-633, 0-634, 0-635, 0-636, 0-637, 0-638, 0-639, 0-640, 0-641, 0-642, 0-643, 0-644, 0-645, 0-646, 0-647, 0-648, 0-649, 0-650, 0-651, 0-652, 0-653, 0-654, 0-655, 0-656, 0-657, 0-658, 0-659, 0-660, 0-661, 0-662, 0-663, 0-664, 0-665, 0-666, 0-667, 0-668, 0-669, 0-670, 0-671, 0-672, 0-673, 0-674, 0-675, 0-676, 0-677, 0-678, 0-679, 0-680, 0-681, 0-682, 0-683, 0-684, 0-685, 0-686, 0-687, 0-688, 0-689, 0-690, 0-691, 0-692, 0-693, 0-694, 0-695, 0-696, 0-697, 0-698, 0-699, 0-700, 0-701, 0-702, 0-703, 0-704, 0-705, 0-706, 0-707, 0-708, 0-709, 0-710, 0-711, 0-712, 0-713, 0-714, 0-715, 0-716, 0-717, 0-718, 0-719, 0-720, 0-721, 0-722, 0-723, 0-724, 0-725, 0-726, 0-727, 0-728, 0-729, 0-730, 0-731, 0-732, 0-733, 0-734, 0-735, 0-736, 0-737, 0-738, 0-739, 0-740, 0-741, 0-742, 0-743, 0-744, 0-745, 0-746, 0-747, 0-748, 0-749, 0-750, 0-751, 0-752, 0-753, 0-754, 0-755, 0-756, 0-757, 0-758, 0-759, 0-760, 0-761, 0-762, 0-763, 0-764, 0-765, 0-766, 0-767, 0-768, 0-769, 0-770, 0-771, 0-772, 0-773, 0-774, 0-775, 0-776, 0-777, 0-778, 0-779, 0-780, 0-781, 0-782, 0-783, 0-784, 0-785, 0-786, 0-787, 0-788, 0-789, 0-790, 0-791, 0-792, 0-793, 0-794, 0-795, 0-796, 0-797, 0-798, 0-799, 0-800, 0-801, 0-802, 0-803, 0-804, 0-805, 0-806, 0-807, 0-808, 0-809, 0-810, 0-811, 0-812, 0-813, 0-814, 0-815, 0-816, 0-817, 0-818, 0-819, 0-820, 0-821, 0-822, 0-823, 0-824, 0-825, 0-826, 0-827, 0-828, 0-829, 0-830, 0-831, 0-832, 0-833, 0-834, 0-835, 0-836, 0-837, 0-838, 0-839, 0-840, 0-841, 0-842, 0-843, 0-844, 0-845, 0-846, 0-847, 0-848, 0-849, 0-850, 0-851, 0-852, 0-853, 0-854, 0-855, 0-856, 0-857, 0-858, 0-859, 0-860, 0-861, 0-862, 0-863, 0-864, 0-865, 0-866, 0-867, 0-868, 0-869, 0-870, 0-871, 0-872, 0-873, 0-874, 0-875, 0-876, 0-877, 0-878, 0-879, 0-880, 0-881, 0-882, 0-883, 0-884, 0-885, 0-886, 0-887, 0-888, 0-889, 0-890, 0-891, 0-892, 0-893, 0-894, 0-895, 0-896, 0-897, 0-898, 0-899, 0-900, 0-901, 0-902, 0-903, 0-904, 0-905, 0-906, 0-907, 0-908, 0-909, 0-910, 0-911, 0-912, 0-913, 0-914, 0-915, 0-916, 0-917, 0-918, 0-919, 0-920, 0-921, 0-922, 0-923, 0-924, 0-925, 0-926, 0-927, 0-928, 0-929, 0-930, 0-931, 0-932, 0-933, 0-934, 0-935, 0-936, 0-937, 0-938, 0-939, 0-940, 0-941, 0-942, 0-943, 0-944, 0-945, 0-946, 0-947, 0-948, 0-949, 0-950, 0-951, 0-952, 0-953, 0-954, 0-955, 0-956, 0-957, 0-958, 0-959, 0-960, 0-961, 0-962, 0-963, 0-964, 0-965, 0-966, 0-967, 0-968, 0-969, 0-970, 0-971, 0-972, 0-973, 0-974, 0-975, 0-976, 0-977, 0-978, 0-979, 0-980, 0-981, 0-982, 0-983, 0-984, 0-985, 0-986, 0-987, 0-988, 0-989, 0-990, 0-991, 0-992, 0-993, 0-994, 0-995, 0-996, 0-997, 0-998, 0-999, 1000.

**LINE TABLE**

NUMBER	DIRECTION	DISTANCE
1	S 00°35'35" W	1300'

**CURVE TABLE**

CURVE NO.	BEGINNING POINT	END POINT	ARC LENGTH	CHORD LENGTH
1	00+00.00	00+35.35	35.35	35.35
2	00+35.35	00+70.70	70.70	70.70
3	00+70.70	00+106.05	106.05	106.05

CERTIFY TO: RAJIV P. SHAH AND STEWART TITLE GUARANTY COMPANY.

1. ANTHONY L. HARRIS, A PROFESSIONAL SURVEYOR, LICENSED UNDER THE LAWS OF THE STATE OF NEW MEXICO, DO HEREBY CERTIFY THAT I HAVE SURVEYED THE ABOVE DESCRIBED PROPERTY AND THAT THE PLAT HEREON DRAWN IS A TRUE AND CORRECT REPRESENTATION OF SAID SURVEY, TO THE BEST OF MY KNOWLEDGE AND BELIEF AND THAT THERE ARE NO ENCROACHMENTS FROM THE PROPERTY TO ADJACENT PROPERTY OR FROM ADJACENT PROPERTY TO THE PROPERTY UNLESS HERON SHOWN. I HEREBY CERTIFY THAT THIS MAP OR PLAT AND SURVEY OR PORTION THEREOF IS BASED UPON THE FOLLOWING: (1) IN ACCORDANCE WITH "MINIMUM STANDARD DETAIL REQUIREMENTS FOR ALTA/ACSM LAND TITLE SURVEYS," JOINTLY ESTABLISHED AND ADOPTED BY ALTA AND ACSM LAND IN 2011, AND INCLUDES ITEMS: 1, 2, 3, 4, 6, 7(A), 7(C), 8, 9, 10, 11(A), 13, 14, AND 18 OF TABLE A HEREOF; AND (2) PURSUANT TO THE ACCURACY STANDARDS (AS ADOPTED BY ALTA AND ACSM) AND IN EFFECT ON THE DATE OF THIS CERTIFICATION) ON AN "URBAN" SURVEY. GIVEN UNDER MY HAND AND SEAL AT ALBUQUERQUE, NEW MEXICO THIS \_\_\_\_\_ DAY OF \_\_\_\_\_, 2012.

ANTHONY L. HARRIS, N.M.P.S. #11463  
Professional Surveyor  
1000 West 10th Street, Suite 100  
Albuquerque, NM 87102  
Phone: (505) 889-8658  
Fax: (505) 889-8655  
www.altaacsm.com