

FOR LEASE

272 Richmond St E

OFFICE SPACE | ENTIRE BUILDING



**METROPOLITAN
COMMERCIAL**

PROPERTY DETAILS

LOCATION

Located on Richmond Street East, West of Sherbourne Street. [CLICK HERE](#)

BUILDING DETAILS

Ground Floor: 5,000 SF
Second Floor: 5,250 SF
Third Floor: 5,250 SF

Total Area: 15,500 SF (Entire building opportunity, floors are not divisible)

RENTAL RATE

Please Contact Agent To Discuss

ADDITIONAL RENT

Hydro and In-Suite Janitorial

TERM

Open

POSSESSION

Immediate

COMMISSION

\$1.50 PSF/YR

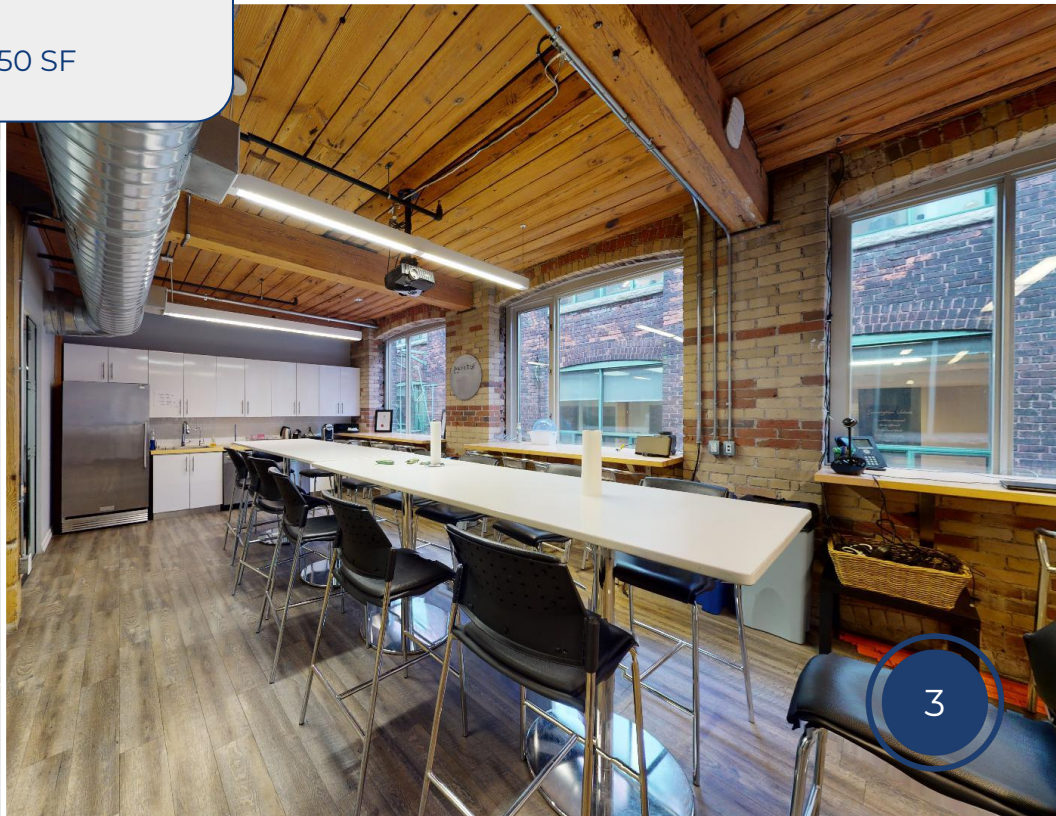
PROPERTY SUMMARY

This turnkey modern brick and beam office space spans across three levels. Single tenant opportunity for entire building. (Not divisible). Two of these levels are currently contiguous, while the main floor is separated into two units. The office space features a reception area, numerous private offices, some of which have glass doors and walls. It also includes large open work areas and several open concept workstation spaces, as well as larger main boardrooms, presentation rooms, and meeting rooms. Boasting a spacious eat-in kitchen area equipped with all existing appliances, and there is an additional smaller kitchenette. For convenience, there are washrooms on all levels, including two with showers, and the main floor is wheelchair accessible. Tenants have the benefit of all existing furniture available for their use. Additionally, there is the option of up to five car tandem parking spaces in the laneway. Minutes away from the Gardiner/DVP, a 10-minute walk to the Yonge Subway, and conveniently close to the Queen and King streetcar lines.



VIRTUAL
TOUR

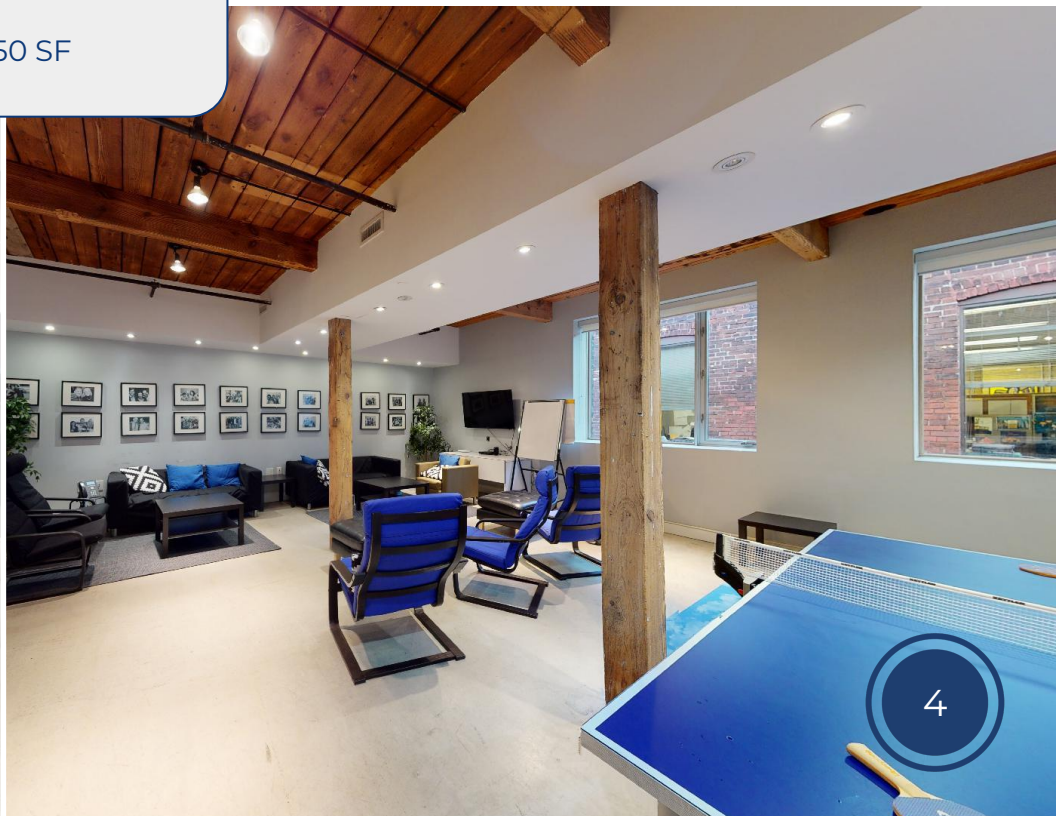
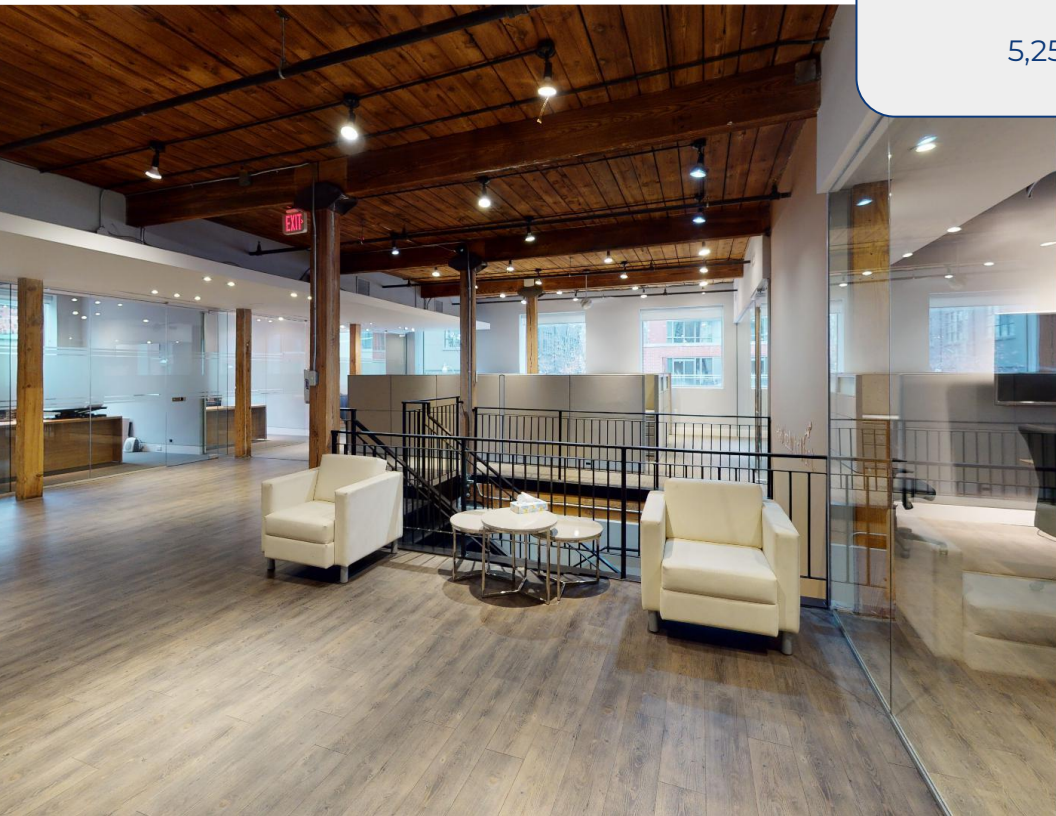
SECOND FLOOR
5,250 SF





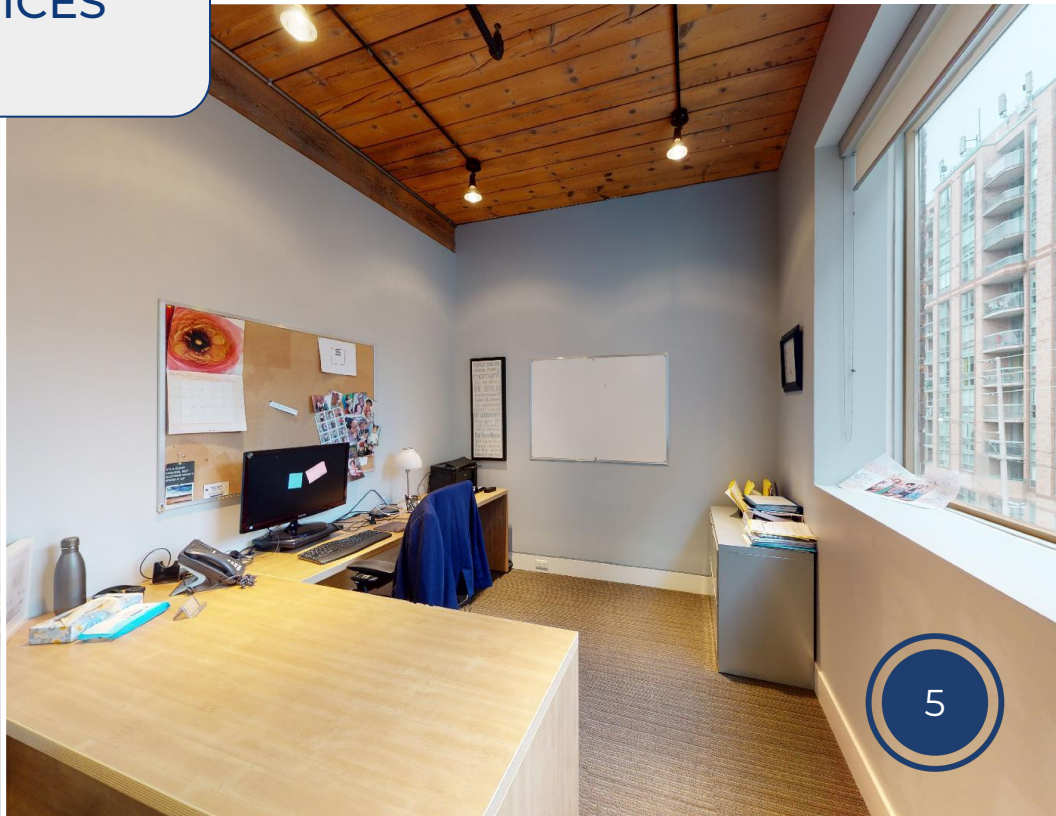
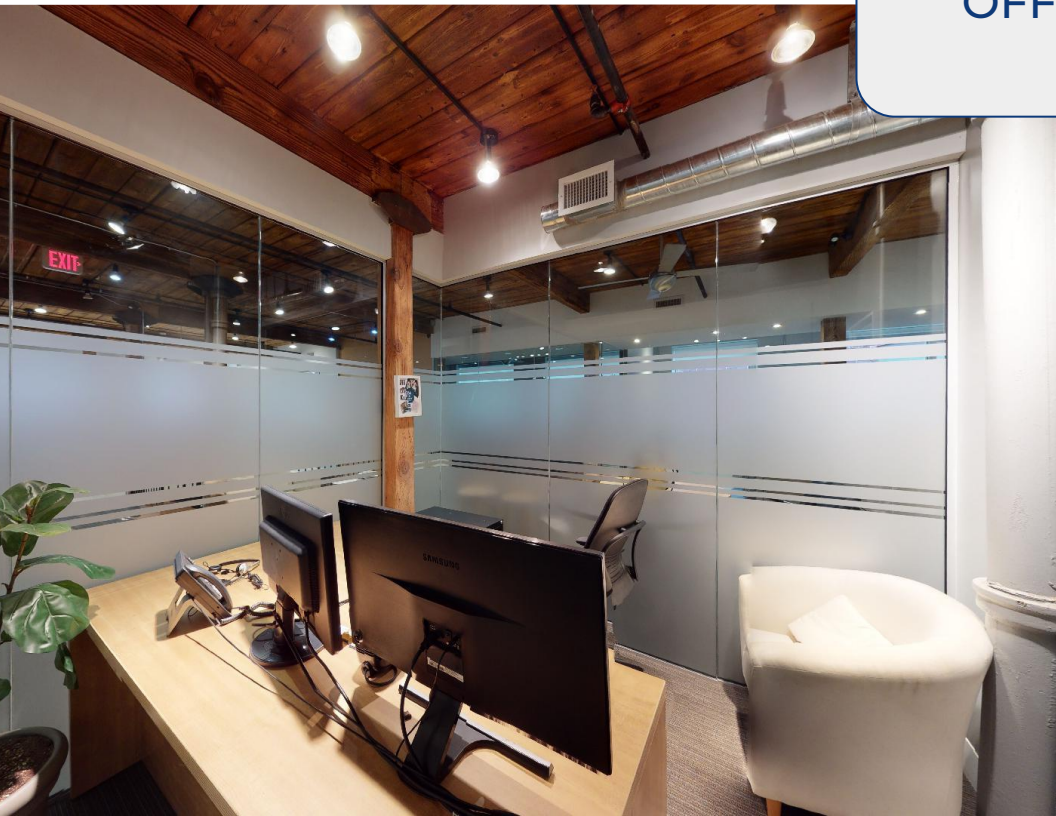
THIRD FLOOR

5,250 SF





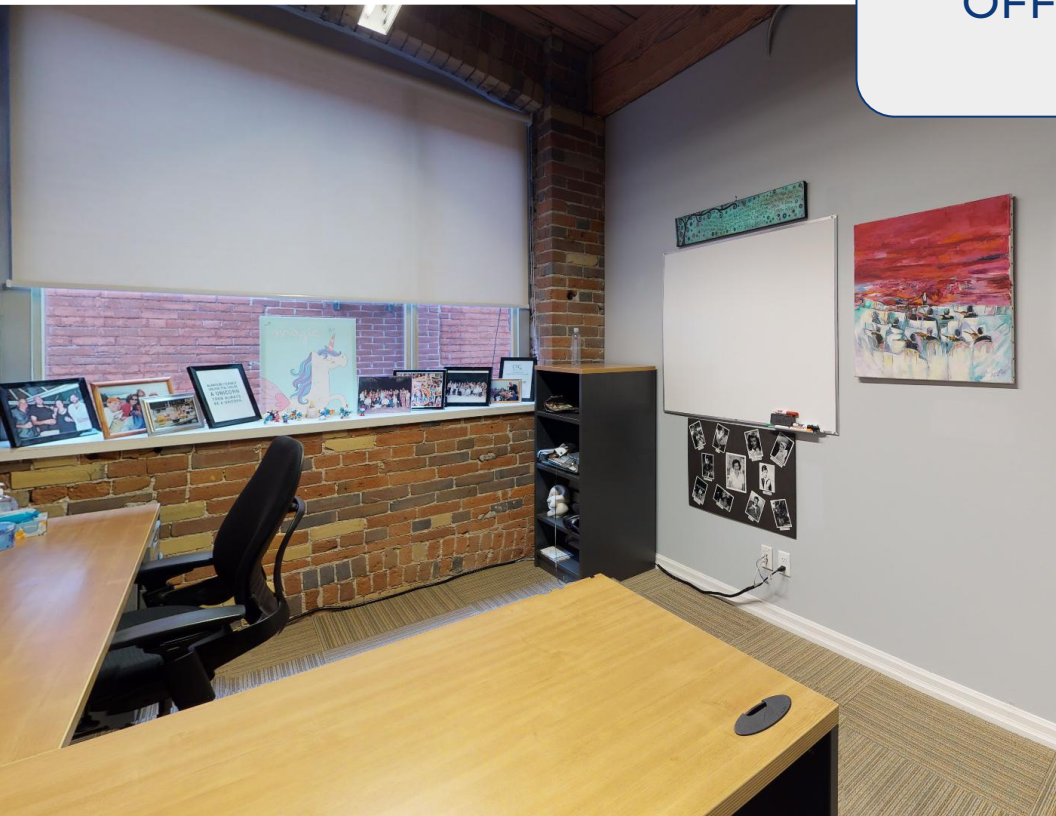
OFFICES





VIRTUAL
TOUR

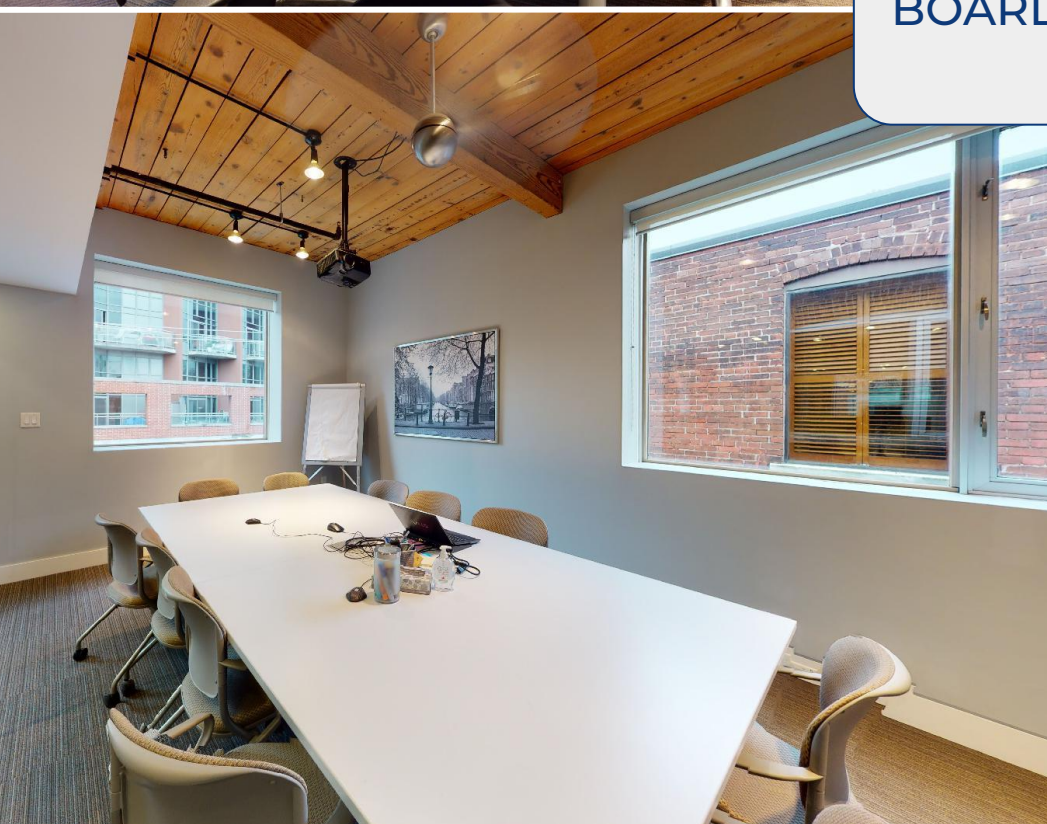
OFFICES





VIRTUAL
TOUR

BOARDROOMS



CONNECTIVITY



BIKE SCORE OF 98

- Ample bike storage
- Multiple Toronto Bike Share stations available



TRANSIT SCORE OF 99

- A ten minute walk to Queen subway station
- A ten minute walk to Queen subway station

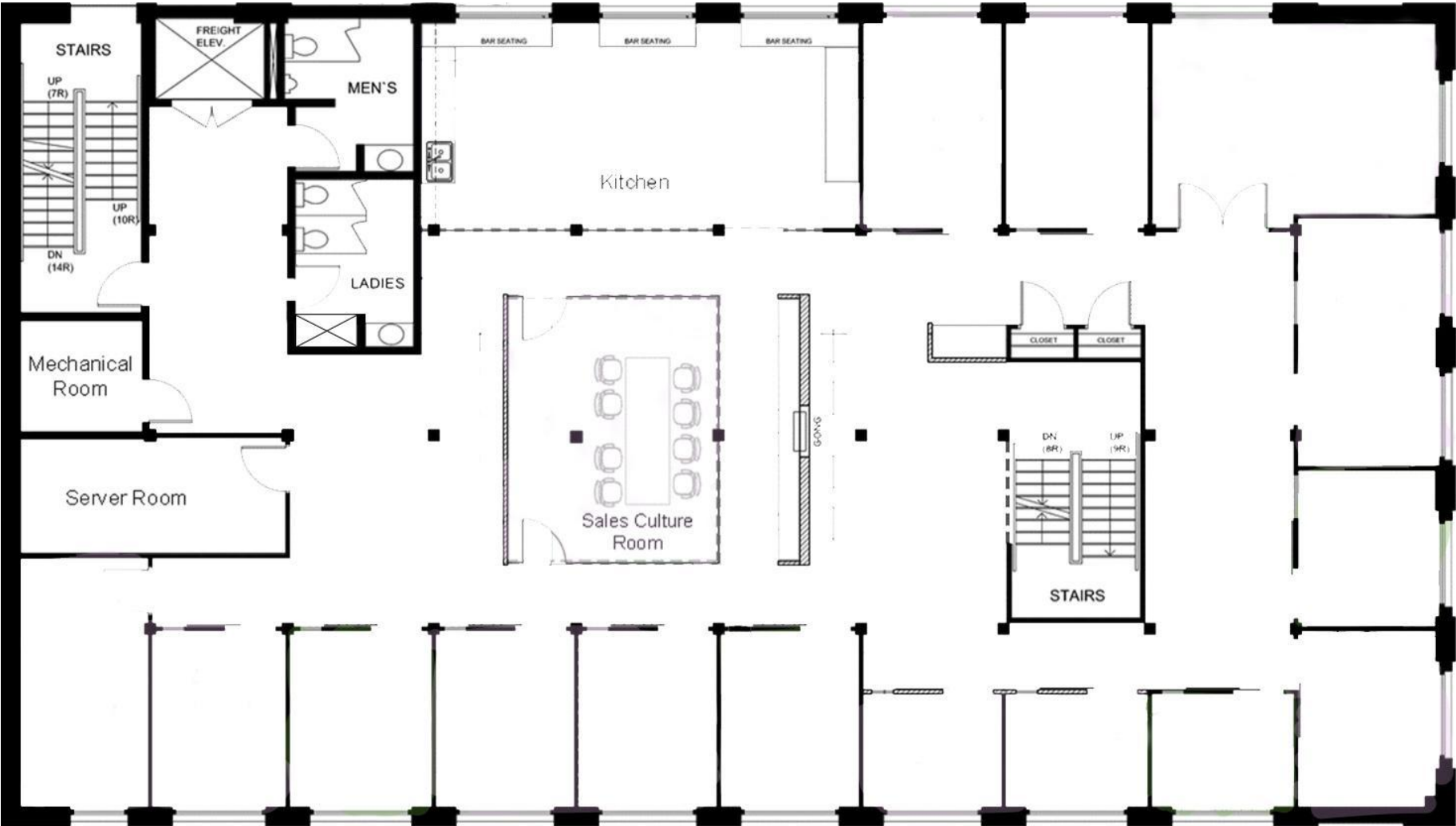


WALK SCORE OF 99

- Located in a pedestrian-friendly area within walking distance of downtown amenities, transit, parking, shopping and entertainment

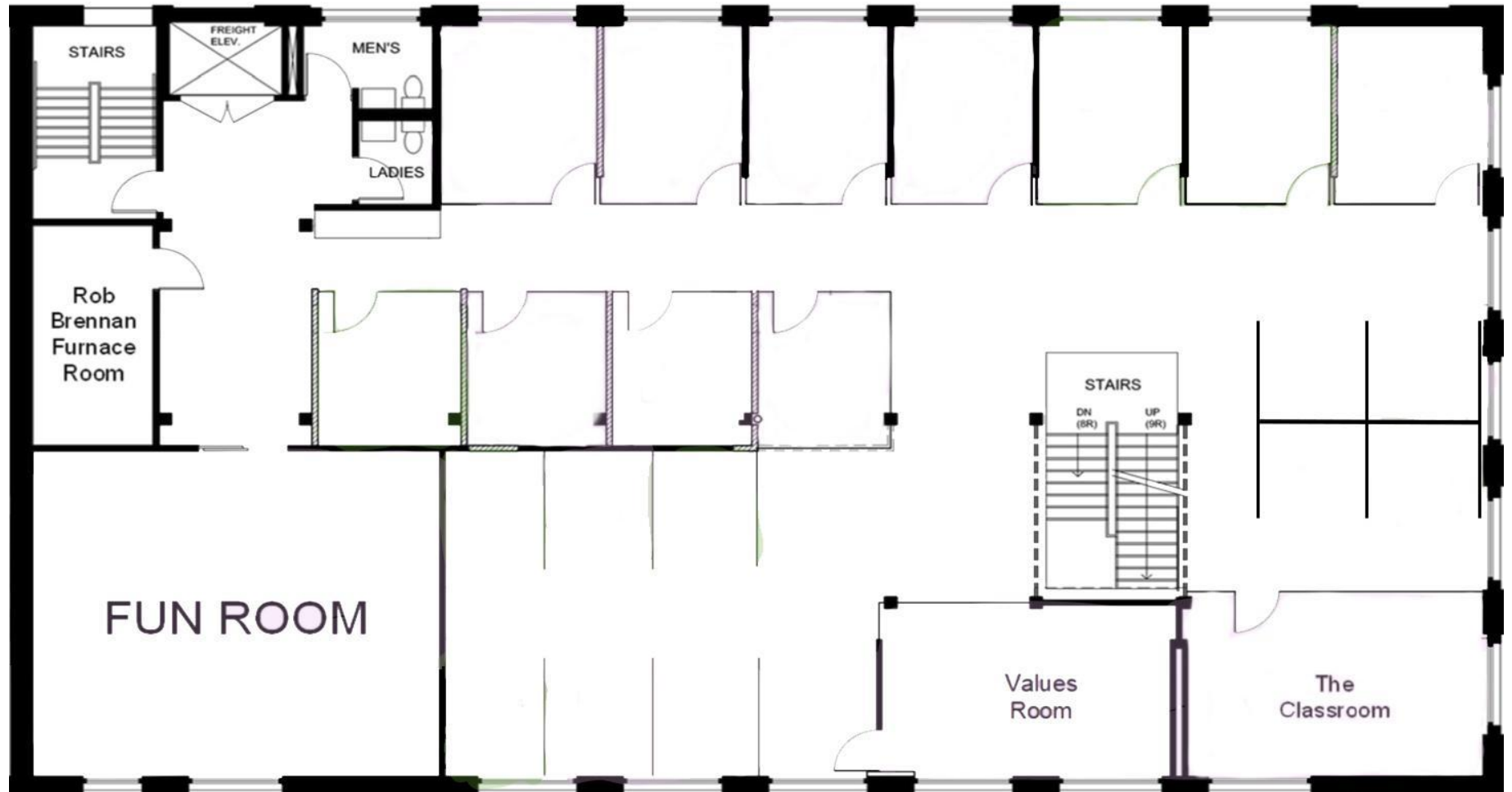
FLOOR PLANS

SECOND FLOOR - 5,250 SF

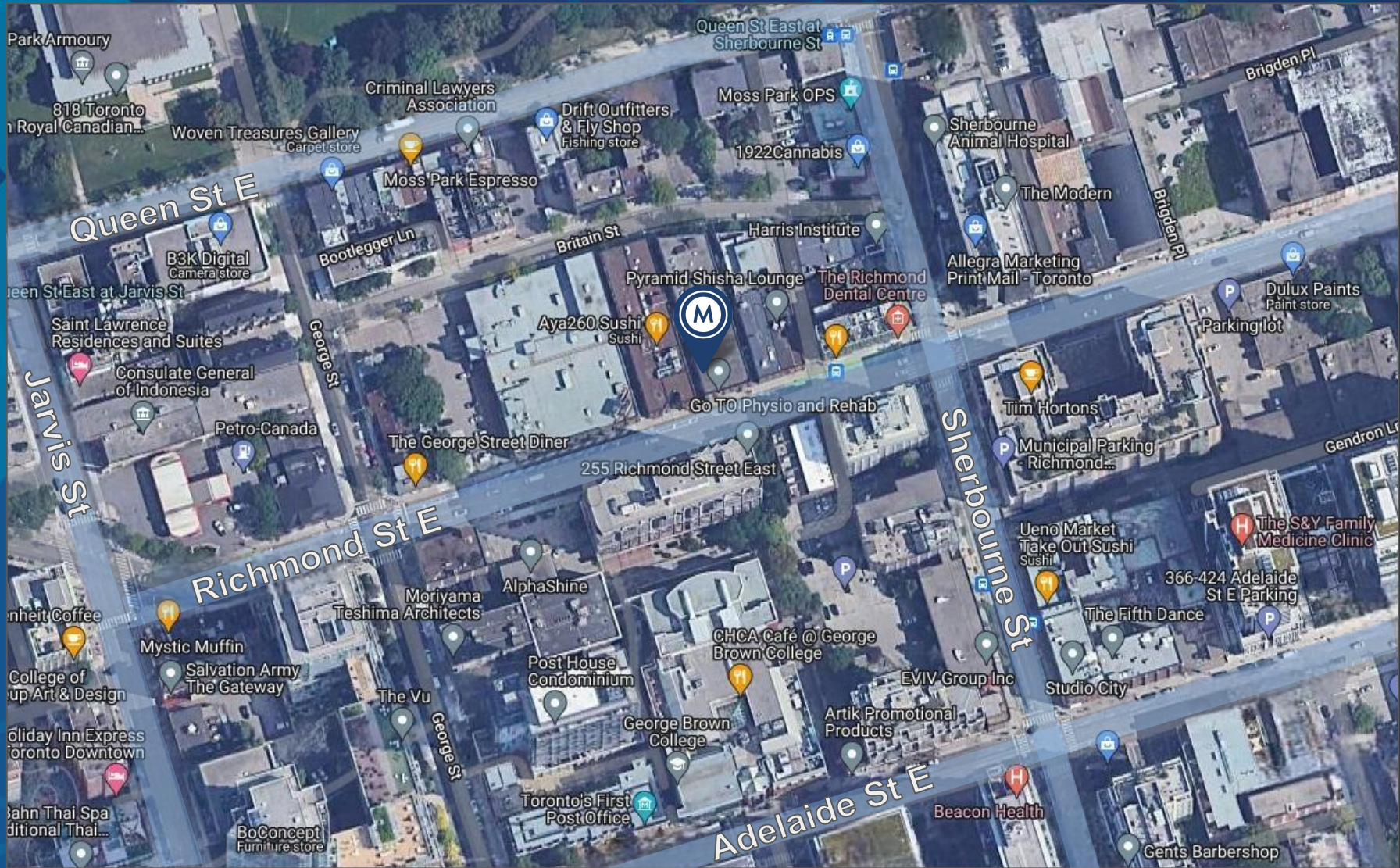


FLOOR PLANS

THIRD FLOOR - 5,250 SF



AREA MAP





METROPOLITAN COMMERCIAL

Ming Zee

President, Broker of Record

416.703.6621 x 222

ming.zee@metcomrealty.com

Steven Phillips

Sales Representative

416.703.6621 x 232

steven.phillips@metcomrealty.com

150 BEVERLEY STREET, UNIT 1

TORONTO, ON | M5T 1Y5

416.703.6621

WWW.METCOMREALTY.COM