



1005 Geneva St

1005 Geneva St, Shorewood, IL 60404

RE/MAX



Vytautas Sruoga

Remax Millennium

14134 S Bell Rd, Homer Glen, IL 60491

sruoga@gmail.com

(630) 626-9858



1005 Geneva St

\$12.65 /SF/YR

Versatile Commercial Space for Lease in Prime Location

Discover an exceptional opportunity to lease a highly adaptable commercial property at 1005 Geneva St, Shorewood, IL 60404. This versatile space is designed to meet the needs of a wide range of businesses and offers a host of standout features to support your operations.

Property Highlights:

Strategic Location: Enjoy the benefits of being less than 2 miles from I-55, providing swift and efficient access to major transportation routes, making it ideal for businesses focused on logistics and distribution.

Flexible Loading Options: This property features 6 docks, 1 drive-in bay, and 1 semi-dock door, ensuring versatile solutions for shipping, receiving, and warehousing needs, making it suitable for various industries.

Ample...



Rental Rate:	\$12.65 /SF/YR
--------------	----------------

Property Type:	Industrial
----------------	------------

Property Subtype:	Warehouse
-------------------	-----------

Rentable Building Area:	14,300 SF
-------------------------	-----------

Year Built:	1980
-------------	------

Rental Rate Mo:	\$1.06 /SF/MO
-----------------	---------------

1st Floor

Space Available	14,300 SF
Rental Rate	\$12.65 /SF/YR
Date Available	30 Days
Service Type	Net
Office Size	1,500 SF
Space Type	Relet
Space Use	Industrial
Lease Term	2 - 10 Years



1005 Geneva St, Shorewood, IL 60404

Versatile Commercial Space for Lease in Prime Location

Discover an exceptional opportunity to lease a highly adaptable commercial property at 1005 Geneva St, Shorewood, IL 60404. This versatile space is designed to meet the needs of a wide range of businesses and offers a host of standout features to support your operations.

Property Highlights:

Strategic Location: Enjoy the benefits of being less than 2 miles from I-55, providing swift and efficient access to major transportation routes, making it ideal for businesses focused on logistics and distribution.

Flexible Loading Options: This property features 6 docks, 1 drive-in bay, and 1 semi-dock door, ensuring versatile solutions for shipping, receiving, and warehousing needs, making it suitable for various industries.

Ample Parking: With 30 dedicated parking spaces available on-site, both your employees and clients will find convenient and hassle-free access to your establishment.

Generous Space: Spanning a substantial 14,300 square feet on a spacious 2.09-acre lot, this property provides room to grow and expand as your business evolves.

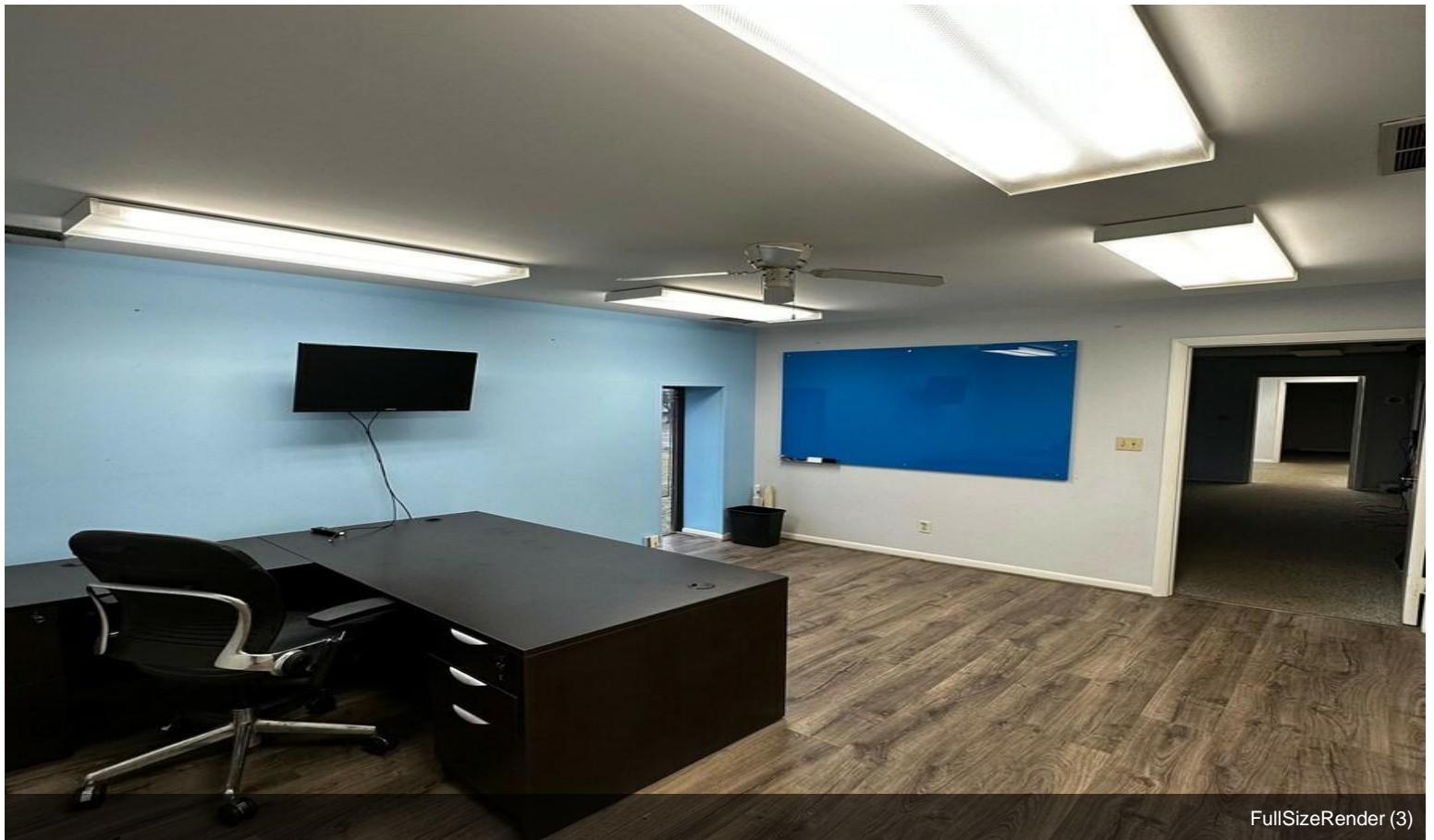
Property Details:

Property Type: Commercial Space

Total Space Available: 14,300 Square Feet

Whether you're in manufacturing, distribution, retail, or any other business, this commercial space offers the flexibility and convenience you need to thrive. Its strategic location, diverse loading options, and ample parking make it a prime choice for businesses seeking a dynamic and accessible location.

Property Photos



Property Photos

