

OFFICE SPACE FOR LEASE • NORTH STATION

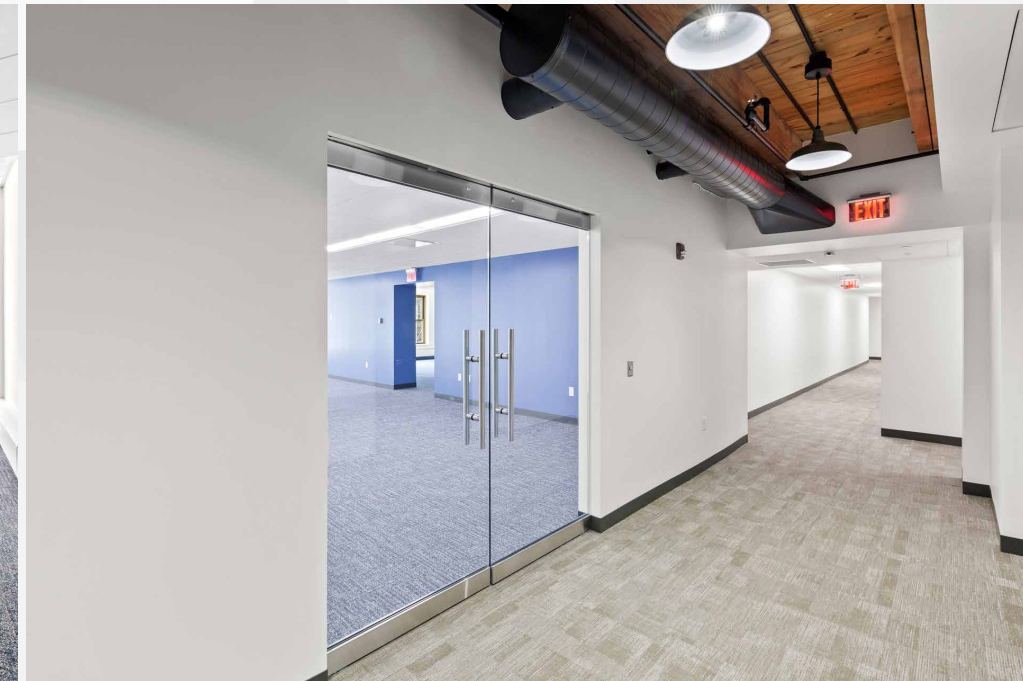


BUILDING DESCRIPTION

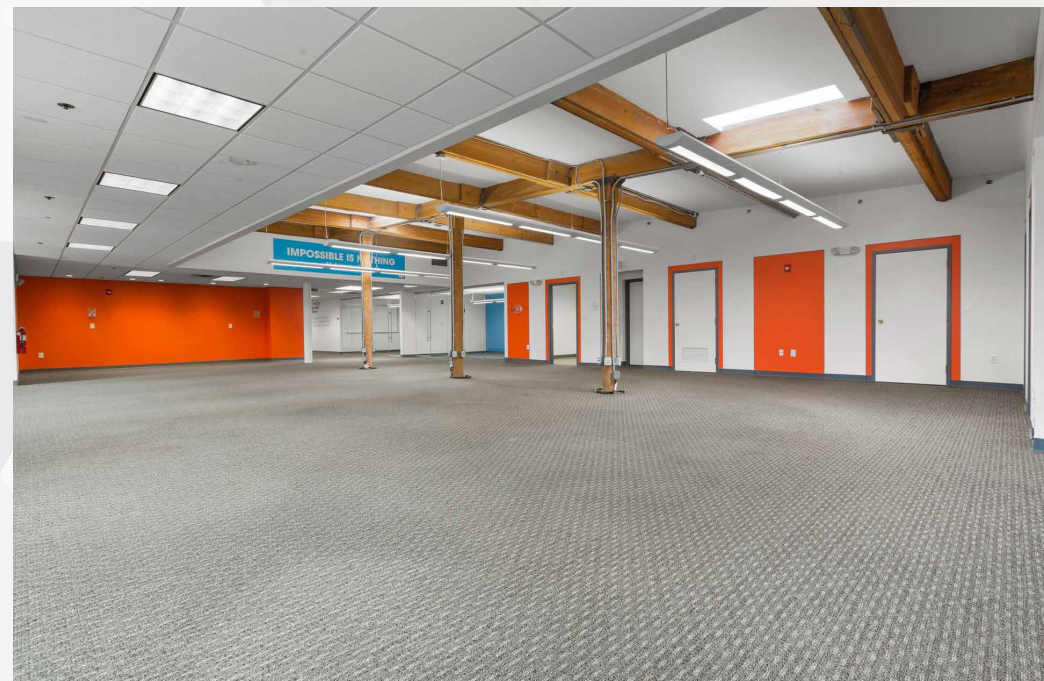
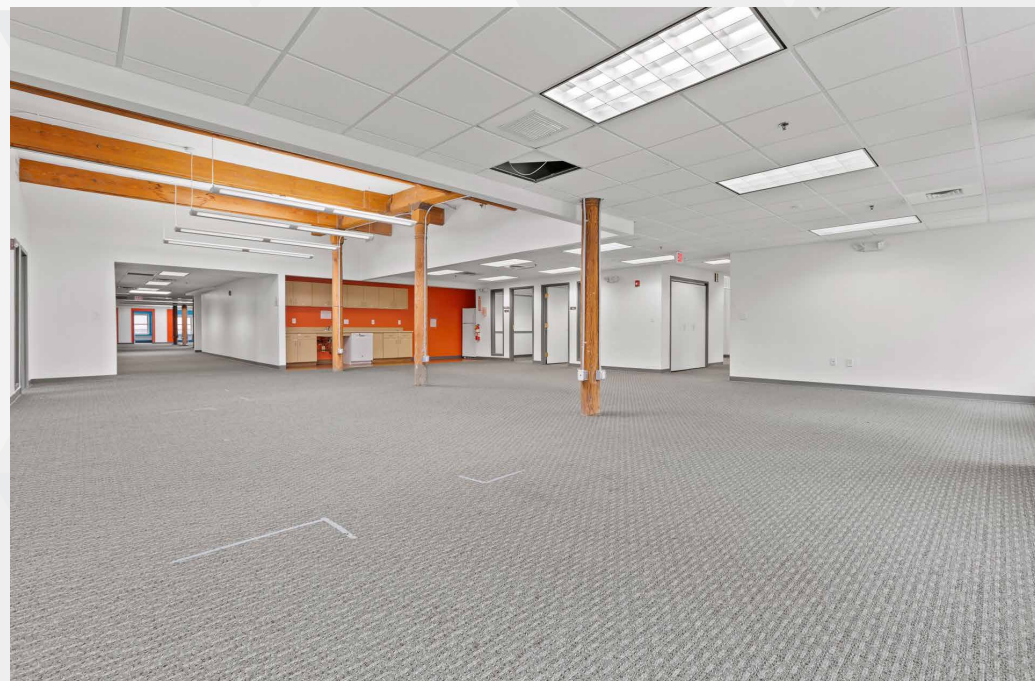
Boston Realty Advisors is pleased to present 90 Canal St in the North Station submarket. A stone's throw from Boston's newest construction, The Hub on Causeway, a new entertainment development by TD Graden. This neighborhood offers a variety of restaurants and entertainment. Easy access to 1-93 and minutes away from Haymarket (MBTA) and North Station (Commuter Rail Service). Walking through this brick exterior construction there is a recently renovated best-in-class modernized lobby entrance. The brick-and beam building offers a variety of ready to go suites accommodating various sizes. An on-site gym is available right inside the building.



5TH FLOOR



6TH FLOOR



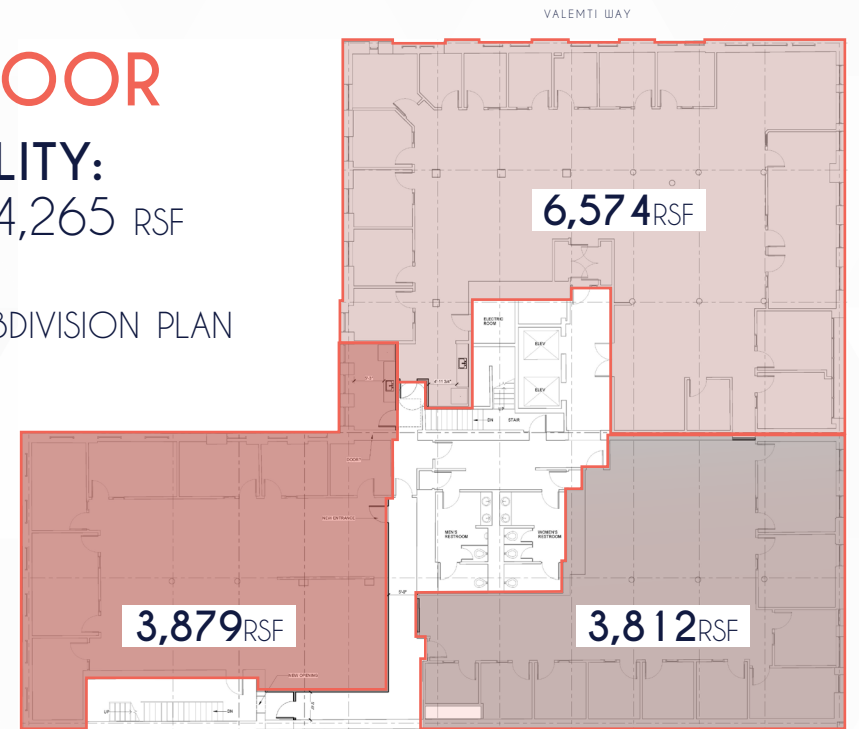
FLOOR PLANS



2ND FLOOR

AVAILABILITY:
3,812 – 14,265 RSF

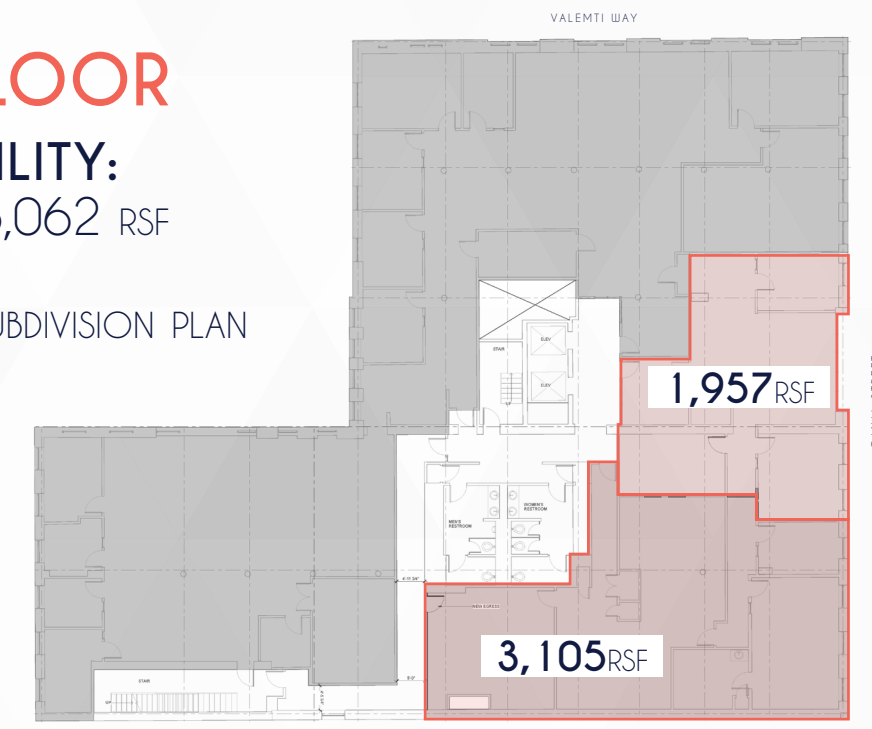
CONCEPT SUBDIVISION PLAN



3RD FLOOR

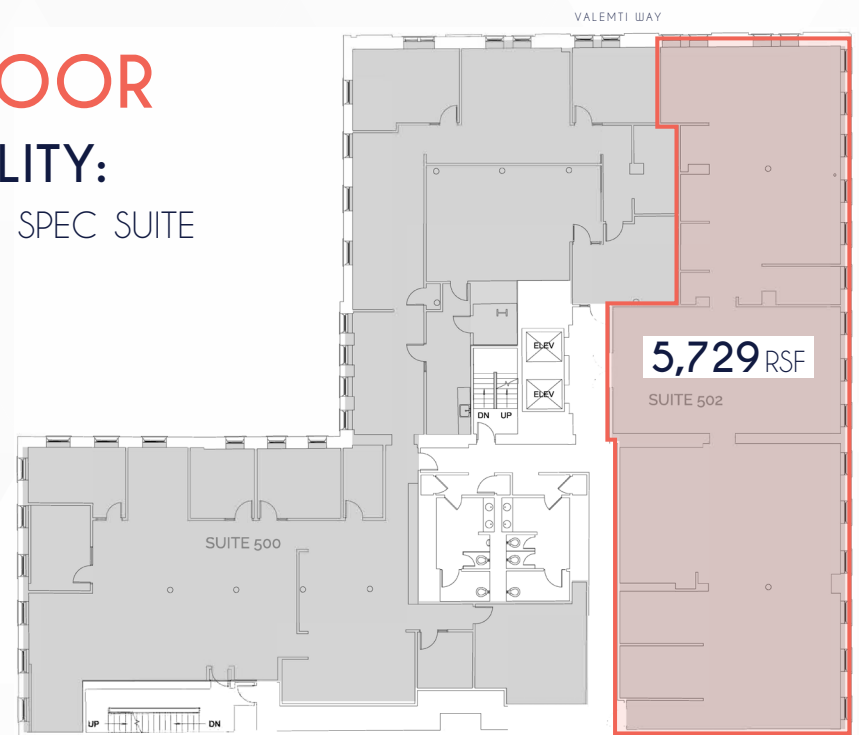
AVAILABILITY:
1,957 – 5,062 RSF

CONCEPT SUBDIVISION PLAN



5TH FLOOR

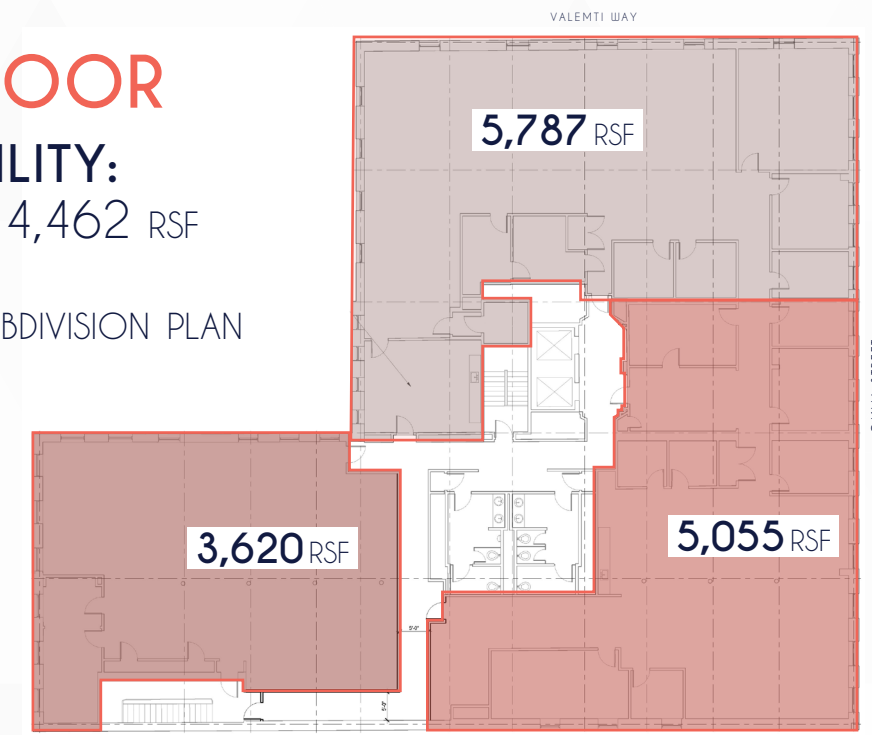
AVAILABILITY:
5,729 RSF | SPEC SUITE



6TH FLOOR

AVAILABILITY:
3,620 – 14,462 RSF

CONCEPT SUBDIVISION PLAN



FEATURES



Great access to North Station
(Commuter Rail, Orange Line
and Green Line)



On-site fitness



Abundant area amenities
including restaurants,
bars and cafés



Onsite parking available

WALK SCORE



99

TRANSIT SCORE



100



DOWNTOWN & URBAN OFFICE

ROBERT F. LECLAIR
Managing Director & Partner
617.850.9614
rleclair@bradvisors.com

JUSTIN D. HARLOW
Managing Director
617.850.9613
jharlow@bradvisors.com



136 Newbury Street | Boston, MA 02116 | 617.375.7900 | BRAdvisors.com

© Copyright Boston Realty Advisors. All rights reserved. The information contained here has been obtained through sources deemed reliable but cannot be guaranteed as to its accuracy. Any information of special interest should be obtained through independent verification.