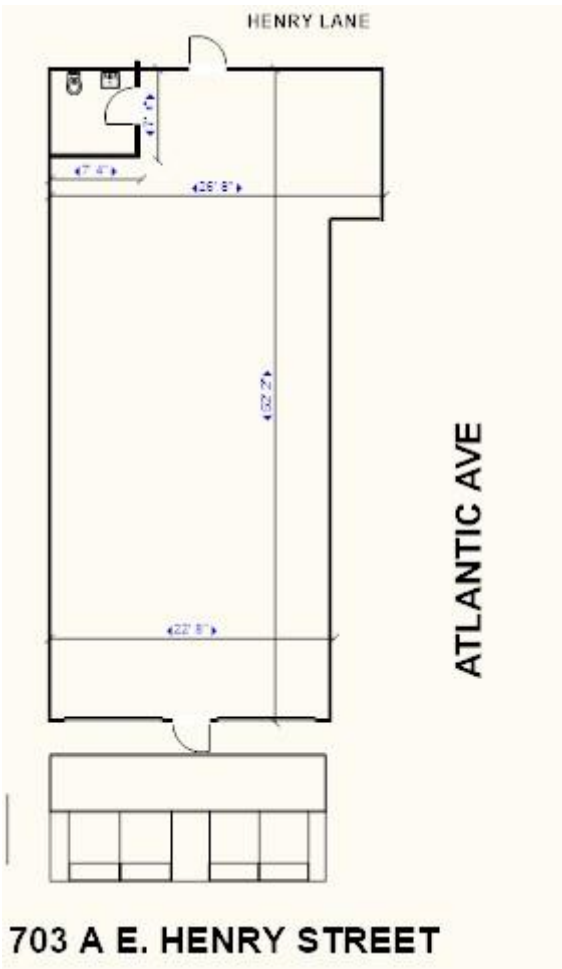


RDM Management LLC
403 W. Gaston Street, Savannah, GA. 31401
(912) 660-1200
rdmPropertyManagement.com

703A Henry Street, Savannah, GA 31401
1200 SF - \$2,595/Month

Corner Commercial location on Henry Street along highly visible corridor. Area is undergoing high growth and redevelopment. Located on the busy Henry Street Corridor connecting Truman Parkway with downtown Savannah. Located on ground level in a single story masonry building with front and rear access off Henry Lane. 12' ceiling height . New aluminum storefront entryway, upgraded electric service, 3 ton heat pump A/C system, Alarm system, electric water heater and handicap bathroom. Gas service is installed on property and ready for hookup. Located in a growing residential area with active restoration.





PROPERTY DETAILS

Building Size ±1200 SF
Address 703 A East Henry Street, Savannah, GA 31401
Location Ground Floor
Type Retail/Restaurant/Commercial
Lease NNN with Low Taxes
Zone TN-3 Flood Zone X
Cross Street Atlantic Ave
HVAC – Electric 3 Ton Heat Pump
Ceiling Height 12 Feet
Fenced in rear yard
Water and Sewer upgrades to City Mains
Water Meter with Backflow - Electric Water Heater
Upgraded Electric with 200 Amp service
Gas Service on property
Walking Score 69/100 - Biking Score 77/100

Location Highlights

Highly visible corridor location along Henry Street

Cat Bus 31 Stop

Within high-growth and redevelopment area
Over 14 Million Visitors to Savannah/year

