

11359 SUNRISE GOLD CIRCLE

RANCHO CORDOVA, CA

SUITE B - ±2,880 SF WAREHOUSE SPACE AVAILABLE FOR LEASE



NEWMARK

JOE CURTIS | Managing Director
916.569.2373
joe.curtis@nrmk.com
CA RE License #01338980

JESSI MULJAT | Associate
916.569.2335
jessi.muljat@nrmk.com
CA RE License #02191822

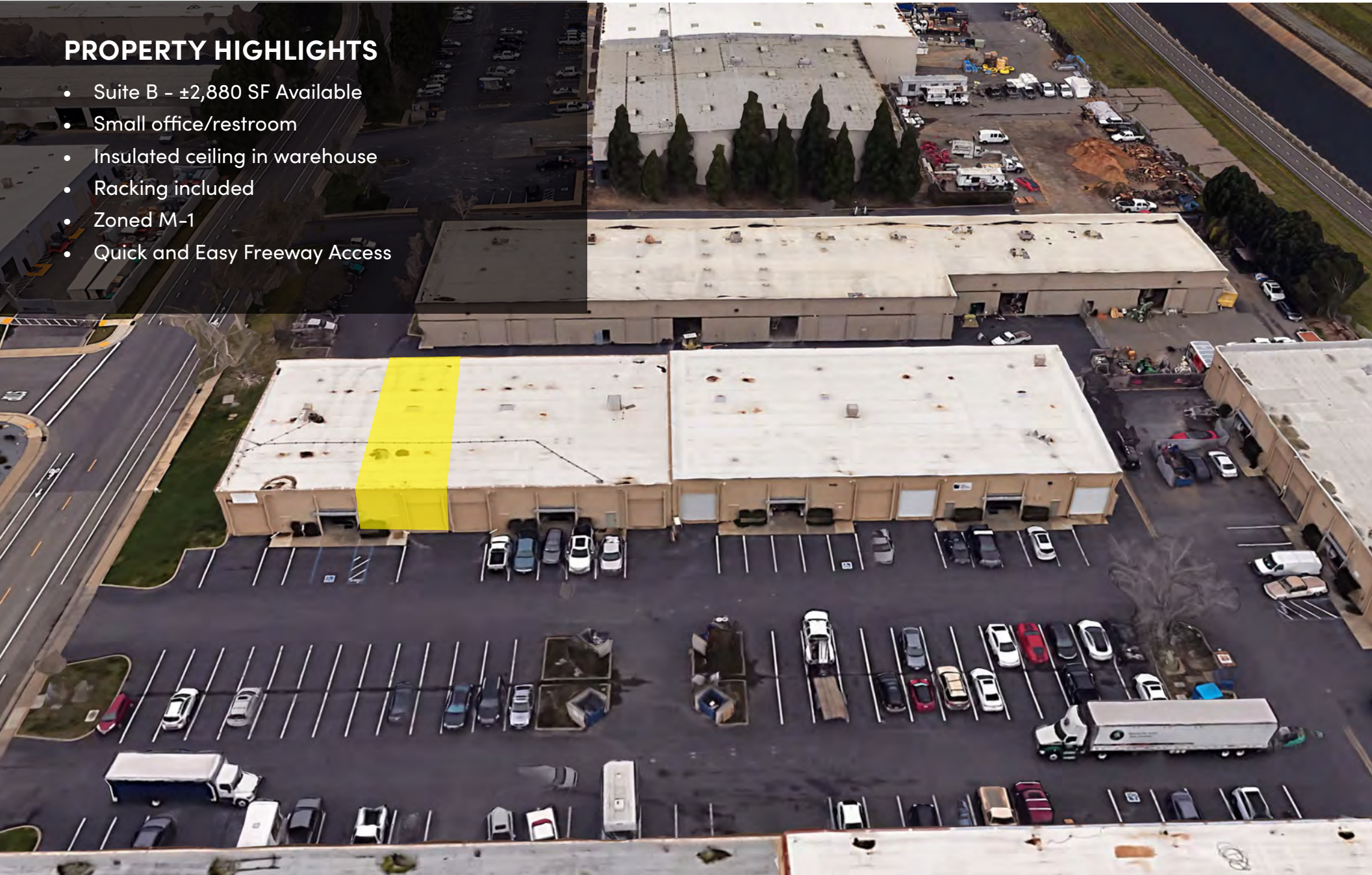
11359 SUNRISE GOLD CIRCLE

RANCHO CORDOVA, CA

SUITE B - ±2,880 SF WAREHOUSE SPACE AVAILABLE FOR LEASE

PROPERTY HIGHLIGHTS

- Suite B - ±2,880 SF Available
- Small office/restroom
- Insulated ceiling in warehouse
- Racking included
- Zoned M-1
- Quick and Easy Freeway Access

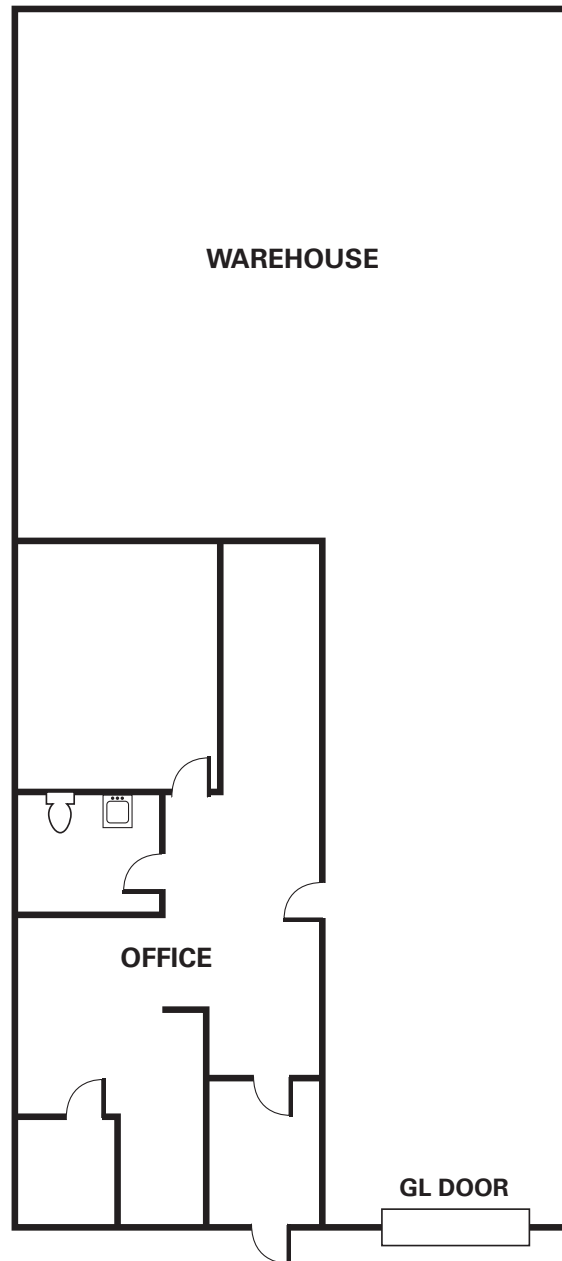


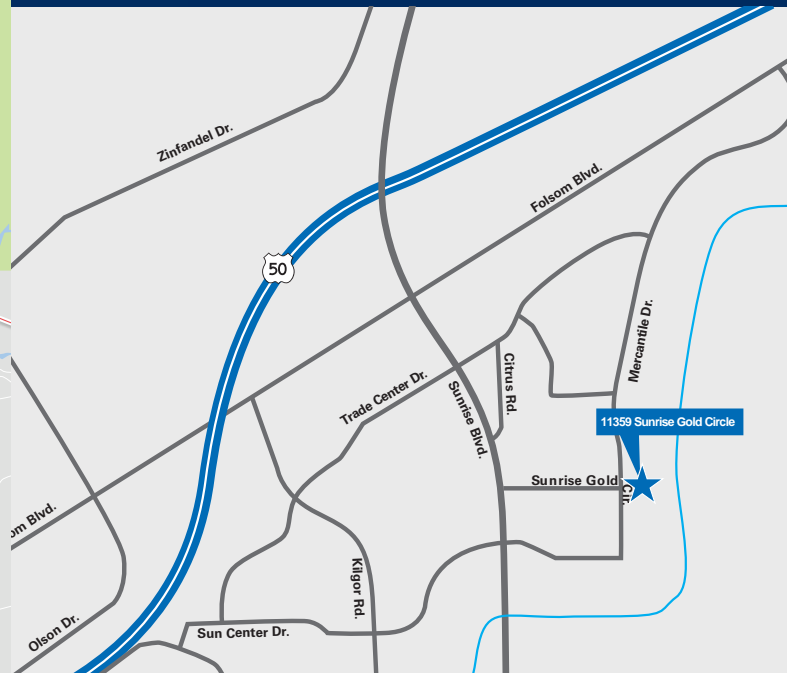
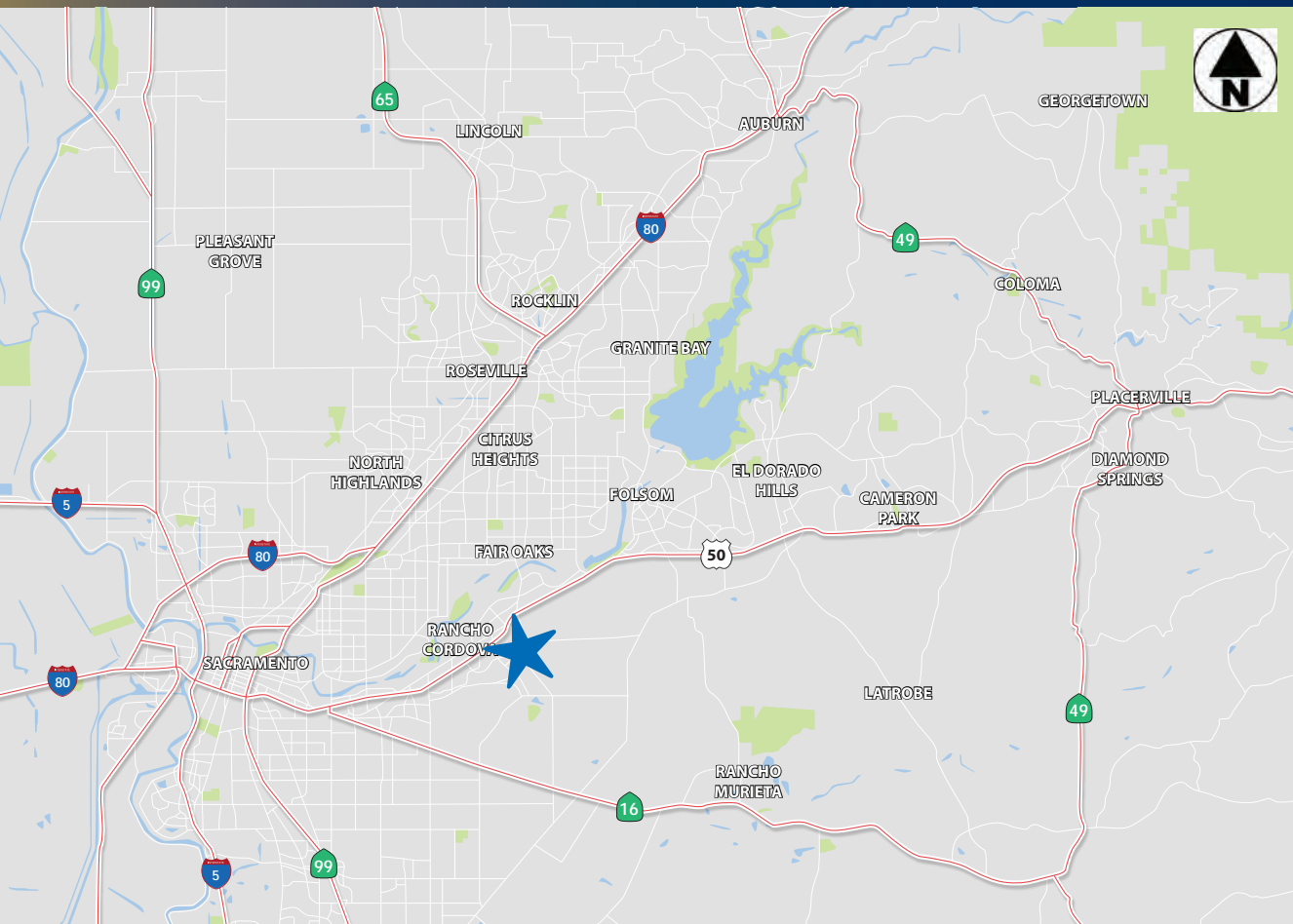
11359
SUNRISE GOLD CIRCLE

RANCHO CORDOVA, CA

SUITE B - ±2,880 SF WAREHOUSE SPACE AVAILABLE FOR LEASE

FLOOR PLAN - SUITE B





**11359
SUNRISE GOLD CIRCLE**

RANCHO CORDOVA, CA

JOE CURTIS | Managing Director
916.569.2373
joe.curtis@nmrk.com
CA RE License #01338980

JESSI MULJAT | Associate
916.569.2335
jessi.muljat@nmrk.com
CA RE License #02191822

NEWMARK

The distributor of this communication is performing acts for which a real estate license is required. The information contained herein has been obtained from sources deemed reliable but has not been verified and no guarantee, warranty or representation, either express or implied, is made with respect to such information. Terms of sale or lease and availability are subject to change or withdrawal without notice. 01/25