

FOOTHILLS COMMERCE CENTER

Roseville, California • Lot 6 (3 bldgs), $\pm 36,227$ SF Total

FOR LEASE

NOW UNDER
CONSTRUCTION



ROSEVILLE'S PREMIER INDUSTRIAL PARK

AVAILABLE SQ. FT.:

(3) Buildings Totaling $\pm 36,227$ SF

- Building B $\pm 8,232$ SF
- Building C $\pm 11,129$ SF
- Building D $\pm 16,866$ SF

FEATURES:

- Available 4th Quarter, 2008
- Concrete tilt construction
- Monument signage available
- Zoning: MI (light industrial)
- Excellent Hwy 65 access via Blue Oaks Blvd.
- Professionally managed by Stanford Ranch

LEASE RATE:

Call for quote

BUILDING B, C & D:

- Divisible to $\pm 1,600$, spec suites available
- Grade level doors $\pm 12' \times 14'$
- 1600 Amp, 480 Volt Power
- $\pm 18'$ Clear height
- 4:1000 Parking
- Sprinkler density: .45/2000

AN INVESTMENT OF:

MARK  CAPITAL

A DEVELOPMENT OF:

STANFORD  RANCH

For Further Information Please Contact:

TODD SANFILIPPO

916.781.4859

WALTER SMYTH

916.781.4843

1512 Eureka Road, Suite 100
Roseville, CA 95661

CBRE

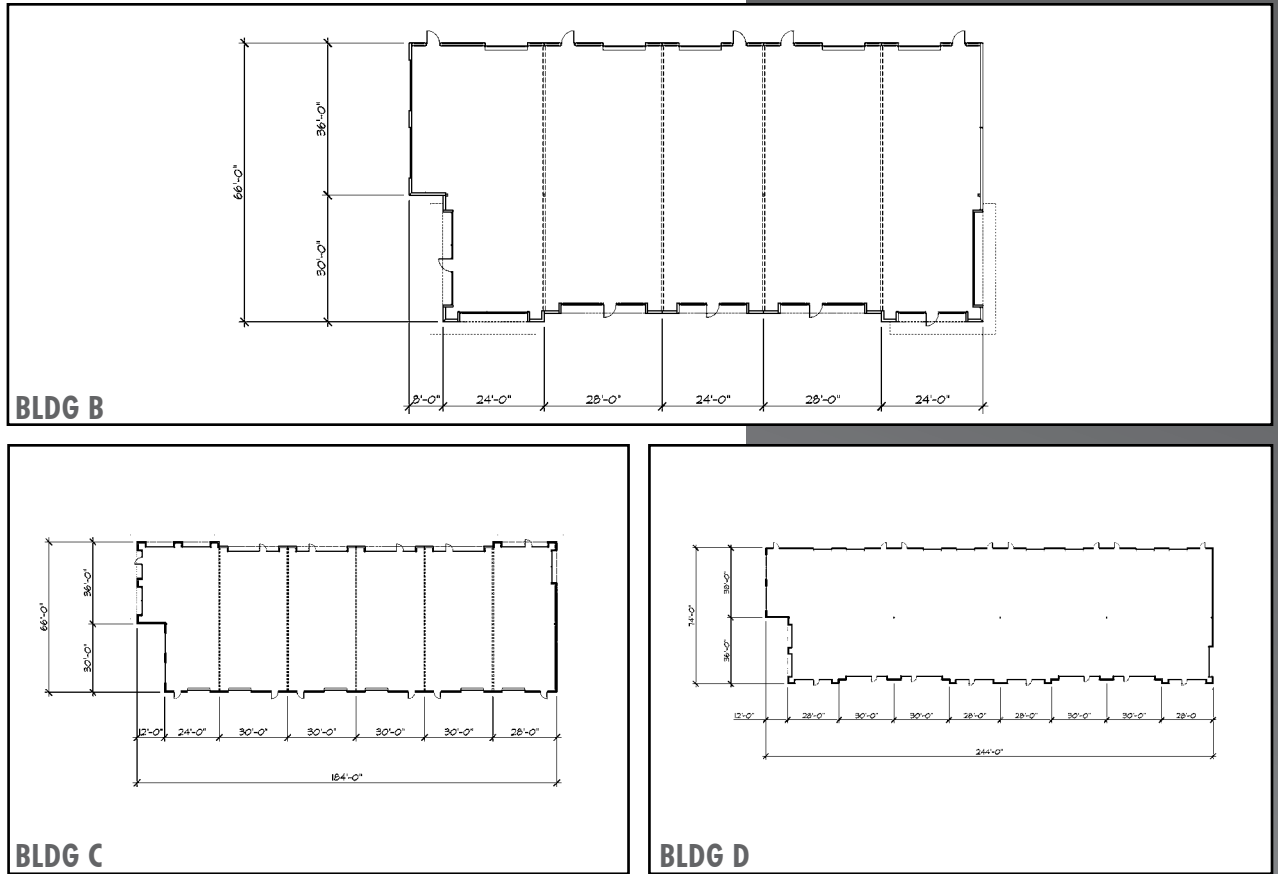
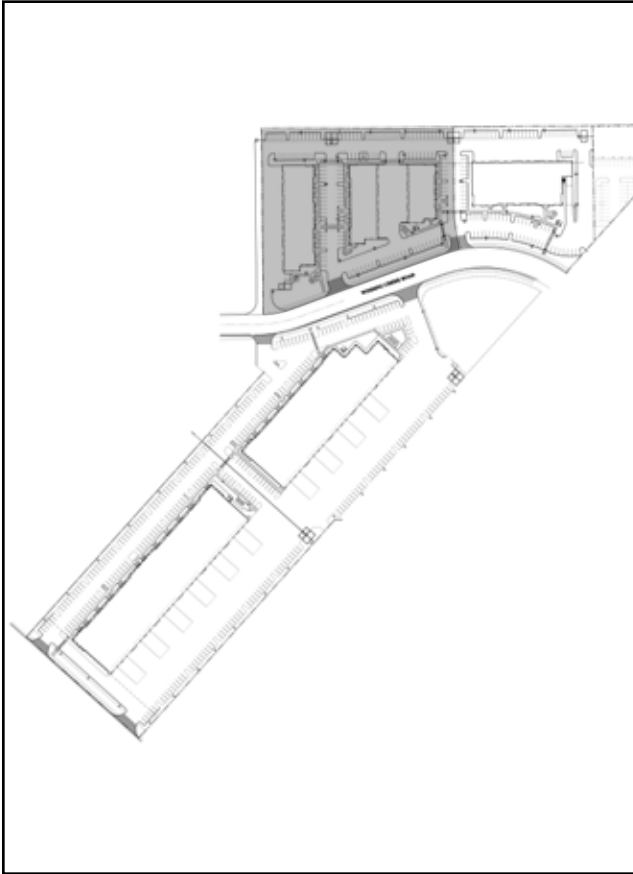
CB RICHARD ELLIS

www.cbre.com/roseville

FOOTHILLS COMMERCE CENTER

Roseville, California • Lot 6 (3 bldgs), ±36,227 SF Total

FOR LEASE



SITE

NOT TO SCALE -- ALL DIMENSIONS ARE APPROXIMATE.

CBRE
CB RICHARD ELLIS

© 2008 CB Richard Ellis, Inc. | We obtained the information above from sources we believe to be reliable. However, we have not verified its accuracy and make no guarantee, warranty or representation about it. It is submitted subject to the possibility of errors, omissions, change of price, rental or other conditions, prior sale, lease or financing, or withdrawal without notice. We include projections, opinions, assumptions or estimates for example only, and they may not represent current or future performance of the property. You and your tax and legal advisors should conduct your own investigation of the property and transaction. 70228088-5526-20514

For Further Information Please Contact:

TODD SANFILIPPO
916.781.4859

WALTER SMYTH
916.781.4843

1512 Eureka Road, Suite 100
Roseville, CA 95661