



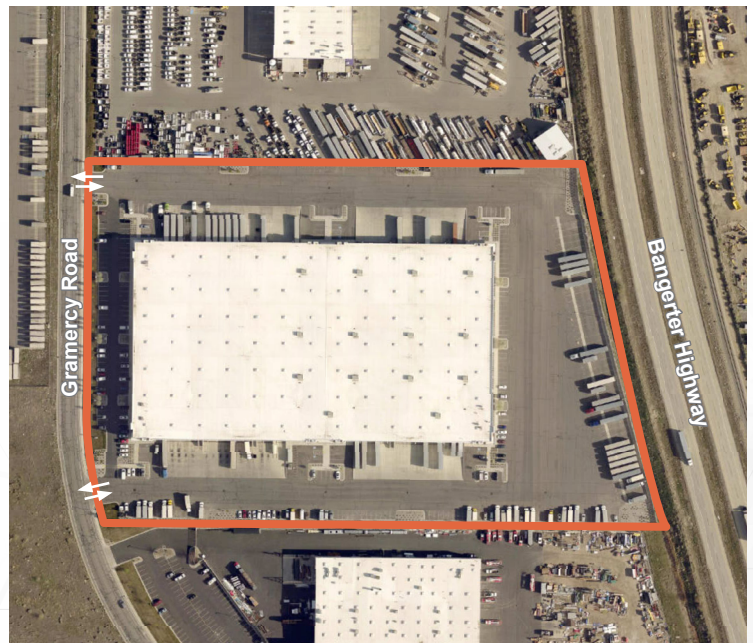
PRICE CALIFORNIA V

1555 S. GRAMERCY RD.
SALT LAKE CITY, UT 84104

AVAILABLE FOR LEASE: 55,075 TOTAL SF

PROPERTY FEATURES:

- 55,075 Total Square Feet
 - 2,521 Office Square Feet
 - 52,554 Warehouse Square Feet
- 32' Clear Height
- Loading:
 - Fourteen (14) Dock High Doors
 - Eight (8) Dock High Doors Equipped with Dock Seals, Bumpers, and Pit Levelers
 - Six (6) Dock High Doors Equipped with Dock Seals and Bumpers
- One (1) Ground Level Door
- Excellent Access to I-80, I-215, I-15, and Bangerter Highway
- Bangerter Highway Frontage
- Minutes from Salt Lake International Airport
- Power: 400 Amps
480/277 V/3 Phase
- Lighting:
 - LED Fixtures in Office
 - T5 Fluorescent in Warehouse



LISTED BY:

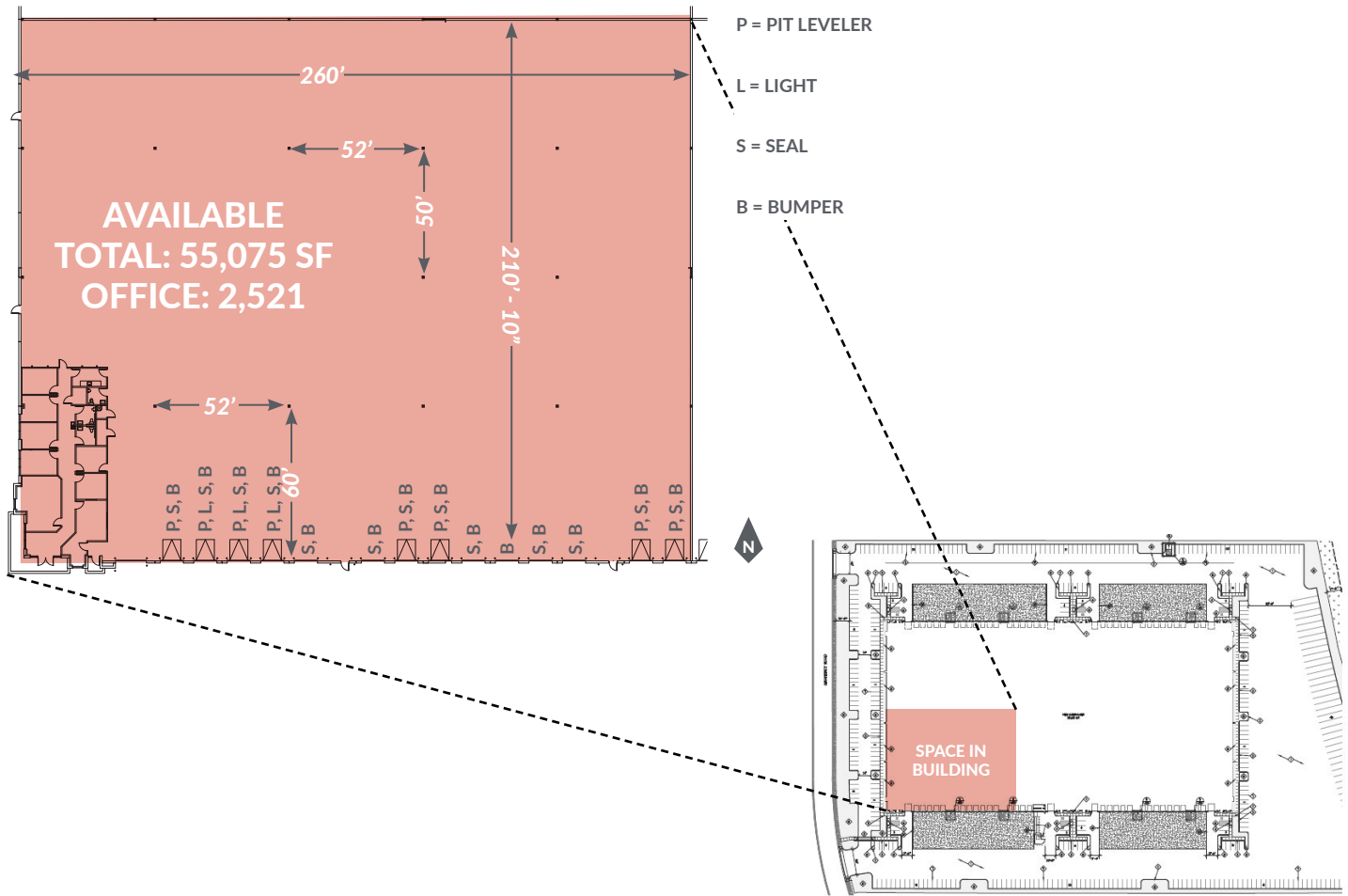
Kyle Roberts, CCIM, SIOR
t 801-578-5525
kyle.roberts@nrmk.com

Kelsie Akiyama
t 801-578-5504
kelsie.akiyama@nrmk.com

NEWMARK

ANOTHER INNOVATIVE
DEVELOPMENT BY

 **PRICE**
REAL ESTATE



PROPERTY FEATURES:

55,075 Total Square Feet

- 2,521 Office Square Feet
- 52,554 Warehouse Square Feet

32' Clear Height

Loading:

- Fourteen (14) Dock High Doors
- Eight (8) Dock High Doors Equipped with Dock Seals, Bumpers and Pit Levelers
- Six (6) Dock High Doors Equipped with Dock Seals and Bumpers
- One (1) Ground Level Door

Excellent Access to I-80, I-215, I-15, and Bangerter Highway

ESFR Fire Suppression

R24 Roof Insulation

Bangerter Highway Frontage

Minutes from Salt Lake International Airport

Power: 400 Amps 480/277 V/3 Phase

Lighting:

- LED Fixtures in Office
- T5 Fluorescent in Warehouse

LISTED BY:

Kyle Roberts, CCIM, SIOR

t 801-578-5525

kyle.roberts@nmrk.com

Kelsie Akiyama

t 801-578-5504

kelsie.akiyama@nmrk.com



LISTED BY:

Kyle Roberts, CCIM, SIOR

t 801-578-5525

kyle.roberts@nmrk.com

Kelsie Akiyama

t 801-578-5504

kelsie.akiyama@nmrk.com