

FOR SALE



2% BUYER BROKER BONUS

14124 N NEWPORT HWY, MEAD, WA 99021

| | |
|-------------------|--|
| BUILDING AREA | ±3,840 SF |
| GROUND FLOOR | ±1,920 SF |
| LOWER LEVEL | ±1,920 SF |
| CANOPY/DRIVE-THRU | ±1,125 SF; 3 lanes |
| YEAR BUILT | 1999 |
| LAND AREA | ±38,896 SF (0.89 Acres) |
| PARCEL NO. | Land Parcel: 36031.0203 Building Parcel: 36031.0169 |
| PARKING | ±29 stalls |
| ZONING | Limited Development Area Commercial (LDAC) |
| VACANT | Ready for Occupancy |

3,840 SF

AVAILABLE

\$1.35M

SALE PRICE

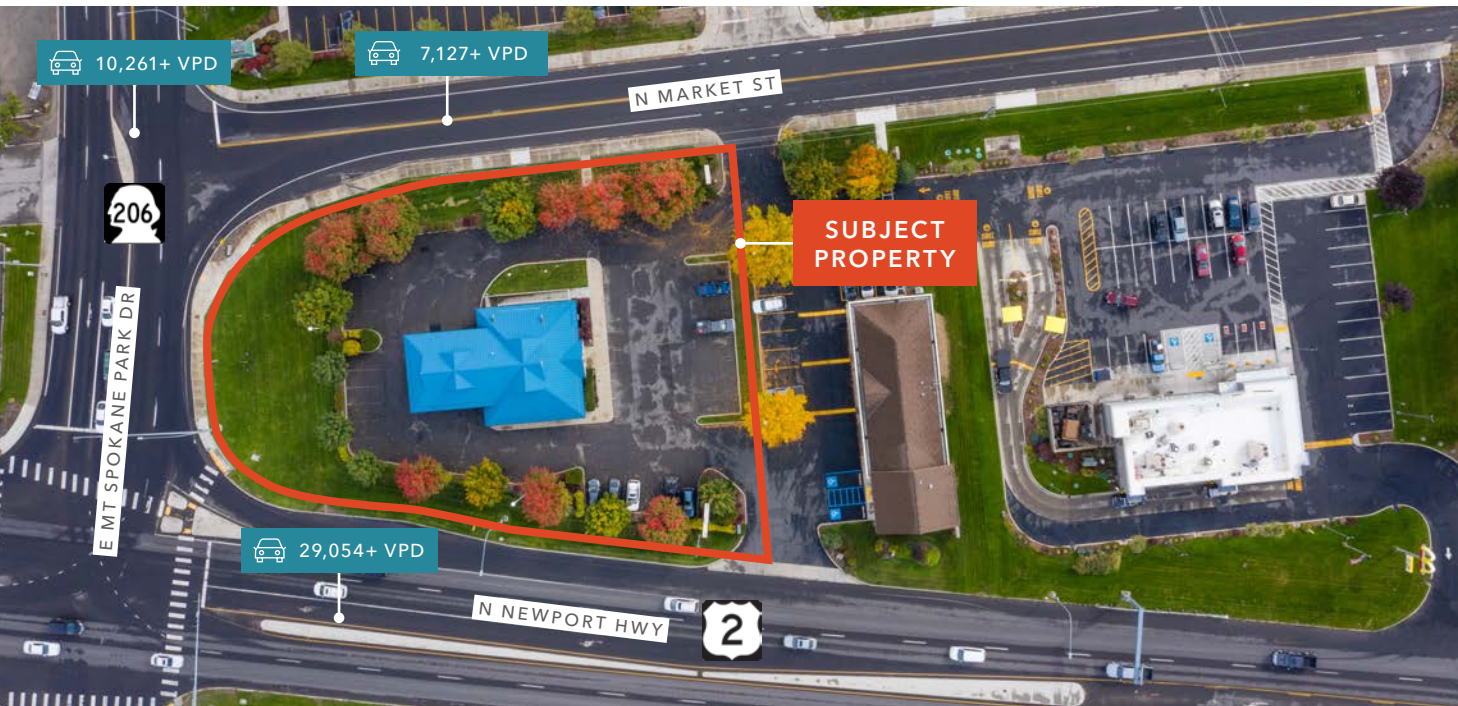
JOE DEJAGER 503.706.6197 | joe.dejager@kidder.com

Joe DeJager is a licensed real estate agent in the State of Washington and has an ownership interest in the property.

KIDDER.COM

This information supplied herein is from sources we deem reliable. It is provided without any representation, warranty, or guarantee, expressed or implied as to its accuracy. Prospective Buyer or Tenant should conduct an independent investigation and verification of all matters deemed to be material, including, but not limited to, statements of income and expenses. Consult your attorney, accountant, or other professional advisor.





PROPERTY HIGHLIGHTS

Lighted intersection of Newport Hwy & E Mt Spokane Park Dr

Access via Newport Hwy & Market St

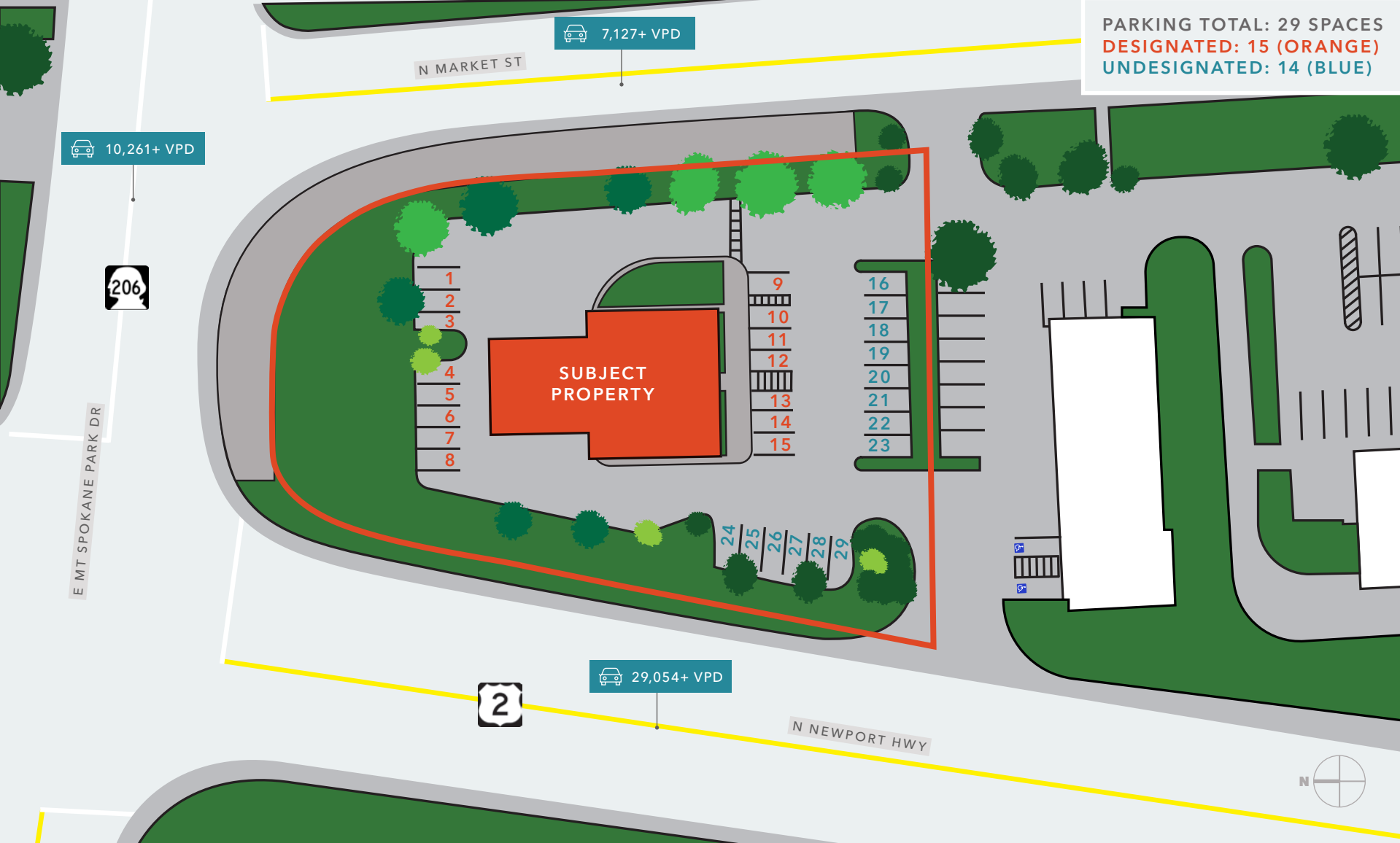
All utilities available to site

NEARBY BUSINESSES, RESTAURANTS & RETAILERS

| | |
|------------------------------|-----------------------|
| McDonald's | Spokane Motorschool |
| Yoke's | Arby's |
| Chevron | Bruchi's Cheesesteaks |
| Hop Mountain Taproom & Grill | Keylock Storage |
| Highway Grind | Miramac Metals |
| Alderwood RV Resort | Frawesome Babrershop |
| Snap Fitness Mt. Spokane | |

KIDDER.COM

This information supplied herein is from sources we deem reliable. It is provided without any representation, warranty, or guarantee, expressed or implied as to its accuracy. Prospective Buyer or Tenant should conduct an independent investigation and verification of all matters deemed to be material, including, but not limited to, statements of income and expenses. Consult your attorney, accountant, or other professional advisor.



DEMOGRAPHICS

POPULATION

| | 1 Mile | 3 Miles | 5 Miles |
|----------------|--------|---------|---------|
| 2010 CENSUS | 3,730 | 18,281 | 50,617 |
| 2020 CENSUS | 4,125 | 23,207 | 59,218 |
| 2024 ESTIMATED | 3,944 | 22,408 | 59,108 |
| 2029 PROJECTED | 3,867 | 22,216 | 58,713 |

MEDIAN AGE & GENDER

| | 1 Mile | 3 Miles | 5 Miles |
|------------|--------|---------|---------|
| MEDIAN AGE | 45.6 | 43.3 | 39.0 |
| % FEMALE | 50.8% | 50.8% | 49.9% |
| % MALE | 49.2% | 49.2% | 50.1% |

HOUSEHOLD INCOME

| | 1 Mile | 3 Miles | 5 Miles |
|------------------------|-----------|-----------|-----------|
| 2024 MEDIAN | \$86,618 | \$96,103 | \$88,310 |
| 2029 MEDIAN PROJECTED | \$87,109 | \$97,763 | \$89,729 |
| 2024 AVERAGE | \$108,723 | \$128,898 | \$120,187 |
| 2029 AVERAGE PROJECTED | \$115,322 | \$135,101 | \$125,458 |

Data Source: ©2023, Sites USA



KIDDER.COM

This information supplied herein is from sources we deem reliable. It is provided without any representation, warranty, or guarantee, expressed or implied as to its accuracy. Prospective Buyer or Tenant should conduct an independent investigation and verification of all matters deemed to be material, including, but not limited to, statements of income and expenses. Consult your attorney, accountant, or other professional advisor.