



COMMERCIAL
ASSET GROUP

THE LARCHMONT PROFESSIONALS BUILDING



Newly Remodeled Boutique Office Spaces
For Lease On Prime Larchmont Blvd

444 N. Larchmont Blvd, Los Angeles, CA 90004

PROPERTY INFO

**CLICK FOR
PROPERTY VIDEO**

RENTAL RATE:
\$6.00 PSF/MO, FSG

PARKING:
2/1,000 SF

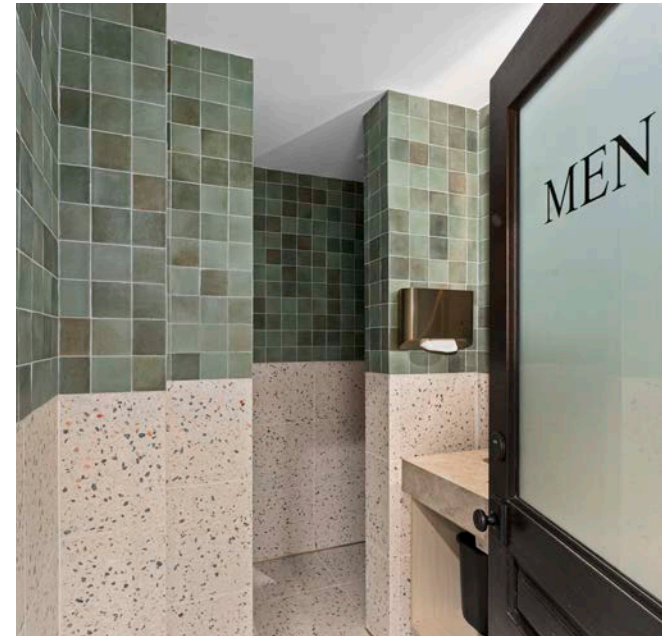
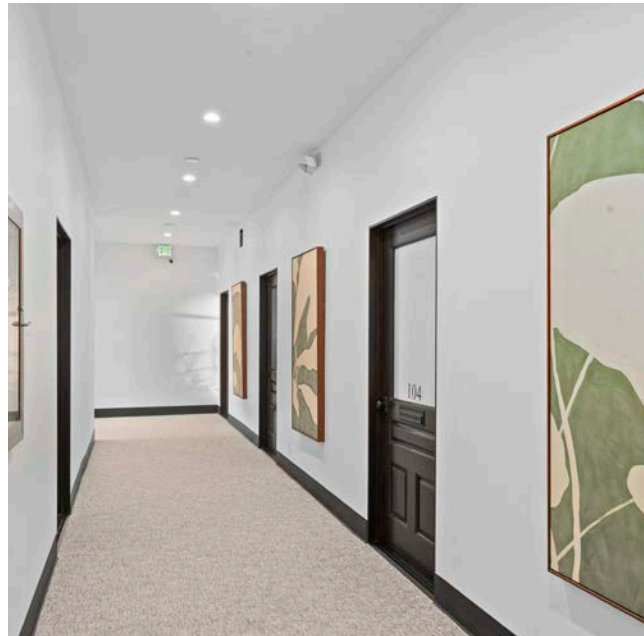
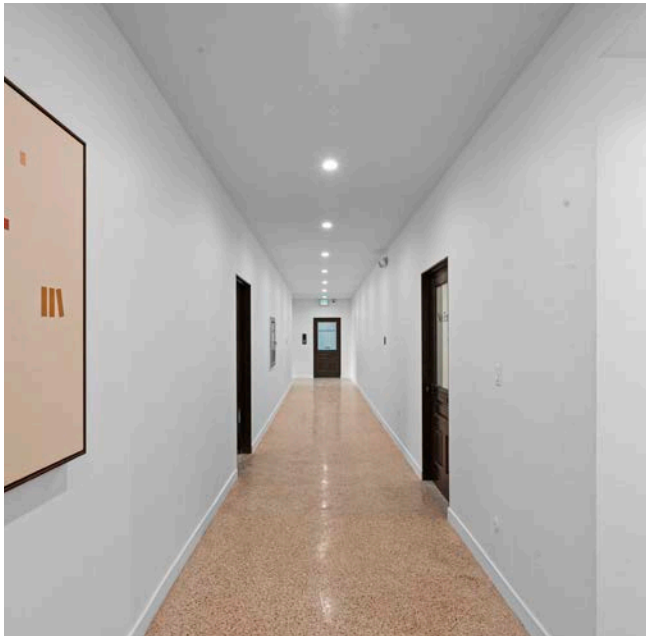
SUITE	RSF (±)	AVAILABLE
100	968	SPEC SUITE
101	905	SPEC SUITE
103	337	RENOVATED TO SUIT
104	392	SPEC SUITE
105	372	RENOVATED TO SUIT
107	1,058	RENOVATED TO SUIT
108	522	RENOVATED TO SUIT
203	1,025	RENOVATED TO SUIT
205	694	RENOVATED TO SUIT

***SOME SPACES CAN BE COMBINED**

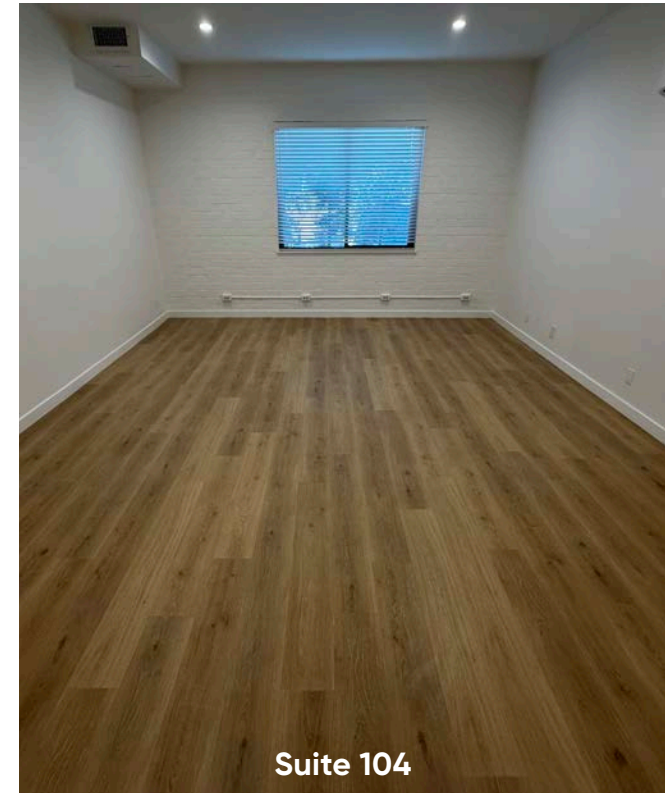
- Fully renovated offices on North Larchmont Blvd, one block up from the main drag
- Above average parking for Larchmont in the rear of the building
- Non-renovated spaces to be built to suit
- Walking distance to many great restaurants, cafes, and bakeries on Larchmont

444 N. Larchmont Blvd, Los Angeles, CA 90004

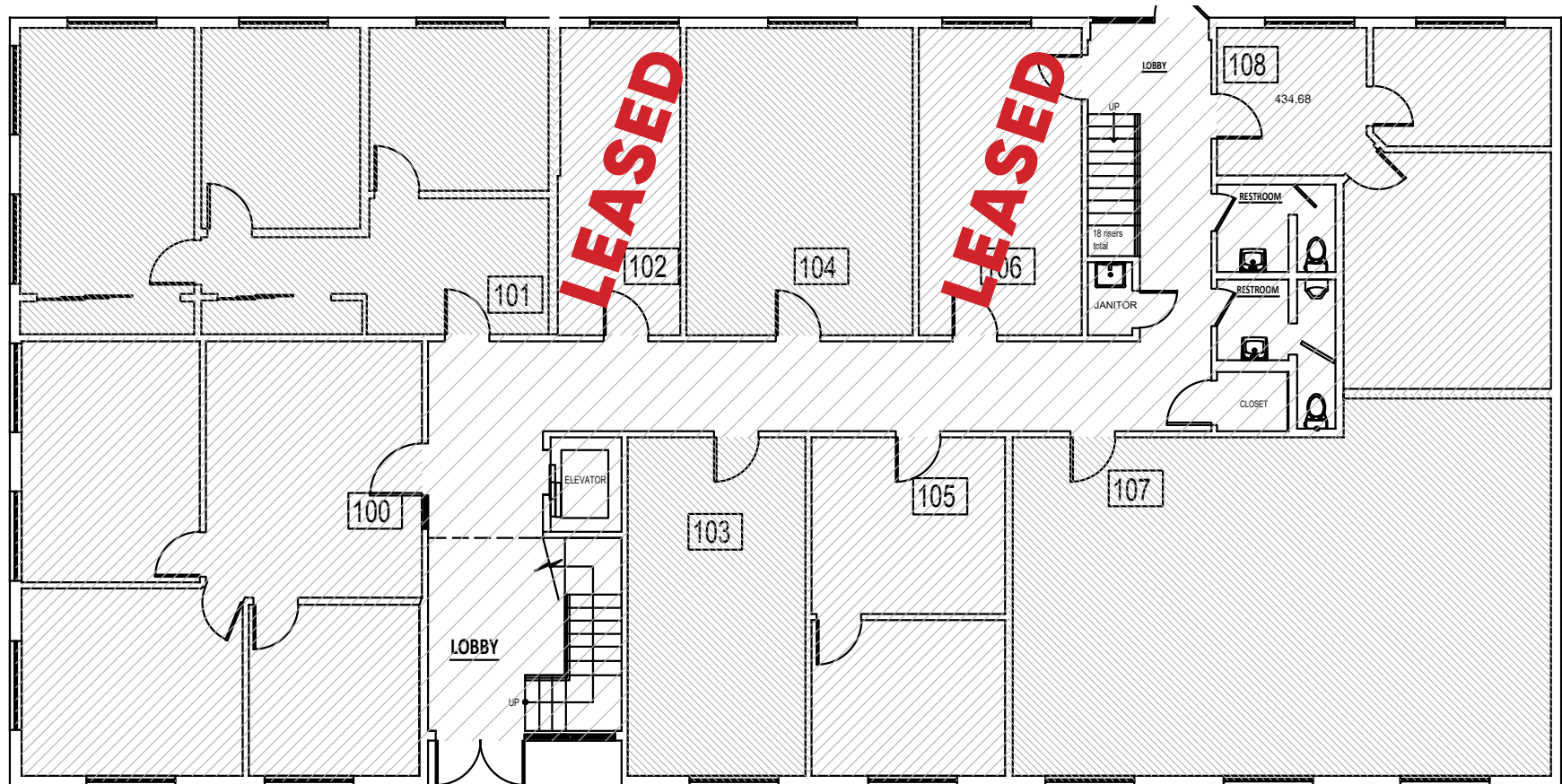
INTERIOR PHOTOS



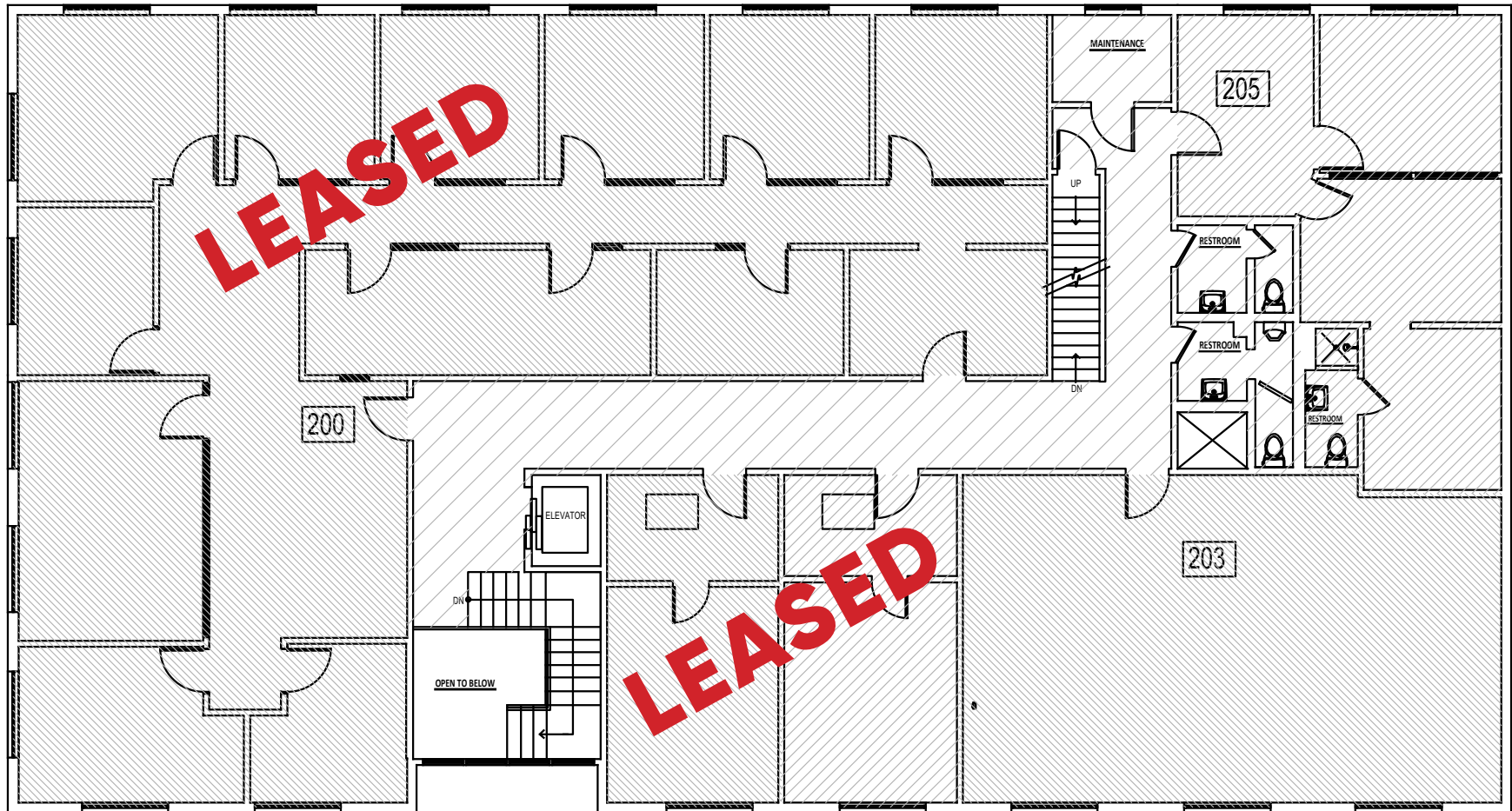
SPACE PHOTOS (CLICK PHOTO FOR VIDEO)



FIRST FLOOR PLAN



SECOND FLOOR PLAN



AERIAL



444 N. Larchmont Blvd, Los Angeles, CA 90004



COMMERCIAL ASSET GROUP

These materials are based on information and content provided by others, which we believe are accurate. No guarantee, warranty or representation is made by Commercial Asset Group, Inc. or its personnel. All interested parties must independently verify accuracy and completeness. As well, any projections, assumptions, opinion, or estimates are used for example only and do not represent the current or future performance of the identified property. Your tax, financial, legal and toxic substance advisors should conduct a careful investigation of the property and its suitability for your needs, including land use limitations. The property is subject to prior lease, sale, change in price, or withdrawal from the market without notice.



DAVID ASCHKENASY
EXECUTIVE VICE PRESIDENT
P: 310.272.7381
E: DAVIDA@CAGRE.COM
LIC. 01714442

DAVID ICKOVICS
PRINCIPAL
P: 310.272.7380
E: DJI@CAGRE.COM
LIC. 01315424

COMMERCIAL ASSET GROUP
190 N. CANON DRIVE, STE 300
BEVERLY HILLS, CA 90210
P: 310.275.8222 F: 310.275.8223
CAGRE.COM LIC: 01876070