

LAND AT I-81 & AIRPORT PKWY

Millennium Drive & Shipley Ferry Road
Kingsport, TN 37663

Location

Just off I-81, exit 63

Available for Sale

Tract 4: 5.44 acres - \$456,500

Highlights

Can be subdivided

Approx. 0.2 miles from I-81, exit 63

Approx. 2.5 miles from Tri-Cities Airport

Approx. 2.5 miles from Northeast State Comm. College

Across from Southeast Freight Lines

Proximal to hotels, restaurants and shopping

Zoned B-3, Highway Oriented Business District

Traffic Counts

I-81 near exit 63: 49,330 (2022)

Demographics

(2023 Est.)	3 mile	5 mile	10 mile
Population	7,253	31,432	144,815
Median HH Income	\$78,768	\$68,577	\$56,424
Median Age	49.5	47.4	46.1

Contact

Marc Murphy, CCIM
mmurphy@mitchcox.com

John Speropulos, CCIM, SIOR
john@mitchcox.com

☎ 423-282-6582 | 📠 423-282-5903
www.mitchcox.com





★ Subject

Northeast State
Community
College

Tri-Cities
Airport

81

81

357
63

81

81

81

75

357

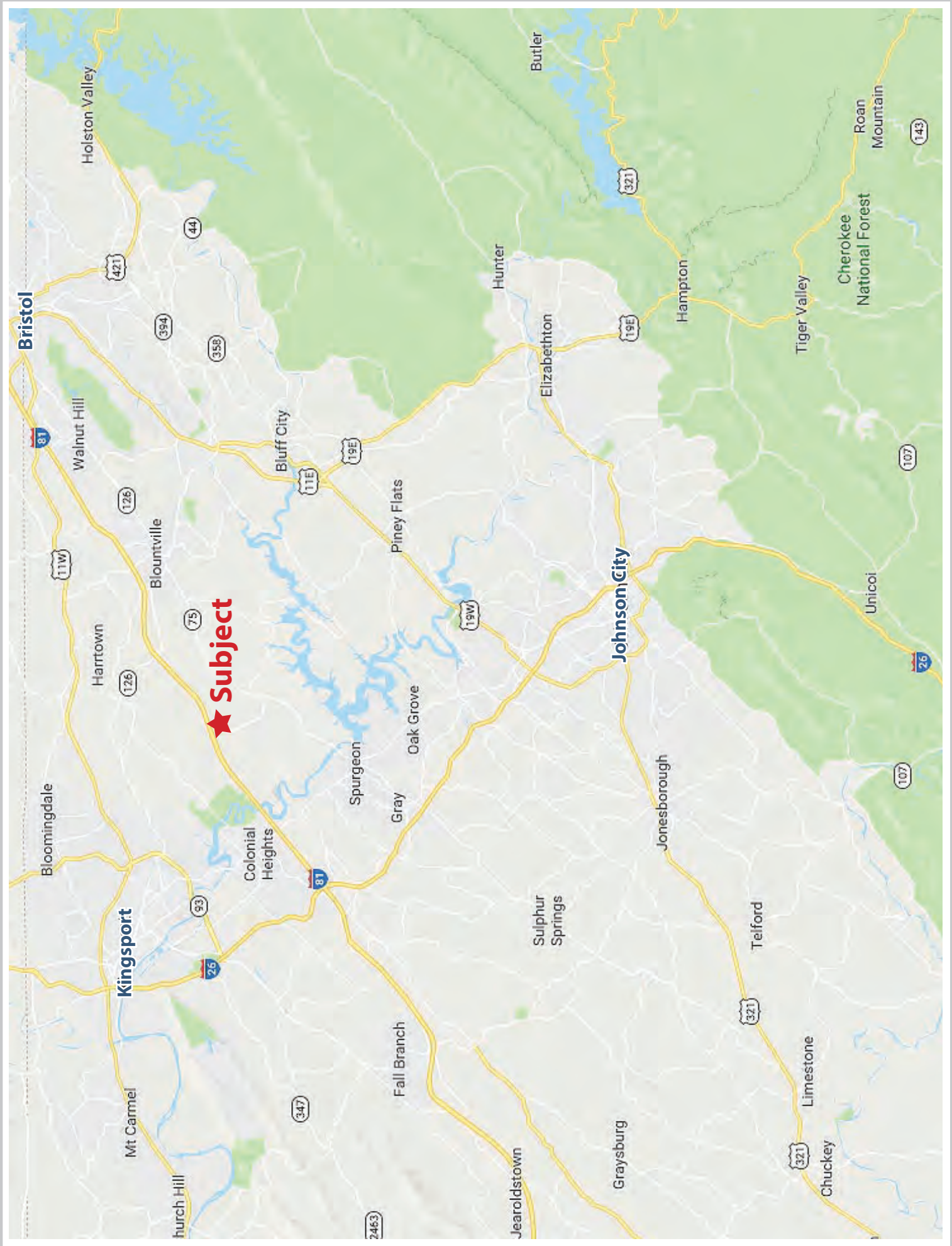
2512

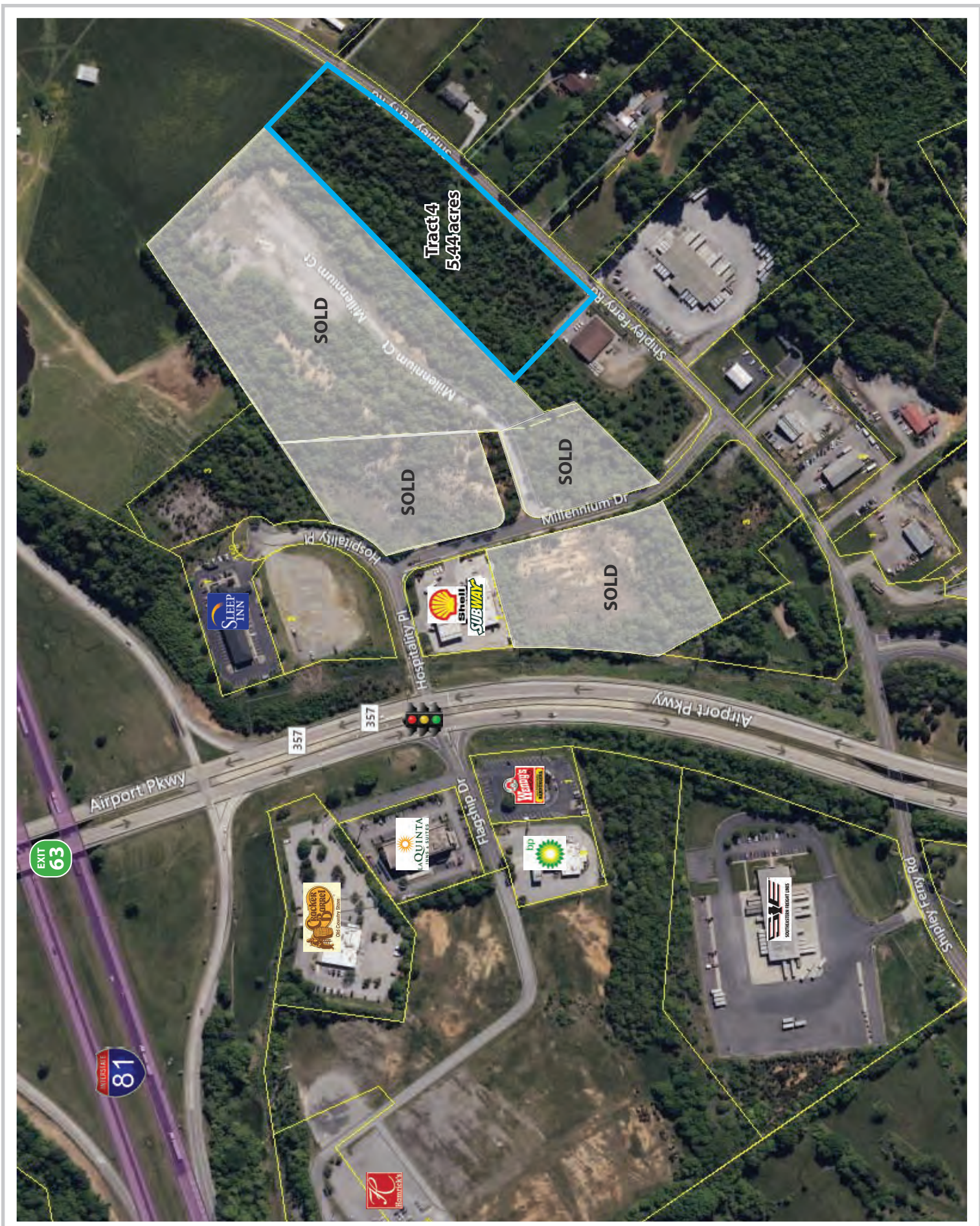
75

Muddy Creek Rd

Muddy Creek Rd

Briest Ferry





MITCH COX
REALTOR, INC.

2304 Silverdale Drive, Suite 200, Johnson City, TN 37601
423-282-6582 (o) 423-282-5903 (f) www.mitchcox.com