

kiln.

**Hello,
welcome
to Kiln.**



What is Kiln?

Kiln is a flexible office space and coworking community meticulously designed to help individuals and teams elevate their performance. By combining years of industry experience and best practices from all over the world, Kiln creates the optimal environment to help companies thrive.



Why Kiln?



“Coming into Kiln, there are ping pong tables, massage chairs, walking desks and bikes, and lots of events going on that I don't have to focus on if I don't want to. I can focus on my business but my employees can still, you know, enjoy all the startup perks that all these big companies are trying to offer them. We can play on the same kind of playing field with them.”

-JON CHENEY, SEEK

Key Features:

- Central location in at The Gateway in Downtown SLC
- Within a quarter mile of the I-15 and I-80 interchange
- Public transportation access and bike storage
- Parking garage access and guest parking validation
- Flexible office space allowing for growth without the growing pains
- Platform for attracting top-tier talent & retaining employees
- Access to onsite amenities including meeting rooms, gym, snacks and drinks
- No hassle, no prep, no upkeep, move-in ready, ready to go, every day

Memberships



Studio Suite

Open floor workspace and dedicated conference rooms for teams of 15 to 100.
Pricing on request



Private Office

Private office for 1 to 15 people. Enclosed, lockable, and ready for move-in.
Starting at \$1,240/month



Resident Desk

Dedicated desk to set up shop. Perfect for an individual or growing team.
\$425/month



Club

Shared desk space for collaborative and agile professionals.
\$250/month

Amenities

- Garage Parking Access
- WiFi
- Month-to-Month Billing
- Printing Services
- Podcast/Recording Studio
- Cleaning Services
- Fully Furnished
- Reception Services

- AV Equipped Conference Rooms
- Fitness Rooms
- Mail Services
- Conference Rooms
- Relaxation Room
- Phone Booths
- Walkable Dining Options
- Wellness Programming

- Treadmill/Bike Desks
- Coffee/Beverage Station
- Onsite Shower
- Parenting Room
- Networking Events
- 24/7 Access
- Fully Stocked Kitchen
- Bike Storage

- Acoustic Technology
- Theater for Events
- Deep Work Rooms
- Curated Breakfast/Snack Offerings
- Video Booths
- Skylights

Our Locations



- **Active Locations**
 - Lehi I, Utah
 - Lehi II, Utah
 - Salt Lake City North, Utah
 - Salt Lake City South, Utah
 - Park City, Utah
 - Boulder, Colorado
 - Meridian, ID
 - Leucadia, CA
 - Carlsbad, CA
 - Solana Beach, CA

- **In Development**
 - Provo, Utah
 - Portland, OR

Once you're a member of one Kiln location, you're a member of all Kiln locations. Today, we operate 10 locations with a focus on lifestyle-centric communities that are growth-minded and attractive to tech talent or entrepreneurs.

With at least 4 more locations opening in 2023 and 15+ location opportunities in the works, we plan on growing to suit enterprise companies throughout the West and beyond, giving us the unique ability to streamline the process of acquiring workspace and meeting sites for your teams on a national level.

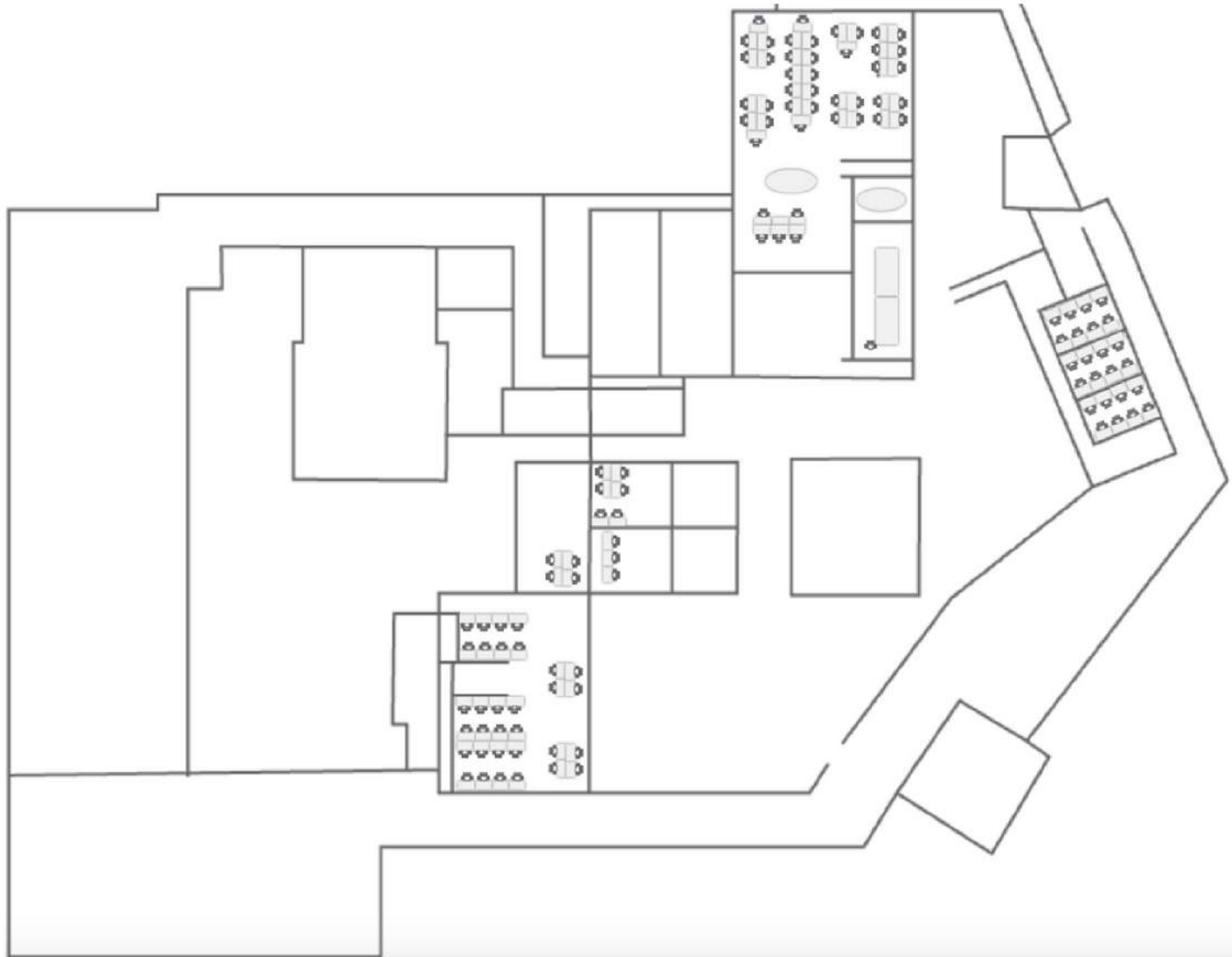


Studio with meeting room and private office

SLC South



SLC South | Mezzanine



SLC North



SLC North



Lookbook



Meeting Room Credits

Every membership or office agreement includes monthly meeting room credits according to membership type or office size.

1-4 person meeting rooms: 1 credit/hour

6-person meeting rooms: 2 credits/hour

Large conference rooms & podcast studio: 4 credits/hour



Coworking Memberships



Club Membership

One club membership to use any of the shared space onsite.
Includes 10 credits per month to book conference rooms.

Month-to-Month Rate: \$250



Resident Desk

One resident desk membership that includes a
dedicated desk and lockable storage. Includes 15
credits per month to book conference rooms.

Month-to-Month Rate: \$425

kiln.

